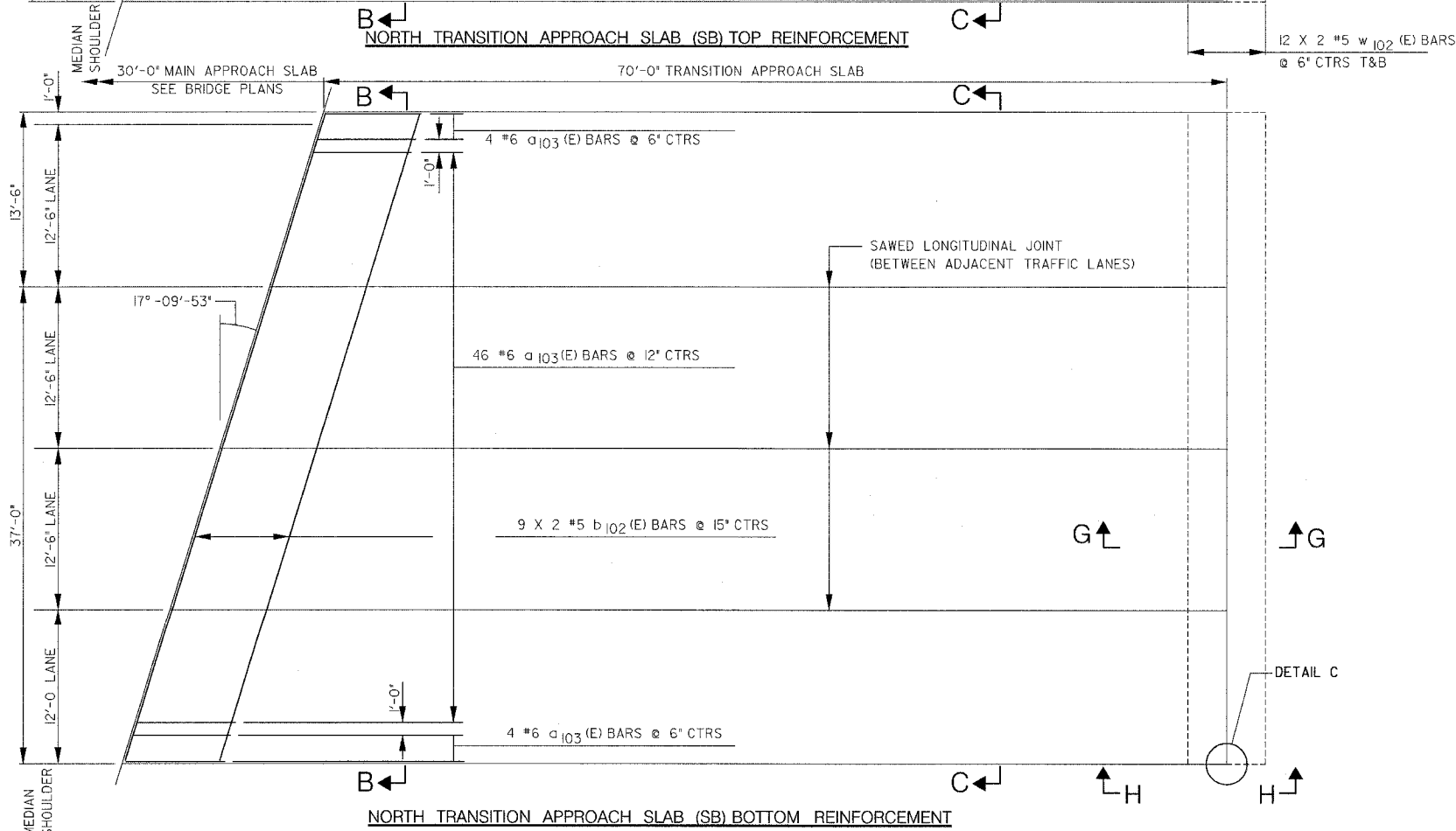
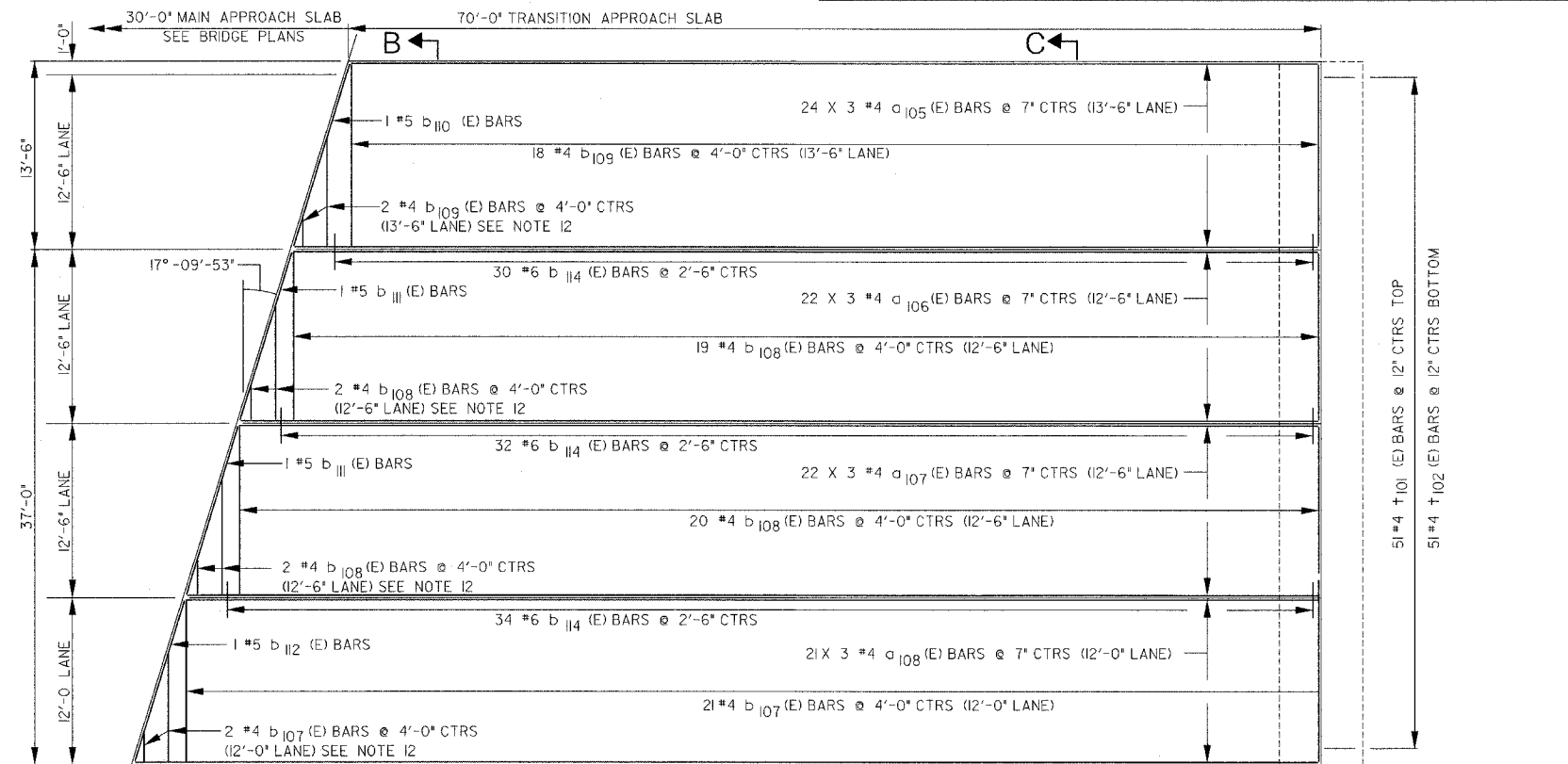


NORTH TRANSITION APPROACH SLAB (SB)

F.A.P. RTE.	SECTION	COUNTY	TOTAL SHEETS	SHEET NO.
303	129K	WINNEBAGO	585	229
STA.		TO STA.		
FED. ROAD DIST. NO.		ILLINOIS	FED. AID PROJECT	



REINFORCING BAR SCHEDULE (FOR NORTHBOUND APPROACH SLAB)

BAR	NO.	SIZE	LENGTH	SHAPE
a ₁₀₃ (E)	54	#6	10'-8"	┌
a ₁₀₅ (E)	72	#4	25'-6"	—
a ₁₀₆ (E)	66	#4	26'-9"	—
a ₁₀₇ (E)	66	#4	28'-1"	—
a ₁₀₈ (E)	63	#4	29'-4"	—
b ₁₀₂ (E)	18	#5	27'-1"	—
b ₁₀₇ (E)	22	#4	11'-8"	—
b ₁₀₈ (E)	41	#4	12'-2"	—
b ₁₀₉ (E)	19	#4	13'-2"	—
b ₁₁₀ (E)	1	#5	13'-9"	—
b ₁₁₁ (E)	2	#5	12'-8"	—
b ₁₁₂ (E)	1	#5	12'-2"	—
b ₁₁₄ (E)	96	#6	2'-6"	—
+ ₁₀₁ (E)	51	#4	5'-8"	—
+ ₁₀₂ (E)	51	#4	6'-8"	┌
w ₁₀₂ (E)	48	#5	25'-11"	—
Reinforcement Bars, Epoxy Coated		Pound	7,817	

BILL OF MATERIAL

PAY ITEM NUMBER	DESCRIPTION	UNIT	QUANTITY
42001400	Bridge Approach Pavement (Special)	Sq. Yds.	437

REVISIONS	
NAME	DATE

ILLINOIS DEPARTMENT OF TRANSPORTATION
 NORTH TRANSITION APPROACH SLAB (SB)
 N.W. TOLLWAY
 OVER IL 173 (F.A.P. ROUTE 303)
 SECTION 129K
 WINNEBAGO COUNTY
 S.N. 101-9963 (SB) & 101-9964 (NB)
 TOLLWAY S.N. 703 (NB) & 704 (SB)

SCALE: VERT. N/A
 HORIZ. N/A
 DATE: SEPTEMBER 14, 2005

DRAWN BY: BSL
 CHECKED BY: JTT