

# NORTH TRANSITION APPROACH SLAB (NB)

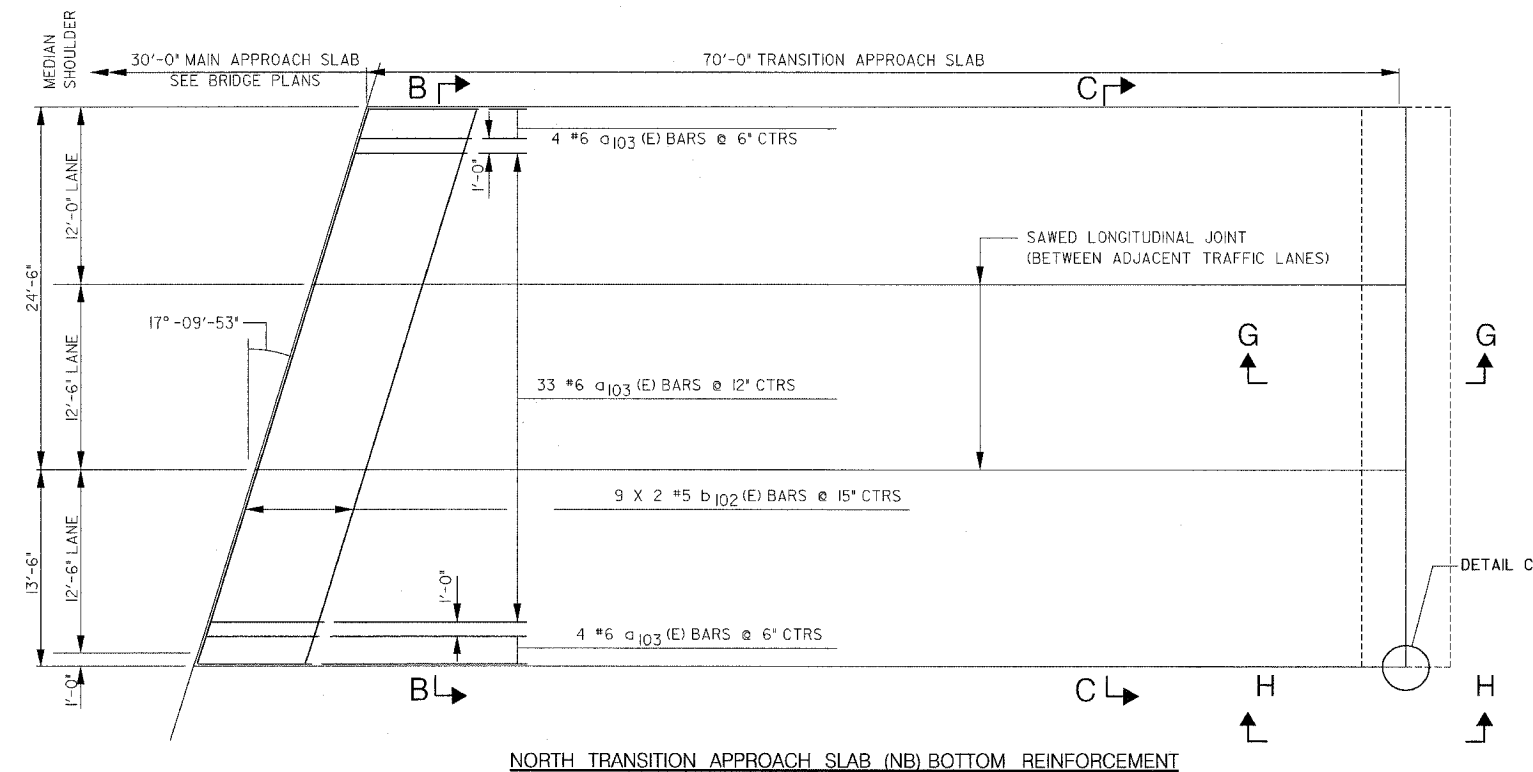
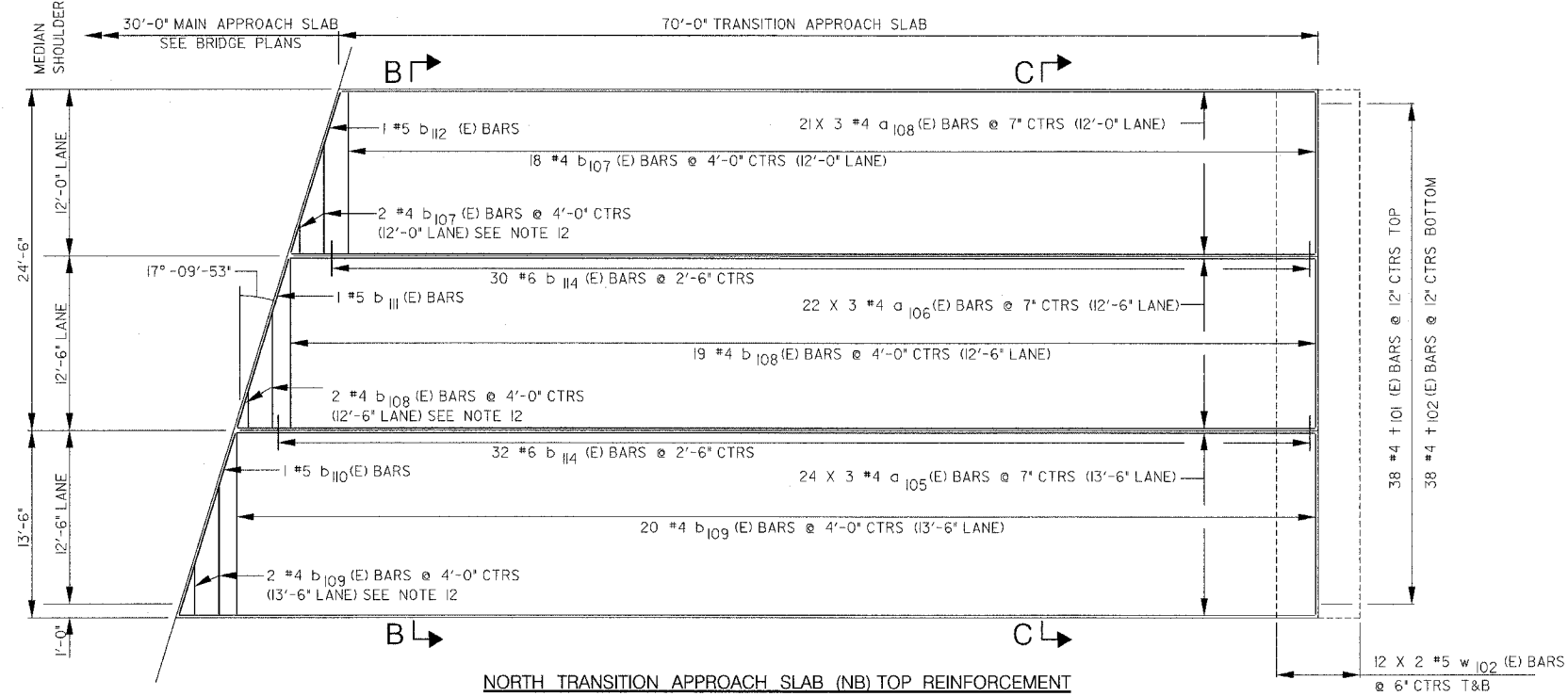
F.A.P. RTE.	SECTION	COUNTY	TOTAL SHEETS	SHEET NO.
303	129K	WINNEBAGO	585	230
STA.		TO STA.		
FED. ROAD DIST. NO.		ILLINOIS	FED. AID PROJECT	

## REINFORCING BAR SCHEDULE (FOR NORTHBOUND APPROACH SLAB)

BAR	NO.	SIZE	LENGTH	SHAPE
a <sub>103</sub> (E)	41	#6	10'-8"	⌋
a <sub>105</sub> (E)	72	#4	28'-0"	—
a <sub>106</sub> (E)	66	#4	26'-8"	—
a <sub>108</sub> (E)	63	#4	25'-4"	—
b <sub>102</sub> (E)	18	#5	20'-7"	—
b <sub>107</sub> (E)	19	#4	11'-8"	—
b <sub>108</sub> (E)	20	#4	12'-2"	—
b <sub>109</sub> (E)	21	#4	13'-2"	—
b <sub>110</sub> (E)	1	#5	13'-9"	—
b <sub>111</sub> (E)	1	#5	12'-8"	—
b <sub>112</sub> (E)	1	#5	12'-2"	—
b <sub>114</sub> (E)	62	#6	2'-6"	—
t <sub>101</sub> (E)	38	#4	5'-8"	⌋
t <sub>102</sub> (E)	38	#4	6'-8"	⌋
w <sub>102</sub> (E)	48	#5	19'-8"	—
Reinforcement Bars, Epoxy Coated			Pound	6,698

## BILL OF MATERIAL

PAY ITEM NUMBER	DESCRIPTION	UNIT	QUANTITY
42001400	Bridge Approach Pavement (Special)	Sq. Yds.	320



REVISIONS	
NAME	DATE

ILLINOIS DEPARTMENT OF TRANSPORTATION  
**NORTH TRANSITION APPROACH SLAB (NB)**  
 N.W. TOLLWAY  
 OVER IL 173 (F.A.P. ROUTE 303)  
 SECTION 129K  
 WINNEBAGO COUNTY  
 S.N. 101-9963 (SB) & 101-9964 (NB)  
 TOLLWAY S.N. 703 (NB) & 704 (SB)

SCALE: VERT. N/A      DRAWN BY: BSL  
 HORIZ. N/A              CHECKED BY: JTT  
 DATE: SEPTEMBER 14, 2005