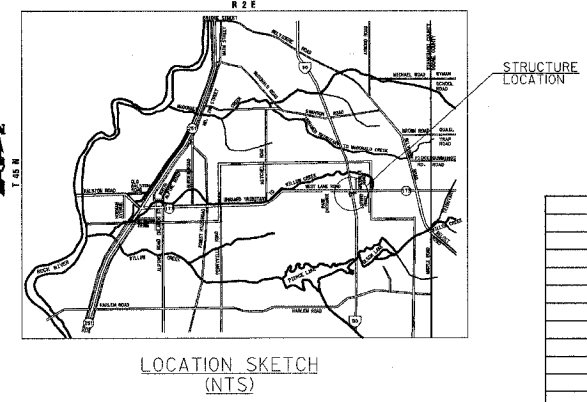
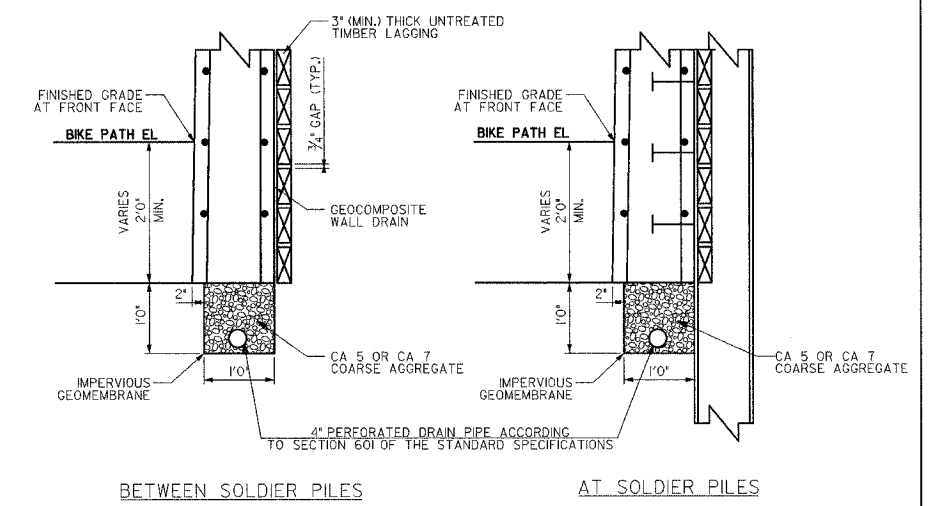
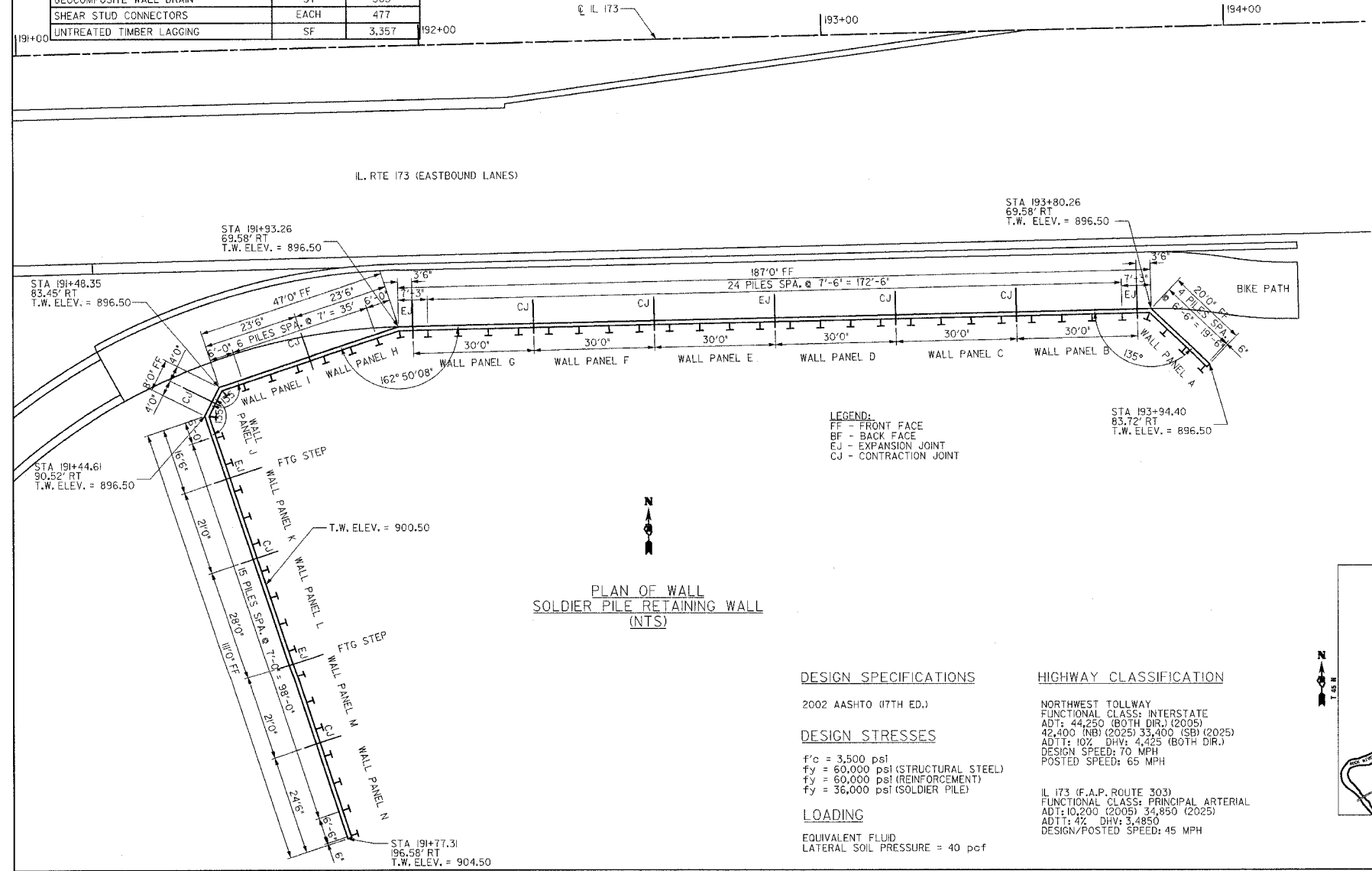
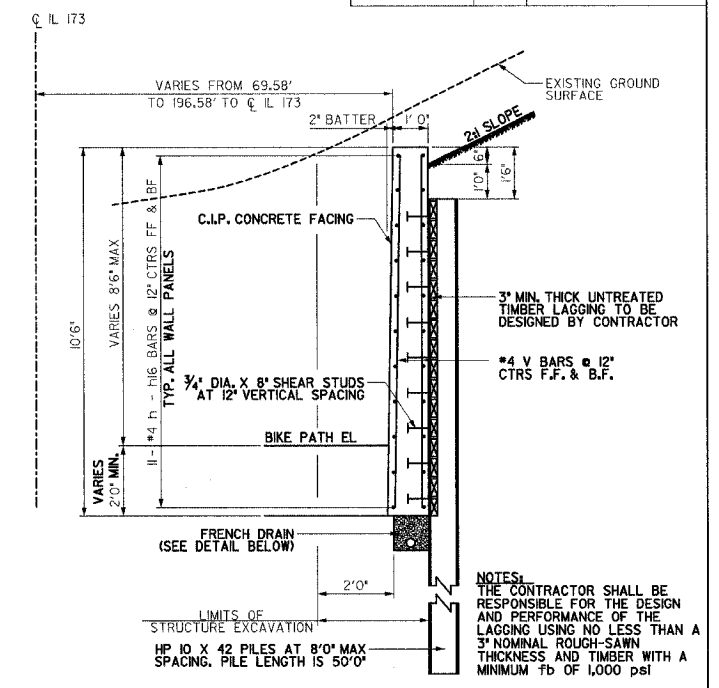
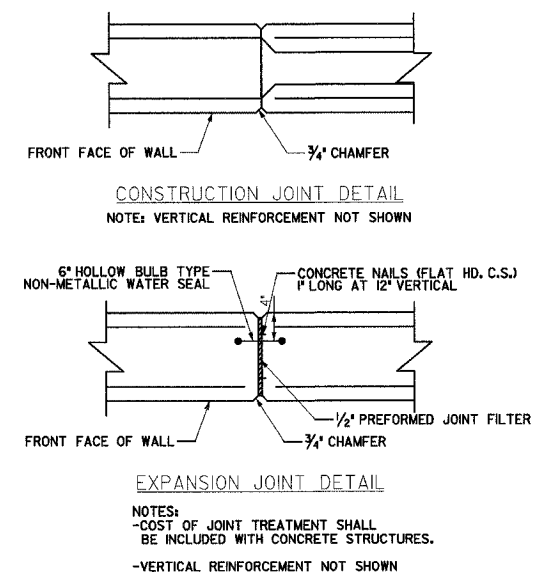
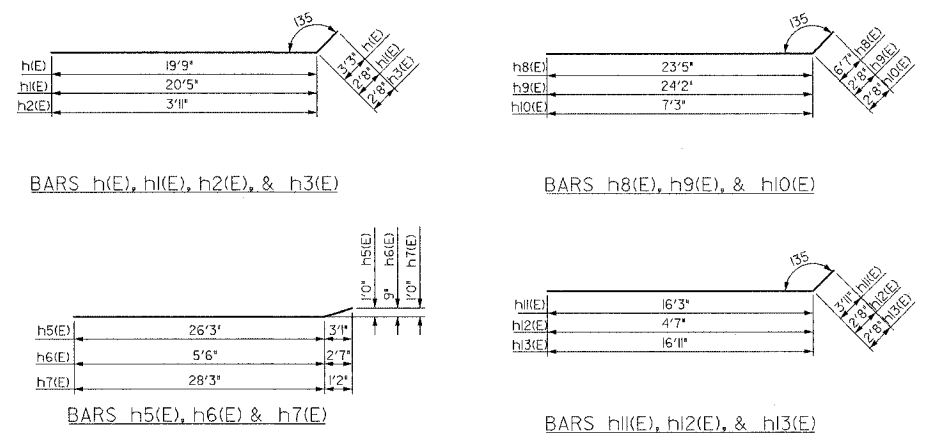


F.A.P. RTE.	SECTION	COUNTY	TOTAL SHEETS	SHEET NO.
303	I29K	WINNEBAGO	585	261
STA.		TO STA.		
FED. ROAD DIST. NO.		ILLINOIS	FED. AID PROJECT	

BAR	NO.	SIZE	LENGTH	SHAPE
h1(E)	11	#4	23'0"	—
h1(E)	11	#4	23'1"	—
h2(E)	11	#4	6'7"	—
h3(E)	88	#4	32'8"	—
h4(E)	44	#4	29'10"	—
h5(E)	11	#4	29'6"	—
h6(E)	11	#4	8'2"	—
h7(E)	11	#4	29'3"	—
h8(E)	11	#4	30'0"	—
h9(E)	11	#4	26'10"	—
h10(E)	11	#4	9'1"	—
h11(E)	11	#4	20'2"	—
h12(E)	11	#4	7'3"	—
h13(E)	11	#4	19'7"	—
h14(E)	44	#4	23'8"	—
h15(E)	22	#4	27'10"	—
h16(E)	22	#4	24'4"	—
v1(E)	520	#4	10'2"	—
POROUS GRANULAR EMBANKMENT		CY	14	
STRUCTURE EXCAVATION		CY	435	
CONCRETE STRUCTURES		CY	157	
REINFORCEMENT BARS, EPOXY COATED		LB	9,505	
METAL SHOES		EACH	53	
PIPE UNDERDRAINS, 4"		LF	380	
FURNISHING STEEL PILES		LF	2,650	
DRIVING STEEL PILES (HP 10 X 42)		LF	2,650	
GEOCOMPOSITE WALL DRAIN		SY	363	
SHEAR STUD CONNECTORS		EACH	477	
UNTREATED TIMBER LAGGING		SF	3,357	



**DESIGN SPECIFICATIONS**  
2002 AASHTO (7TH ED.)

**DESIGN STRESSES**  
f'c = 3,500 psi  
fy = 60,000 psi (STRUCTURAL STEEL)  
fy = 60,000 psi (REINFORCEMENT)  
fy = 36,000 psi (SOLDIER PILE)

**LOADING**  
EQUIVALENT FLUID  
LATERAL SOIL PRESSURE = 40 psf

**HIGHWAY CLASSIFICATION**  
NORTHWEST TOLLWAY  
FUNCTIONAL CLASS: INTERSTATE  
ADT: 44,250 (BOTH DIR.) (2005)  
42,400 (NB) (2025) 33,400 (SB) (2025)  
ADT: 102,000 (BOTH DIR.) (2025)  
DESIGN SPEED: 70 MPH  
POSTED SPEED: 65 MPH

IL 173 (F.A.P. ROUTE 303)  
FUNCTIONAL CLASS: PRINCIPAL ARTERIAL  
ADT: 10,200 (2005) 34,850 (2025)  
ADT: 47,000 (BOTH DIR.) (2025)  
DESIGN/POSTED SPEED: 45 MPH

REVISIONS	
NAME	DATE

ILLINOIS DEPARTMENT OF TRANSPORTATION

**RETAINING WALL PLAN AND DETAILS**

SCALE: VERT. N/A  
HORIZ. N/A  
DATE: SEPTEMBER 15, 2005

DRAWN BY TWH  
CHECKED BY JTT