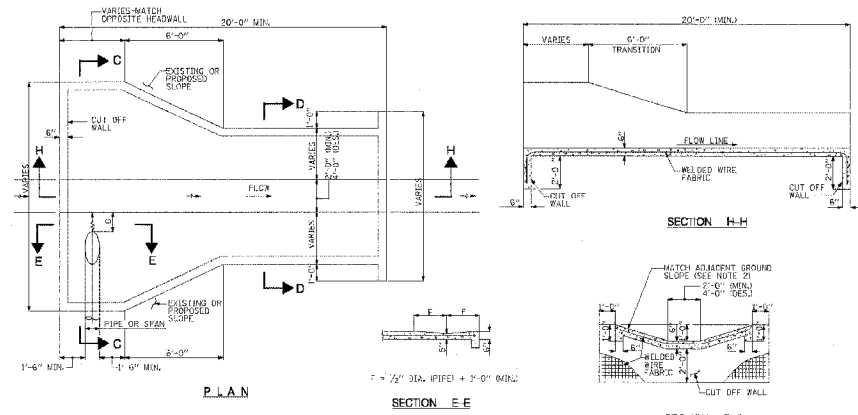
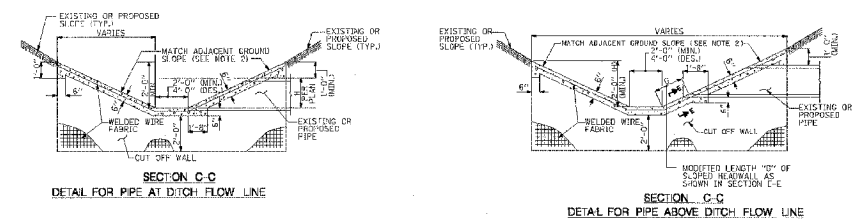


F.A.P. RTE.	SECTION	COUNTY	TOTAL SHEETS	SHEET NO.
303	I29K	WINNEBAGO	585	270
STA.		TO STA.		
FED. ROAD DIST. NO.		ILLINOIS FED. AID PROJECT		



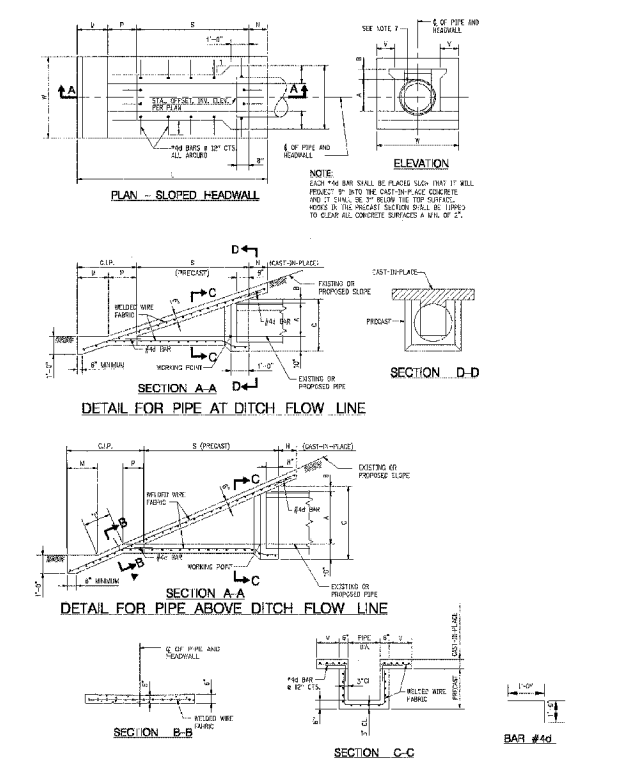
- NOTES**
- CLASS SP CONCRETE SHALL BE USED THROUGHOUT.
 - THE SLOPED HEADWALL TYPE IV SHALL BE CONSTRUCTED FLUSH WITH EXISTING OR PROPOSED SLOPE.
 - THE SLOPED HEADWALL DETAILS SHOWN IN THIS DRAWING ARE FOR USE ONLY WITH PIPES HAVING DIAMETERS OF 30\"/>



QUANTITIES FOR SLOPED HEADWALLS TYPE IV
(SEE NOTE #1)

SLOPE	CONCRETE HEADWALLS AND COLLARS CLASS SP	CONCRETE HEADWALLS AND COLLARS CLASS SP	WELDED WIRE FABRIC PER 100 SQ. FT.	WELDED WIRE FABRIC PER 100 SQ. FT.
5:1	5.41	6.43	239	298
3:1	6.80	8.24	262	330
2:1	8.68	10.30	297	373
1.5:1	11.41	13.51	351	440
1:1	15.11	18.16	457	579
0.5:1	23.62	28.82	691	879

APPROVED: [Signature] DATE: 9-22-2004
 CTE ENGINEERS
 THE ILLINOIS STATE TOLL HIGHWAY AUTHORITY
 2700 BODEN AVENUE
 DOWNERS GROVE, ILLINOIS 60411
 STANDARD SD 04-24A
 SLOPED HEADWALLS TYPE IV DETAILS
 DRAWING NO. 629

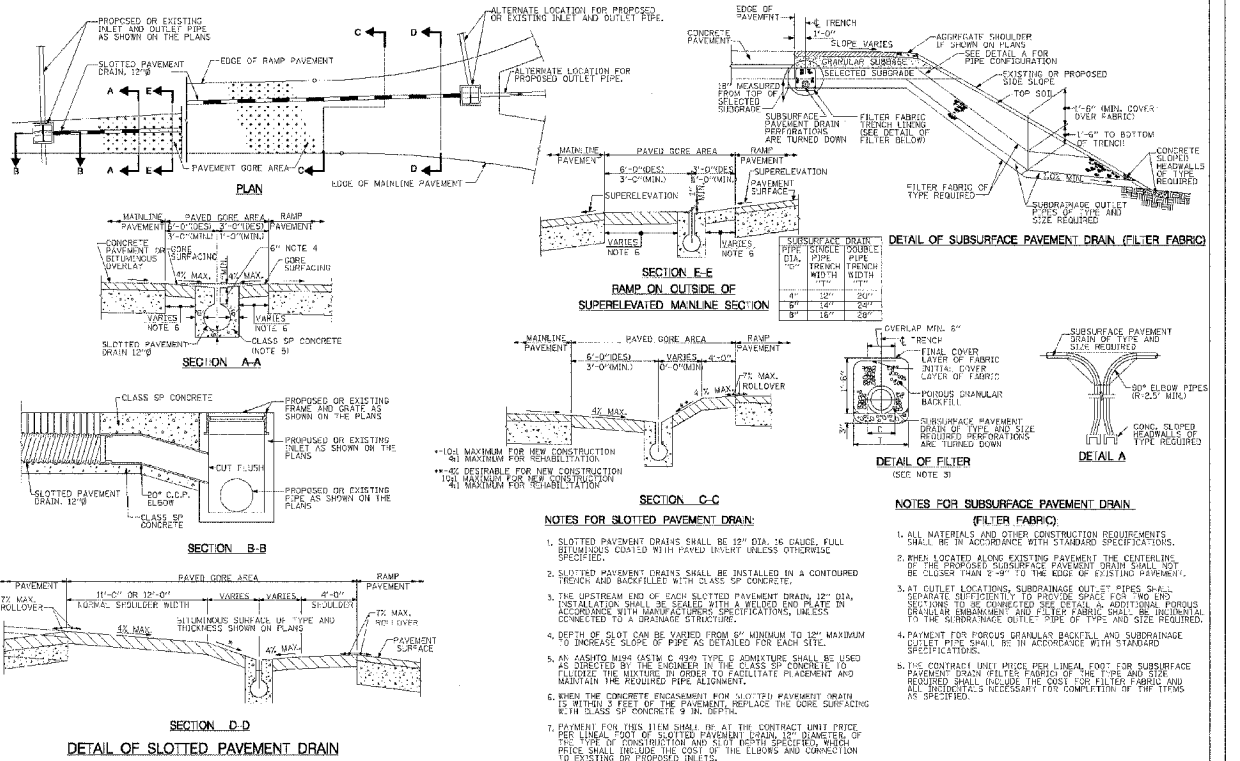


DIMENSIONS AND QUANTITIES IN ONE SLOPED HEADWALL TYPE III

PIPE DIA.	DIMENSIONS										PRE. CAST CONCRETE PER 100 SQ. FT.	WELDED WIRE FABRIC PER 100 SQ. FT.	NO. OF REIN. BARS PER 100 SQ. FT.
	A	B	C	D	E	F	G	H	I	J			
6"	7"	18"	1'-0"	1'-0"	1'-0"	1'-0"	1'-0"	1'-0"	1'-0"	1'-0"	2.15	28	12
8"	9"	24"	1'-0"	1'-0"	1'-0"	1'-0"	1'-0"	1'-0"	1'-0"	1'-0"	2.35	32	14
10"	11"	30"	1'-0"	1'-0"	1'-0"	1'-0"	1'-0"	1'-0"	1'-0"	1'-0"	2.55	36	16
12"	13"	36"	1'-0"	1'-0"	1'-0"	1'-0"	1'-0"	1'-0"	1'-0"	1'-0"	2.75	40	18
14"	15"	42"	1'-0"	1'-0"	1'-0"	1'-0"	1'-0"	1'-0"	1'-0"	1'-0"	2.95	44	20
16"	17"	48"	1'-0"	1'-0"	1'-0"	1'-0"	1'-0"	1'-0"	1'-0"	1'-0"	3.15	48	22
18"	19"	54"	1'-0"	1'-0"	1'-0"	1'-0"	1'-0"	1'-0"	1'-0"	1'-0"	3.35	52	24
20"	21"	60"	1'-0"	1'-0"	1'-0"	1'-0"	1'-0"	1'-0"	1'-0"	1'-0"	3.55	56	26
22"	23"	66"	1'-0"	1'-0"	1'-0"	1'-0"	1'-0"	1'-0"	1'-0"	1'-0"	3.75	60	28
24"	25"	72"	1'-0"	1'-0"	1'-0"	1'-0"	1'-0"	1'-0"	1'-0"	1'-0"	3.95	64	30
26"	27"	78"	1'-0"	1'-0"	1'-0"	1'-0"	1'-0"	1'-0"	1'-0"	1'-0"	4.15	68	32
28"	29"	84"	1'-0"	1'-0"	1'-0"	1'-0"	1'-0"	1'-0"	1'-0"	1'-0"	4.35	72	34
30"	31"	90"	1'-0"	1'-0"	1'-0"	1'-0"	1'-0"	1'-0"	1'-0"	1'-0"	4.55	76	36

- NOTES**
- CLASS SP CONCRETE SHALL BE USED THROUGHOUT.
 - THE SLOPED HEADWALL SHALL BE CONSTRUCTED FLUSH WITH EXISTING OR PROPOSED SLOPE.
 - THE SLOPED HEADWALL DETAILS SHOWN IN THIS DRAWING ARE FOR USE ONLY WITH PIPES HAVING DIAMETERS OF 30\"/>

APPROVED: [Signature] DATE: 9-22-2004
 CTE ENGINEERS
 THE ILLINOIS STATE TOLL HIGHWAY AUTHORITY
 2700 BODEN AVENUE
 DOWNERS GROVE, ILLINOIS 60411
 STANDARD SD 04-24B
 SLOPED HEADWALLS TYPE III DETAILS
 DRAWING NO. 629



APPROVED: [Signature] DATE: 9-22-2004
 CTE ENGINEERS
 THE ILLINOIS STATE TOLL HIGHWAY AUTHORITY
 2700 BODEN AVENUE
 DOWNERS GROVE, ILLINOIS 60411
 STANDARD SD 04-25
 SUBSURFACE PAVEMENT DRAIN FILTER FABRIC AND SLOTTED PAVEMENT DRAIN
 DRAWING NO. 629

- NOTES FOR SLOTTED PAVEMENT DRAIN:**
- SLOTTED PAVEMENT DRAINS SHALL BE 12\"/>
- NOTES FOR SUBSURFACE PAVEMENT DRAIN (FILTER FABRIC):**
- ALL MATERIALS AND OTHER CONSTRUCTION REQUIREMENTS SHALL BE IN ACCORDANCE WITH STANDARD SPECIFICATIONS.
 - WHEN LOCATED ALONG EXISTING PAVEMENT THE CENTERLINE OF THE SUBSURFACE PAVEMENT DRAIN SHALL NOT BE CLOSER THAN 2'-0\"/>

REVISIONS	
NAME	DATE

ILLINOIS DEPARTMENT OF TRANSPORTATION
ISTHA STANDARDS
 SCALE: VERT. N/A
 HORIZ. N/A
 DATE: SEPTEMBER 14, 2005
 DRAWN BY: KRL
 CHECKED BY: PDS