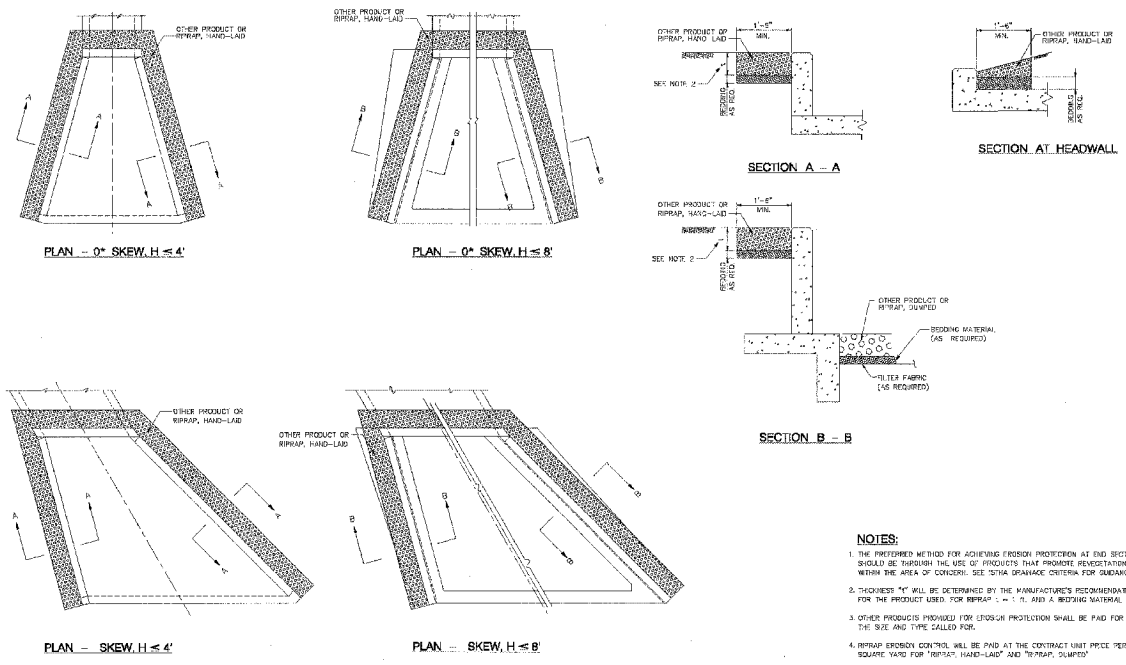


| | | | | |
|---------------------|---------|---------------------------|--------------|-----------|
| F.A.P. RTE. | SECTION | COUNTY | TOTAL SHEETS | SHEET NO. |
| 303 | I29K | WINNEBAGO | 585 | 271 |
| STA. | | TO STA. | | |
| FED. ROAD DIST. NO. | | ILLINOIS FED. AID PROJECT | | |



NOTES:

- THE PREFERRED METHOD FOR ACHIEVING FRICTION PROTECTION AT END SECTIONS SHOULD BE THROUGH THE USE OF PRODUCTS THAT PROMOTE PENETRATION WITHIN THE AREA OF CONCRETE. SEE SOME DRAINAGE CRITERIA FOR GUIDANCE.
- THICKNESS "T" WILL BE DETERMINED BY THE MANUFACTURER'S RECOMMENDATION FOR THE PRODUCT USED FOR REPAIR. T = 1/4" AND A REPAIR MATERIAL = 1/4".
- OTHER PRODUCTS PROVIDED FOR FRICTION PROTECTION SHALL BE PAID FOR AT THE SITE AND TYPE CALLED FOR.
- REPAIR FRICTION CONTROL WILL BE PAID AT THE CONTRACT UNIT PRICE PER SQUARE YARD FOR "OTHER PRODUCT OR REPAIR, HAND-APPLIED".

FOR USE WITH STANDARDS SD 04-248 AND SD 04-249

APPROVED: *[Signature]* DATE: 6-22-2004

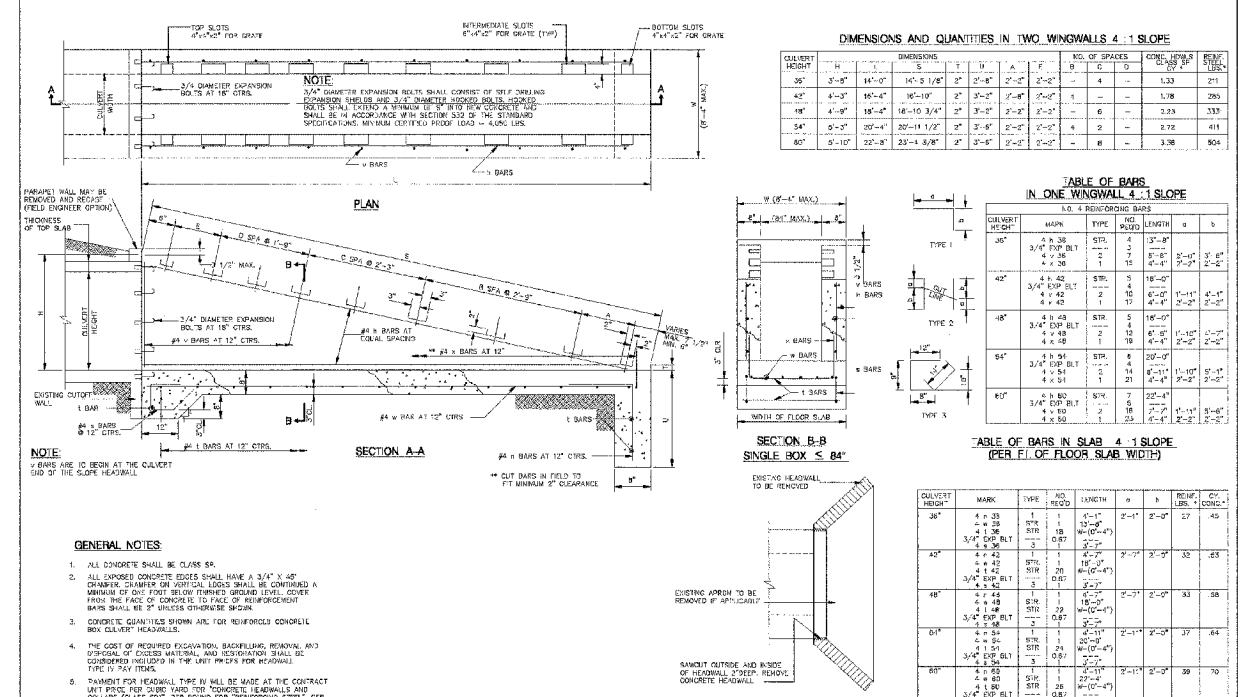
CTE ENGINEERS
CONCRETE TOWNSHIP ENGINEERS, INC.

THE ILLINOIS STATE TOLL HIGHWAY AUTHORITY
8700 DODD AVENUE
DOWNERS GROVE, ILLINOIS 60515

| NO. | DATE | REVISION | DESCRIPTION |
|-----|------|----------|-------------|
| | | | |

STANDARD SD 04-248
EROSION PROTECTION

DRAWING NO. 844
OF 01



APPROVED: *[Signature]* DATE: 6-22-2004

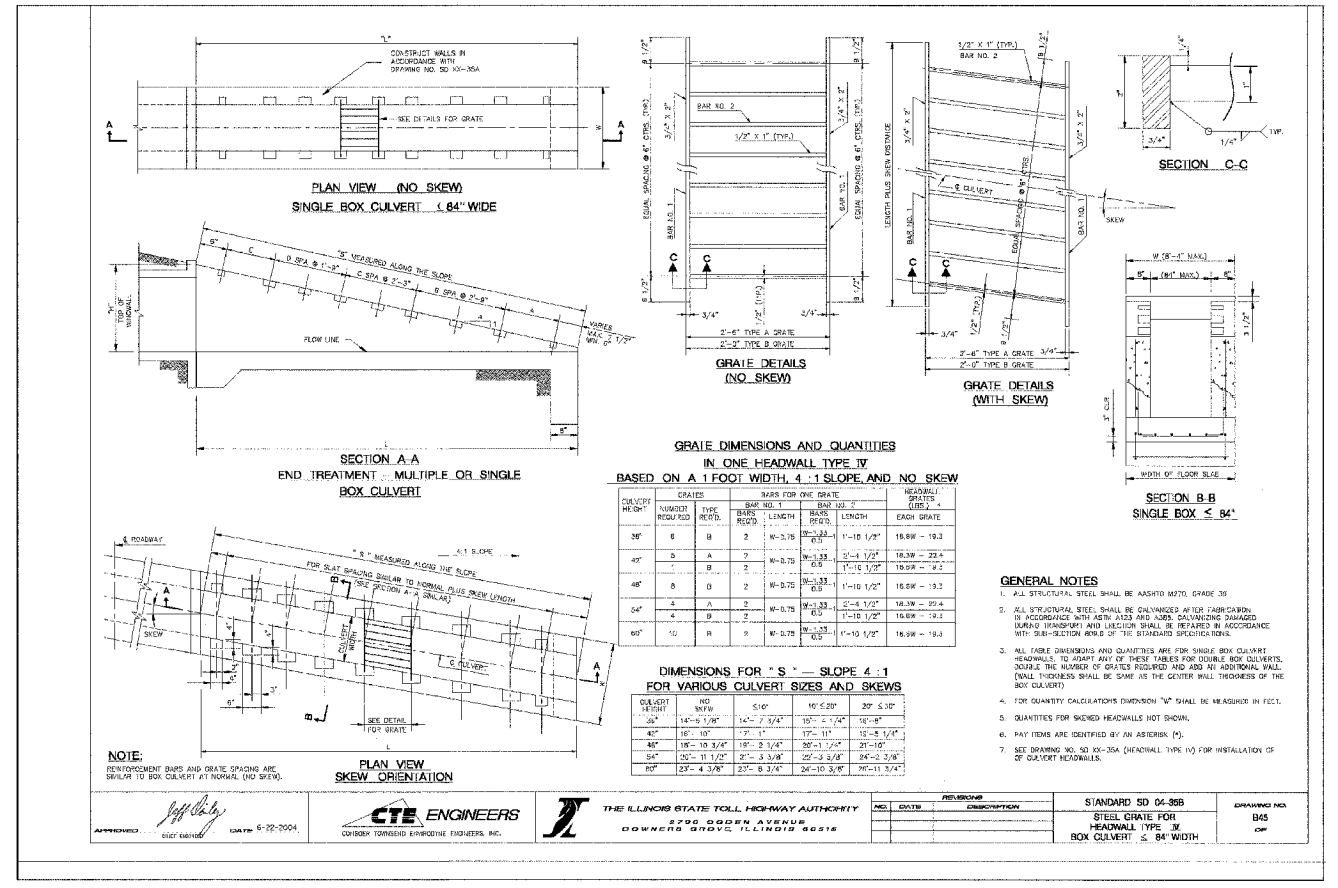
CTE ENGINEERS
CONCRETE TOWNSHIP ENGINEERS, INC.

THE ILLINOIS STATE TOLL HIGHWAY AUTHORITY
8700 DODD AVENUE
DOWNERS GROVE, ILLINOIS 60515

| NO. | DATE | REVISION | DESCRIPTION |
|-----|------|----------|-------------|
| | | | |

STANDARD SD 04-248
HEADWALL TYPE III
BOX CULVERT, ≤ 84" WIDTH

DRAWING NO. 844
OF 01



APPROVED: *[Signature]* DATE: 6-22-2004

CTE ENGINEERS
CONCRETE TOWNSHIP ENGINEERS, INC.

THE ILLINOIS STATE TOLL HIGHWAY AUTHORITY
8700 DODD AVENUE
DOWNERS GROVE, ILLINOIS 60515

| NO. | DATE | REVISION | DESCRIPTION |
|-----|------|----------|-------------|
| | | | |

STANDARD SD 04-248
STEEL GRADE FOR HEADWALL TYPE III BOX CULVERT, ≤ 84" WIDTH

DRAWING NO. 844
OF 01

| REVISIONS | | ILLINOIS DEPARTMENT OF TRANSPORTATION |
|-----------|------|--|
| NAME | DATE | |
| | | ISTHA STANDARDS SCALE: VERT. N/A HORIZ. N/A DATE: SEPTEMBER 14, 2005 DRAWN BY: KRL CHECKED BY: PDS |
| | | |
| | | |
| | | |
| | | |
| | | |
| | | |
| | | |
| | | |
| | | |