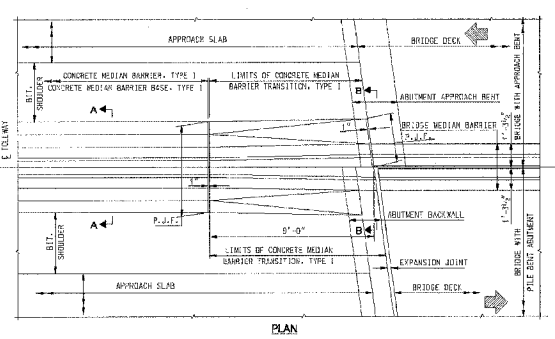
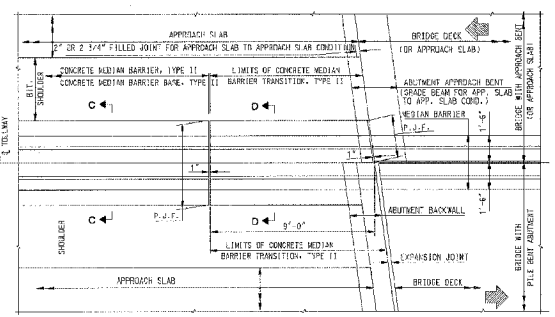


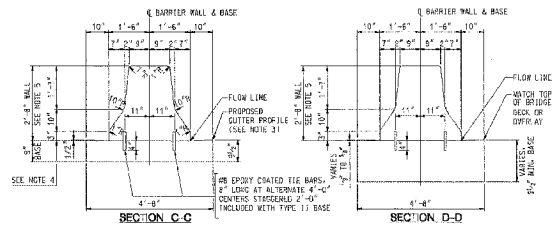
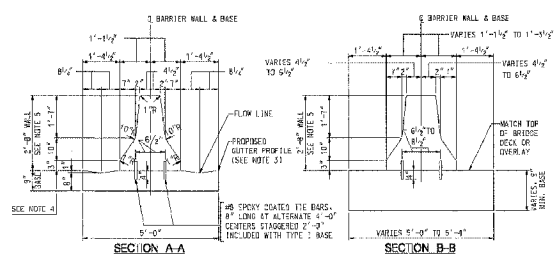
F.A.P. RTE.	SECTION	COUNTY	TOTAL SHEETS	SHEET NO.
303	I29K	WINNEBAGO	585	274
STA.		TO STA.		
FED. ROAD DIST. NO.	ILLINOIS	FED. AID PROJECT		



PLAN  
CONCRETE MEDIAN BARRIER TRANSITION, TYPE I



PLAN  
CONCRETE MEDIAN BARRIER TRANSITION, TYPE II



- NOTES
1. THE MATERIAL AND CONSTRUCTION REQUIREMENTS FOR CONCRETE MEDIAN BARRIER AND BARRIER BASE SHALL APPLY TO CONCRETE MEDIAN BARRIER TRANSITION TYPES I AND II.
  2. PAYMENT FOR THE WORK SHOWN WILL BE MADE AT THE CONTRACT UNIT PRICE PER EACH FROM "CONCRETE MEDIAN BARRIER TRANSITION, TYPE I," AND "CONCRETE MEDIAN BARRIER TRANSITION, TYPE II."
  3. CUTTER PROFILE IN THE VICINITY OF SAC VERTICAL CURVES, ALONG FLAT GRADES AND AT THE MEETING OF PROPOSED AND EXISTING GUTTER, SHALL BE CAREFULLY CONTROLLED AND FIELD ADJUSTED IF NECESSARY TO ENSURE POSITIVE DRAINAGE AND AVOID PONDING.
  4. VARIES IN AREAS OF GRADES LESS THAN 0.2% FROM 2" TO 3/4".
  5. VARIES IN AREAS OF GRADES LESS THAN 0.2% FROM 2" TO 3/4".
  6. MINIMUM DIMENSIONS AND SHOW ACTUAL DIMENSIONS SHALL BE AS REQUIRED TO MATCH BRIDGE BARRIER SHOWN ON BRIDGE PLANS.
  7. P.J.F. DENOTES PREFORMED JOINT FILLER. 1" P.J.F. SHALL BE INSTALLED FULL HEIGHT AS SHOWN BETWEEN FACES OF CONCRETE. FOR ELEVATION VIEWS OF TRANSITIONS, SEE SD 04-198 (TABLE 2) OF 25.
  8. PORTLAND CEMENT CONCRETE SHALL BE CLASS SP CONCRETE WITH SUPERSTRUCTURE AGGREGATE FOR THE BARRIER WALL AND CLASS SCORON, AND CLASS SP CONCRETE FOR THE BARRIER BASE, AS SPECIFIED IN THE STANDARD SPECIFICATIONS.
  9. 1" DEEP CONTRACTION JOINTS SHALL BE CONSTRUCTED IN THE BARRIER WALL ONLY NOT IN THE BARRIER BASES. THE LOCATION OF THE CONTRACTION JOINT SHALL MATCH CRACKS THAT HAVE ALREADY DEVELOPED IN THE BASE. CONTRACTION JOINTS SHALL ALSO BE CONSTRUCTED AT BOTH SIDES OF ALL SPAN/PIERS STRUCTURES. MAXIMUM JOINT SPACING SHALL BE 20'.
  10. THE FORMING OF CONTRACTION JOINTS SHALL BE DONE WITH AN APPROVED FINISHING TOOL AT THE DISCRETION OF THE ENGINEER SUBJECT TO THE SATISFACTORY CONTROL OF CRACKING. THE SANDING OF CONTRACTION JOINTS IN THE BARRIER WALL SHALL NOT BE PERMITTED.
  11. REINFORCING BARS MEETING THE REQUIREMENTS OF AASHTO MANUAL ANS1, GRADE 60, WILL BE USED AS THE BARS BETWEEN THE MEDIAN BARRIER BASE AND THE MEDIAN BARRIER WALL.

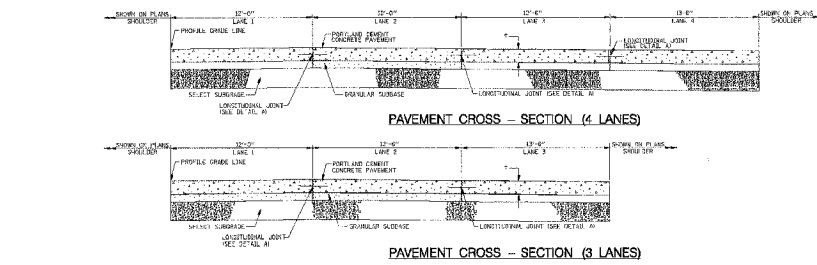
SHEET 1 OF 2

APPROVED: [Signature] DATE: 5-28-2004

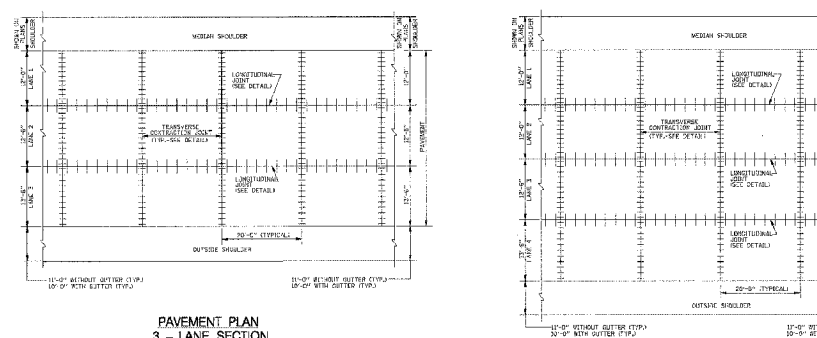
CTE ENGINEERS  
CONSEIL TORONTO ENGINEERS, P.L.C.

THE ILLINOIS STATE TOLL HIGHWAY AUTHORITY  
2700 OGDEN AVENUE  
DOWNERS GROVE, ILLINOIS 60515

NO.	DATE	REVISION	DESCRIPTION	STANDARD SD 04-198	DRAWING NO.
				CONCRETE MEDIAN BARRIER TRANSITION AT BRIDGE APPROACHES	C11



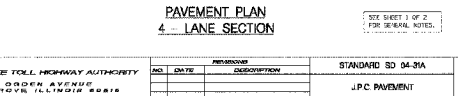
PAVEMENT CROSS - SECTION (4 LANES)



PAVEMENT CROSS - SECTION (3 LANES)



PAVEMENT PLAN  
3 - LANE SECTION



PAVEMENT PLAN  
4 - LANE SECTION

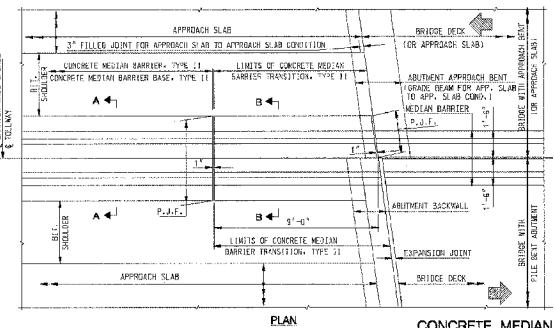
SHEET 2 OF 2

APPROVED: [Signature] DATE: 5-28-2004

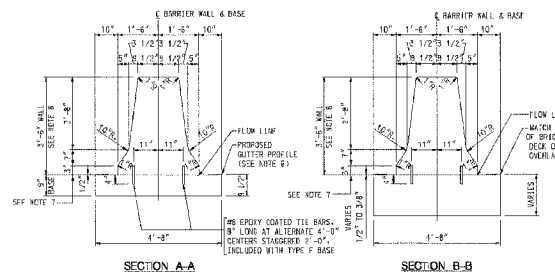
CTE ENGINEERS  
CONSEIL TORONTO ENGINEERS, P.L.C.

THE ILLINOIS STATE TOLL HIGHWAY AUTHORITY  
2700 OGDEN AVENUE  
DOWNERS GROVE, ILLINOIS 60515

NO.	DATE	REVISION	DESCRIPTION	STANDARD SD 04-31A	DRAWING NO.
				J.P.C. PAVEMENT	A7



PLAN  
CONCRETE MEDIAN BARRIER TRANSITION, TYPE F



SECTION A-A SECTION B-B

- NOTES
1. PORTLAND CEMENT CONCRETE SHALL BE CLASS OF CONCRETE WITH SUPERSTRUCTURE AGGREGATE FOR THE BARRIER WALL, CLASS SCORON AND CLASS SP CONCRETE FOR THE BARRIER BASE, AS SPECIFIED IN THE STANDARD SPECIFICATIONS.
  2. 1" DEEP CONTRACTION JOINTS SHALL BE CONSTRUCTED IN THE BARRIER WALL ONLY NOT IN THE BARRIER BASES. THE LOCATION OF THE CONTRACTION JOINT SHALL MATCH CRACKS THAT HAVE ALREADY DEVELOPED IN THE BASE. CONTRACTION JOINTS SHALL ALSO BE CONSTRUCTED AT BOTH SIDES OF ALL SPAN/PIERS STRUCTURES. MAXIMUM JOINT SPACING SHALL BE 20'.
  3. THE FORMING OF CONTRACTION JOINTS SHALL BE DONE WITH AN APPROVED FINISHING TOOL AT THE DISCRETION OF THE ENGINEER SUBJECT TO THE SATISFACTORY CONTROL OF CRACKING. THE SANDING OF CONTRACTION JOINTS IN THE BARRIER WALL SHALL NOT BE PERMITTED.
  4. REINFORCING BARS MEETING THE REQUIREMENTS OF AASHTO MANS1 (ASTM A615, GRADE 60), BE USED AS THE BARS BETWEEN THE MEDIAN BARRIER BASE AND THE MEDIAN BARRIER WALL.
  5. PAYMENT FOR THE WORK SHOWN WILL BE MADE AT THE CONTRACT UNIT PRICE PER EACH FROM "CONCRETE MEDIAN BARRIER TRANSITION, TYPE F."
  6. CUTTER PROFILE IN THE VICINITY OF SAC VERTICAL CURVES, ALONG FLAT GRADES AND AT THE MEETING OF PROPOSED AND EXISTING GUTTER, SHALL BE CAREFULLY CONTROLLED AND FIELD ADJUSTED IF NECESSARY TO ENSURE POSITIVE DRAINAGE AND AVOID PONDING.
  7. VARIES IN AREAS OF GRADES LESS THAN 0.2% FROM 2" TO 3/4".
  8. VARIES IN AREAS OF GRADES LESS THAN 0.2% FROM 2" TO 3/4".
  9. MINIMUM DIMENSIONS ARE SHOWN. ACTUAL DIMENSIONS SHALL BE AS REQUIRED TO MATCH BRIDGE BARRIER SHOWN ON BRIDGE PLANS.
  10. 10' RADII IS OPTIONAL.
  11. P.J.F. DENOTES PREFORMED JOINT FILLER. 1" P.J.F. SHALL BE INSTALLED FULL HEIGHT AS SHOWN BETWEEN FACES OF CONCRETE.

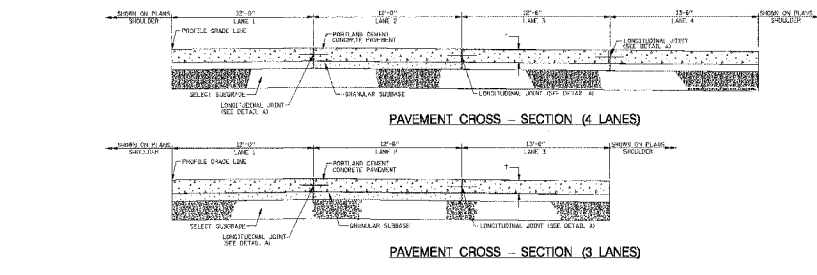
SHEET 2 OF 2

APPROVED: [Signature] DATE: 5-28-2004

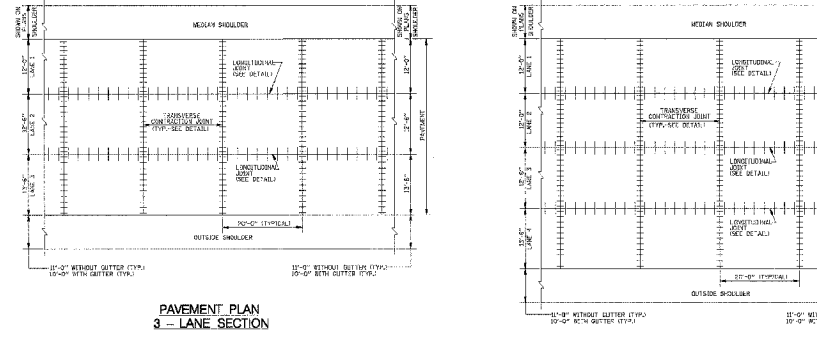
CTE ENGINEERS  
CONSEIL TORONTO ENGINEERS, P.L.C.

THE ILLINOIS STATE TOLL HIGHWAY AUTHORITY  
2700 OGDEN AVENUE  
DOWNERS GROVE, ILLINOIS 60515

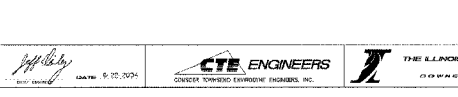
NO.	DATE	REVISION	DESCRIPTION	STANDARD SD 04-199	DRAWING NO.
				CONCRETE MEDIAN BARRIER TRANSITION AT BRIDGE APPROACHES	C11



PAVEMENT CROSS - SECTION (4 LANES)



PAVEMENT CROSS - SECTION (3 LANES)



PAVEMENT PLAN  
3 - LANE SECTION



PAVEMENT PLAN  
4 - LANE SECTION

SHEET 2 OF 2

APPROVED: [Signature] DATE: 5-28-2004

CTE ENGINEERS  
CONSEIL TORONTO ENGINEERS, P.L.C.

THE ILLINOIS STATE TOLL HIGHWAY AUTHORITY  
2700 OGDEN AVENUE  
DOWNERS GROVE, ILLINOIS 60515

NO.	DATE	REVISION	DESCRIPTION	STANDARD SD 04-31A	DRAWING NO.
				J.P.C. PAVEMENT	A7

REVISIONS	
NAME	DATE

ILLINOIS DEPARTMENT OF TRANSPORTATION

ISTHA STANDARDS

SCALE: VERT. N/A  
HORIZ. N/A

DATE: SEPTEMBER 14, 2005

DRAWN BY: KRL  
CHECKED BY: PDS