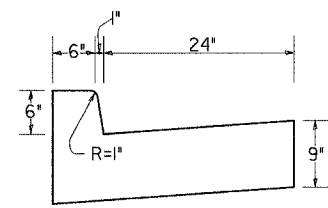
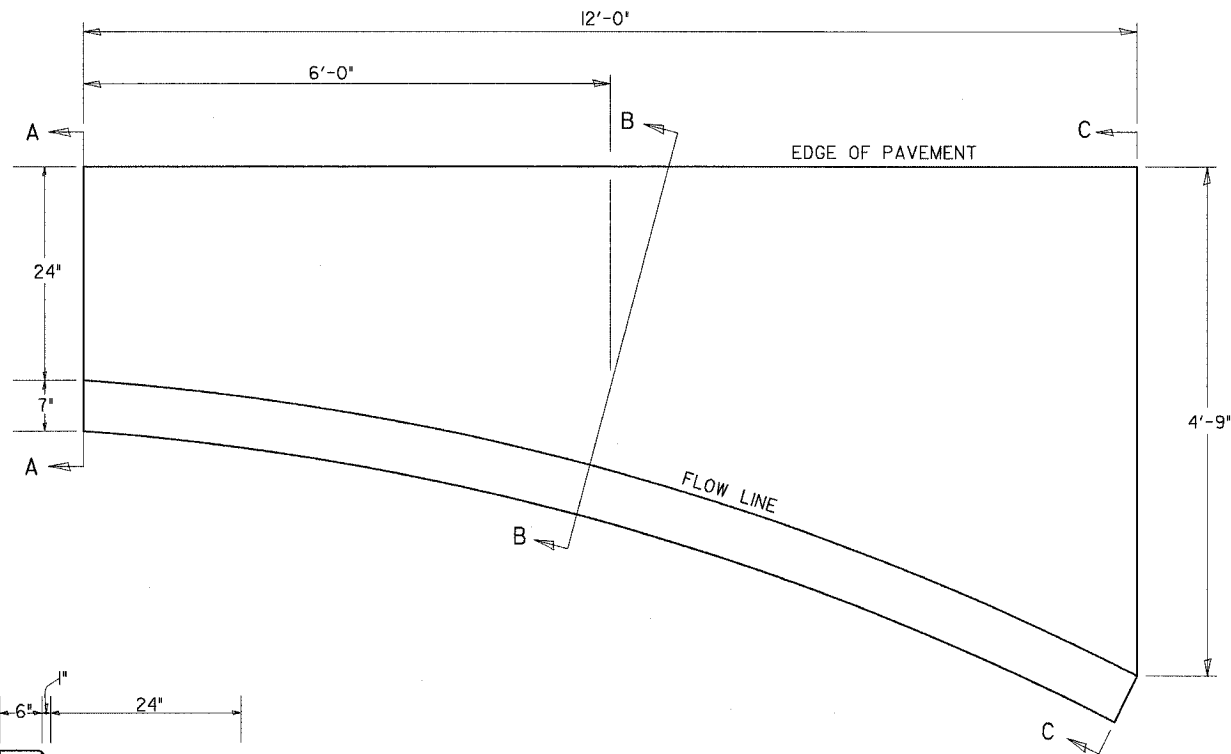
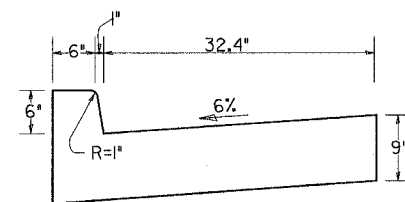


F.A.P. RTE.	SECTION	COUNTY	TOTAL SHEETS	SHEET NO.
303	129K	WINNEBAGO	585	287
STA.		TO STA.		
FED. ROAD DIST. NO.	ILLINOIS	FED. AID PROJECT		

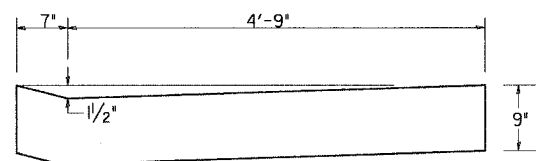
STANDARD INLET FOR CURB & GUTTER TYPE B-6.24



SECTION A-A



SECTION B-B



SECTION C-C

NOTES

Class SI Concrete shall be used throughout.

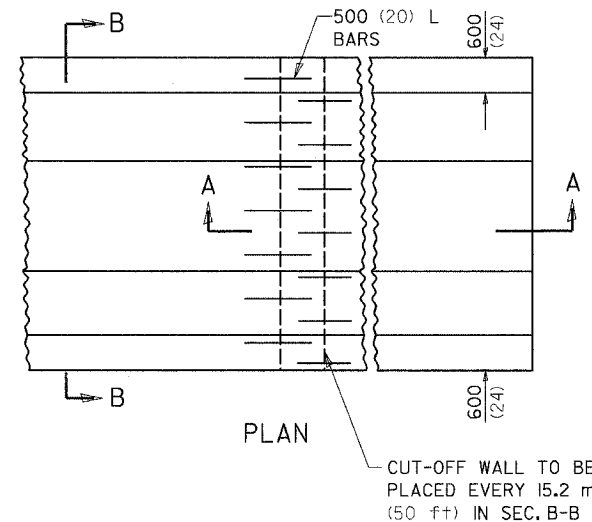
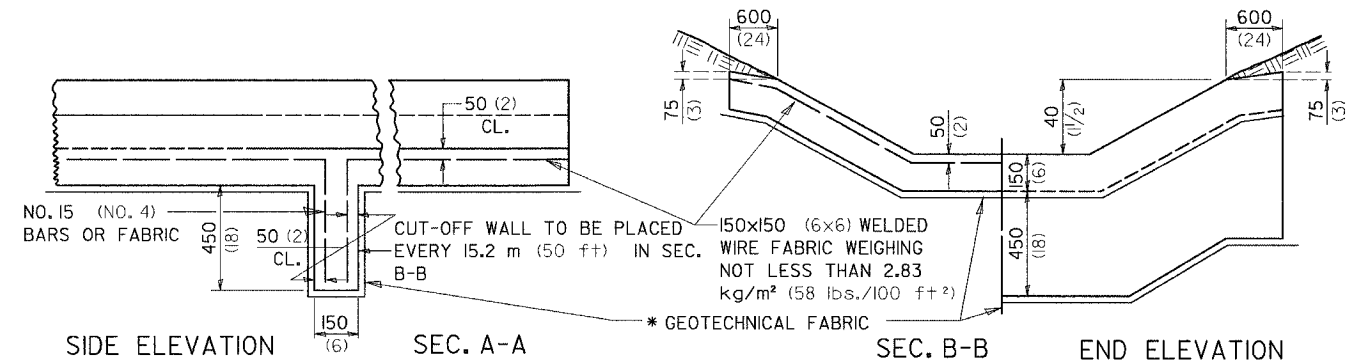
The Curb and Gutter Inlet will be paid for at the contract unit price per cubic yard for Class SI Concrete (OUTLETS).

Joints shall be constructed in accordance with the requirements of Article 606.06 of the Standard Specifications.

When curb and gutter is constructed adjacent to flexible pavement, an expansion joint shall be installed at construction joints.

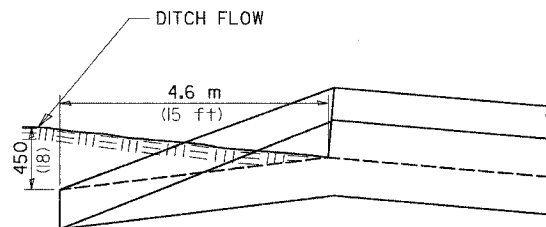
- QUANTITY -
Section A-A to C-C
(1.23 Cu. Yds.)
Class SI Concrete

PAVED DITCH DETAILS



NOTES:

- CLASS SI CONCRETE SHALL BE USED THROUGHOUT.
- WELDED WIRE FABRIC SHALL BE 150x150 (6x6) MESH, NO. 15 (NO. 4) GAGE, 2.83 kg/m² (58 lbs/100 ft²), CONFORMING TO THE REQUIREMENTS OF A.S.T.M. A185.
- 13 (1/2) PREMOULDED JOINT FILLER SHALL BE PLACED AT THE JUNCTION OF PAVED DITCH WITH ANY OTHER STRUCTURE.
- CUT-OFF WALLS SHALL BE CONSTRUCTED MONOLITHICALLY WITH THE PAVED DITCH.
- AT THE OPTION OF THE CONTRACTOR, NO. 15 (NO. 4) L 500 (20) REINFORCING BARS PLACED AT 300 (12) CENTERS LONGITUDINALLY IN PAVED DITCH AND VERTICALLY IN CUT-OFF WALLS IN LIEU OF THE WELDED WIRE FABRIC.
- THE SOIL PLACED OVER THE 600 (24) FLATTENED SECTION OF THE DITCH SHALL BE TAMPED FIRMLY. THIS WORK SHALL BE INCLUDED IN THE UNIT PRICE FOR PAVED DITCH.
- PAVED DITCH SHALL BE CONSTRUCTED IN ACCORDANCE WITH ARTICLES 606.01 THROUGH 606.13.
- ALL DIMENSIONS ARE IN MILLIMETERS (INCHES UNLESS OTHERWISE NOTED).
- * THE GEOTECHNICAL FABRIC IS INCIDENTAL TO THE PAVED DITCH.



SIDE ELEVATION SHOWING METHOD OF BURYING UP STREAM AND DOWN STREAM END OF PAVED DITCH.
(SEE NOTE)

BASIS OF PAYMENT

PAVED DITCH WILL BE PAID FOR AT THE CONTRACT UNIT PRICE PER METRE (FOOT) MEASURED IN PLACE INCLUDING THE COST OF FURNISHING AND PLACING THE JOINT FILLER, THE WELDED WIRE FABRIC OR THE NO. 15 (NO. 4) REINFORCING BARS, AND THE NECESSARY EXCAVATION AND DISPOSAL OF SURPLUS MATERIALS.

PLOT DATE = #DATE#
FILE NAME = #FILE#
SCALE = #SCALE#
REFERENCE = #REF#