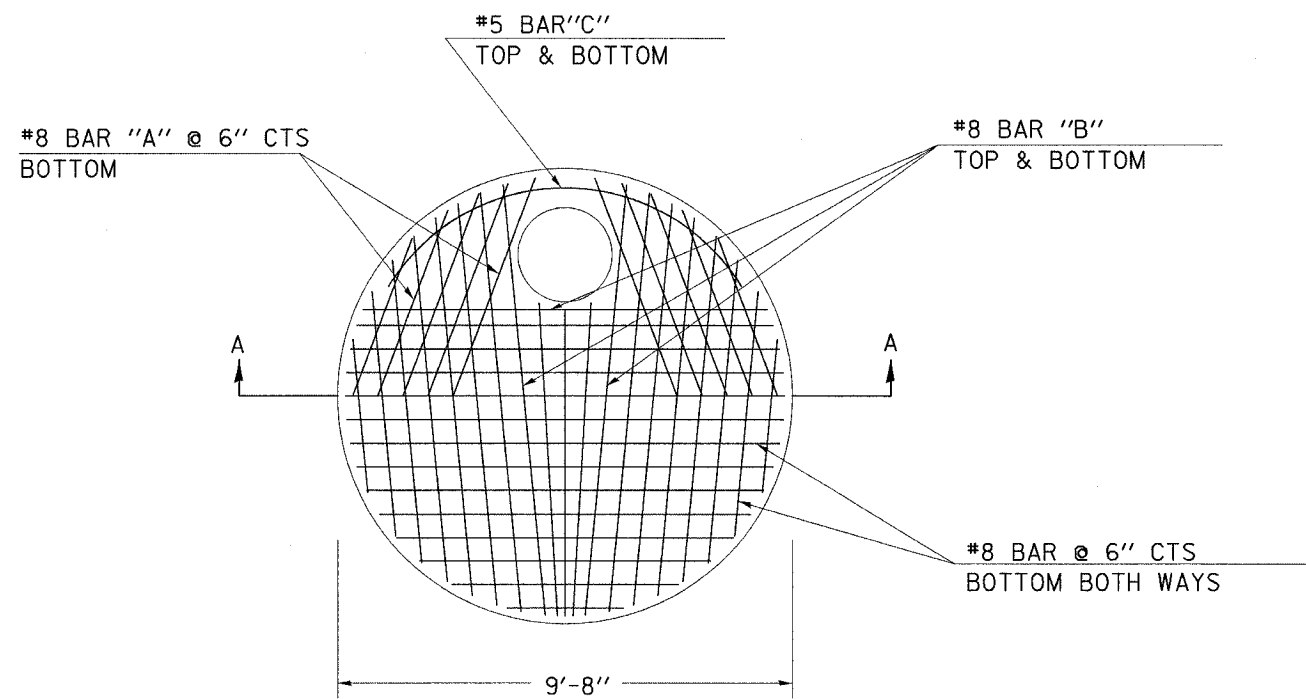
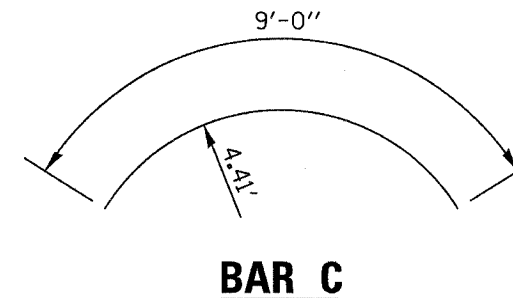


F.A.P. RTE.	SECTION	COUNTY	TOTAL SHEETS	SHEET NO.
303	129K	WINNEBAGO	585	305
STA.		TO STA.		
FED. ROAD DIST. NO.		ILLINOIS FED. AID PROJECT		

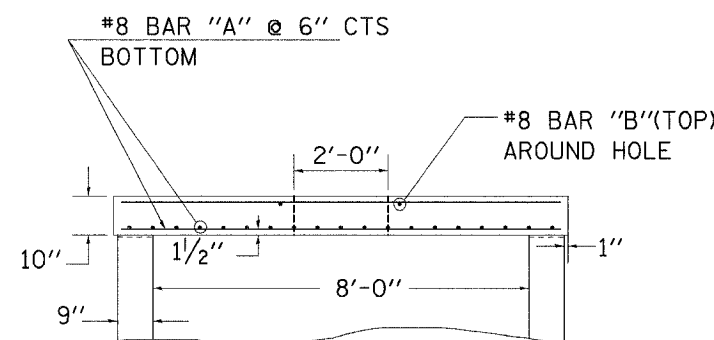
MANHOLES, SPECIAL



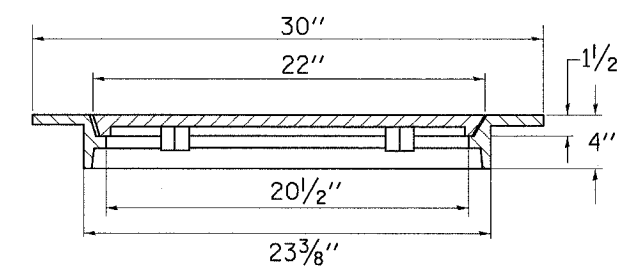
PLAN



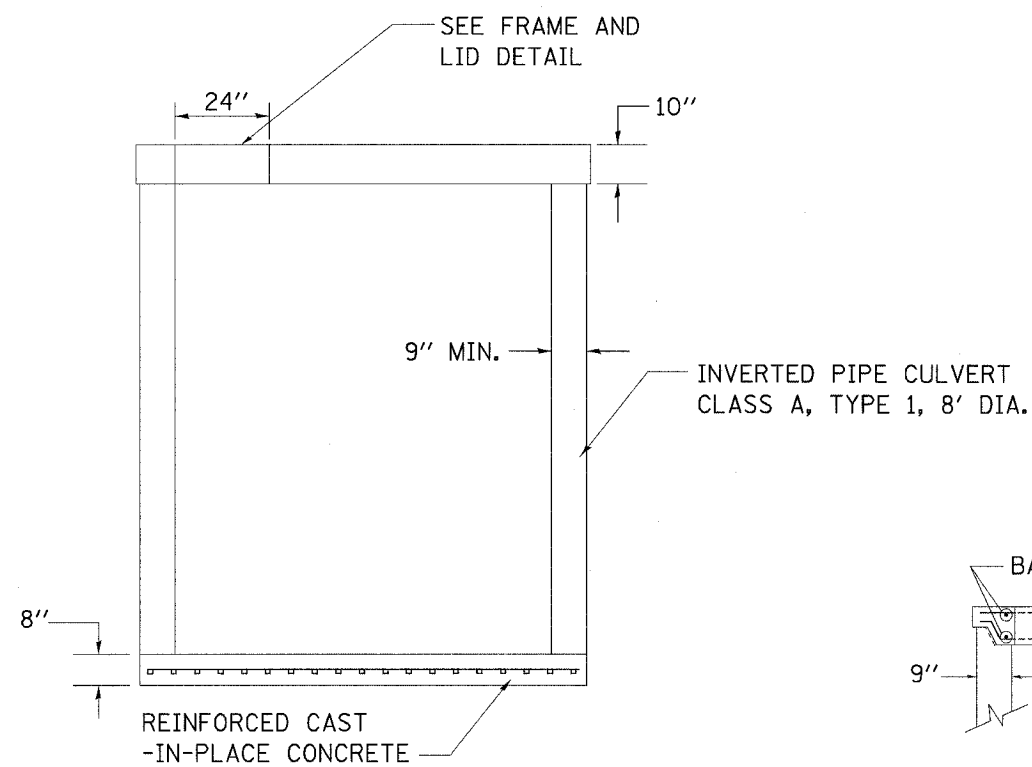
BAR C



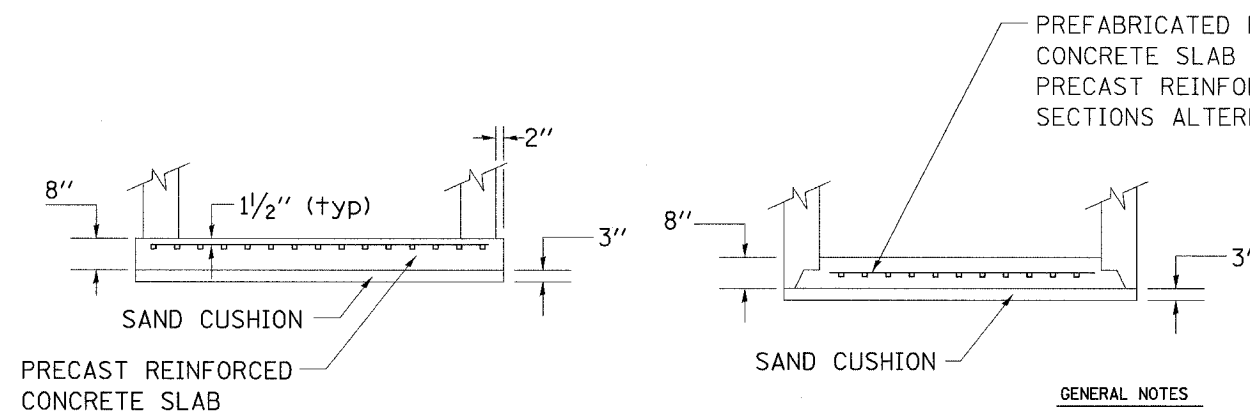
SECTION A-A



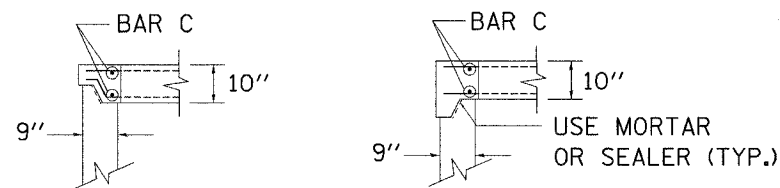
FRAME AND LID DETAIL



ELEVATION OF MH22A



ALTERNATE BOTTOM SLAB



ALTERNATE JOINT CONFIGURATIONS

GENERAL NOTES

THE MANHOLES, SPECIAL SHALL BE CONSTRUCTED ACCORDING TO SECTION 602 OF THE STANDARD SPECIFICATION AND AS SPECIFIED HEREIN.

THE MANHOLES, SPECIAL SHALL BE PAID FOR AT THE CONTRACT UNIT PRICE PER EACH, MANHOLES SPECIAL, WHICH PRICE SHALL INCLUDE ALL FRAMES, LIDS, CLASS SI CONCRETE, REINFORCEMENT BARS, SAND CUSHION, FLAT SLAB TOPS AND ALL EXCAVATION AND BACKFILLING.

•THE CONTRACTOR SHALL USE AN INVERTED PIPE CULVERT CLASS A, TYPE 1, 96" TO CONSTRUCT THE MANHOLES, SPECIAL.

•THE BOTTOM SLAB SHALL BE REINFORCED WITH A MINIMUM OF 0.46 SQ IN/FT IN BOTH DIRECTIONS.

•THE TOP SLAB SHALL BE CONSTRUCTED OF CLASS SI CONCRETE WITH A MINIMUM OF 1.495 SQ IN/FT OF REINFORCEMENT.

•LIFTING DEVICES SHALL BE APPROVED BY THE ENGINEER.

•AN OPTIONAL CLOSED LID CAN BE PLACED AT LOCATIONS SHOWN ON THE PLANS. ALL CLOSED LIDS SHALL CONFORM TO DISTRICT STANDARD 82.2 - "SPECIAL FRAME CLOSED LID".