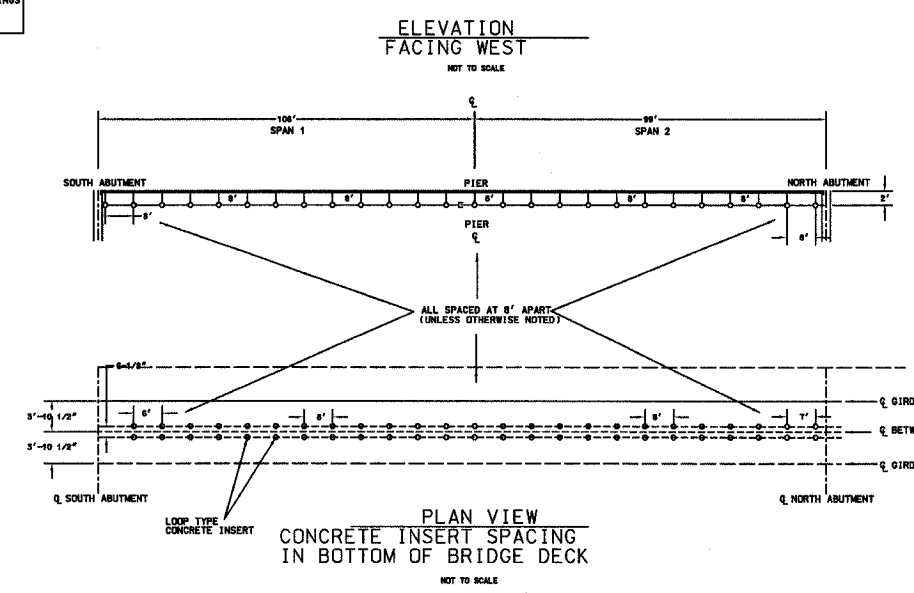


F.A.P. RTE.	SECTION	COUNTY	TOTAL SHEETS	SHEET NO.
303	I29K	WINNEBAGO	585	307
STA.		TO STA.		
FED. ROAD DIST. NO.	ILLINOIS	FED. AID PROJECT		

SYMBOL LIST

- - INTERMEDIATE HANGER
- ⬇ - ANCHORING HANGER WITH SPLIT STOP RINGS
- ⊕ - EXPANSION JOINT

IL RTE 173/ I-90 HANGER PLACEMENT DETAIL



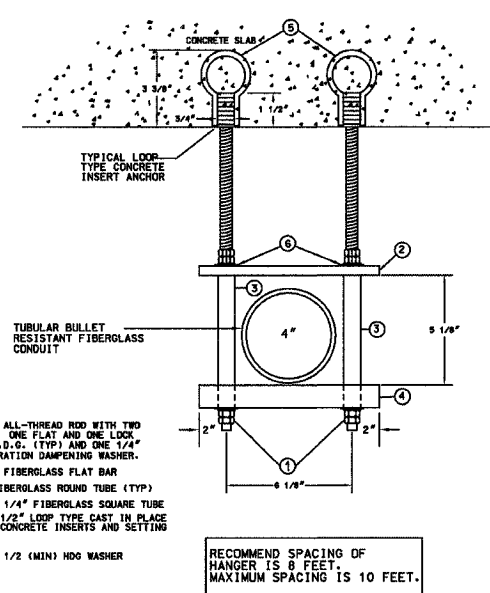
LOCATION OF ORDERING UTILITIES FOR REFERENCE ONLY. PLEASE CALL ALL APPLICABLE UTILITY LOCATIONS FOR EXACT LOCATION PRIOR TO BIDDING OR CONSTRUCTION.

NO.	DESCRIPTION	APPR.	DATE

APPROVED BY: _____

ADASTA
SCALE: VERT. 1/8\"/>

**IL RT 173/I-90
BRIDGE HANGER AND INSERT**



- ① 5/8" DIA. ALL-THREAD ROD WITH TWO HEX NUTS, ONE FLAT AND ONE LOCK WASHER, H.D.G. (TYP) AND ONE 1/4" NYLON VIBRATION DAMPING WASHER.
- ② 1/2" X 2" FIBERGLASS FLAT BAR
- ③ 1" D.D. FIBERGLASS ROUND TUBE (TYP)
- ④ 2" X 2" X 1/4" FIBERGLASS SQUARE TUBE
- ⑤ 5/8" X 3 1/2" LOOP TYPE CAST IN PLACE THREADED CONCRETE INSERTS AND SETTING PLUG.
- ⑥ 13/16 X 1 1/2 (MIN) HDG WASHER

RECOMMEND SPACING OF HANGER IS 8 FEET. MAXIMUM SPACING IS 10 FEET.

- NOTES:**
1. ALL HARDWARE (INCLUDING INSERTS) TO BE HOT DIPPED GALVANIZED IN ACCORDANCE WITH ASTM A123.
 2. ALL-THREAD ROD TO BE CUT FROM 12'-0" H.D.G. STOCK & ENDS TO BE COLD GALVANIZED AFTER SIZING & DRESSING OPERATION (A307).
 3. LOW POINT OF HANGER SHALL BE ABOVE BOTTOM FLANGE OF GIRDER BRIDGES AND ABOVE BOTTOM OF DECK FOR SLAB BRIDGES.

LOCATION OF ORDERING UTILITIES FOR REFERENCE ONLY. PLEASE CALL ALL APPLICABLE UTILITY LOCATIONS FOR EXACT LOCATION PRIOR TO BIDDING OR CONSTRUCTION.

NO.	DESCRIPTION	APPR.	DATE

APPROVED BY: _____

ADASTA
SCALE: VERT. 1/8\"/>

REVISIONS	
NAME	DATE

ILLINOIS DEPARTMENT OF TRANSPORTATION

BRIDGE HANGER AND INSERT DETAIL

SCALE: VERT. N/A
HORIZ. N/A
DATE: SEPTEMBER 14, 2005

DRAWN BY: BSL
CHECKED BY: PDS