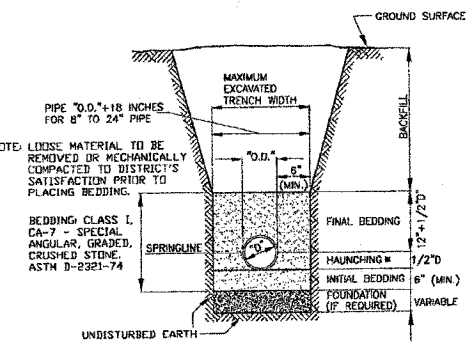
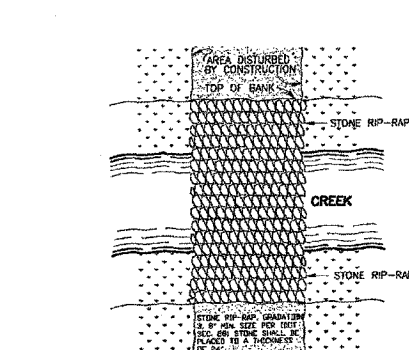


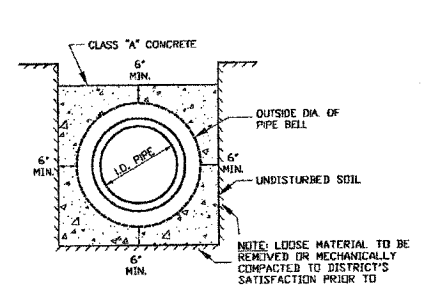
**CLAY, RCP & DIP PIPE BEDDING DETAIL**  
HAUNCHING TO BE WELL-TAMPED ALONG PIPE TO INSURE VOIDS ARE ELIMINATED



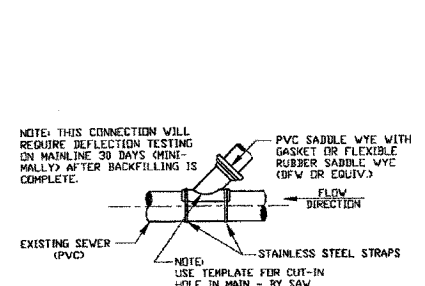
**PVC PIPE BEDDING DETAIL**  
HAUNCHING TO BE WELL-TAMPED ALONG PIPE TO INSURE VOIDS ARE ELIMINATED



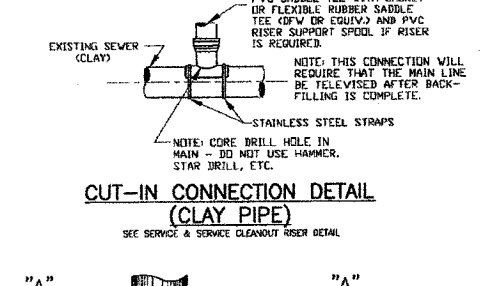
**STONE RIP-RAP DETAIL**  
TYPICAL



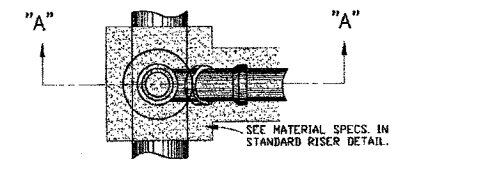
**ENCASEMENT DETAIL**



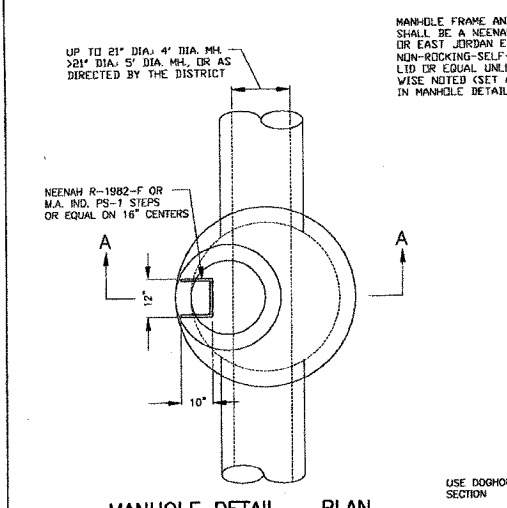
**CUT-IN CONNECTION DETAIL (PVC PIPE)**  
SEE SERVICE & SERVICE CLEANOUT RISER DETAIL



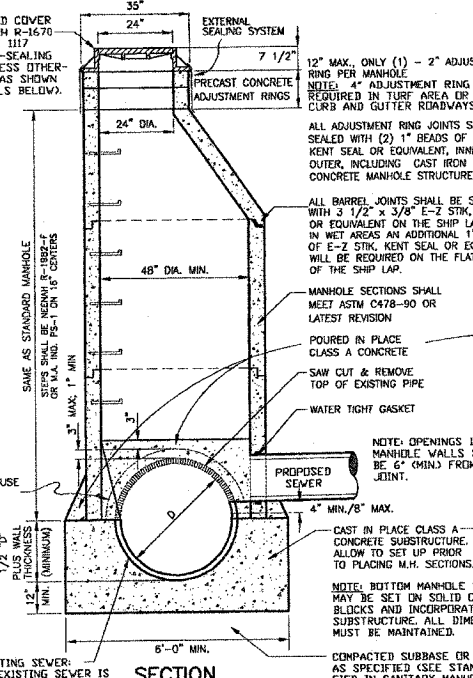
**CUT-IN CONNECTION DETAIL (CLAY PIPE)**  
SEE SERVICE & SERVICE CLEANOUT RISER DETAIL



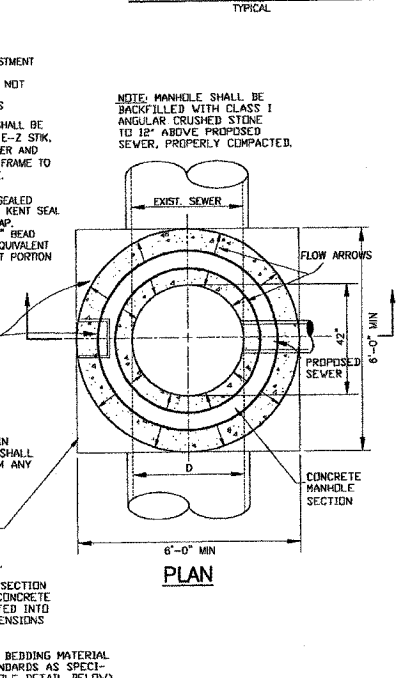
**PLAN VIEW (RISER DETAIL)**



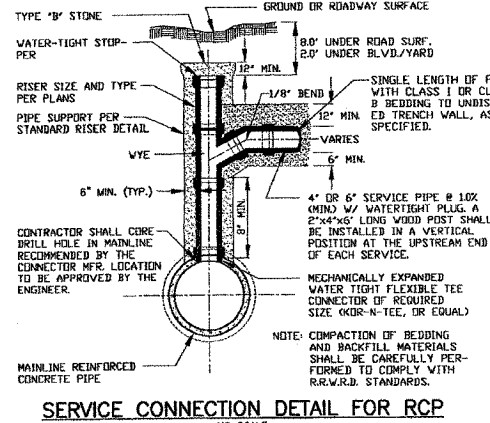
**MANHOLE DETAIL - PLAN**



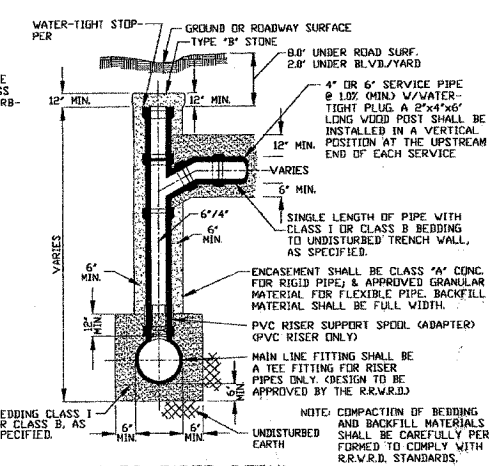
**MANHOLE CONSTRUCTED OVER EXISTING SEWER**  
APPLY TO 36" SEWER. NOTES FOR SANITARY MANHOLE AND SANITARY DROP MANHOLE APPLY. FOR LARGER SEWER CONTACT THE DISTRICT.



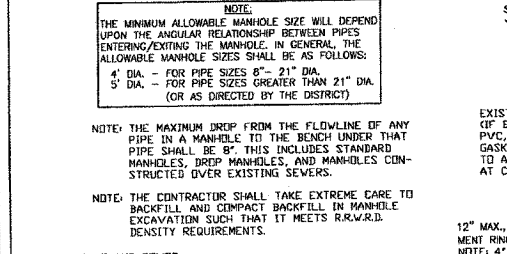
**SERVICE CONNECTION FOR PVC TRUNK SEWER**  
FOR PIPE 18" IN DIA. OR LARGER



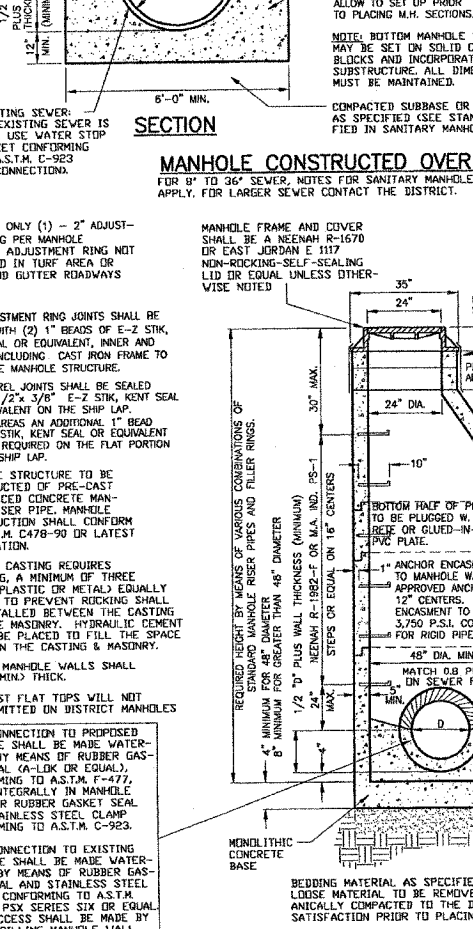
**SERVICE CONNECTION DETAIL FOR RCP**  
NO SCALE



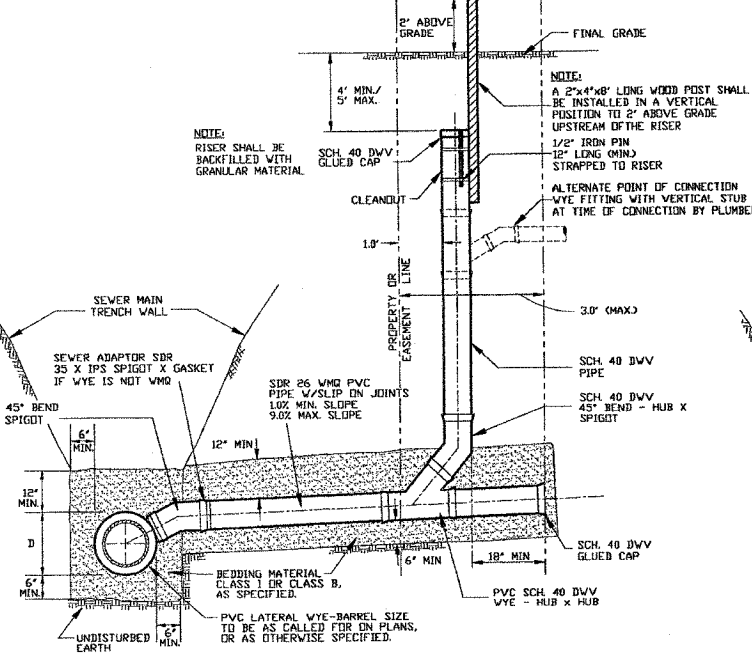
**STANDARD RISER DETAIL**  
SECTION A-A



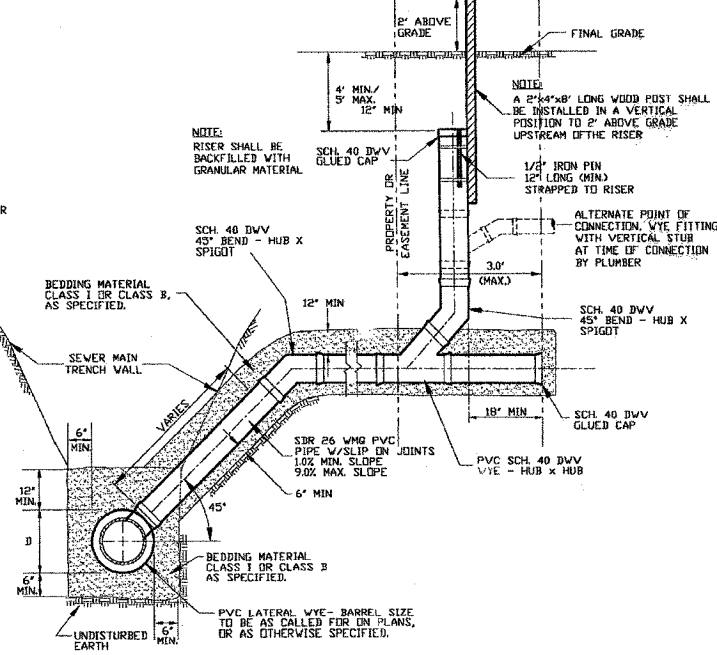
**SANITARY MANHOLE DETAIL**  
SECTION A-A



**SANITARY DROP MANHOLE DETAIL**  
SECTION A-A



**SERVICE & SERVICE CLEANOUT RISER**  
NO SCALE



**ALTERNATE SERVICE RISER DETAIL (WITH SERVICE CLEANOUT)**  
NO SCALE

**ROCK RIVER WATER RECLAMATION DISTRICT**  
3333 KISHWAUKEE ST., P.O. BOX 7480, ROCKFORD, ILLINOIS 61126-7480 - PH. (815) 387-7660/FAX (815) 387-7665

**STANDARD DETAIL SHEET**

FILE: RRWD.DWG  
SHEET 308 OF 385  
PLOT SCALE: 1"=80'

REV: 1/1/97 PAD	REV: 3/5/00 PAD	REV: 5/14/03 PAD
REV: 2/7/97 PAD	REV: 1/10/01 PAD	REV: 2/2/04 PAD
REV: 3/19/88 PAD	REV: 2/5/02 PAD	