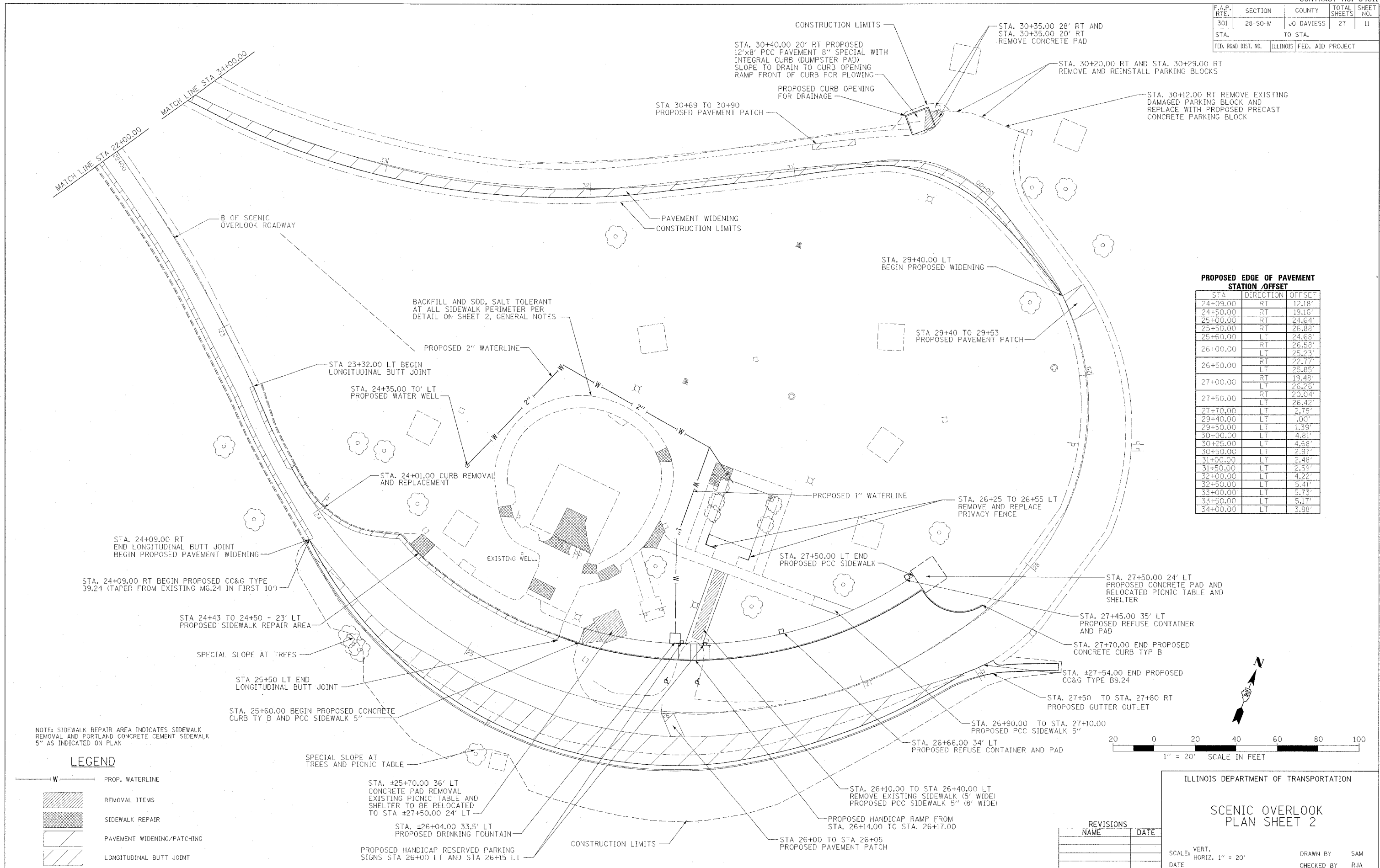


F.A.P. RTE.	SECTION	COUNTY	TOTAL SHEETS	SHEET NO.
301	28-50-M	JO DAVIESS	27	11
STA.		TO STA.		
FED. ROAD DIST. NO.		ILLINOIS FED. AID PROJECT		



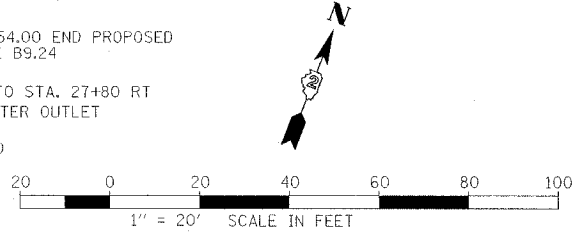
PROPOSED EDGE OF PAVEMENT STATION /OFFSET

STA.	DIRECTION	OFFSET
24+09.00	RT	12.18'
24+50.00	RT	19.16'
25+00.00	RT	24.64'
25+50.00	RT	26.88'
25+60.00	LT	24.68'
26+00.00	LT	26.58'
26+50.00	RT	22.77'
26+50.00	LT	25.85'
27+00.00	LT	26.28'
27+50.00	RT	19.48'
27+50.00	LT	26.42'
27+70.00	LT	2.75'
29+40.00	LT	.00'
29+50.00	LT	1.39'
30+00.00	LT	4.81'
30+25.00	LT	4.68'
30+50.00	LT	2.97'
31+00.00	LT	2.48'
31+50.00	LT	2.53'
32+00.00	LT	4.22'
32+50.00	LT	5.41'
33+00.00	LT	5.73'
33+50.00	LT	5.17'
34+00.00	LT	3.88'

NOTE: SIDEWALK REPAIR AREA INDICATES SIDEWALK REMOVAL AND PORTLAND CONCRETE CEMENT SIDEWALK 5" AS INDICATED ON PLAN

LEGEND

- W — PROP. WATERLINE
- REMOVAL ITEMS
- SIDEWALK REPAIR
- PAVEMENT WIDENING/PATCHING
- LONGITUDINAL BUTT JOINT



ILLINOIS DEPARTMENT OF TRANSPORTATION

SCENIC OVERLOOK PLAN SHEET 2

REVISIONS	
NAME	DATE

SCALE: VERT. 1" = 20'
HORIZ. 1" = 20'

DRAWN BY: SAM
CHECKED BY: RJA

PLOT DATE = 8/12/05
FILE NAME = 28-50-M-PLAN2.DWG
SCALE = 1" = 20'
REFERENCE = 8/12/05