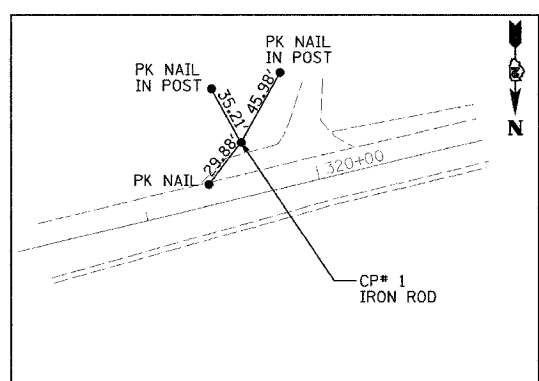
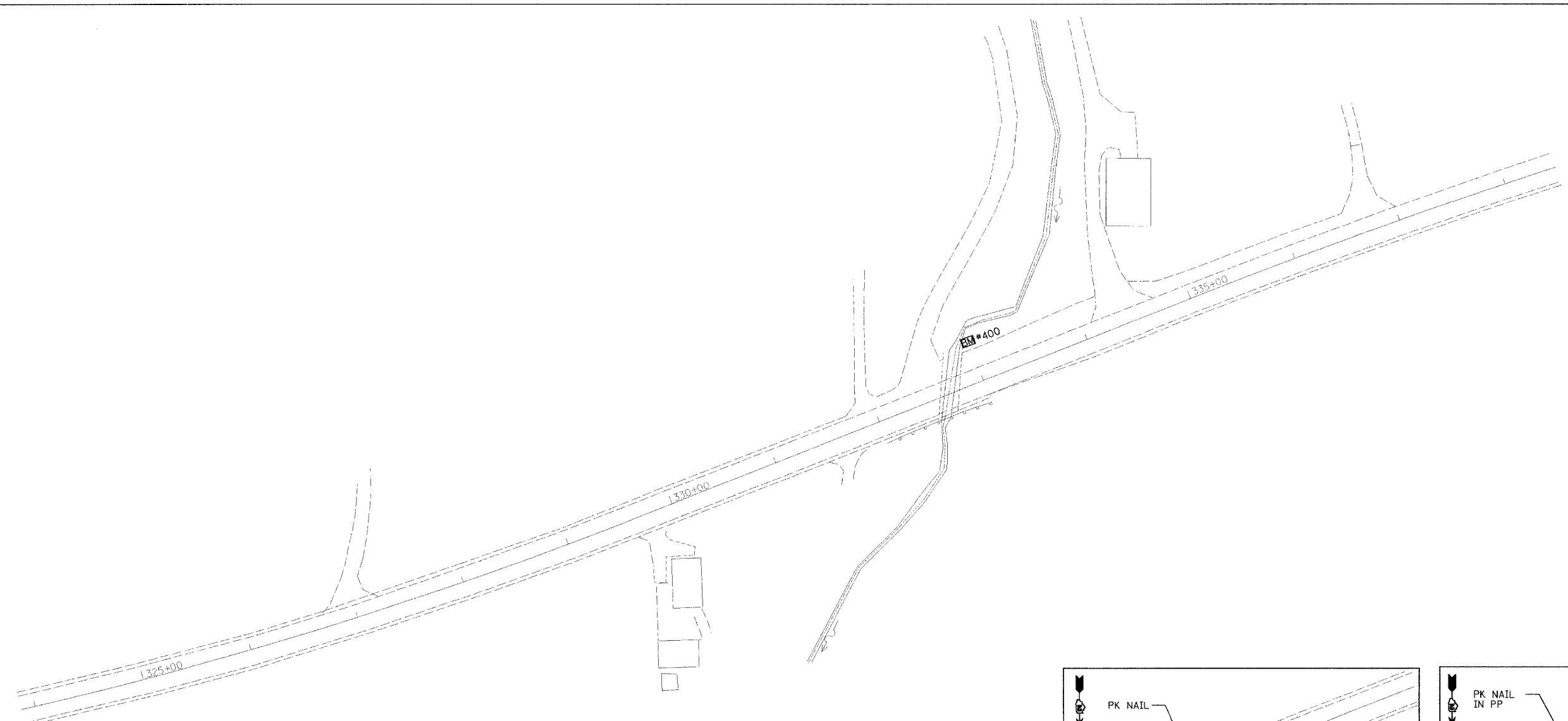


F&P ROUTE	SECTION	COUNTY	TOTAL SHEETS	SHEET NO
599	42MFT-T	ROCK ISLAND	90	15
STA. 326+50		TO STA. 336+10		

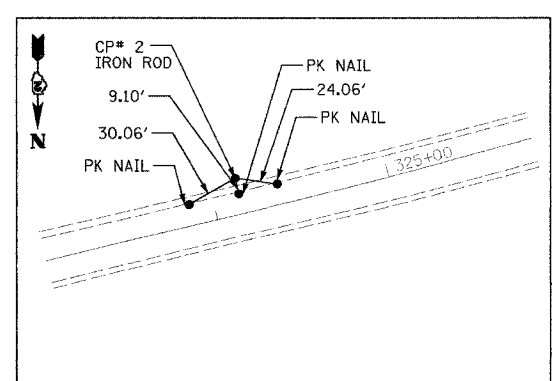
EXISTING CONDITIONS: CONTRACT 64641



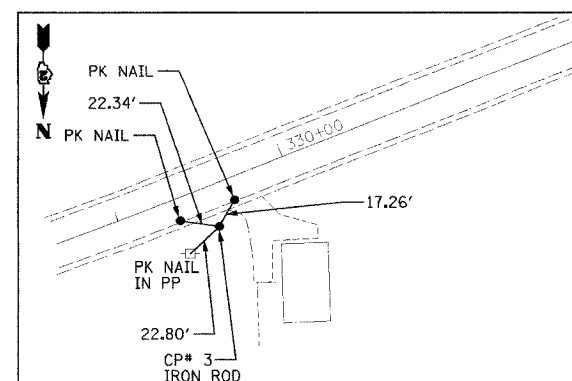
DATE: _____
 SURVEYED: _____
 ALIGNMENT CHECKED: _____
 PLAN NOTE BOOK



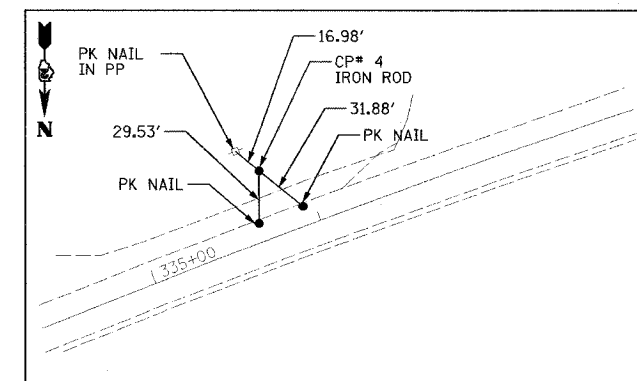
CONTROL POINT #1
 STA 319+61.77, 30.64 LT
 N 1740274.38
 E 2154966.55
 ELEV. 589.62



CONTROL POINT #2
 STA 324+15.05, 20.37 LT
 N 1740178.69
 E 2154523.33
 ELEV. 595.51



CONTROL POINT #3
 STA 329+52.68, 23.18 RT
 N 1740060.24
 E 2153997.29
 ELEV. 585.98



CONTROL POINT #4
 STA 335+77.21, 38.46 LT
 N 1739774.26
 E 2153438.02
 ELEV. 589.74

BENCHMARKS

BM 400 CUT "□" SOUTH EAST CORNER OF WEST WINGWALL @ SOUTH WEST QUAD OF IL 92 & 85th ST WEST STA. 332+97.0 37.8 LT ELEV. 579.76

BM 401 CUT "□" ON SOUTH HEADWALL .2 MILES WEST OF 85th ST WEST STA. 344+60.3 17.9 LT ELEV. 589.23

NOTE:
 BASIS OF BEARINGS AND COORDINATES IS ILLINOIS STATE PLANE (NAD83) WEST ZONE. GROUND VALUES SHOWN (COMBINED GRID FACTOR FOR PROJECT AREA 0.999942580). NGS MONUMENTS BUR40-1A & BUR40-1B WERE USED FOR CONTROL.

REVISIONS	
NAME	DATE

ILLINOIS DEPARTMENT OF TRANSPORTATION
 FAP 599 (IL 92)
 SECTION 42MFT-T
 ROCK ISLAND COUNTY
 ALIGNMENT & TIES
 BENCHMARKS

DRAWN BY: HLC

08/31/2005
 DATE TIME
 CON SPEC
 REF
 REF