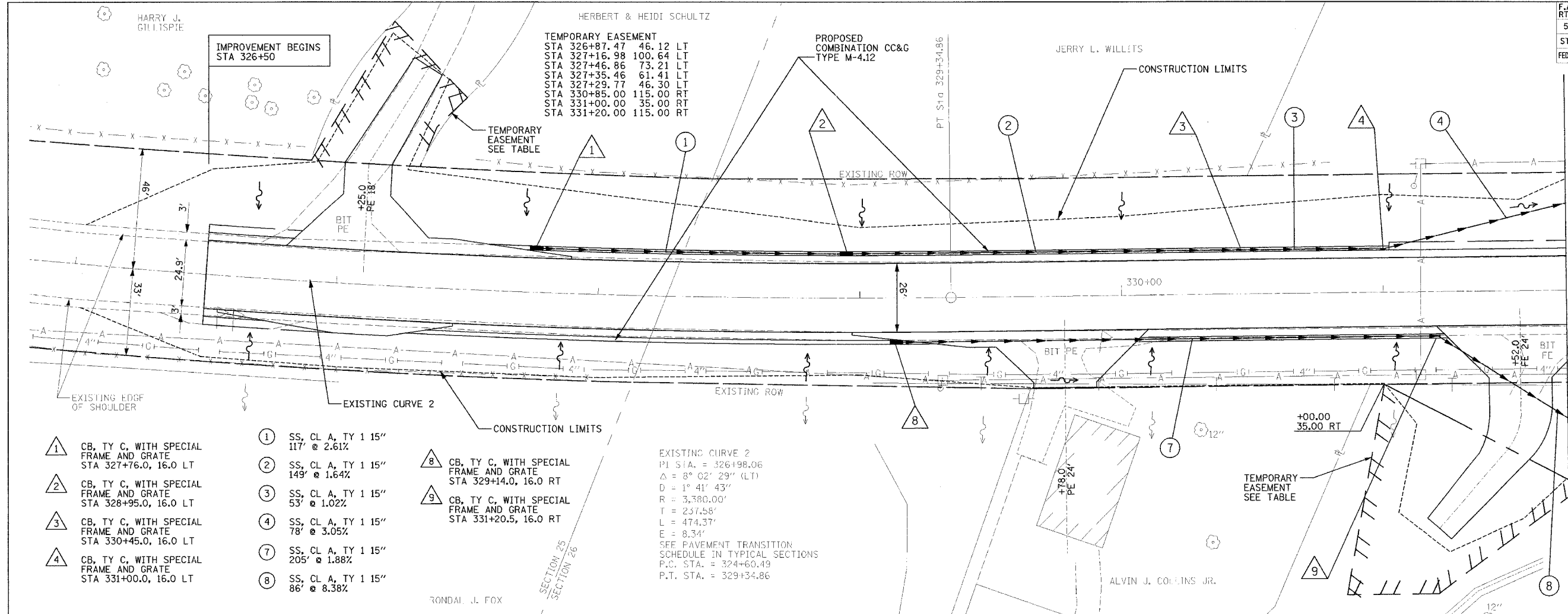


F.A.P. R.F.C.I.	SECTION	COUNTY	TOTAL SHEETS	SHEET NO.
599	42MFT-T	ROCK ISLAND	90	28
STA. 326+50		TO STA. 331+70		
FED. ROAD DIST. NO.	ILLINOIS FED. AID PROJECT		CONTRACT 64641	

HERBERT & HEIDI SCHULTZ

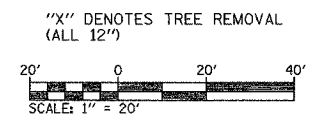
TEMPORARY EASEMENT

STA 326+87.47	46.12	LT
STA 327+16.98	100.64	LT
STA 327+46.86	73.21	LT
STA 327+36.46	61.41	LT
STA 327+28.77	46.30	LT
STA 330+85.00	115.00	RT
STA 331+00.00	35.00	RT
STA 331+20.00	115.00	RT



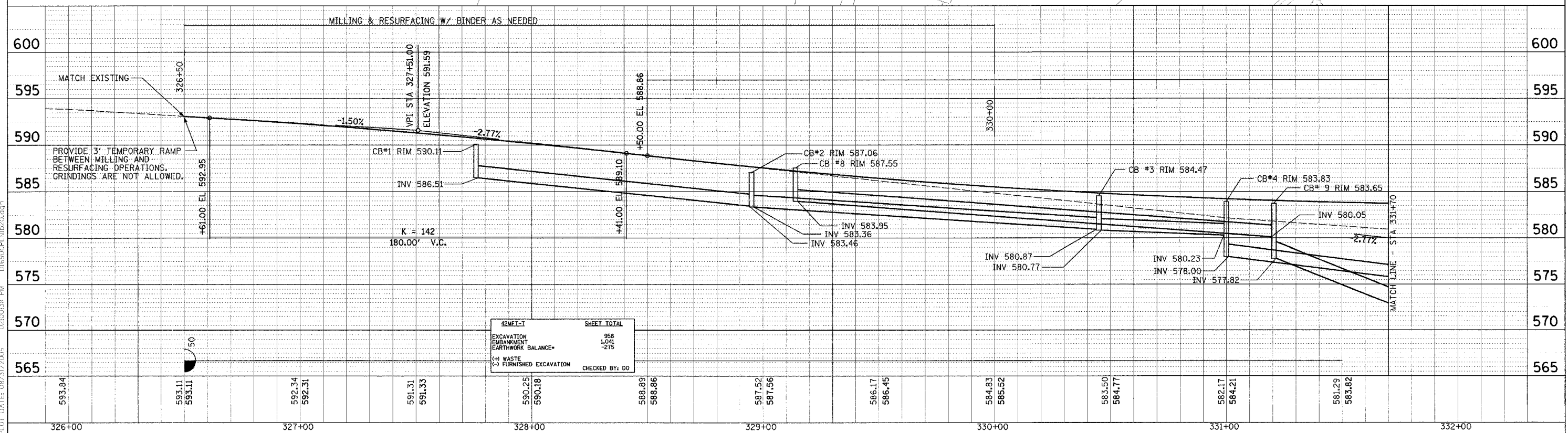
- 1 CB, TY C, WITH SPECIAL FRAME AND GRATE STA 327+76.0, 16.0 LT
- 2 CB, TY C, WITH SPECIAL FRAME AND GRATE STA 328+95.0, 16.0 LT
- 3 CB, TY C, WITH SPECIAL FRAME AND GRATE STA 330+45.0, 16.0 LT
- 4 CB, TY C, WITH SPECIAL FRAME AND GRATE STA 331+00.0, 16.0 LT
- 1 SS, CL A, TY 1 15" 117' @ 2.61%
- 2 SS, CL A, TY 1 15" 149' @ 1.64%
- 3 SS, CL A, TY 1 15" 53' @ 1.02%
- 4 SS, CL A, TY 1 15" 78' @ 3.05%
- 7 SS, CL A, TY 1 15" 205' @ 1.88%
- 8 SS, CL A, TY 1 15" 86' @ 8.38%
- 8 CB, TY C, WITH SPECIAL FRAME AND GRATE STA 329+14.0, 16.0 RT
- 9 CB, TY C, WITH SPECIAL FRAME AND GRATE STA 331+20.5, 16.0 RT

EXISTING CURVE 2
 P.I. STA. = 326198.06
 $\Delta = 8^{\circ} 02' 29''$ (LT)
 $D = 1^{\circ} 41' 43''$
 $R = 3,380.00'$
 $T = 237.58'$
 $L = 474.37'$
 $E = 8.34'$
 SEE PAVEMENT TRANSITION SCHEDULE IN TYPICAL SECTIONS
 P.C. STA. = 324+60.49
 P.T. STA. = 329+134.86



DATE	
BY	
CHECKED	
IN CHARGE	
DATE	
BY	
CHECKED	
IN CHARGE	

DATE	
BY	
CHECKED	
IN CHARGE	
DATE	
BY	
CHECKED	
IN CHARGE	



42MFT-T	SHEET TOTAL
EXCAVATION	958
EMBANKMENT	1,041
EARTHWORK BALANCE*	-275
(+) WASTE	
(-) FURNISHED EXCAVATION	
CHECKED BY: DO	