

TEMPORARY EASEMENT

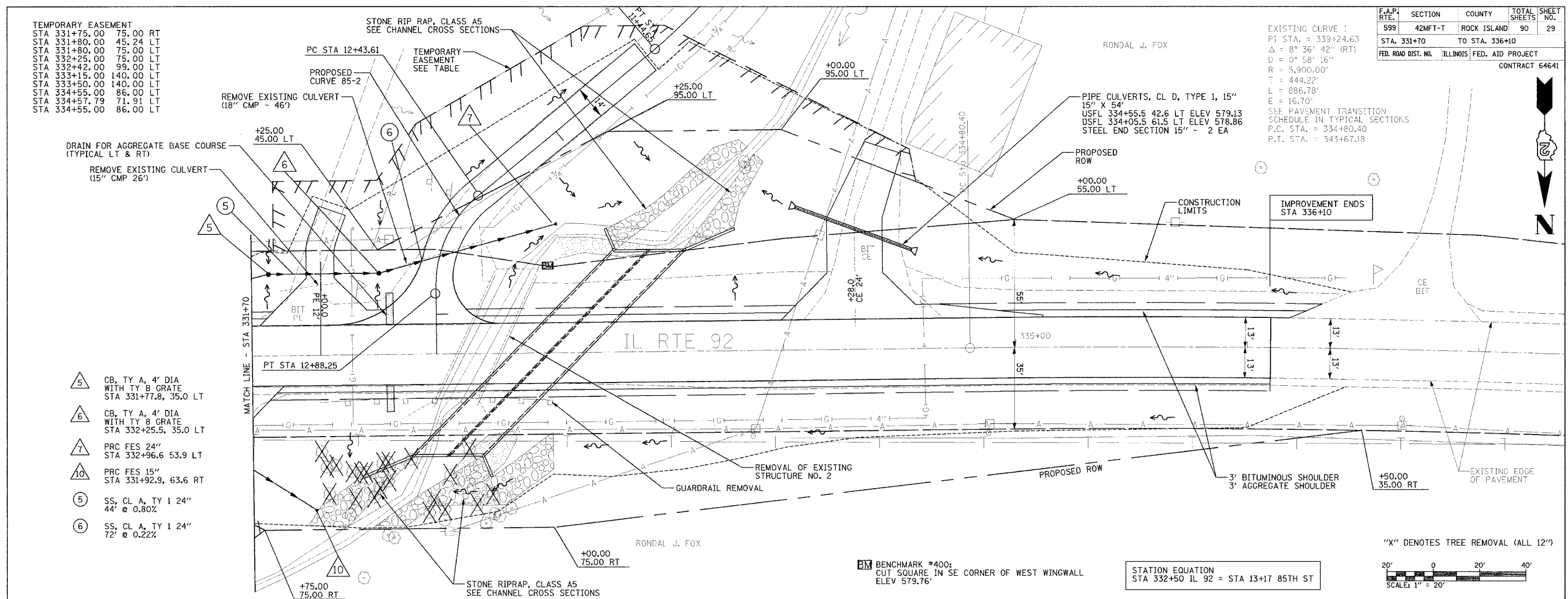
STA 331+75.00	75.00 RT
STA 331+80.00	45.24 LT
STA 331+80.00	75.00 LT
STA 332+25.00	75.00 LT
STA 332+42.00	99.00 LT
STA 333+15.00	140.00 LT
STA 333+50.00	140.00 LT
STA 334+55.00	86.00 LT
STA 334+57.79	71.91 LT
STA 334+55.00	86.00 LT

F.A.P. RTE.	SECTION	COUNTY	TOTAL SHEETS	SHEET NO.
599	42MFT-T	ROCK ISLAND	90	29
STA. 331+70		TO STA. 336+10		
FED. ROAD DIST. NO.		ILLINOIS FED. AID PROJECT		CONTRACT 64641

EXISTING CURVE:  
 PI STA. = 339+24.63  
 $\Delta = 8^{\circ} 36' 42''$  (RT)  
 $U = 0^{\circ} 58' 16''$   
 $R = 5,900.00'$   
 $T = 444.22'$   
 $L = 886.78'$   
 $E = 16.70'$   
 SEE PAVEMENT TRANSITION SCHEDULE IN TYPICAL SECTIONS  
 P.C. STA. = 334+80.40  
 P.T. STA. = 343+67.18

DATE	
REVISION	
NO.	
DATE	
BY	
DATE	
BY	
DATE	
BY	
DATE	
BY	
DATE	
BY	

DATE	
REVISION	
NO.	
DATE	
BY	
DATE	
BY	
DATE	
BY	
DATE	
BY	

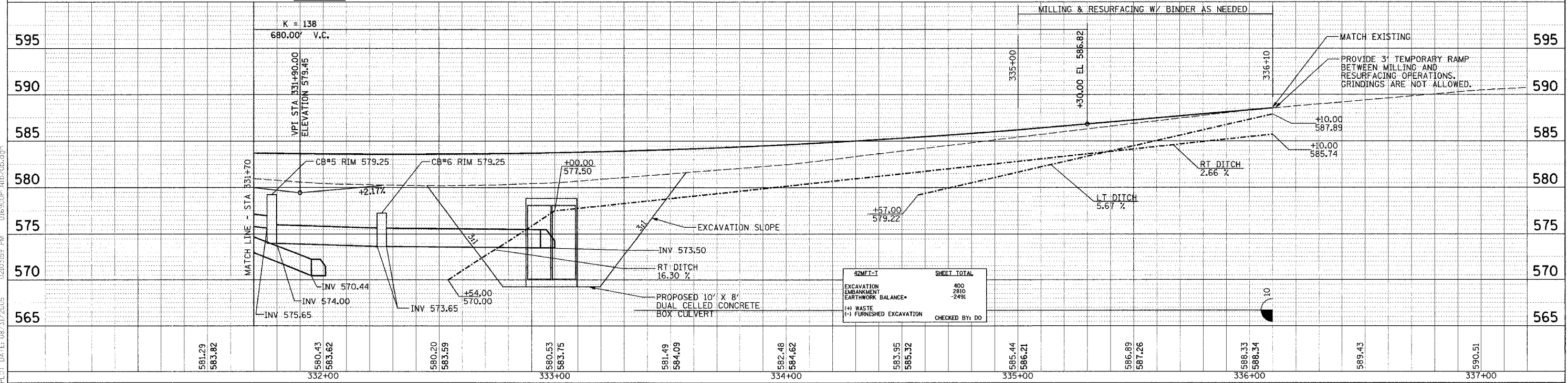


- 5 CB, TY A, 4' DIA WITH TY B GRATE STA 331+77.8, 35.0 LT
- 6 CB, TY A, 4' DIA WITH TY B GRATE STA 332+25.5, 35.0 LT
- 7 PRC FES 24\"/>

BENCHMARK #400: CUT SQUARE IN SE CORNER OF WEST WINGWALL ELEV 579.76'

STATION EQUATION  
 STA 332+50 IL 92 = STA 13+17 85TH ST

"X" DENOTES TREE REMOVAL (ALL 12")



PLOT DATE: 08/31/2005 02:04:59 PM D:\6950P-NID\2004\90