

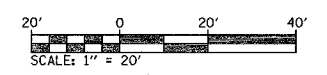
F.A.P. RTE.	SECTION	COUNTY	TOTAL SHEETS	SHEET NO.
599	42MFT-T	ROCK ISLAND	90	30
STA. 10+00		TO STA. 13+00		
FED. ROAD DIST. NO.	ILLINOIS FED. AID PROJECT			
CONTRACT 64641				

STATION EQUATION
STA 332+50 IL 92 = STA 13+17 85TH ST

EXISTING CURVE 85-1
PI STA = 10+80.41
 $\Delta = 38^\circ 18' 21''$ (RT)
D = 28° 38' 52"
T = 69.46'
R = 200.00'
L = 133.71'
E = 11.72'
PC STA = 10+10.94
PT STA = 11+44.65

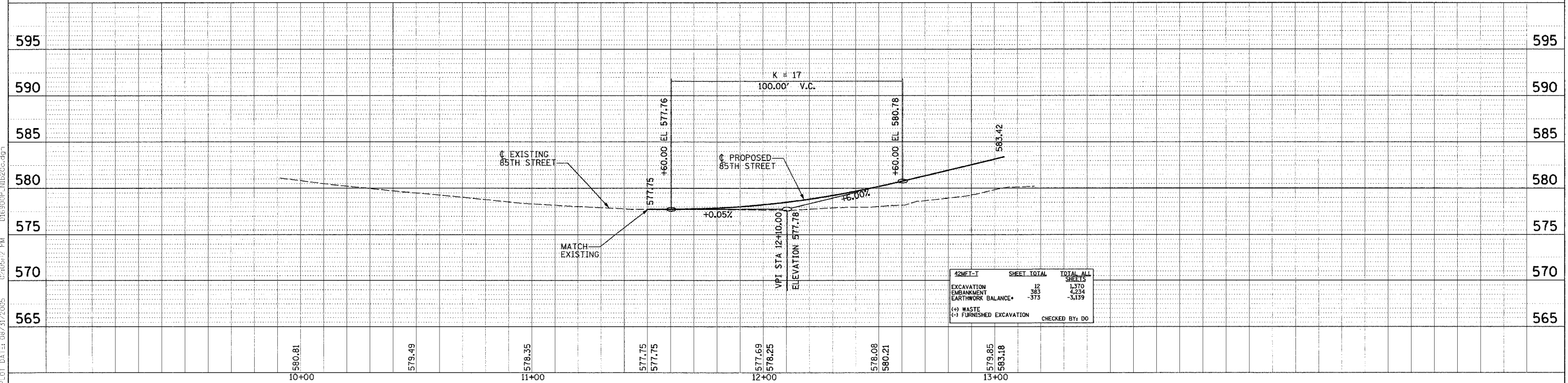
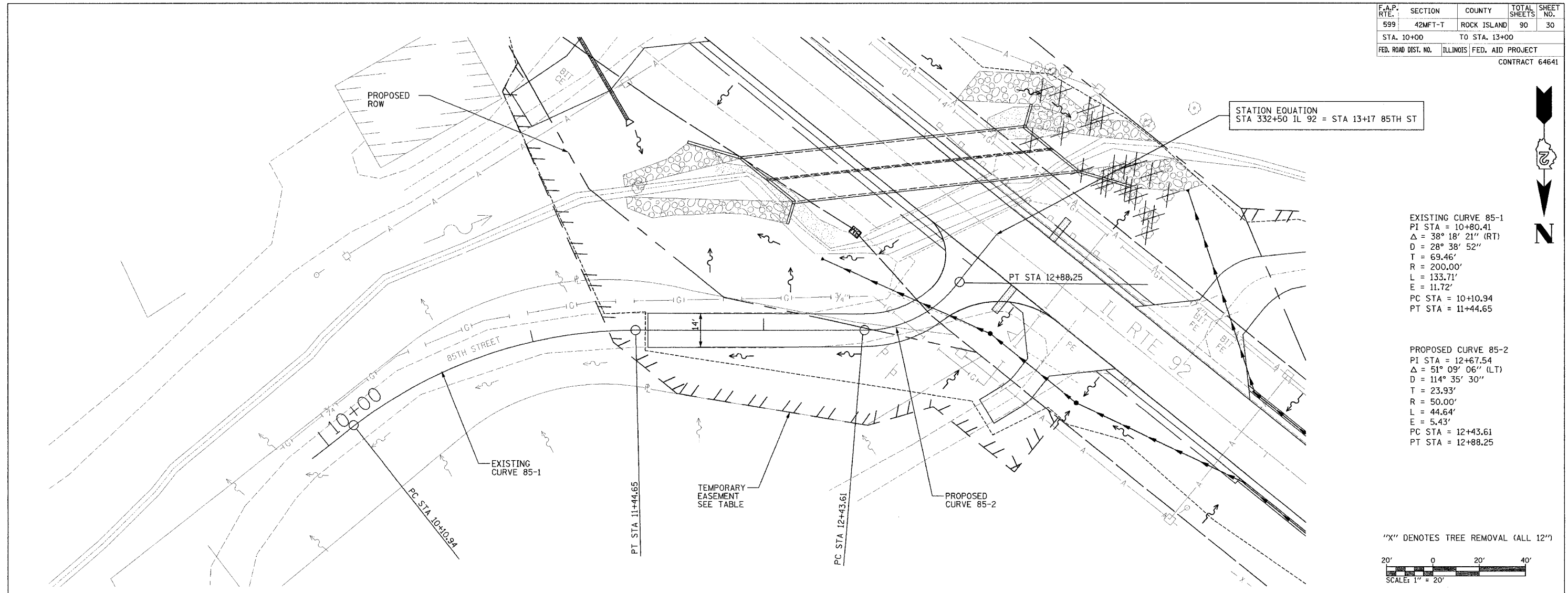
PROPOSED CURVE 85-2
PI STA = 12+67.54
 $\Delta = 51^\circ 09' 06''$ (LT)
D = 114° 35' 30"
T = 23.93'
R = 50.00'
L = 44.64'
E = 5.43'
PC STA = 12+43.61
PT STA = 12+88.25

"X" DENOTES TREE REMOVAL (ALL 12")



DATE	
BY	
PROJECT	
NO. 1000	
NO.	

DATE	
BY	
PROJECT	
NO. 1000	
NO.	



42MFT-T	SHEET TOTAL	TOTAL ALL SHEETS
EXCAVATION	125	1,370
EMBANKMENT	283	4,234
EARTHWORK BALANCE	-373	-3,139
(+) WASTE		
(-) FURNISHED EXCAVATION		
CHECKED BY: DO		