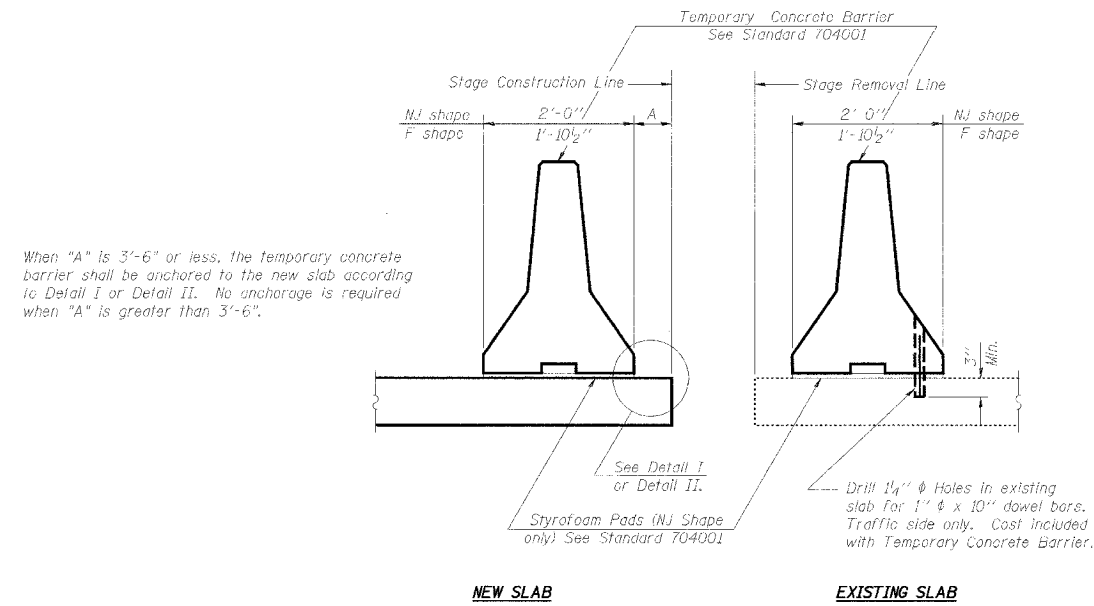


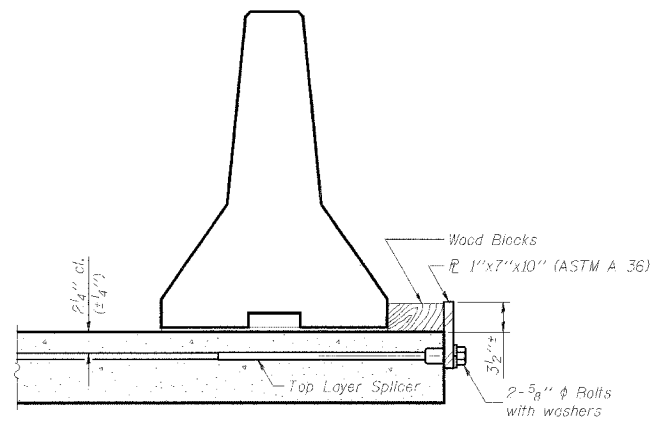
STATE OF ILLINOIS
DEPARTMENT OF TRANSPORTATION

Sheet No. 3
of 7 Sheets

ROUTE NO.	SECTION	COUNTY	TOTAL SHEETS	SHEET NO.
FAP 599	*	ROCK ISLAND	90	37
FEDERAL DISTRICT	ILLINOIS	PROJECT		
*42 MFT-BR			CONTRACT NO. 61641	

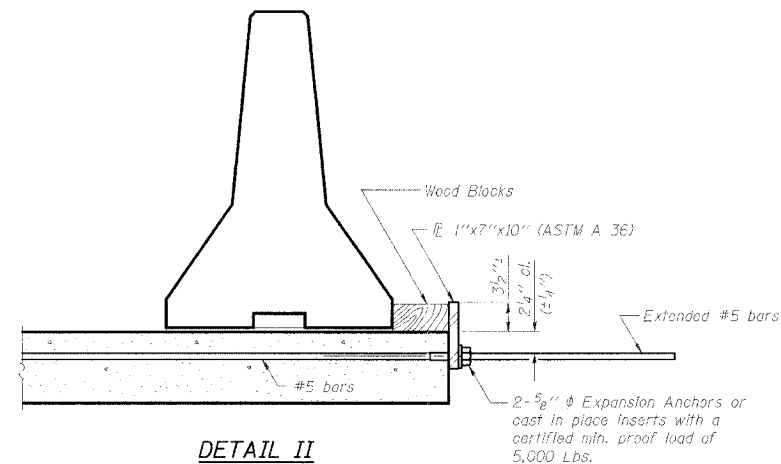


SECTIONS THRU SLAB



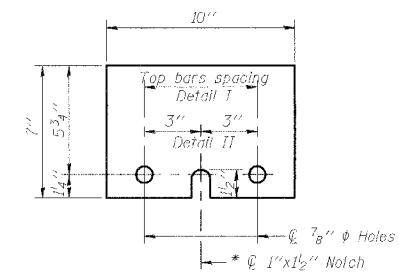
DETAIL I

The 1"x7"x10" Plate shall not be removed until Stage II Construction Forms and reinforcement bars are in place.



DETAIL II

The 1"x7"x10" Plate shall not be removed until Stage II Construction Forms and all reinforcement bars are in place and the concrete is ready to be placed.



1" x 7" x 10"

* Required only with Detail II

NOTES

- Detail I - With Bar Splicer or Couplers:
Connect one (1) 1"x7"x10" steel \bar{P} to the top layer of couplers with 2-5/8" ϕ bolts screwed to coupler at approximate \bar{C} of each barrier panel.
- Detail II - With Extended Reinforcement Bars:
Connect one (1) 1"x7"x10" steel \bar{P} to the concrete slab with 2-5/8" ϕ Expansion Anchors or cast in place inserts spaced between the top layer of reinforcement at approximate \bar{C} of each barrier panel.
Cost of anchorage is included with Temporary Concrete Barrier.

ILLINOIS ROUTE 92 OVER AN UNNAMED DITCH

REVISIONS			STATE OF ILLINOIS DEPARTMENT OF TRANSPORTATION DIVISION OF HIGHWAYS		DRAWN BY DATE R King 2/05
1					CHECKED BY DATE BWP 2/05
2					DESIGNED BY DATE CWC 2/05
3					BOOK NUMBER
4					PROJECT NO. 4858-4
5					SHEET NO.
6					
7					
8					
9					
10					
11					
12					