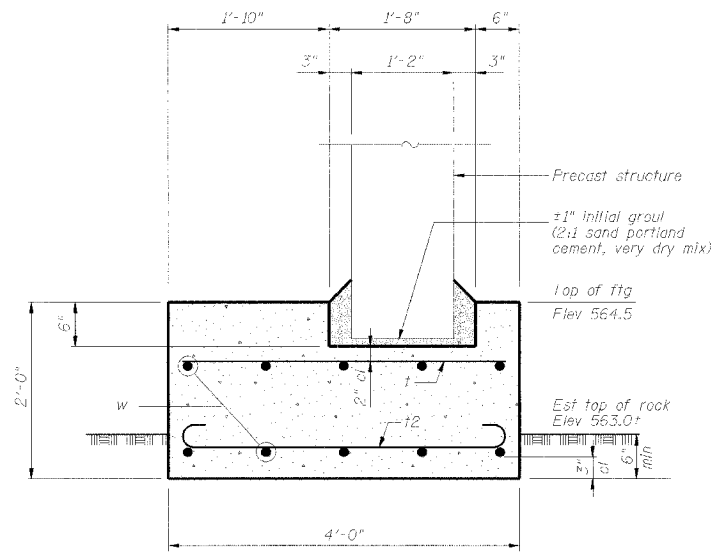


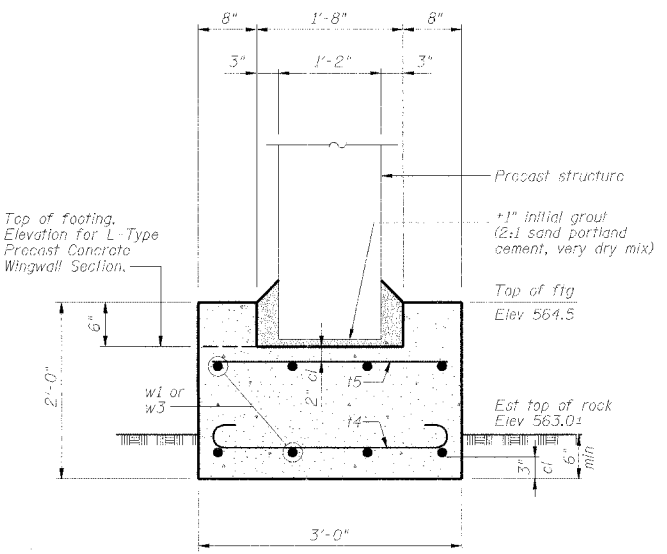
STATE OF ILLINOIS
DEPARTMENT OF TRANSPORTATION

Sheet No. 5
of 7 Sheets

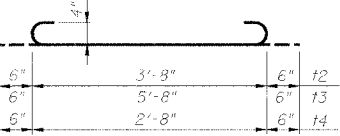
ROUTE NO.	SECTION	COUNTY	TOTAL SHEETS	SHEET NO.
FAP 599	*	ROCK ISLAND	90	39
FED. ROAD DIST. NO.	ILLINOIS	PROJECT		
*42 MFT-BR		CONTRACT NO. 64641		



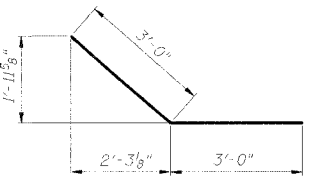
SECTION A-A



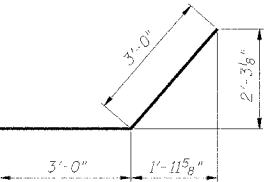
SECTION B-B



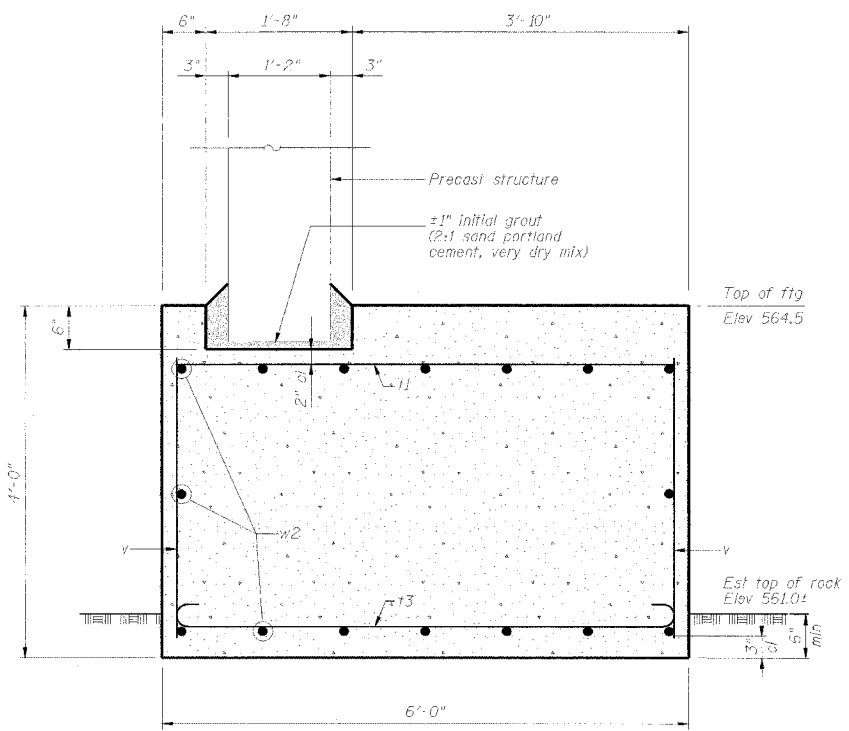
BARS t2, t3 & t4



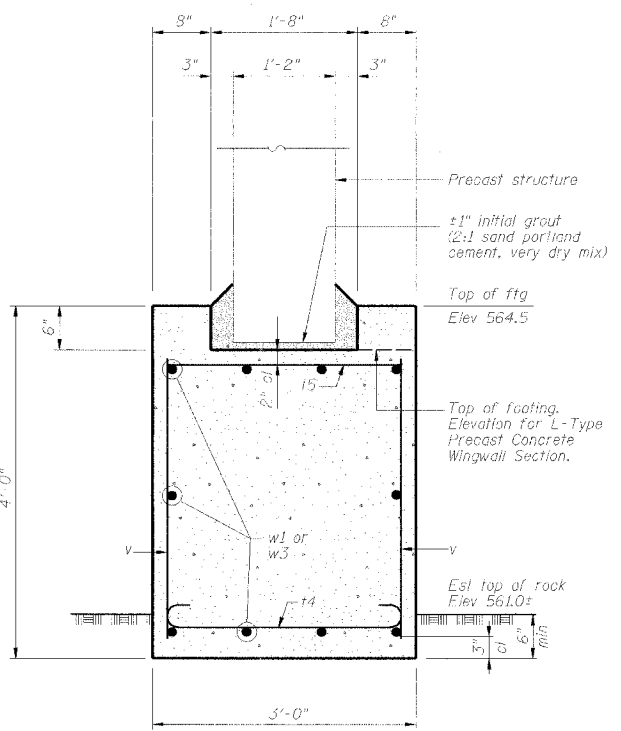
BAR w4



BAR w5



SECTION C-C



SECTION D-D

BILL OF MATERIAL

Bar	No.	Size	Length	Shape
t	129	#4	3'-8"	—
t1	129	#4	5'-8"	—
t2	129	#4	4'-8"	—
t3	129	#4	6'-8"	—
t4	76	#4	3'-8"	—
t5	76	#4	2'-8"	—
v	164	#4	3'-7"	—
w	30	#5	30'-0"	—
w1	18	#5	12'-9"	—
w2	48	#5	31'-1"	—
w3	18	#5	11'-6"	—
w4	18	#5	6'-0"	—
w5	18	#5	6'-0"	—
Concrete Structures		Cu. Yd.	110.4	
Reinforcement Bars		Pound	5670	
Rock Excavation for Structures		Cu. Yd.	18.4	

ILLINOIS ROUTE 92 OVER AN UNNAMED DITCH

FOUNDATION DETAILS

REVISIONS	STATE OF ILLINOIS DEPARTMENT OF TRANSPORTATION DIVISION OF HIGHWAYS	DRAWN BY DATE R King 2/05 CREATED BY DATE DWP 2/05 CHECKED BY DATE CWC 2/05 BOOK NUMBER
	FAP ROUTE 599 SECTION 42 MFT-BR SN 081-1009	
	STA 408+41.00 ROCK ISLAND COUNTY	PROJECT No. 4858-4
	HOMER I. CHASTAIN & ASSOCIATES, LLP CONSULTING ENGINEERS 184-001397	SHEET No.