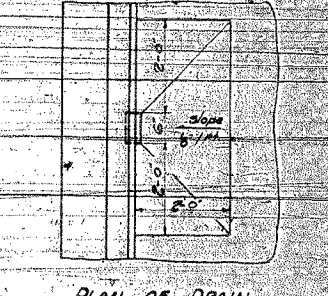
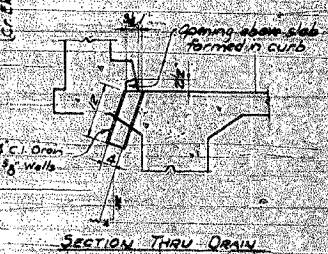
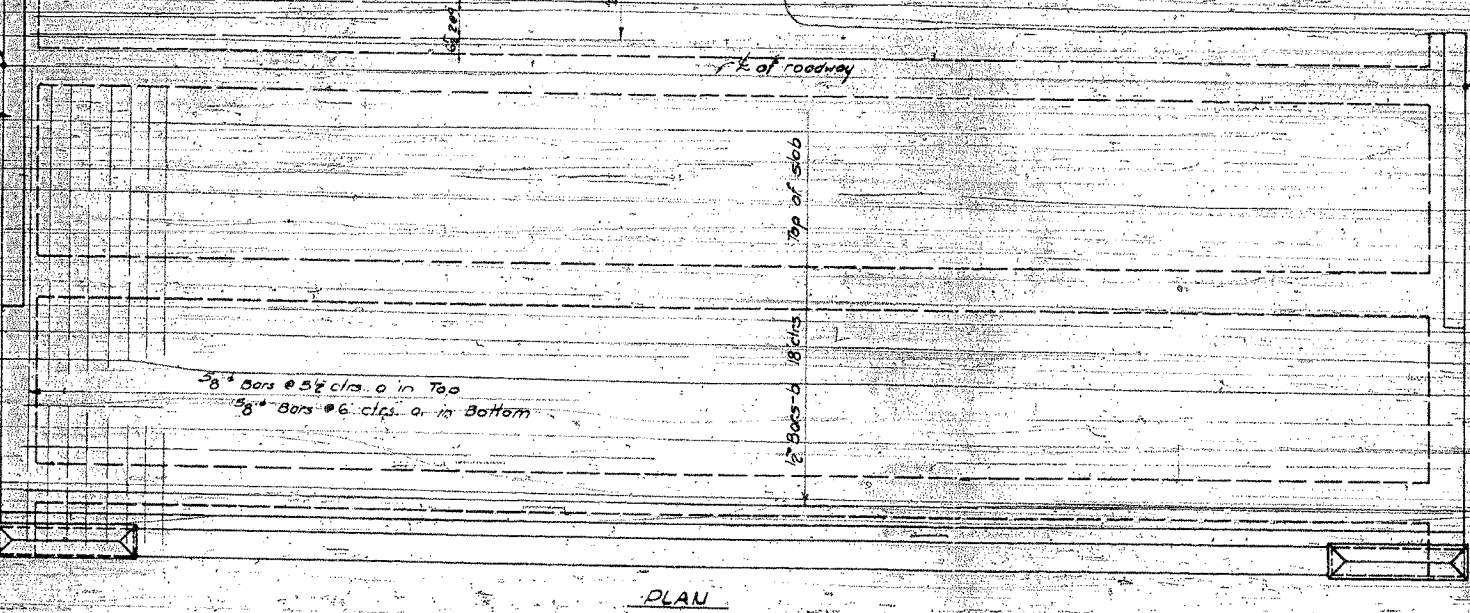
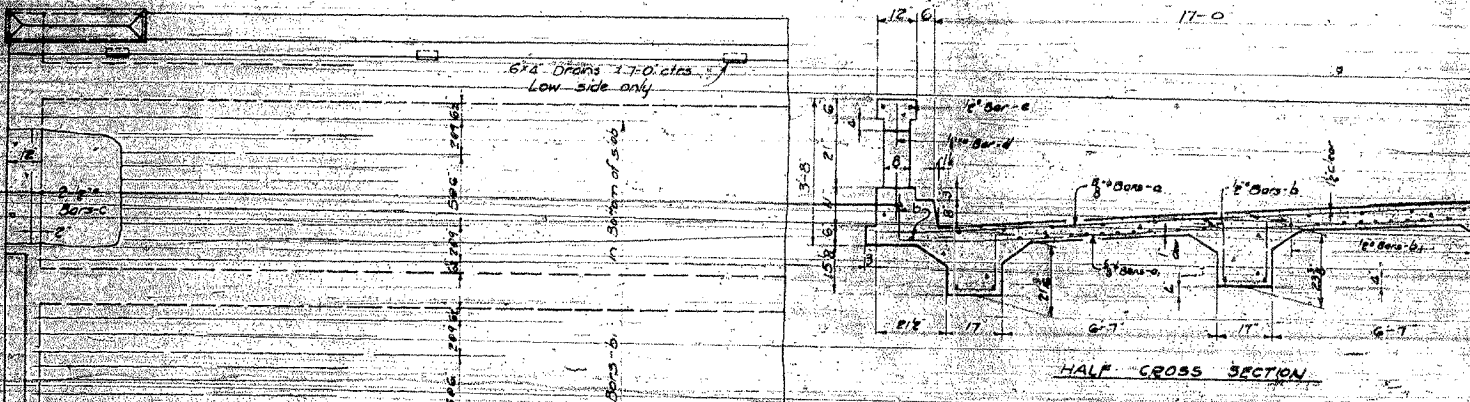
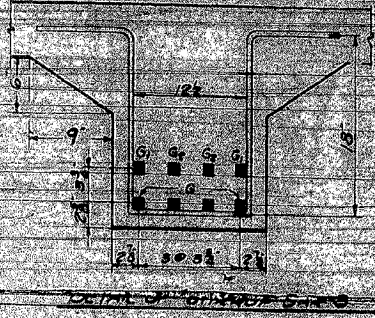
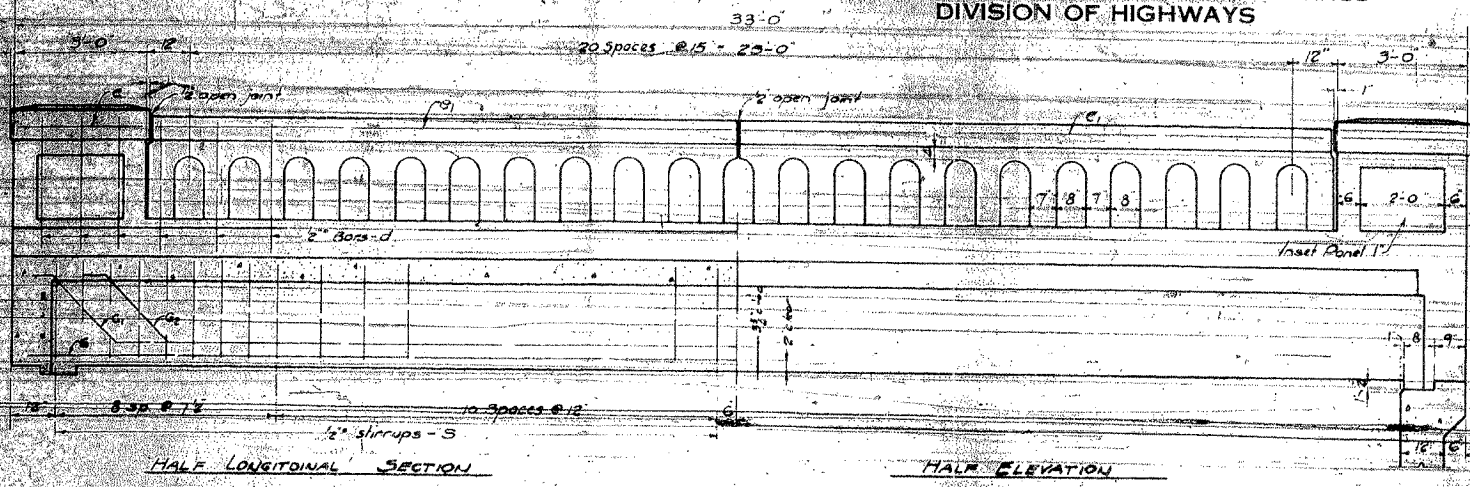


STATE OF ILLINOIS  
DEPARTMENT OF PUBLIC WORKS & BUILDINGS  
DIVISION OF HIGHWAYS

FAP NO.	SECTION	COUNTY	TOTAL SHEETS	SHEET NO.
599	42MFT-BR & 42MFT-T	ROCK ISLAND	90	46
STA.	TO STA.		SHEET NO.	
			2 SHEETS	

EXISTING CONDITIONS:  
**CONTRACT 64641**  
**FOR INFORMATION ONLY**



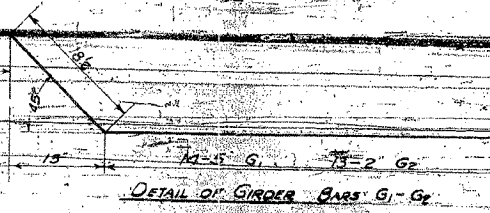
**BILL OF MATERIAL**

BAR NO.	SIZE	LENGTH
1, a	70	19'-3"
a	64	20'-0"
b	40	16'-9"
b <sub>1</sub>	60	16'-9"
c	8	18'-0"
d	36	3'-0"
e	8	3'-0"
e <sub>1</sub>	8	3'-0"
g	20	32'-6"
g <sub>1</sub>	10	32'-9"
g <sub>2</sub>	10	32'-3"
g <sub>3</sub>	140	6'-0"

Class X Concrete - CU 45 43.7  
Handrail Concrete - QU 165 3.6  
Reinforcing Steel - Lbs 12600  
Floor Drains - Each 6  
Drain Plate - Each 1

Use class X concrete throughout.  
Concrete above top of rail base designated as Handrail Concrete.  
Aggregate which is to be used in handrail must be absolutely free of chert, flint, lignite, ironite and soft sandstone.  
Reinforcement bars shall be placed and fastened according to Art. 45-3 of Ill. Spec. Const. Code. Bars shall be given a minimum lap according to Art. 45-3(b) Ill. Specifications.

COMPUTER	DRP	EXAMINED	19-3-6
CHECKED		PASSED	
DRAWN	DRP	APPROVED	
CHECKED			
SPECIAL	ASSEMBLED	APPROVED	
CHECKED			



S.A. ROUTE 9 - SEC 42-B M.F.T.  
ROCK ISLAND COUNTY  
STA 408+95