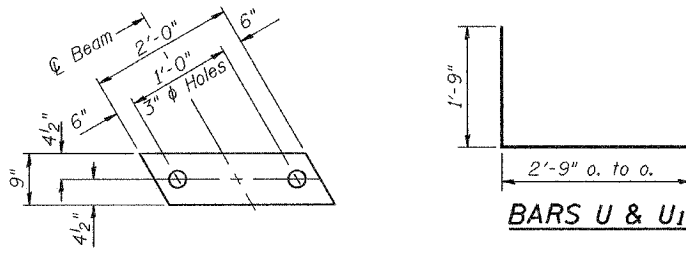
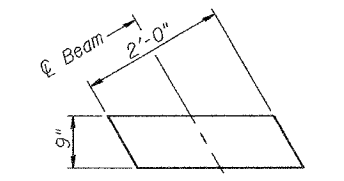


STATE OF ILLINOIS
DEPARTMENT OF TRANSPORTATION

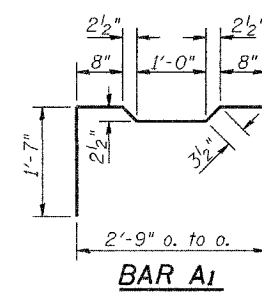
| | | | | | |
|-----------------------|---------|-------------|------------------|-------|-------------------------|
| ROUTE NO. | SECTION | COUNTY | DATE | SHEET | SHEET NO. 3 5 SHEETS |
| | | Rock Island | 90 | 52 | |
| FED. ROAD DIST. NO. 7 | | ILLINOIS | FED. AID PROJECT | | Contract Number: 64641 |



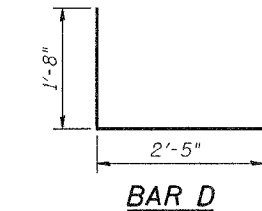
BARS U & U1



FABRIC BEARING PAD (Interior) EXPANSION

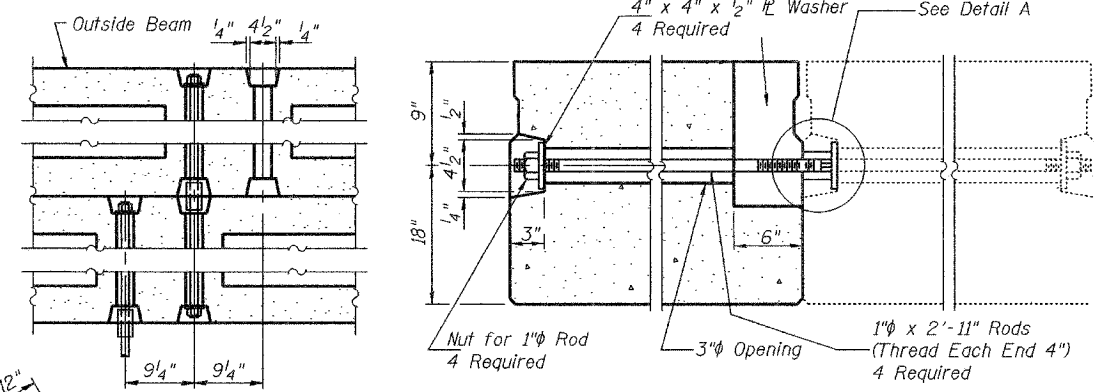


BAR A1

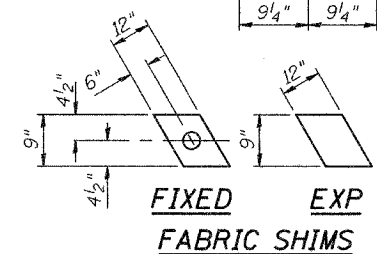


BAR D

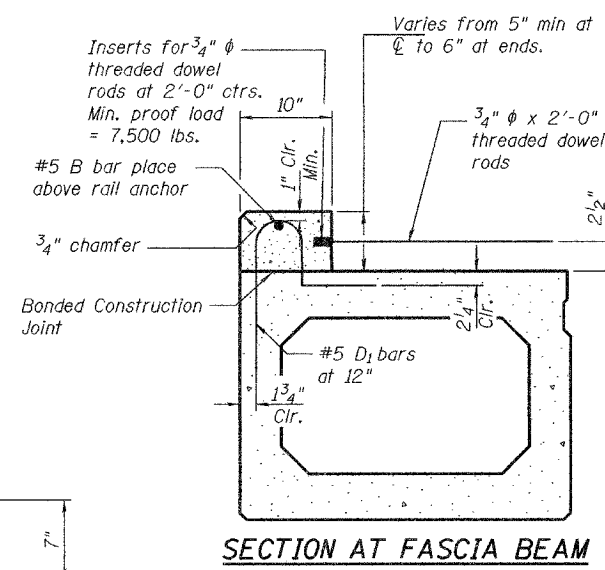
6" x 6" x 11 1/2" Blockout to be filled with Class BD Concrete after Beams have been installed. Cost shall be included in the cost of "Concrete Wearing Surface, 5". Omit on the outside of Fascia Beams.



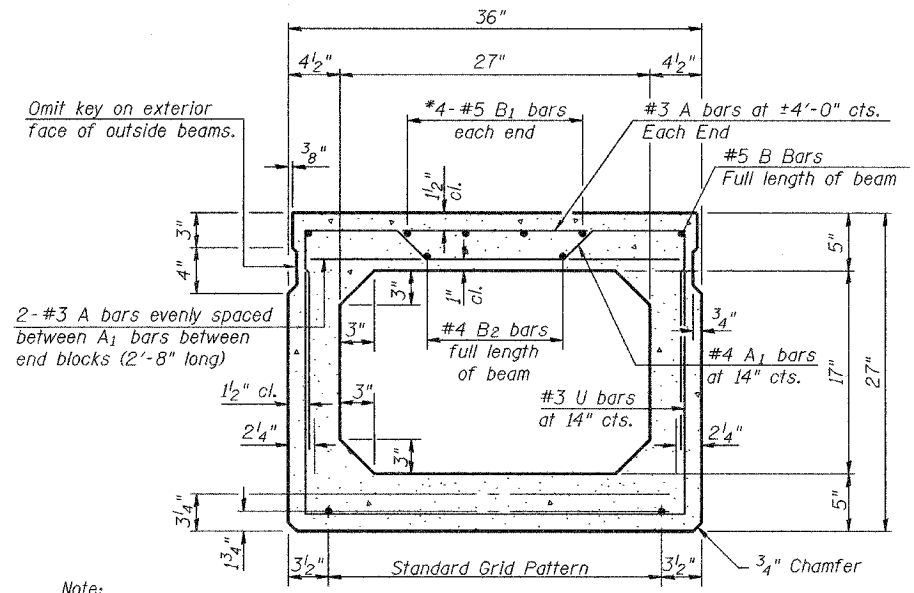
TYPICAL TRANSVERSE TIE ASSEMBLY



FIXED EXP FABRIC SHIMS



SECTION AT FASCIA BEAM (Showing Curb and Curb Reinforcement)



TYPICAL SECTION (Curb not shown)

Note: Place strands symmetrically about center of beam.

1/2" phi Strands, Each Strand Stressed to 30,900 Lbs.
9-Strands 1 3/4" up, 2-Strands 3/4" up

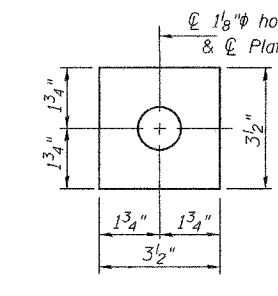
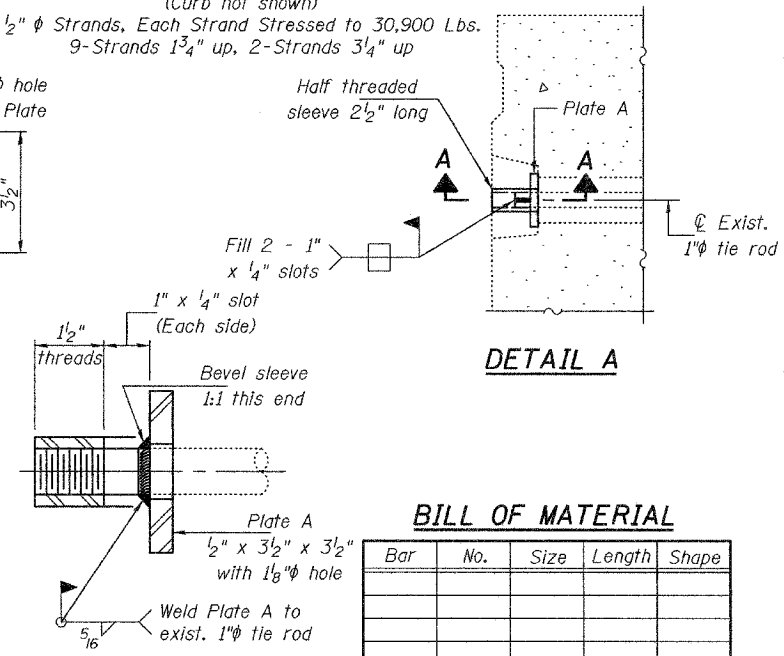


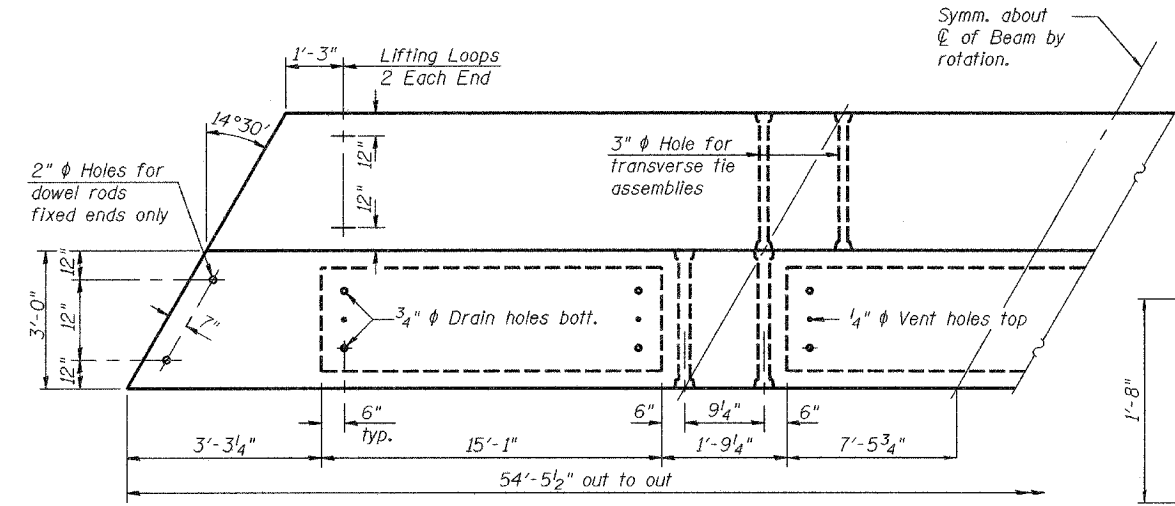
PLATE A (4 Required)



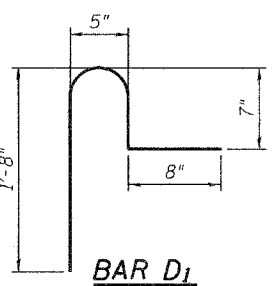
DETAIL A

BILL OF MATERIAL

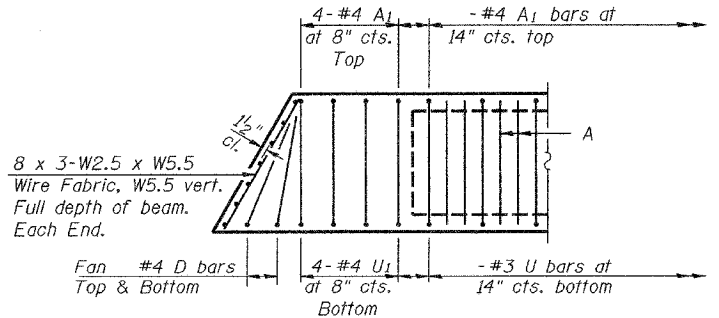
| Bar | No. | Size | Length | Shape |
|-------------------------------|-----|------|---------|-------|
| P.P.C. Deck Beams (27" Depth) | | | Sq. Ft. | 327 |



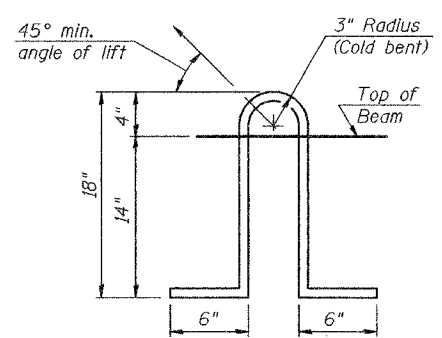
PLAN



BAR D1



END PLAN



LIFTING LOOP DETAIL

See typical section for strand pattern, dimensions and bar call outs. Bridge rail inserts shall be cast in precast beams and curbs. Curbs shall be cast by the precast prestressed concrete supplier after strands have been released and prior to shipping the beam. The concrete in the curb shall be the same as specified for the deck beams. The curb inserts and threaded dowel rods may be either epoxy coated or galvanized and the cost shall be included with PPC Deck Beams (27" Depth).

NOTES

Prestressing steel shall be uncoated high strength, low relaxation 7-wire strand, Grade 270. The nominal diameter shall be 1/2" and the nominal cross-sectional area shall be 0.153 sq. in. Lifting loops shall be 2-1/2" phi-270 ksi strands, as shown. The 1" phi rods in the transverse tie assembly shall be tightened to a snug fit and the threads set. Pockets that receive transverse tie bar on outside shall be filled with grout after transverse tie assembly is in place. Non prestressing steel shall conform to AASHTO M-31 or M-322 Grade 60. The bearing seat surfaces shall be adjusted by shimming to assure firm and even bearing. Two 1/8" fabric adjusting shims of the dimensions shown shall be provided for each bearing. Keyway surfaces shall be cleaned to remove form oil or other bond breaking material prior to shipment of the beams. Cleaning shall be done by sandblasting the keyway areas between top of the beam and the bottom edge of the key. Corrosion inhibitor, as covered in the Special Provisions, shall be used in the concrete for precast prestressed concrete deck beams. Required Release Strength, f'ci, shall be 4000 p.s.i.

SECTION A-A (4 Required)

| | |
|----------|------------------|
| DESIGNED | V.H.V. |
| CHECKED | M.J.T. |
| DRAWN | Drew Christopher |
| CHECKED | V.H.V. M.J.T. |

| | |
|----------------|------------------------------------|
| EXAMINED | September 23, 2005 |
| John A. Morris | ENGINEER OF STRUCTURAL SERVICES |
| PASSED | Ralph E. Anderson |
| | ENGINEER OF BRIDGES AND STRUCTURES |

PD-5-L 10-22-04

BEAM DETAILS
IL 92
ROCK ISLAND COUNTY
SN 081-0076