

STATE OF ILLINOIS  
DEPARTMENT OF TRANSPORTATION

ROUTE NO.	SECTION	COUNTY	SHEETS	SHEET NO.	SHEET NO. 2
S. B. I.	*	Henry	26	17	2 SHEETS
F. A. P.					
FED. ROAD DIST. NO. 7	ILLINOIS	FED. AID PROJECT			

\* Section 2BR-1 Contract #64B10

**GENERAL NOTES**

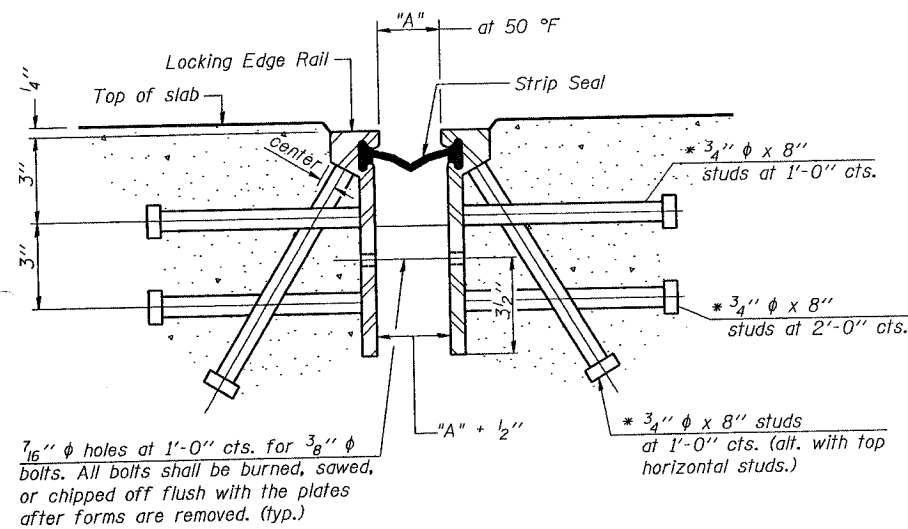
The strip seal shall be made continuous and shall have a minimum thickness of 1/4". The configuration of the strip seal shall match the configuration of the Locking Edge Rails.

The height and thickness of the Locking Edge Rails shown are minimum dimensions. The actual configuration of the Locking Edge Rails and matching strip seal may vary from manufacturer to manufacturer. Flanged edge rails will not be allowed.

Locking Edge Rails may be spliced at slope discontinuities and stage construction joints.

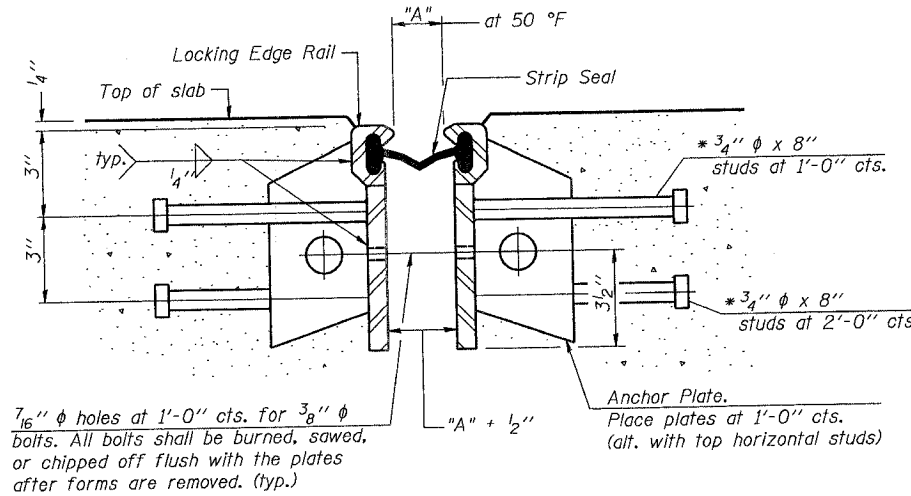
The manufacturer's recommended installation methods shall be followed.

The joint opening and deck dimensions detailed on the superstructure are based on a preformed joint seal. If the contractor elects to use the alternate strip seal joint, the opening and deck dimensions shall be modified according to the dimensions detailed on this sheet. Required modifications shall be made at no additional cost to the State.

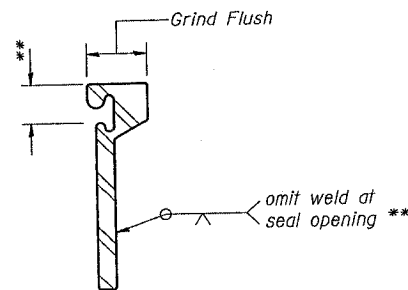


**SECTION THRU ROLLED RAIL EXP. JOINT**  
(180 Studs Required Per Joint)

\* Granular or solid flux filled headed studs conforming to Article 1006.32 of the Std. Specs., automatically end welded.

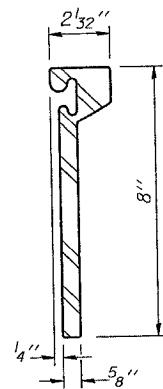


**SECTION THRU WELDED RAIL EXP. JOINT**  
(110 Studs Required per Joint)  
(74 Anchor Plates Required Per Joint)

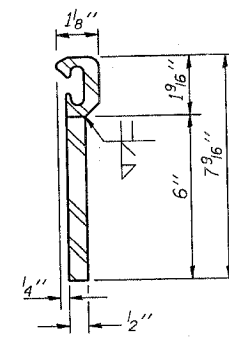


**LOCKING EDGE RAIL SPLICE**

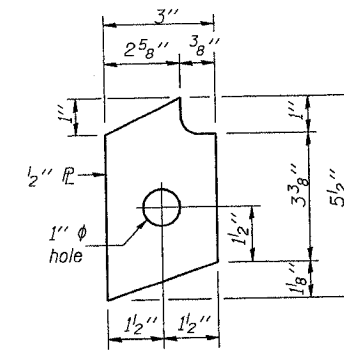
The inside of the locking edge rail groove shall be free of weld residue.



**ROLLED (EXTRUDED) RAIL**



**WELDED RAIL**



**ANCHOR PLATE**  
(for welded rail)

**LOCKING EDGE RAILS**

DESIGNED	SB
CHECKED	RB
DRAWN	DB, BS
CHECKED	SB

BRIDGE JOINT SYSTEM - EXPANSION  
(ALTERNATE-STRIP SEAL)

F.A.U. 5862 (POPPY GARDEN RD)  
OVER GREEN RIVER  
SECTION 2BR-1  
HENRY COUNTY  
STR. NO. 037-0127