

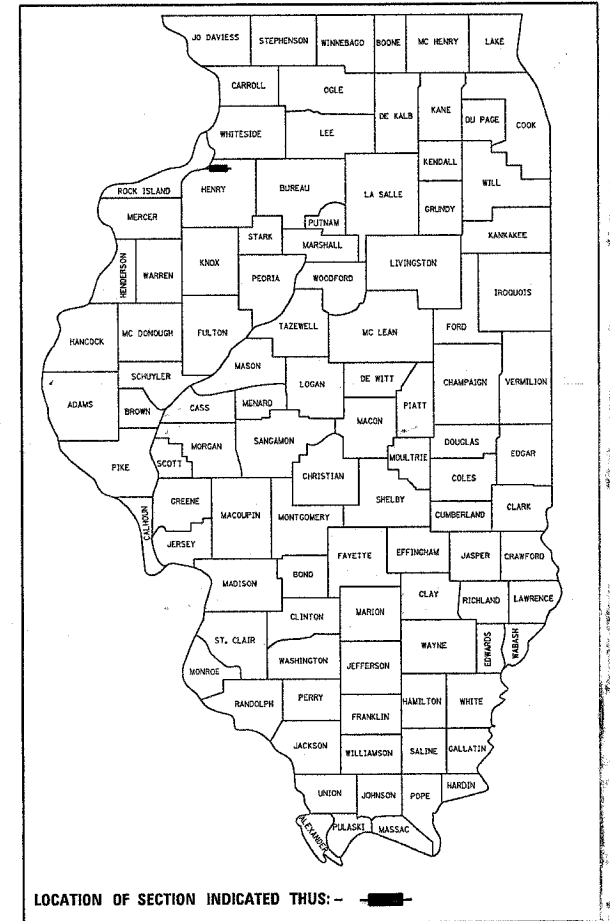
F.A.U. R.T.E.	SECTION	COUNTY	TOTAL SHEETS	SHEET NO.
5862	2BR-1	HENRY	26	1

STATE OF ILLINOIS
DEPARTMENT OF TRANSPORTATION
DIVISION OF HIGHWAYS

PROPOSED HIGHWAY PLANS

FAU ROUTE 5862 (POPPY GARDEN RD)
SECTION 2BR-1
PROJECT ACBHM-5862 (001)
HENRY COUNTY
C-92-014-06

D92-072-05



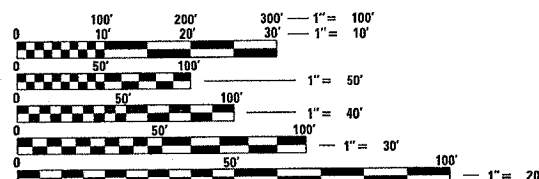
LOCATION OF SECTION INDICATED THUS: - [thick black line] -

INDEX OF SHEETS

- 1 COVER SHEET
- 2-3 SUMMARY OF QUANTITIES
- 4 GENERAL NOTES
- 5 TYPICAL SECTIONS & BUTT-JOINT DETAILS
- 6-7 SCHEDULE OF QUANTITIES
- 8 ROADWAY PLAN SHEETS
- 9 EROSION DETAILS
- 10-11 BRIDGE GENERAL PLAN AND ELEVATION
- 12-13 SUPERSTRUCTURE DETAILS
- 14 ABUTMENT DETAIL
- 15 TYPE SM, STEEL BRIDGE RAIL SIDE MOUNTED
- 16-17 BRIDGE JOINT SYSTEM EXPANSION DETAILS
- 18 DELINEATOR AND POST (37.4)
- 18 WITNESS MARKER FOR PERMANENT SURVEY MARKERS TYPE II (38.4)
- 19 TRAFFIC CONTROL FOR ROAD CLOSURE (40.1)
- 20-21 TYPICAL PAVEMENT MARKINGS (41.1)
- 22-26 CROSS SECTIONS

STATE STANDARDS

- 001001 AREAS OF REINFORCEMENT
- 001006 DECIMAL OF AN INCH AND A FOOT
- 280001-02 TEMPORARY EROSION CONTROL SYSTEMS
- 515001-02 NAME PLATE FOR BRIDGES
- 630001-05 STEEL PLATE BEAM GUARDRAIL
- 630301-03 SHOULDER WIDENING FOR TYPE 1 GUARDRAIL TERMINALS
- 631032-01 TRAFFIC BARRIER TERMINAL, TYPE 6A
- 635001 DELINEATORS
- 635006-02 REFLECTOR AND TERMINAL REPLACEMENT
- 635011-01 REFLECTOR MARKER AND MOUNTING DETAILS
- 667101 PERMANENT SURVEY MARKERS
- 701301-02 TRAFFIC CONTROL
- 702001-05 TRAFFIC CONTROL DEVICES
- 720011 METAL POST
- 780001-01 TYPICAL PAVEMENT MARKINGS

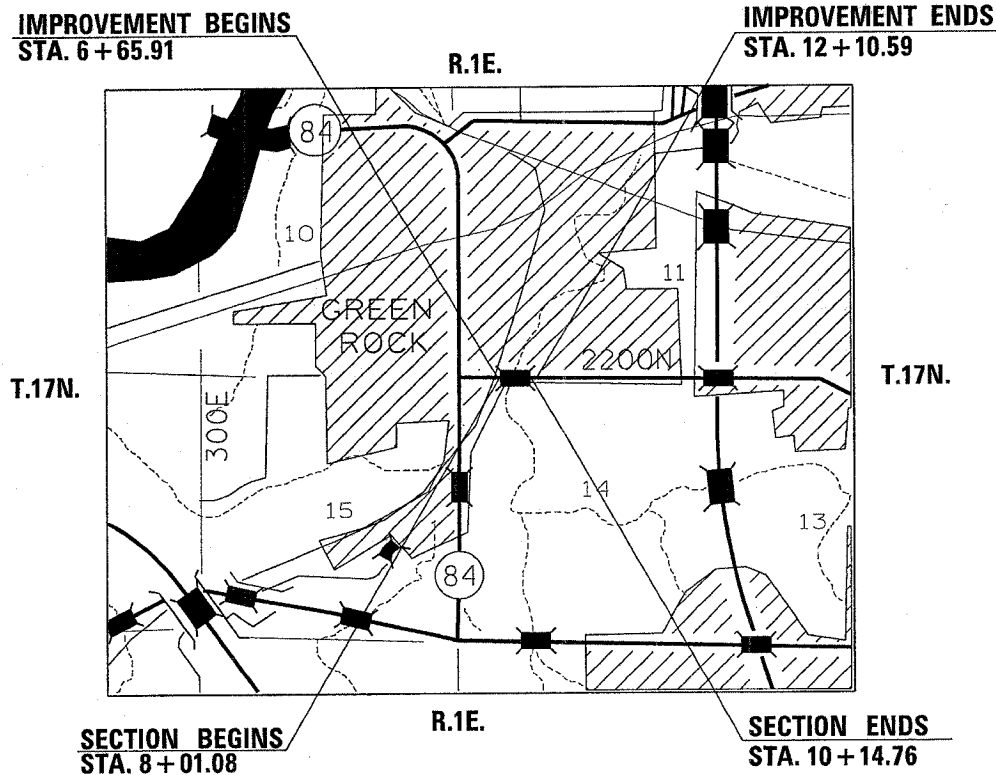


FULL SIZE PLANS HAVE BEEN PREPARED USING STANDARD ENGINEERING SCALES. REDUCED SIZED PLANS WILL NOT CONFORM TO STANDARD SCALES. IN MAKING MEASUREMENTS ON REDUCED PLANS, THE ABOVE SCALES MAY BE USED.

J.U.L.I.E.
JOINT UTILITY LOCATION INFORMATION FOR EXCAVATION
1-800-892-0123

COLONA TOWNSHIP SECTION - 11,14

CONTRACT NO. 64B10



NET LENGTH OF PROJECT = 213.68 LIN. FT = 0.041 MILES
GROSS LENGTH OF PROJECT = 213.68 LIN. FT = 0.041 MILES

PROJECT ENGINEER: ROBERT WAGNER

SENIOR ENGINEER: THOMAS HALLA

PHONE: (815) 284-5993

STATE OF ILLINOIS
DEPARTMENT OF TRANSPORTATION
DIVISION OF HIGHWAYS

SUBMITTED September 6, 2005
Gregory Z. Mankin
DEPUTY DIRECTOR OF HIGHWAYS, REGION ENGINEER

October 14, 2005
Mike Stone
ENGINEER OF DESIGN AND ENVIRONMENT

October 14, 2005
Eric E. Kern
DEPUTY DIRECTOR OF HIGHWAYS, CHIEF ENGINEER

PRINTED BY THE AUTHORITY
OF THE STATE OF ILLINOIS

F.A. L. RYE	SECTION	COUNTY	TOTAL SHEETS	SHEET NO.
5862	2BR-1	HENRY	26	3
STA.		TO STA.		
FED. ROAD DIST. NO.		ILLINOIS	FED. AID PROJECT	

SUMMARY OF QUANTITIES

URBAN
X080-2A
80 % FED
20 % STATE

CODE NUMBER		UNIT	TOTAL QUANTITY
* 63100167	TRAFFIC BARRIER TERMINAL TYPE 1, SPECIAL (TANGENT)	EACH	1
* 63100169	TRAFFIC BARRIER TERMINAL TYPE 1, SPECIAL (FLARED)	EACH	3
63200310	GUARDRAIL REMOVAL	FOOT	325
63500105	DELINEATORS	EACH	4
66700305	PERMANENT SURVEY MARKERS, TYPE II	EACH	2
67000400	ENGINEER'S FIELD OFFICE, TYPE A	CAL MO	3
67100100	MOBILIZATION	L SUM	1
* 78001110	PAINT PAVEMENT MARKING - LINE 4"	FOOT	3344
78200410	GUARDRAIL MARKERS, TYPE A	EACH	19
78201000	TERMINAL MARKER - DIRECT APPLIED	EACH	4
X0323557	BRIDGE JOINT SYSTEM EXPANSION 1"	FOOT	99
X4066414	BITUMINOUS CONCRETE SURFACE COARSE, SUPERPAVE, MIC "C", N50	TON	70
X7013015	TRAFFIC CONTROL FOR ROAD CLOSURE	L SUM	1

* SPECIALTY ITEMS

PLOT DATE = Fri Sep 02 14:59:58 2005
PLOT SCALE = 50.0000 / IN.
USER NAME = meg111

REVISIONS		ILLINOIS DEPARTMENT OF TRANSPORTATION
NAME	DATE	
		SCALE: VERT. HORIZ. DATE
DRAWN BY		CHECKED BY

GENERAL NOTES

ROUTE NO.	SEC.	COUNTY	TOTAL SHEETS	SHEET NO.
FAU 5862 (Poppy Garden Road)	2BR-1	Henry	26	4
FED ROAD DIST. NO.	ILLINOIS	PROJECT		
Contract #64B10				

The final top 100 mm (four inches) of soil in any right-of-way area disturbed by the Contractor must be capable of supporting vegetation. The soil must be from the A horizon (zero to 2' deep) of soil profiles of local soils.

The Contractor shall seed all disturbed areas within the project limits. Seeding Class 6 (modified) shall be used, except in front of properties where the grass will be mowed, then use Seeding, Class 1 (modified). Class 6 (modified) shall be used on front slopes and ditch bottoms. This work will be included in the contract unit price per Cubic Meter (Cubic Yard) for EARTH EXCAVATION.

Fertilizer shall be applied to all disturbed areas and incorporated into the seedbed prior to seeding or placement of sod at the rate specified in Sections 250 and 252 of the Standard Specifications. This work shall be included in the cost of EARTH EXCAVATION.

Mulch Method II shall be applied over all seeded areas. This shall be included in the cost of the EARTH EXCAVATION.

The following Mixture Requirements are applicable for this project:

Mixture Uses(s):	Mainline Surface Course
PG:	PG 64-22
RAP%: (Max)	10%
Design Air Voids	4.2 @ N50
Mixture Composition (Gradation Mixture)	IL 9.5 or 12.5
Friction Aggregate	C
20 Year ESAL	4.3

This structure will retain the same number 037-0127.

Embankment quantities for the construction of the Traffic Barrier Terminals as shown in the plans are included in quantities for EARTH EXCAVATION.

The Contractor shall supply the Resident Engineer with the manufacturer's installation requirements for the type of Steel Plate Beam Guardrail Terminal Type 1 Special (Tangent) or Steel Plate Beam Guardrail Terminal Type I Special (Flared).

Bituminous Prime Coat shall be placed in accordance with Section 406 of the Standard Specifications. The cost of the Bituminous Prime Coat shall be included in the contract unit price per TON for SURFACE COURSE, TYPE I, N50.

One 16d galvanized nail shall be used to toe nail the wood block out to the wood post on all Traffic Barrier Terminal Type I Specials.

Delineators shall be installed as shown in Standard 635001, except that the post shall be rotated 180° and only metal-backed delineators shall be permitted.

Delineators shall be placed at the ends of approach guardrail terminal sections, and at each headwall or end section of AR Culverts. This work will be paid for at the contract unit price each for DELINEATORS.

Pavement marking shall be done according to Standard 780001, except as follows:

1. All words, such as ONLY, shall be 2.4 m (8 feet) high.
2. All non-freeway arrows shall be the large size.
3. The distance between yellow no-passing lines shall be 200 mm (8"), not 180 mm (7") as shown in the detail of Typical Lane and Edge Lines.

Permanent survey markers, Type II shall be cast-in-place as shown on Highway Standard 667101. A marker shall be placed near each end of the structure in such a location that will take into account satellite and future construction. Location shall be determined by the Engineer.

The Contractor shall submit to the Engineer a description of location, elevation, and coordinates for each permanent survey marker. The Engineer shall submit this information to the Survey Crew.

The following quantities have been estimated for the Good Neighbor Policy as needed:
 X4066414 Bituminous Surface Course, Superpave, Mix "C", N50 - 50 tons
 48101200 Aggregate Shoulder, Type B - 80 ton

Henry County Engineer and Colona City Engineer shall be informed 1 week prior to the construction beginning. Above listed shall be invited to the pre-construction meeting.

The Contractor shall be responsible for protecting utility property during construction operations as outlined in Article 107.31 of the Standard Specifications. A minimum of 48 hours advance notice is required for non-emergency work. The JULIE number is 800-892-0123. The following listed utilities located within the project limits or immediately adjacent to the project construction limits are members of JULIE:

Mediacom
 Alliant Energy
 Dome Pipeline Corp.

Commonwealth Edison
 Citizen's Telephone

Following are the known utilities located within the project limits or immediately adjacent to the project construction limits which are not members of JULIE and should be notified individually by the contractor:

Mr. Dennis Schultz
 IDOT
 819 Depot Ave.
 Dixon, IL 61021

Due to environmental concerns, the following shall be strictly adhered to:

1. All work shall be performed from the existing decks and no work shall take place below the existing structure on the ground.
2. No fill shall be placed in or around Green River.

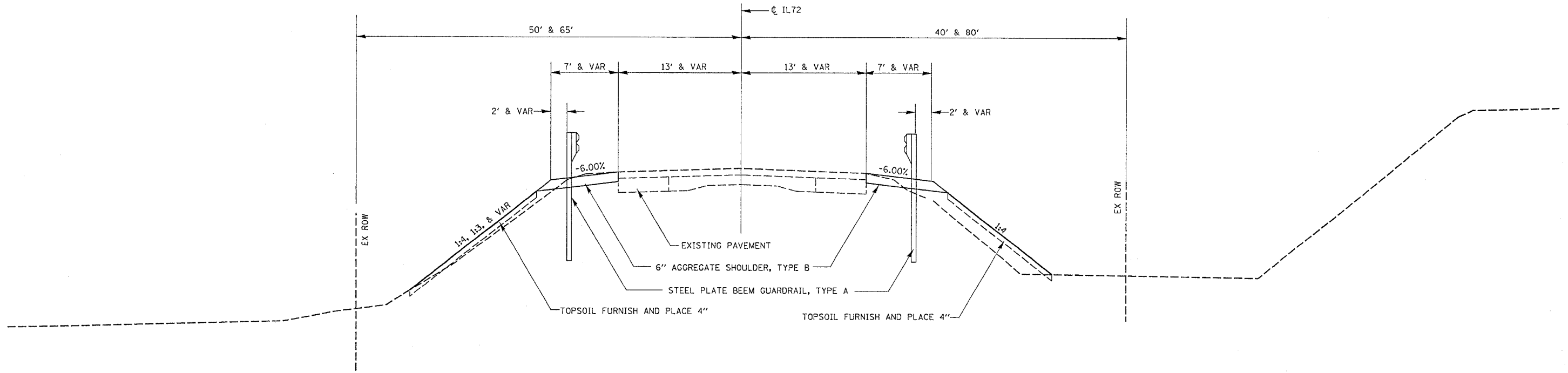
The Contractor shall take care not to damage existing bituminous shoulder during the guardrail installation. Holes shall be cored for guardrail posts and backfilled with bituminous mixture in accordance with Article 630.06 of the Standard Specifications.

The Resident Engineer, prior to closing the road and after the project is finished, shall contact the corresponding Township and the Henry County Engineer to videotape the following roads: Green River Road from the intersection of IL 6 and Green River Road to Poppy Garden Road and Poppy Garden Road from Green River Road to First Street.

Program #5
 (Arch. Size)
 Enlarge
 200%
 Enlarge 107%

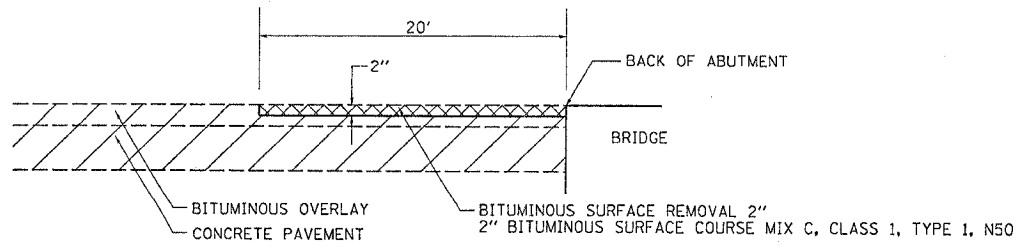
F.A.U. RTE.	SECTION	COUNTY	TOTAL SHEETS	SHEET NO.
5862	2BR-1	HENRY	26	5
STA.		TO STA.		
FED. ROAD DIST. NO.		ILLINOIS FED. AID PROJECT		

TYPICAL SECTIONS



BUTT JOINT

BITUMINOUS SURFACE REMOVAL - 2"
 STA 7+80.87 TO STA 8+00.87 & STA 10+14.91 TO STA 10+34.91



REVISIONS		ILLINOIS DEPARTMENT OF TRANSPORTATION
NAME	DATE	
SCALE: VERT.		DRAWN BY
HORIZ.		
DATE		CHECKED BY

TYPICAL SECTIONS & BUTT JOINT DETAIL

PLOT DATE = Fri Sep 02 14:41:49 2005
 PLOT SCALE = 1/8" = 10'-0"
 USER NAME = mgj111

F.A.U. RTE.	SECTION	COUNTY	TOTAL SHEETS	SHEET NO.
5862	2BR-1	HENRY	26	7
STA.		TO STA.		
FED. ROAD DIST. NO.	ILLINOIS	FED. AID PROJECT		

SCHEDULE OF QUANTITIES

POPPY GARDEN

63200310

GUARDRAIL REMOVAL

FOOT	LOCATION				
90	7+ 13.85	-	8+ 3.16	LT	
53	7+ 56.97	-	8+ 2.95	RT	
91	10+ 11.95	-	11+ 2.12	LT	
91	10+ 12.08	-	11+ 2.18	RT	
325	TOTAL				

63500105

DELINEATORS

EACH	LOCATION				
1	6+ 81.88	LT			
1	7+ 19.67	RT			
1	11+ 46.32	RT			
1	11+ 96.54	LT			
4	TOTAL				

78001110

PAINT PAVEMENT MARKING LINE 4"

FOOT	LOCATION				
260	6+ 81.88 - 11+ 96.54				YELLOW SKIP DASH - 2 COATS
1028	6+ 81.88 - 11+ 96.54				YELLOW CENTER LINE - 2 COATS
1028	6+ 81.88 - 11+ 96.54	LT			WHITE EDGELINES - 2 COATS
1028	6+ 81.88 - 11+ 96.54	RT			WHITE EDGELINES - 2 COATS
3344	TOTAL				

78200410

GUARDRAIL MARKERS, TYPE A

EACH	LOCATION				
4	6+ 81.88	-	8+ 3.4	LT	
3	7+ 19.67	-	8+ 3.45	RT	
5	10+ 12.36	-	11+ 46.32	RT	
7	10+ 11.95	-	11+ 96.54	LT	
19	TOTAL				

78201000

TERMINAL MARKER - DIRECT APPLIED

EACH	LOCATION				
1	8+ 3.4	LT			
1	8+ 3.45	RT			
1	10+ 12.36	RT			
1	10+ 11.95	LT			
4	TOTAL				

28000250

TEMPORARY EROSION CONTROL SEEDING

POUND	LOCATION				
40	6+ 65.91 - 12+ 10.59	LT & RT			
40	TOTAL				

X4066414

BITUMINOUS CONCRETE SURFACE COURSE, SUPERPAVE, MIX C, N50

TON	LOCATION				
10	7+ 81.08 - 8+ 1.08				
10	10+ 14.76 - 10+ 34.76				
50	Good neighbor policy				
70	TOTAL				

25100630

EROSION CONTROL BLANKET

SQ. YD	LOCATION				
6.9	7+ 58.37 - 8+ 0.97	RT			
114.2	6+ 65.91 - 8+ 3.39	LT			
226.1	10+ 12.41 - 12+ 10.59	LT			
422.2	10+ 12.35 - 11+ 81.32	RT			
770	TOTAL				

21101615

TOPSOIL FURNISH AND PLACE 4"

SQ. YD	LOCATION				
6.9	7+ 58.37 - 8+ 0.97	RT			
114.2	6+ 65.91 - 8+ 3.39	LT			
226.1	10+ 12.41 - 12+ 10.59	LT			
422.2	10+ 12.35 - 11+ 81.32	RT			
770	TOTAL				

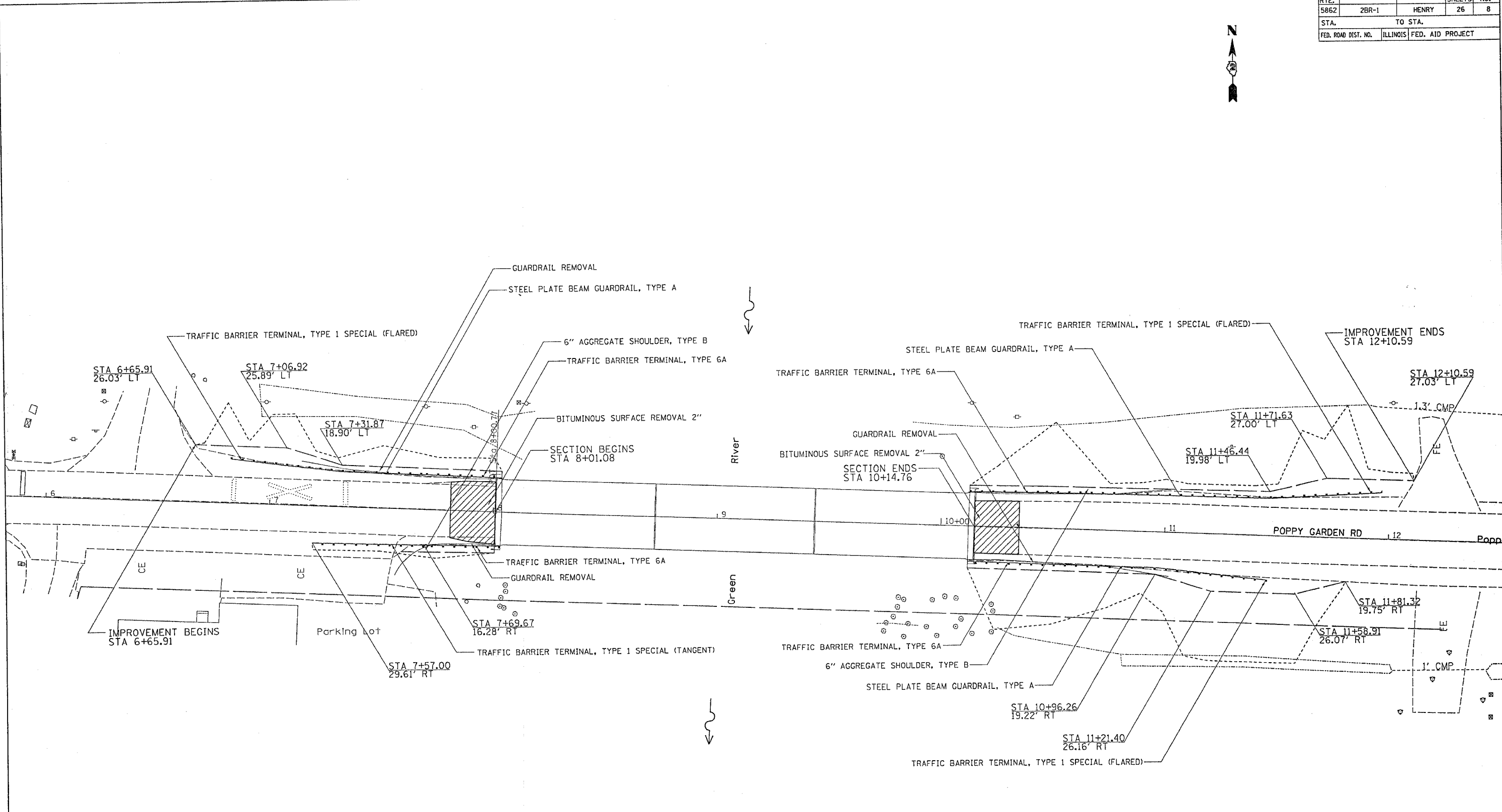
REVISIONS	
NAME	DATE

ILLINOIS DEPARTMENT OF TRANSPORTATION

SCALE: VERT. DATE HORIZ. DRAWN BY: CHECKED BY:

PLOT DATE = Fri Sep 02 14:29:49 2005
 FILE NAME = c:\p\proj\ss\207205\dr7205cov.dgn
 PLOT SCALE = 50.0000 / IN.
 USER NAME = mgj11j

F.A.U. RTE.	SECTION	COUNTY	TOTAL SHEETS	SHEET NO.
5862	2BR-1	HENRY	26	8
STA.		TO STA.		
FED. ROAD DIST. NO.		ILLINOIS FED. AID PROJECT		



PLOT DATE = Fri Sep 02 14:43:18 2005
 FILE NAME = c:\p\projects\207265\387265p1.dgn
 PLOT SCALE = 28.8000 / IN.
 USER NAME = mgj111

REVISIONS	
NAME	DATE

ILLINOIS DEPARTMENT OF TRANSPORTATION

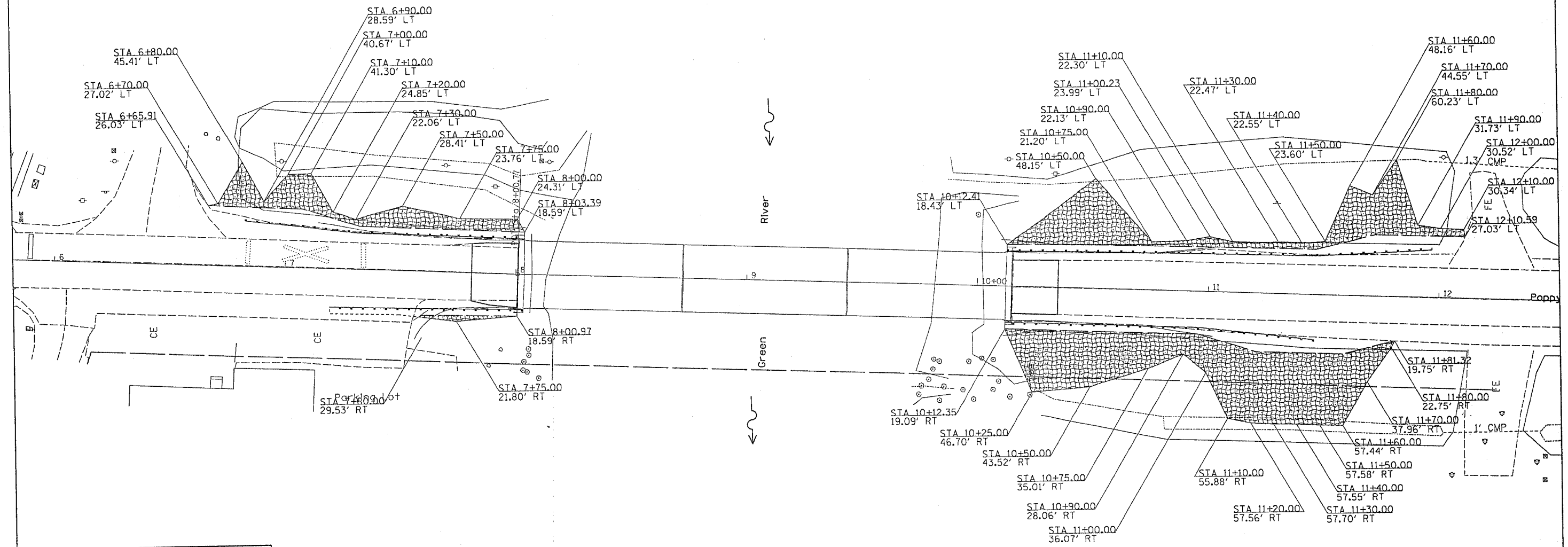
SCALE: VERT. _____
 HORIZ. _____

DATE _____

DRAWN BY _____
 CHECKED BY _____

EROSION CONTROL DETAILS

CONTRACT NO. 64B10				
F.A.U. NO.	SECTION	COUNTY	TOTAL SHEETS	SHEET NO.
5862	2BR-1	HENRY	26	9
STA.		TO STA.		
FED. ROAD DIST. NO.		ILLINOIS FED. AID PROJECT		



LEGEND	
	= SEEDING
	= EROSION CONTROL BLANKET
	= PERIMETER EROSION BARRIER

PLOT DATE = Fri, Sep 02 14:53:27 2005
 FILE NAME = c:\projects\64b10\205\07285\07285.dgn
 PLOT SCALE = 20:80000 / IN.
 USER NAME = mgj111

REVISIONS	
NAME	DATE

ILLINOIS DEPARTMENT OF TRANSPORTATION

SCALE: VERT. _____
 DATE: _____

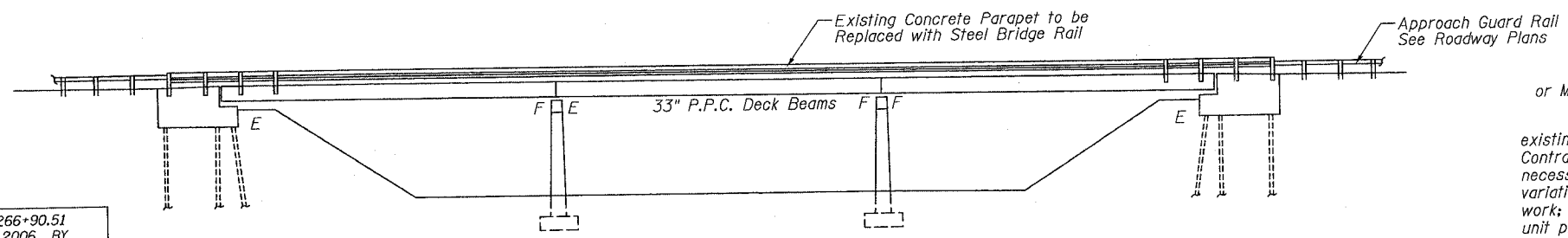
DRAWN BY _____
 CHECKED BY _____

EROSION CONTROL DETAILS

STATE OF ILLINOIS
DEPARTMENT OF TRANSPORTATION

ROUTE NO.	SECTION	COUNTY	SHEET	SHEET	SHEET NO.
	8	Henry	26	10	8 SHEETS
F.A.U. 5862		ILLINOIS			
F.A.U. 5862		ILLINOIS			

* Section 2BR-1 Contract #64B10



ELEVATION

STATION 266+90.51
RE-BUILT 2006 BY
STATE OF ILLINOIS
F.A.U. RT. 5862 SEC. 2BR-1
LOADING HS20-44
STR. NO. 037-0127

LETTERING FOR NAME PLATE
SEE STD. 515001

GENERAL NOTES

Reinforcement bars shall conform to the requirements of AASHTO M-31, or M-322, Grade 60.

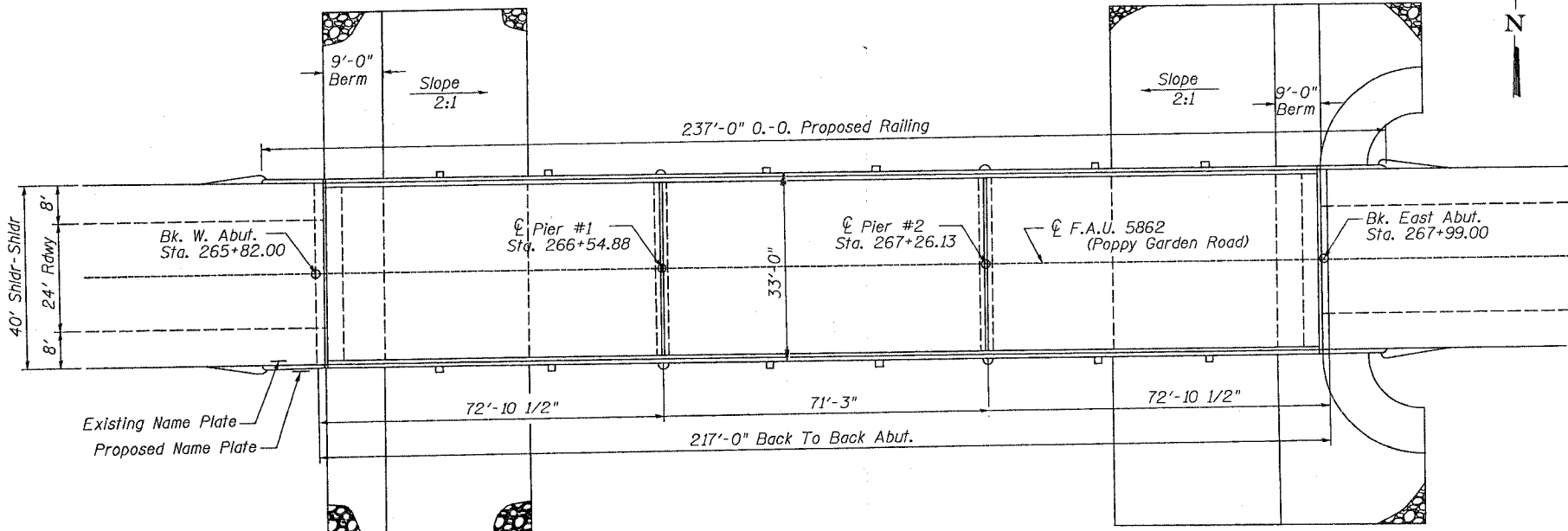
Plan dimensions and details relative to existing structure have been taken from existing plans and are subject to nominal construction variations. It shall be the Contractor's responsibility to verify such dimensions and details in the field and make necessary approved adjustments prior to construction or ordering of materials. Such variations shall not be cause for additional compensation for a change in the scope of work; however, the Contractor will be paid for the quantity actually furnished at the unit price bid for the work.

Existing structure construction plans and subsequent repair plans are available from the IDOT District office by written request. The contractor shall be responsible for obtaining and reviewing the plans prior to construction.

The minimum thickness of the Concrete overlay shall be 5" and varies as required to adjust for the new profile grade and beam camber.

All construction joints shall be bonded.

No instream work will be allowed on this project.



PLAN

The contractor is advised that the existing PPC Deck Beams are in a deteriorated condition with reduced load carrying capacity. It is the contractor's responsibility to account for the condition of the beams when developing construction procedures for removal and replacement of the superstructure.

If the contractor's procedure for existing beam removal or placement of new beams involves placement of cranes or other heavy equipment on new beams, a detailed procedure shall be submitted to the Engineer for approval. The procedure shall include calculations, prepared and sealed by an Illinois Licensed Structural engineer, verifying that the equipment and procedure used will not overstress the new beams. To distribute load to multiple beams and protect the concrete, in all cases a double layer mat of heavy timbers shall be used at all times under crane tracks or wheels and any other outriggers in the down position. If necessary, shims shall be used under the crane mat to ensure uniform contact with the underlying beams. If cranes or other heavy equipment will be placed on new beams prior to placement of the concrete wearing surface, it shall be done after the dowel rods are grouted and cured for 24 hours minimum and prior to grouting the shear keys. A temporary means of lateral restraint will be required for fascia beams at expansion ends of beams to prevent movement of the beams.

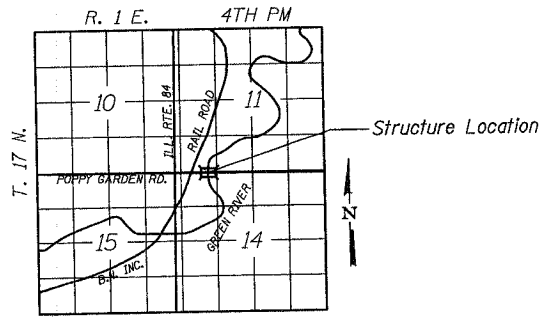
The cut strands at each beam end shall be given two coats of zinc dust spray or paint meeting the requirements of ASTM A 780. The zinc dust spray or paint shall be applied before corrosion appears and allowed to dry according to the manufacturer's specifications prior to another coat of zinc. A concrete sealer meeting the requirements of Section 587 of the Standard Specifications shall be applied to the exterior face and 9" in on the underside of the fascia beams. The sealer shall be applied after visible crack growth has subsided. This work shall be performed by the producer and included with the cost of the item.

LOADING HS20-44 (New Construction)
No Allowance for Future Wearing Surface

DESIGN SPECIFICATIONS (New Construction)
2002 AASHTO

DESIGN STRESSES (New Construction)

FIELD UNITS	PRECAST PRESTRESSED UNITS
f'c = 3,500 p.s.i.	f'c = 5,000 p.s.i.
fy = 60,000 p.s.i. (Reinforcement)	f'ci = 4,000 p.s.i.
	f's = 270,000 p.s.i. (1/2" Low Lax Strands)
	f'si = 201,960 p.s.i. (1/2" Low Lax Strands)



LOCATION SKETCH

WENDLER ENGINEERING SERVICES, INC.
Illinois Professional Design
Firm No. 184-000848
Bridge plan sheets
1 thru 8 Only

SCOTT A. BROWN
DIXON, ILLINOIS
ILLINOIS LICENSED STRUCTURAL ENGINEER NO. 081-005981
EXPIRES 11-30-2006

SCOTT A. BROWN
DATE 8/31/05

TOTAL BILL OF MATERIAL

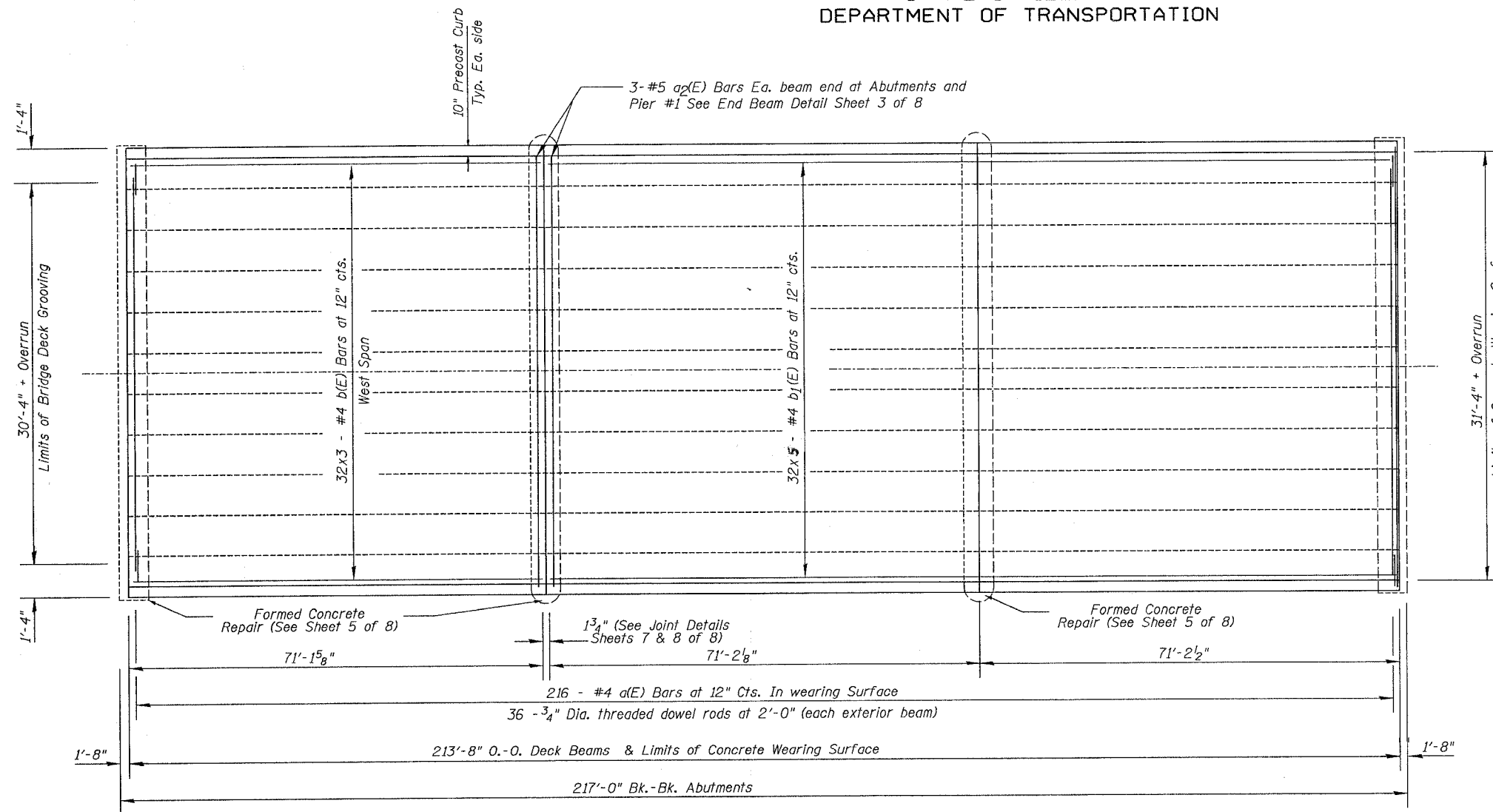
ITEM	UNIT	TOTAL
Removal of Existing Superstructures	Each	1
Bridge Deck Grooving	Sq Yd	721
Concrete Wearing Surface	Sq Yd	744
Precast Prestressed Concrete Deck Beams (33" Depth)	Sq. Ft.	7046
Reinforcement Bars, Epoxy Coated	Pound	10170
Formed Concrete Repair (Depth Equal to or Less Than 5 Inches)	Sq. Ft.	30
Name Plates	Each	1
Concrete Superstructures	Cu. Yd.	9.7
Concrete Removal	Cu. Yd.	9.2
Bridge Joint System Expansion 1"	Foot	99
Steel Bridge Rail, Type SM	Foot	474
Protective Coat	Sq Yd	914

GENERAL PLAN AND ELEVATION
F.A.U. 5862 (POPPY GARDEN RD)
OVER GREEN RIVER
SECTION 2BR-1
HENRY COUNTY
STR. NO. 037-0127

DESIGNED	SB
CHECKED	RB
DRAWN	BH, BS
CHECKED	SB

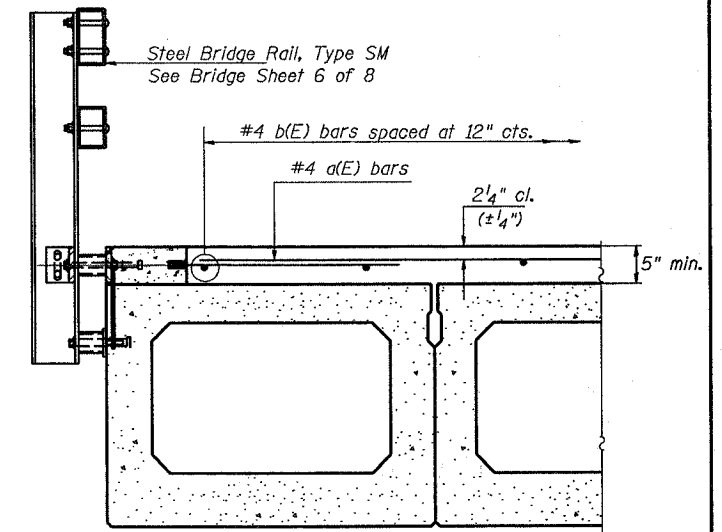
STATE OF ILLINOIS
DEPARTMENT OF TRANSPORTATION

ROUTE NO.	SECTION	COUNTY	SHEET	SHEET NO.
	*	Henry	26	11
SHEETS				
* Section 2BR-1 Contract #64B10				

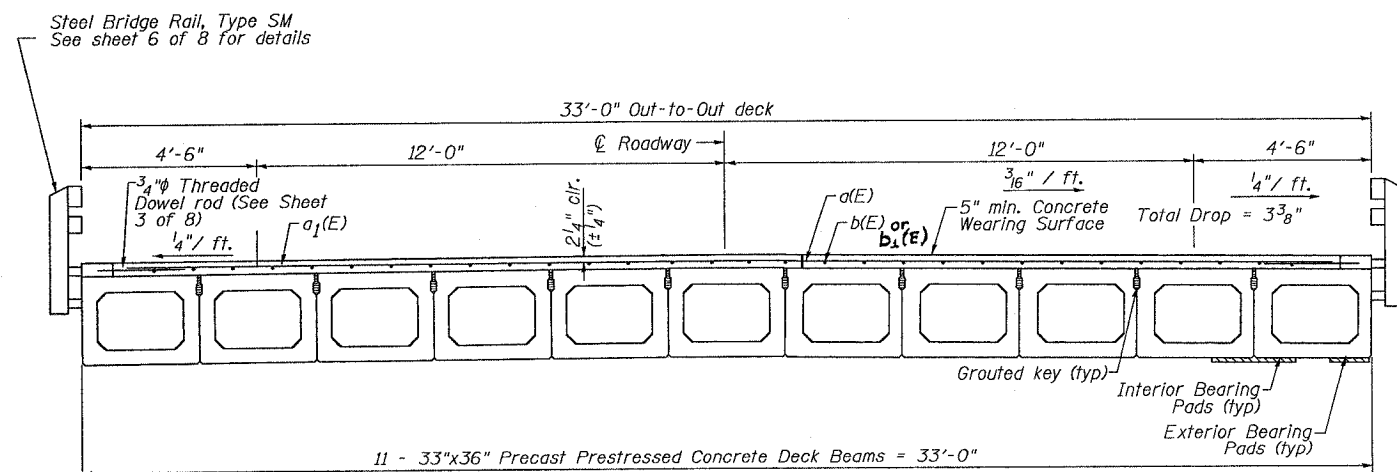


DECK PLAN

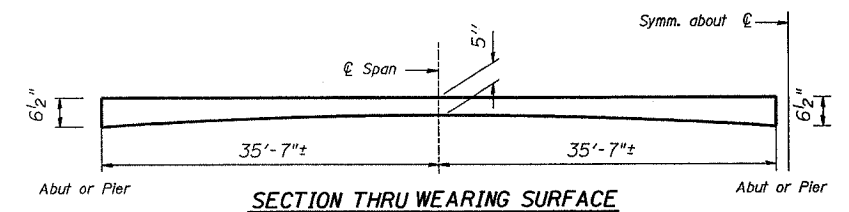
MIN. BAR LAP
#4 Bar = 1'-4"



SECTION THRU DECK EDGE



CROSS SECTION
(Looking East)



SECTION THRU WEARING SURFACE

BILL OF MATERIAL - SUPERSTRUCTURE

Bar	Size	Number	Length	Shape
a(E)	#4	216	28'-6"	---
b(E)	#4	96	24'-9"	---
a ₂ (E)	#5	12	32'-6"	---
b ₁ (E)	#4	160	29'-9"	---
ITEM		UNIT	TOTAL	
Removal of Existing Superstructures		Each	1	
Bridge Deck Grooving		Sq Yd	721	
Concrete Wearing Surface		Sq Yd	744	
Reinforcement Bars (Epoxy Coated)		Pound	9290	

Reinforcement bars designated (E) shall be epoxy coated.
Bars indicated thus 32x4 - #4 etc. indicates 32 lines of bars with 4 lengths per line.

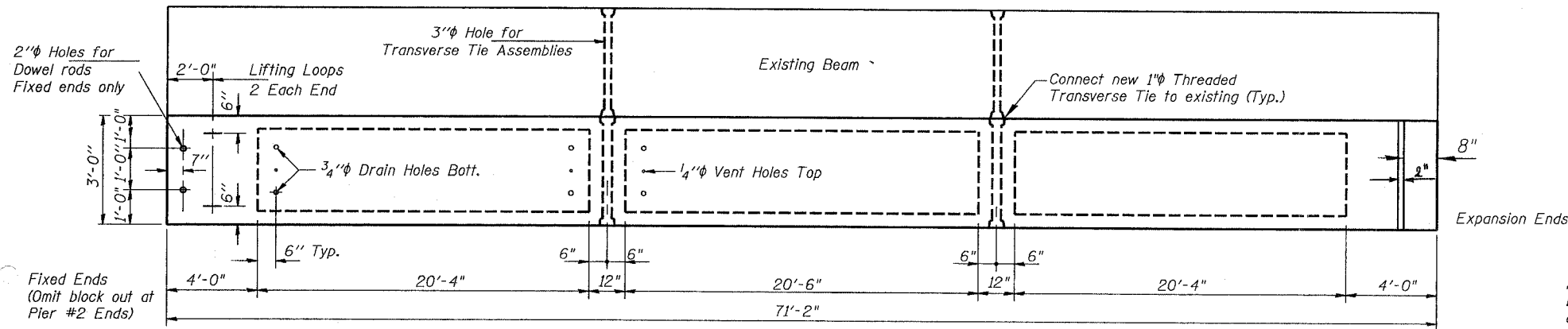
DECK OVERLAY DETAILS
F.A.U. 5862 (POPPY GARDEN RD)
OVER GREEN RIVER
SECTION 2BR-1
HENRY COUNTY
STR. NO. 037-0127

DESIGNED	SB
CHECKED	RB
DRAWN	DB, BS
CHECKED	SB

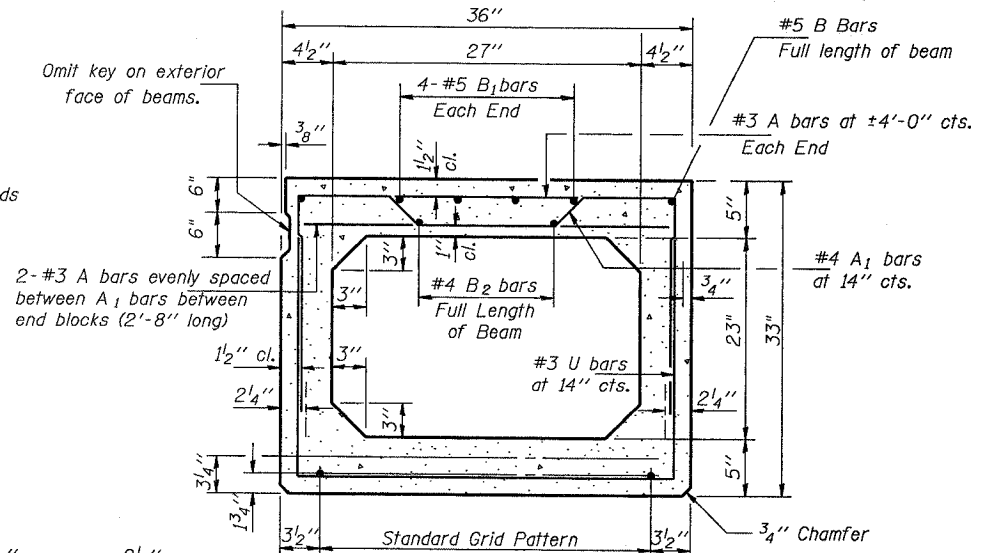
STATE OF ILLINOIS
DEPARTMENT OF TRANSPORTATION

ROUTE NO.	SECTION	COUNTY	TOTAL SHEETS	SHEET NO.
S.B.L.	*	Henry	26	12
F.A.U.				8 SHEETS
FED. ROAD DIST. NO. 7	ILLINOIS	FED. AID PROJECT		

* Section 2BR-1 Contract #64B10



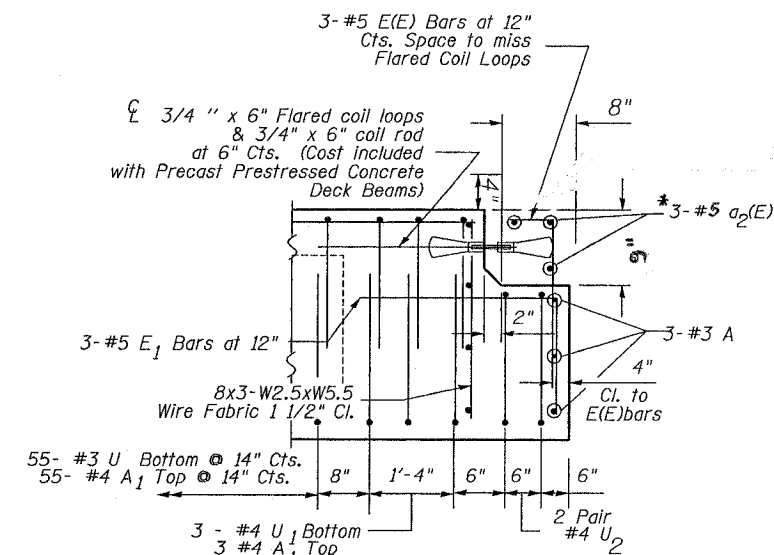
PLAN



TYPICAL SECTION

16-1/2" Strands Each Strand Stressed to 30,900 Lbs.
8-Strands 1 3/4" up, 6-Strands 3/4" up
2-Strands 9" up

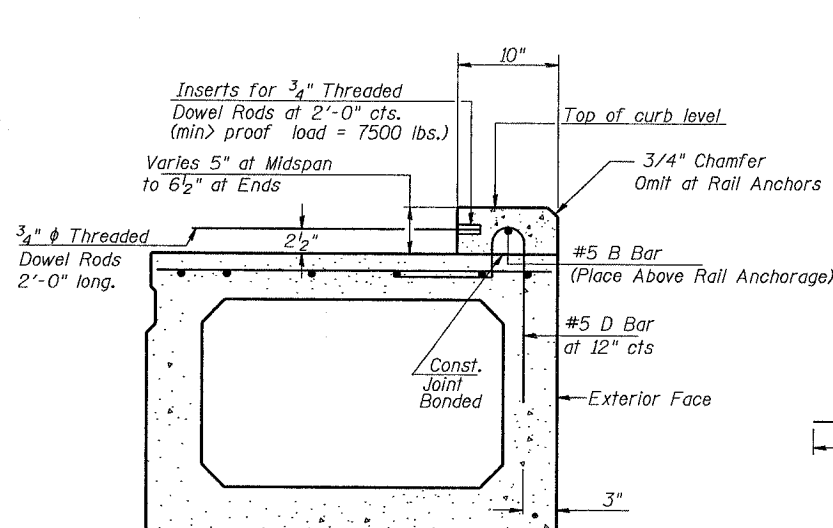
Note: Place strands symmetrically about center of beam.



BEAM END ELEVATION

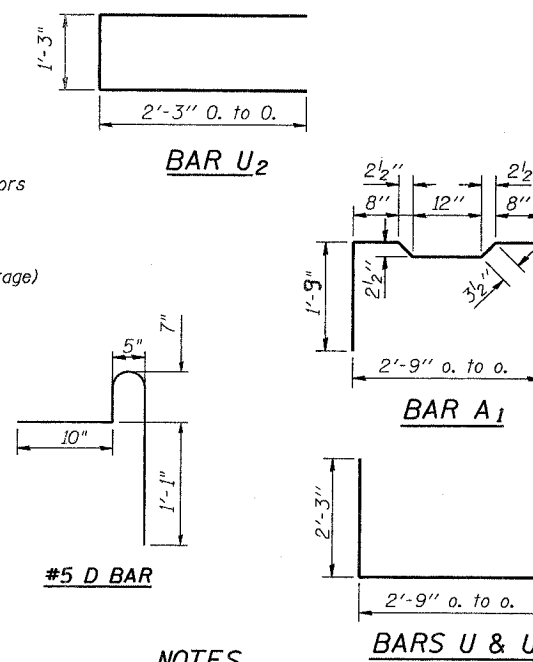
(ABUTMENTS AND PIER #1 ENDS)

* (E) Bars included with Deck Quantities



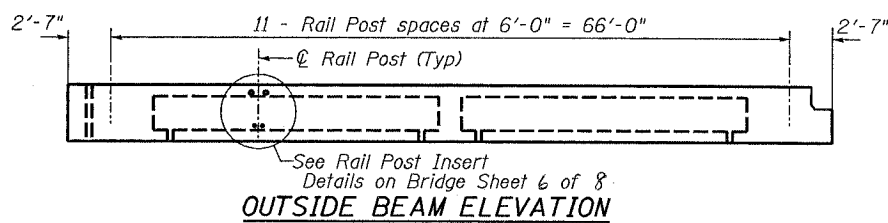
SECTION THRU EXTERIOR BEAMS

Showing Precast Curb

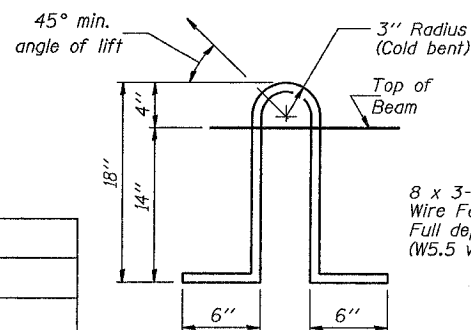


NOTES

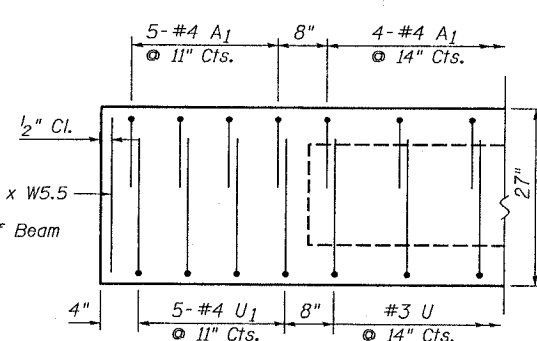
Prestressing steel shall be uncoated high strength, low relaxation 7-wire strand, Grade 270. The nominal diameter shall be 1/2" and the nominal cross-sectional area shall be 0.153 sq. in. Lifting loops shall be 2 - 1/2" Dia.-270 ksi strands, as shown. The 1" Dia. rods in the transverse tie assembly shall be tightened to a snug fit and the threads set. Pockets that receive transverse tie bar on outside shall be filled with grout after transverse tie assembly is in place. Non prestressing steel shall conform to AASHTO M-31, or M-322 Grade 60. The bearing seat surfaces shall be adjusted by shimming to assure firm and even bearing. Two 1/8" fabric adjusting shims of the dimensions of the Exterior Bearing Pad shall be provided for each bearing. Keyway surfaces shall be cleaned to remove form oil or other bond breaking material prior to shipment of the beams. Cleaning shall be done by sandblasting the keyway areas between top of the beam and the bottom edge of the key. Corrosion Inhibitor, as covered in the Special Provisions, shall be used in the concrete for precast prestressed concrete deck beams. Required Release Strength, f'ci, shall be 4000 p.s.i. Bridge rail inserts shall be cast into the precast beams and curbs. Curbs shall be cast by the precast prestressed concrete fabricator after the strands have been released and prior to shipping the beams. The concrete used in the curb shall meet the requirements specified for the beams. The curbs including all concrete and reinforcement will not be paid for separately but included with Precast Prestressed Concrete Deck Beams. The curb inserts and threaded dowel rods may be either epoxy coated or galvanized and the cost shall be considered included with Precast Prestressed Concrete Deck Beams (33" Depth). The cut strands at each beam end shall be given two coats of zinc dust spray or paint meeting the requirements of ASTM A 780. The zinc dust spray or paint shall be applied before corrosion appears and allowed to dry according to the manufacturer's specifications prior to another coat of zinc. A concrete sealer meeting the requirements of Section 587 of the Standard Specifications shall be applied to the exterior face and 9" in on the underside of the fascia beams. The sealer shall be applied after visible crack growth has subsided. This work shall be performed by the producer and included with the cost of the beam.



OUTSIDE BEAM ELEVATION



LIFTING LOOP DETAIL



FIXED END ELEVATION

(PIER 2 ENDS ONLY)

BILL OF MATERIAL

ITEM	UNIT	TOTAL
Precast Prestressed Conc. Deck Bms.	Sq. Ft.	7046

Reinforcement bars designated (E) shall be epoxy coated.
*Exterior Beams Only

SUPERSTRUCTURE
F.A.U. 5862 (POPPY GARDEN RD)
OVER GREEN RIVER
SECTION 2BR-1
HENRY COUNTY
STR. NO. 037-0127

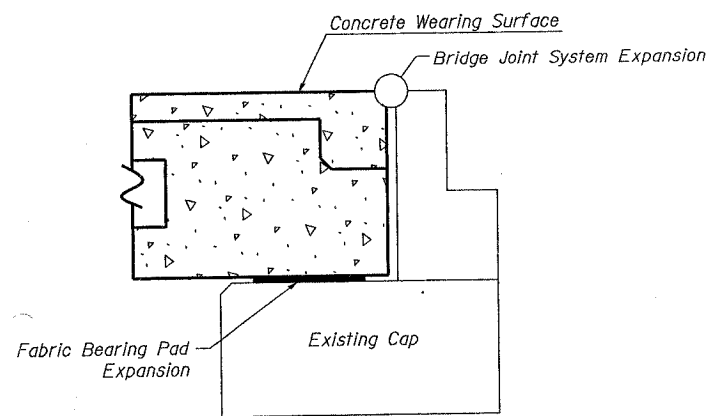
DESIGNED	SB
CHECKED	RB
DRAWN	DB, BS
CHECKED	SB

PD-5-S 3-1-94

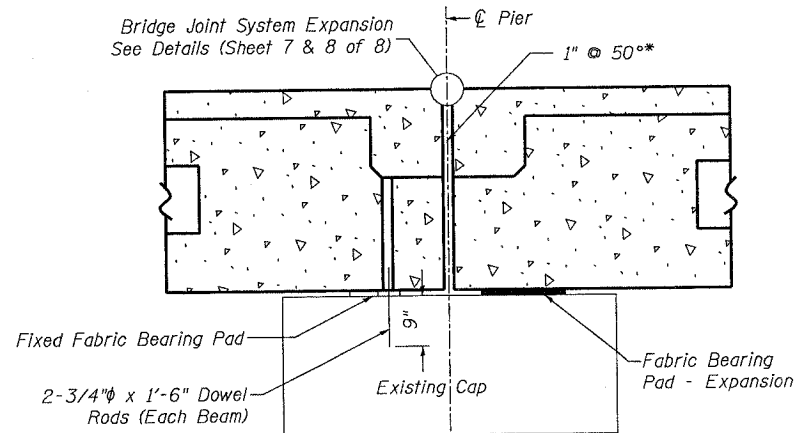
STATE OF ILLINOIS
DEPARTMENT OF TRANSPORTATION

ROUTE NO.	SECTION	COUNTY	JOB#	SHEET	SHEET NO.
	*	Henry	26	13	8
F.A.U. SHEETS					
FED. ROAD DIST. NO. 7 BILLINGS FED. AID PROJECT-					

* Section 2BR-1 Contract #64B10

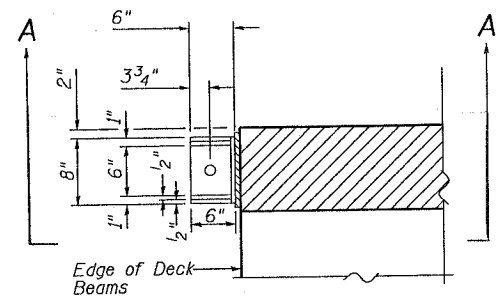
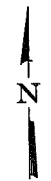
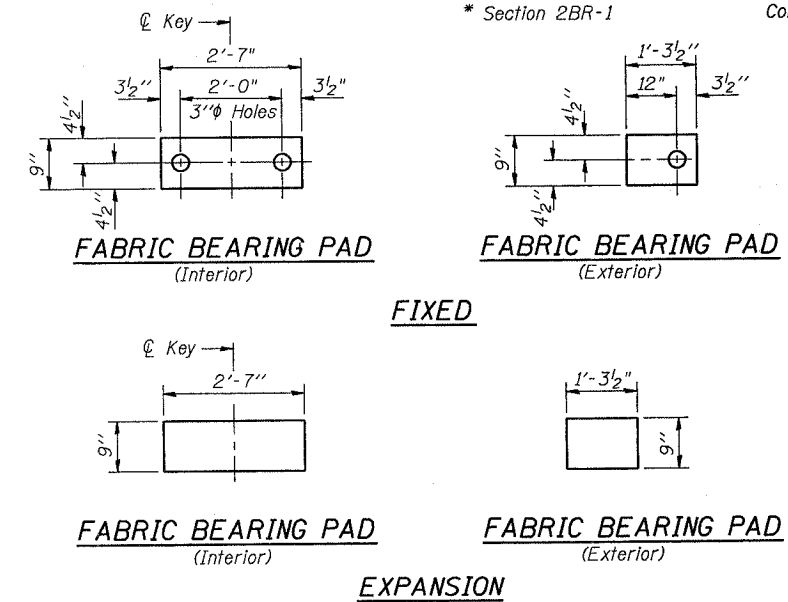


SECTION THRU ABUTMENT



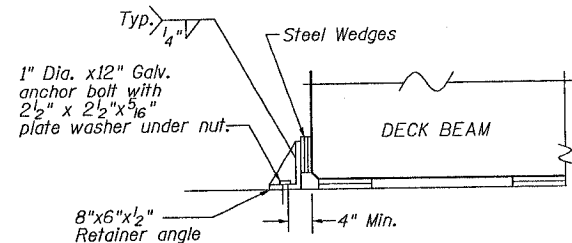
SECTION THRU PIER #1

* 1" Dimension may vary to accommodate tolerance on beam lengths



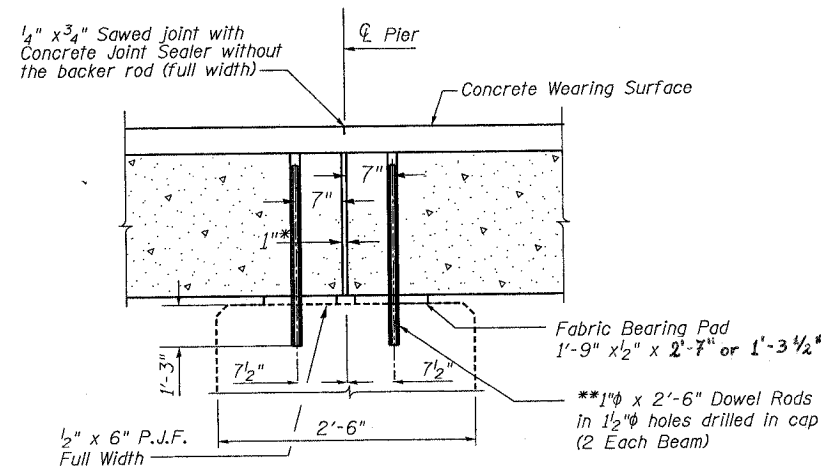
**PLAN @ EXPANSION ENDS
TEMPORARY SIDE RETAINER
DETAIL**

(6 Required - Cost Included With
Precast Prestressed Deck Beams)



SECTION A-A

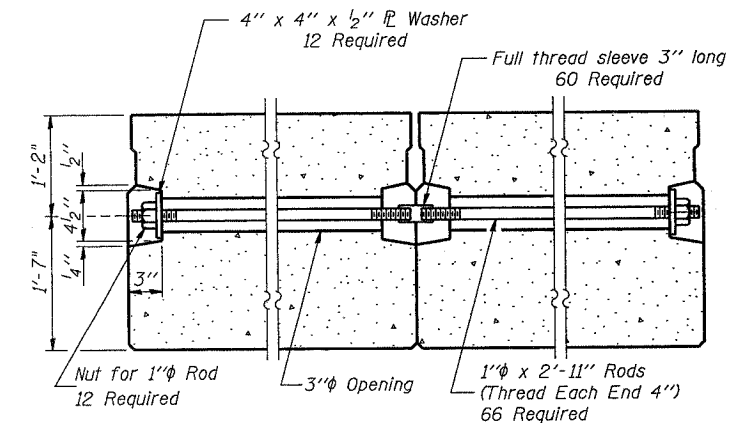
Note: After block-outs are poured and cured the retainer angles shall be removed. Anchor bolts may be left in place.



SECTION THRU PIER #2

(Dimension at Rt. L's)

* 1" Jt. shall be filled with non-shrink grout. 1" dimension may vary to accommodate tolerance in beams lengths.



TYPICAL TRANSVERSE TIE ASSEMBLY

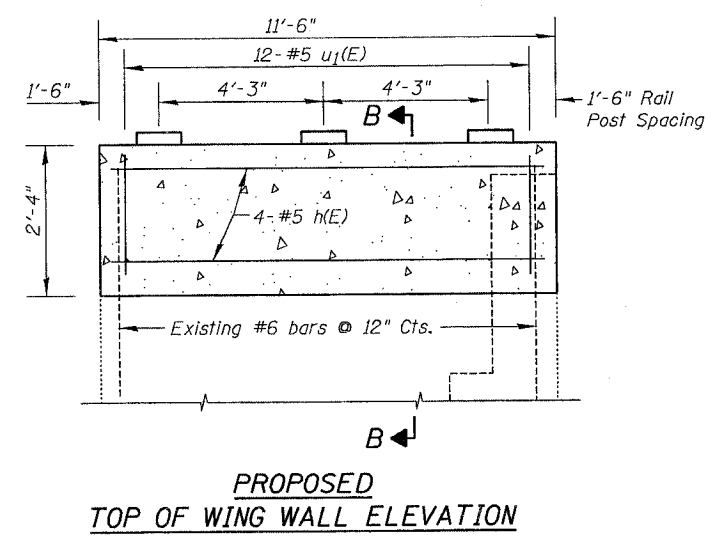
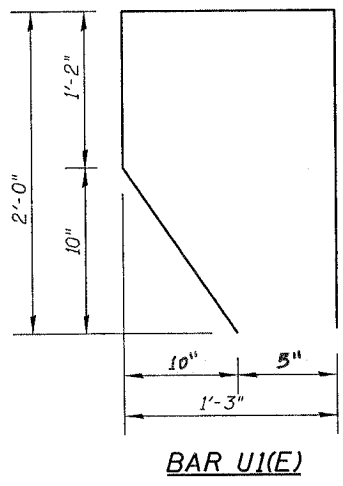
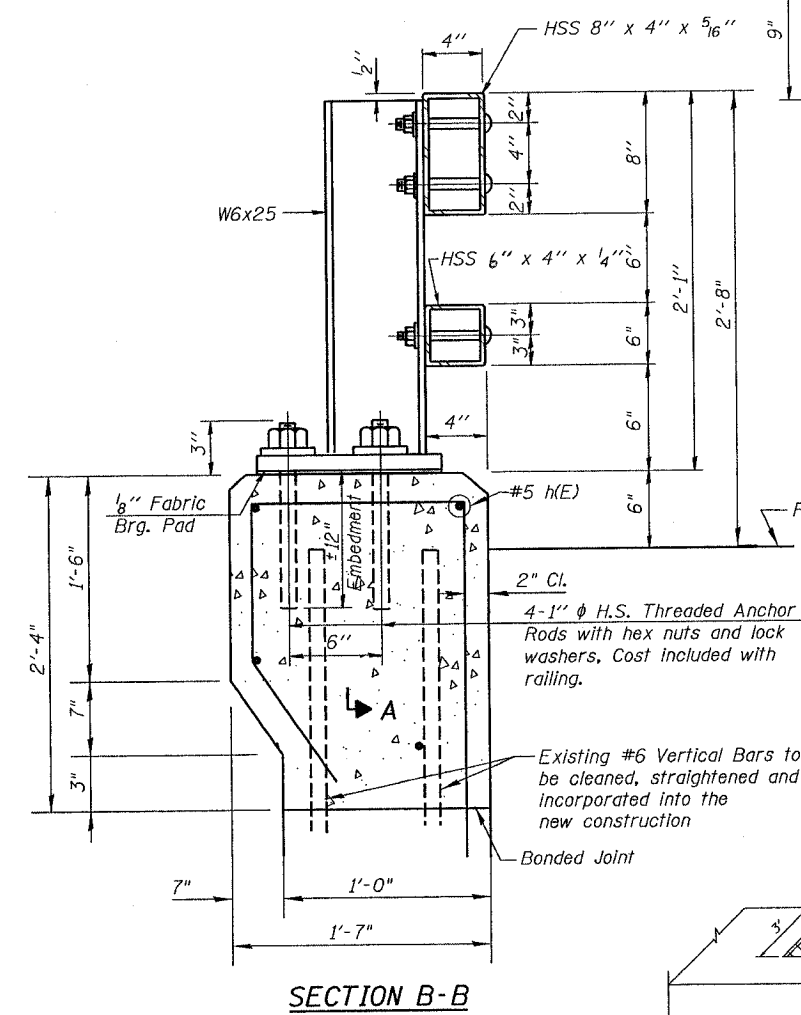
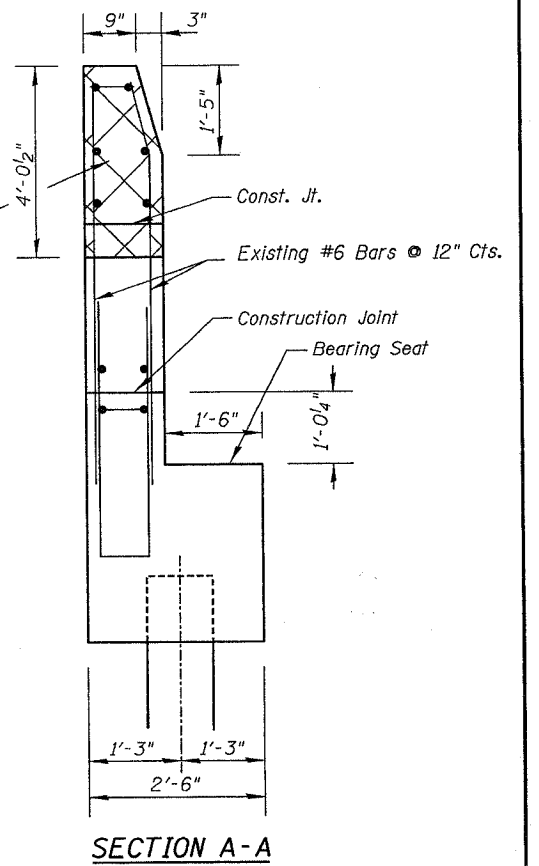
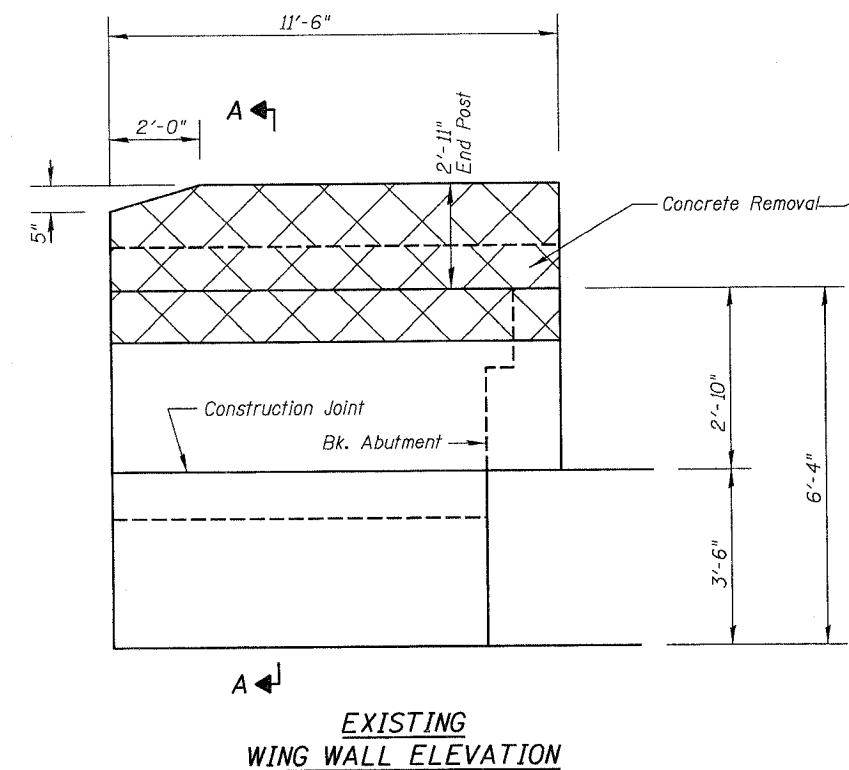
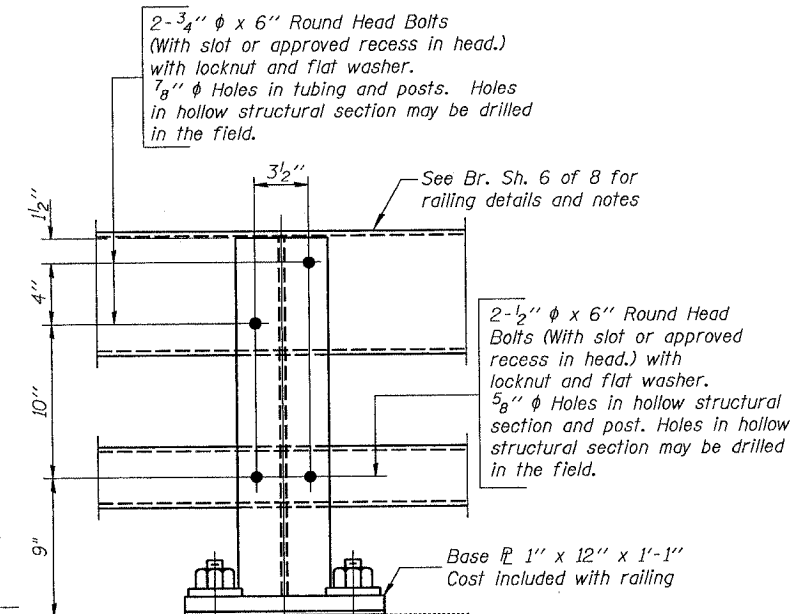
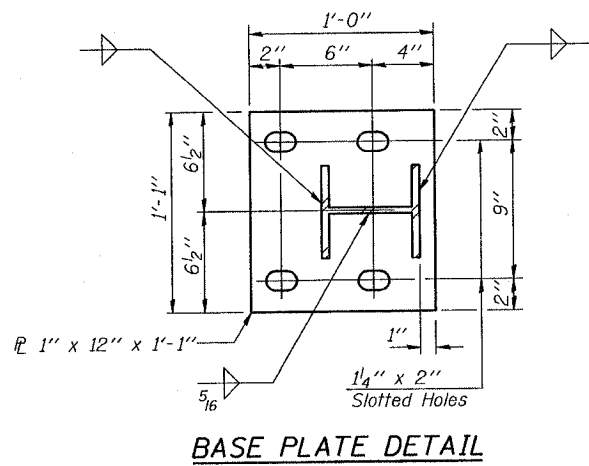
DESIGNED	SB
CHECKED	RB
DRAWN	DB, BS
CHECKED	SB

SUPERSTRUCTURE DETAILS
F.A.U. 5862 (POPPY GARDEN RD)
OVER GREEN RIVER
SECTION 2BR-1
HENRY COUNTY
STR. NO. 037-0127

STATE OF ILLINOIS
DEPARTMENT OF TRANSPORTATION

ROUTE NO.	SECTION	COUNTY	SHEET	SHEET	SHEET NO. 5
	*	Henry	26	14	8 SHEETS
FED. ROAD DIST. NO. 7	ILLINOIS	FED. AID PROJECT-			

* Section 2BR-1 Contract #64B10

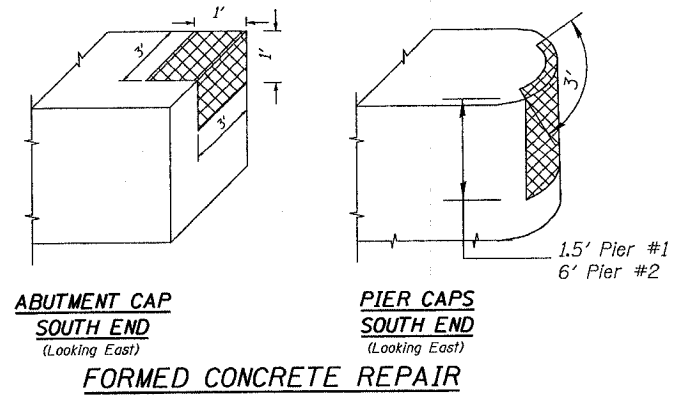


BILL OF MATERIAL - ABUTMENTS

Bar	Size	Number	Length	Shape
* a ₁ (E)	#6	4	32'-9"	—
* u(E)	#5	62	3'-5"	—
h(E)	#5	16	11'-3"	—
u ₁ (E)	#5	48	5'-7"	—

ITEM	UNIT	TOTAL
Concrete Removal	Cu Yd	9.2
Reinforcement Bars (Epoxy Coated)	Pound	880
*Concrete Superstructures	Cu Yd	9.7
Formed Concrete Repair (Depth Equal to or Less Than 5 Inches)	Sq Ft	30

Reinforcement bars designated (E) shall be epoxy coated.
*See Joint Details Sheet 7 of 8



DESIGNED	SB
CHECKED	RB
DRAWN	DB, BS
CHECKED	SB

ABUTMENT DETAILS
F.A.U. 5862 (POPPY GARDEN RD)
OVER GREEN RIVER
SECTION 2BR-1
HENRY COUNTY
STR. NO. 037-0127

STATE OF ILLINOIS
DEPARTMENT OF TRANSPORTATION

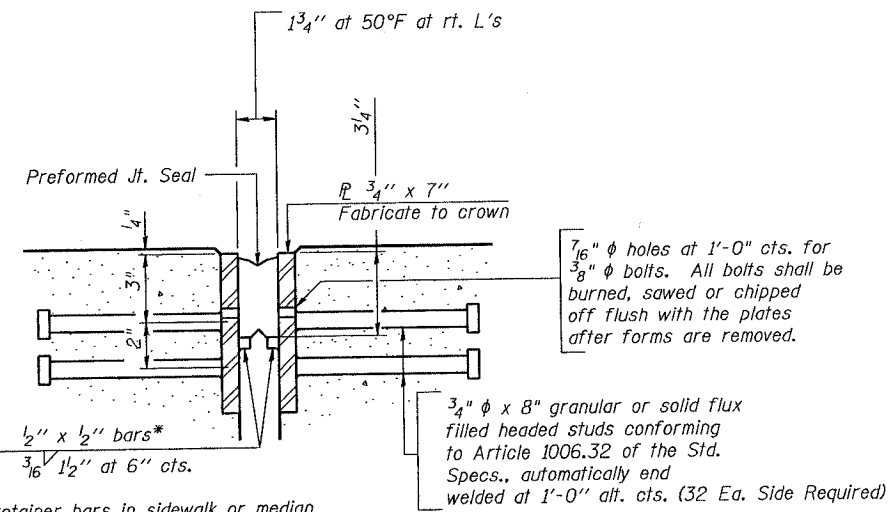
ROUTE NO.	SECTION	COUNTY	TOTAL SHEETS	SHEET NO.	SHEET NO. 7
S. B. I.	*	Henry	26	16	8 SHEETS
F. A. U.					
FED. ROAD DIST. NO. 7	ILLINOIS	FED. AID PROJECT-			

* Section 2BR-1 Contract #64B10

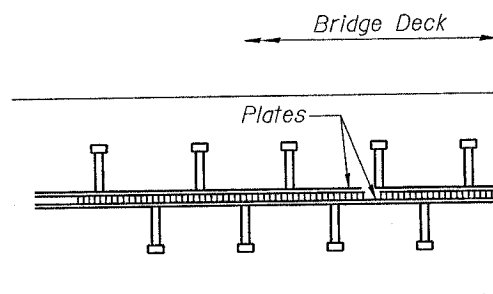
GENERAL NOTES

Furnish steel plates in segments of 20 feet maximum length. Maximum space between installed segments shall be 3/16". Seal space with silicone sealant suitable for structural steel.

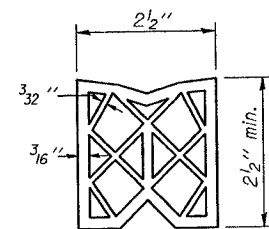
Bridge Joint System (Expansion)		
Design Movement	Required Preformed Joint Seal Size	Required Strip Seal Rated movement
1"	2 1/2"	1"



SECTION THRU EXPANSION JOINT
(2 1/2" and 4" joint seals)

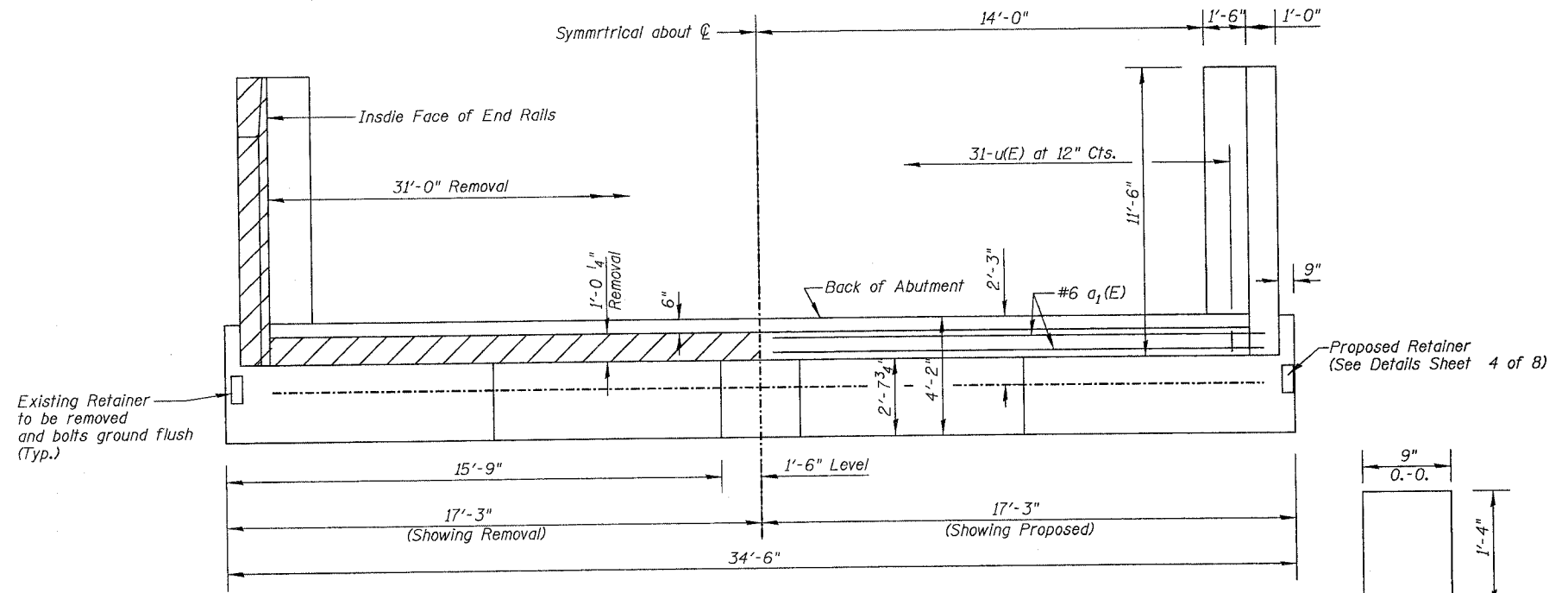


PLAN VIEW



PREFORMED JOINT SEAL

DESIGNED	SB
CHECKED	RB
DRAWN	DB, BS
CHECKED	SB



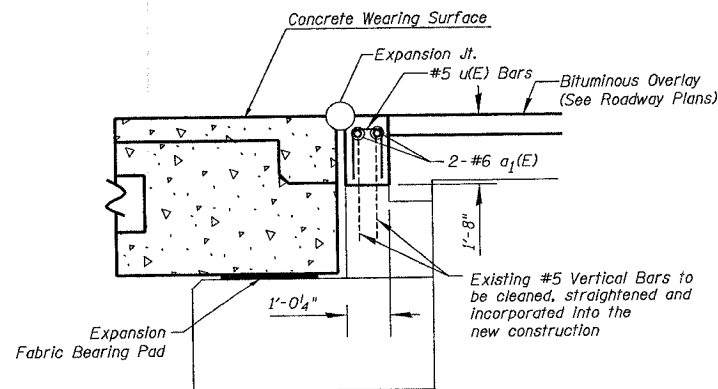
ABUTMENT TOP VIEW

BAR u(E)

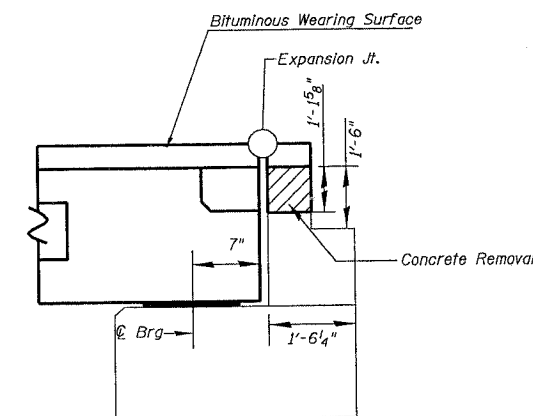
BILL OF MATERIAL

Item	Unit	Total
Bridge Joint System (Expansion)	foot	99

Pier #1 & Abutments



PROPOSED SECTION THRU ABUTMENT



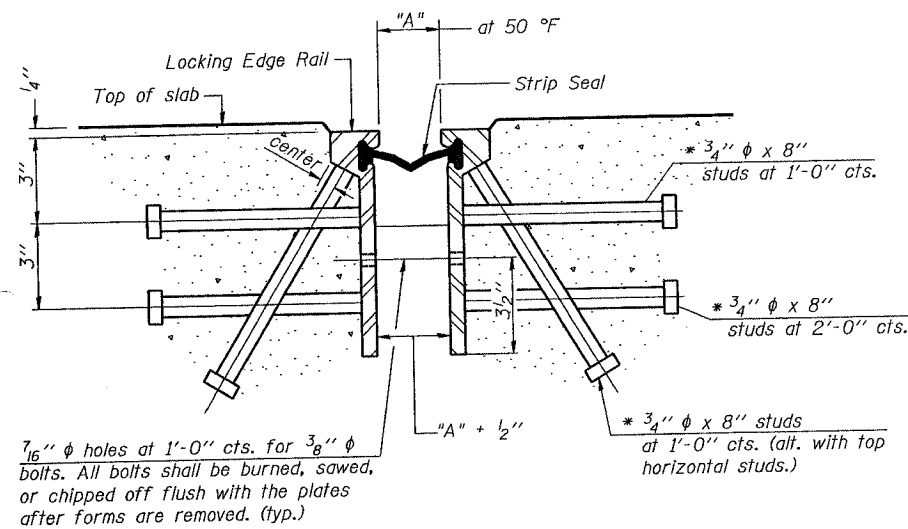
EXISTING SECTION THRU ABUTMENT

(Sheet 1 of 2)
BRIDGE JOINT SYSTEM - EXPANSION (PREFORMED JOINT SEAL)
F.A.U. 5862 (POPPY GARDEN RD)
OVER GREEN RIVER
SECTION 2BR-1
HENRY COUNTY
STR. NO. 037-0127

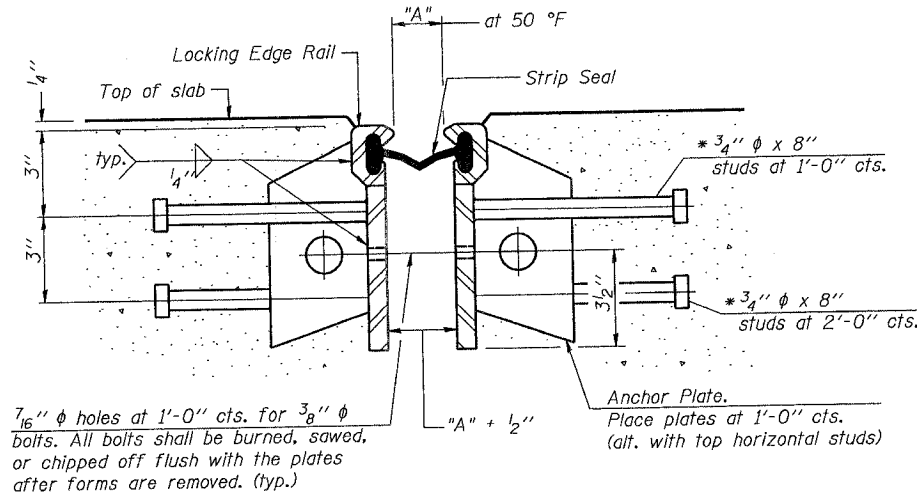
STATE OF ILLINOIS
DEPARTMENT OF TRANSPORTATION

ROUTE NO.	SECTION	COUNTY	SHEETS	SHEET NO.	SHEET NO. 2
S. B. I.	*	Henry	26	17	2 SHEETS
F. A. P.					
FED. ROAD DIST. NO. 7	ILLINOIS	FED. AID PROJECT			

* Section 2BR-1 Contract #64B10



Required Strip Seal rated movement	"A"
1"	1/8"



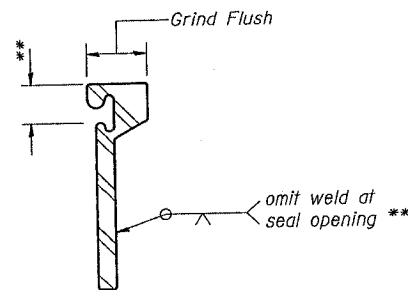
GENERAL NOTES

The strip seal shall be made continuous and shall have a minimum thickness of 1/4". The configuration of the strip seal shall match the configuration of the Locking Edge Rails.
The height and thickness of the Locking Edge Rails shown are minimum dimensions. The actual configuration of the Locking Edge Rails and matching strip seal may vary from manufacturer to manufacturer. Flanged edge rails will not be allowed.
Locking Edge Rails may be spliced at slope discontinuities and stage construction joints.
The manufacturer's recommended installation methods shall be followed.
The joint opening and deck dimensions detailed on the superstructure are based on a preformed joint seal. If the contractor elects to use the alternate strip seal joint, the opening and deck dimensions shall be modified according to the dimensions detailed on this sheet. Required modifications shall be made at no additional cost to the State.

SECTION THRU ROLLED RAIL EXP. JOINT
(180 Studs Required Per Joint)

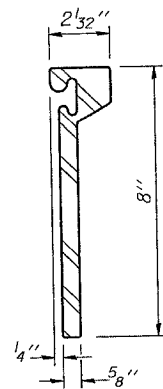
* Granular or solid flux filled headed studs conforming to Article 1006.32 of the Std. Specs., automatically end welded.

SECTION THRU WELDED RAIL EXP. JOINT
(110 Studs Required per Joint)
(74 Anchor Plates Required Per Joint)

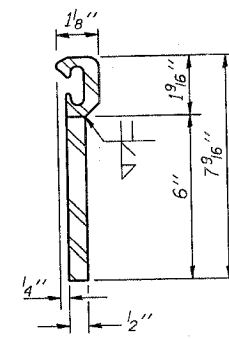


LOCKING EDGE RAIL SPLICE

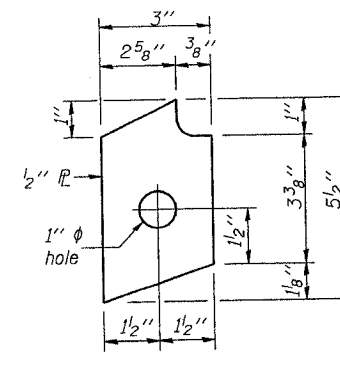
The inside of the locking edge rail groove shall be free of weld residue.



ROLLED (EXTRUDED) RAIL



WELDED RAIL



ANCHOR PLATE
(for welded rail)

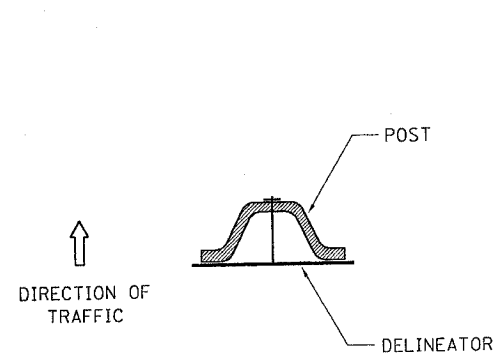
LOCKING EDGE RAILS

DESIGNED	SB
CHECKED	RB
DRAWN	DB, BS
CHECKED	SB

(Sheet 2 of 2)
BRIDGE JOINT SYSTEM - EXPANSION
(ALTERNATE-STRIP SEAL)
F.A.U. 5862 (POPPY GARDEN RD)
OVER GREEN RIVER
SECTION 2BR-1
HENRY COUNTY
STR. NO. 037-0127

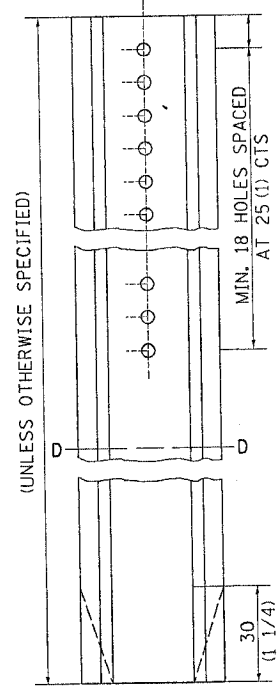
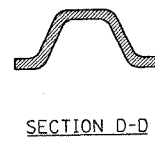
F.A.J. RTE.	SECTION	COUNTY	TOTAL SHEETS	SHEET NO.
5862	2BR-1	HENRY	26	18
STA.		TO STA.		
FED. ROAD DIST. NO.		ILLINOIS	FED. AID PROJECT	

DELINEATOR AND POST ORIENTATION



DELINEATORS SHALL BE INSTALLED ACCORDING TO STANDARD 635001 EXCEPT THAT THE POST SHALL BE ROTATED 180°. THE POST WILL HAVE THE WIDE SIDE FACING TRAFFIC AND THE DELINEATOR ATTACHED AS SHOWN ABOVE.

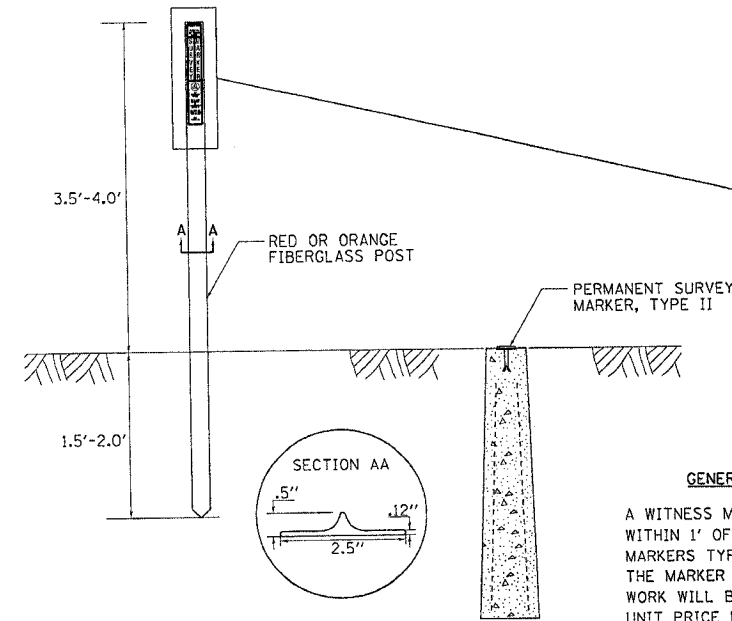
ALL DIMENSIONS ARE IN MILLIMETERS (INCHES) UNLESS OTHERWISE NOTED.



DELINEATOR AND POST ORIENTATION 37.4

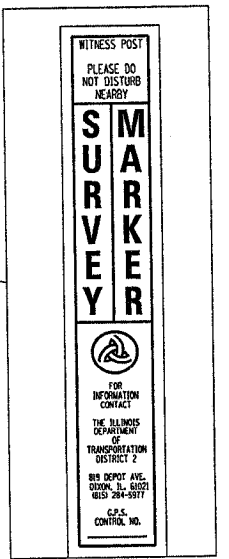
REVISED 1-31-00

WITNESS MARKER FOR PERMANENT SURVEY MARKERS TYPE II



GENERAL NOTES

A WITNESS MARKER SHALL BE INSTALLED WITHIN 1' OF ALL PERMANENT SURVEY MARKERS TYPE II EXCEPT IN AREAS WHERE THE MARKER IS IN THE SIDEWALK. THIS WORK WILL BE INCLUDED TO THE CONTRACT UNIT PRICE PER EACH FOR PERMANENT SURVEY MARKERS, TYPE II.

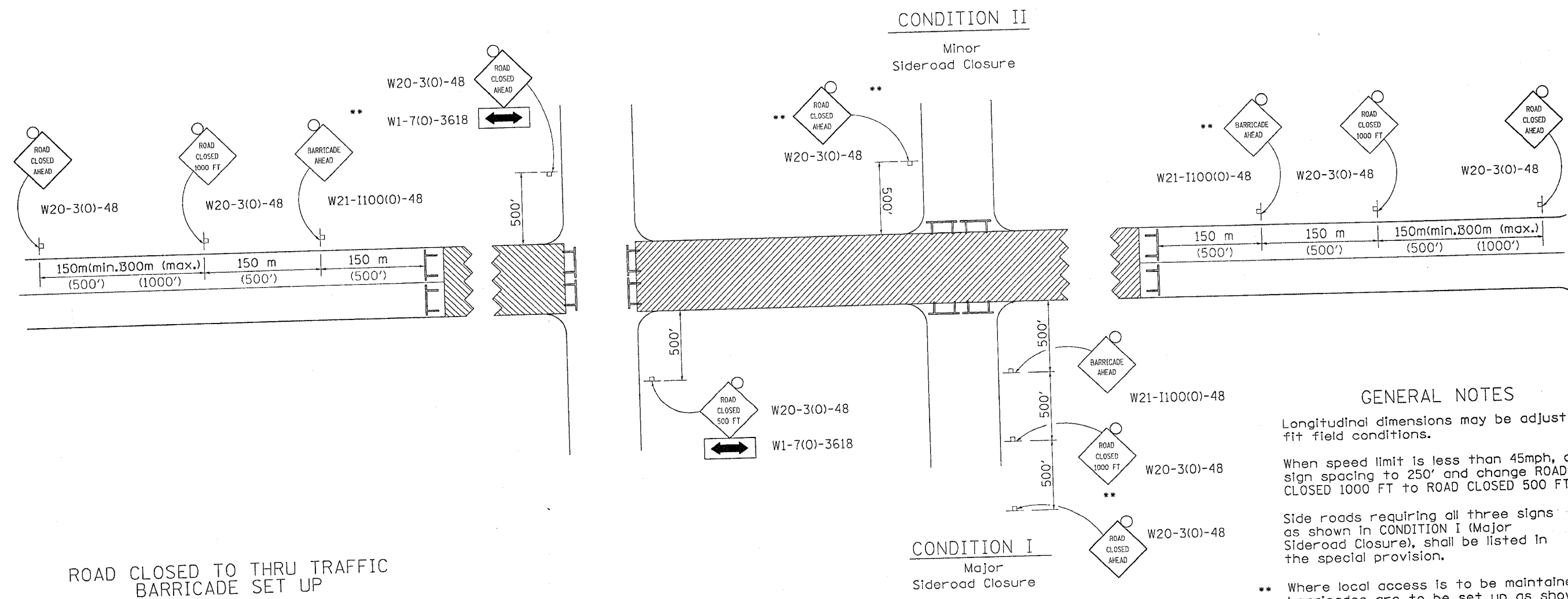


WITNESS MARKER FOR PERMANENT SURVEY MARKERS TYPE II 38.4

REVISED 1-31-00

CONTRACT NO. 64B10			
F.A.U. RTE.	SECTION	COUNTY	TOTAL SHEET NO.
5862	2BR-1	HENRY	26 19
STA.	TO STA.		
FED. ROAD DIST. NO.	ILLINOIS	FED. AID PROJECT	

TRAFFIC CONTROL FOR ROAD CLOSURE



GENERAL NOTES

Longitudinal dimensions may be adjusted to fit field conditions.

When speed limit is less than 45mph, change sign spacing to 250' and change ROAD CLOSED 1000 FT to ROAD CLOSED 500 FT.

Side roads requiring all three signs as shown in CONDITION I (Major Sideroad Closure), shall be listed in the special provision.

** Where local access is to be maintained, barricades are to be set up as shown in Road Closed to thru traffic.

Type III Barricades and R11-2-4830 signs shall be as shown in "Road Closed To All Traffic" detail on Highway Standard 702001.

- SYMBOLS**
- Work area
 - Type III Barricade with Flashers
 - Sign with flashing light

Type III Barricades and R11-4-4830 signs shall be as shown in "Road Closed To All Thru Traffic" detail on Highway Standard 702001. If the distance "D" exceeds 600 m (2000') an additional set of barricades and R11-4-4830 shall be placed at each end of the work area.

All dimensions are in millimeters (inches) unless otherwise shown.

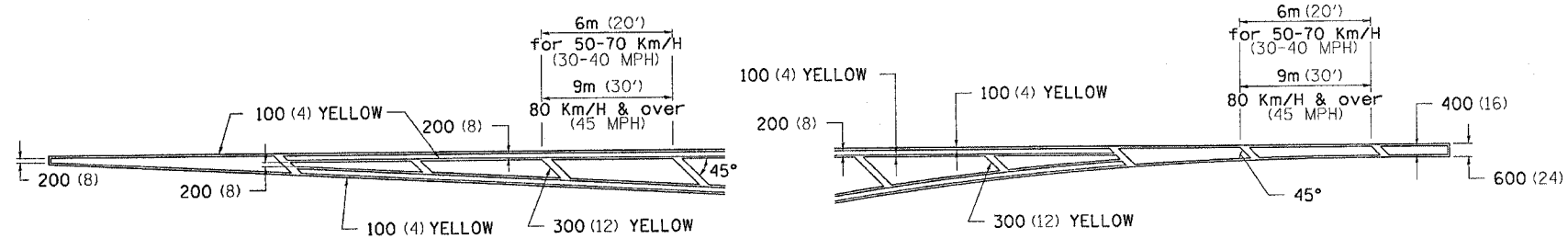
TYPICAL APPLICATION FOR ROAD CLOSURE

PLOT DATE = Fri Sep 02 14:35:58 2005
 FILE NAME = c:\p\projects\2005\205\dr7205.dwg
 PLOT SCALE = 50.0000 / IN.
 REFERENCE = SHEET

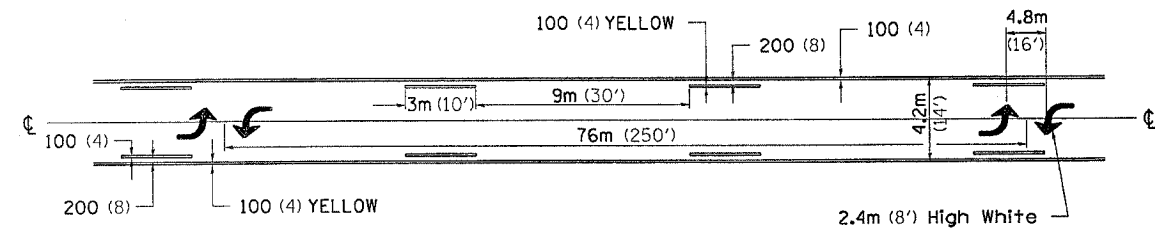
F.A.J. RTE.	SECTION	COUNTY	TOTAL SHEETS	SHEET NO.
5862	2BR-1	HENRY	26	20
STA.		TO STA.		
FED. ROAD DIST. NO.	ILLINOIS	FED. AID PROJECT		

TYPICAL PAVEMENT MARKINGS

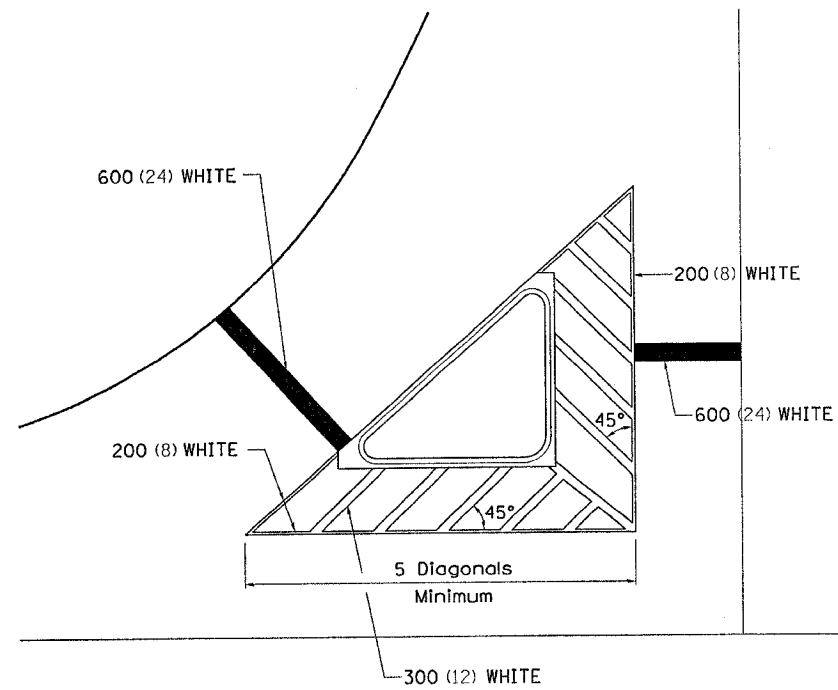
TYPICAL PAVEMENT MARKING FOR FLUSH MEDIAN



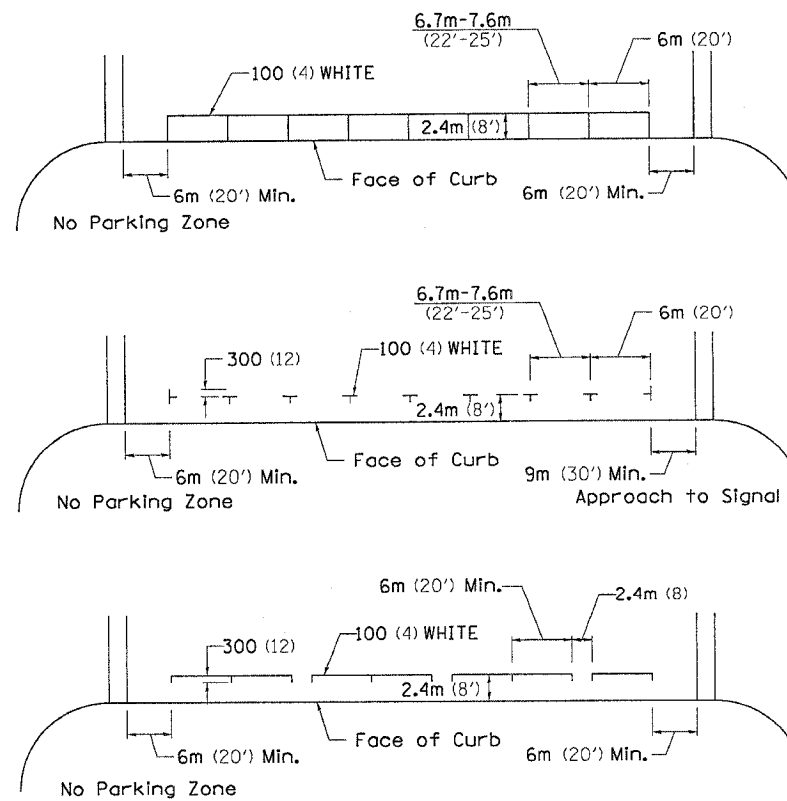
MEDIAN PAVEMENT MARKING



TYPICAL ISLAND OFFSET SHOULDER WIDTH

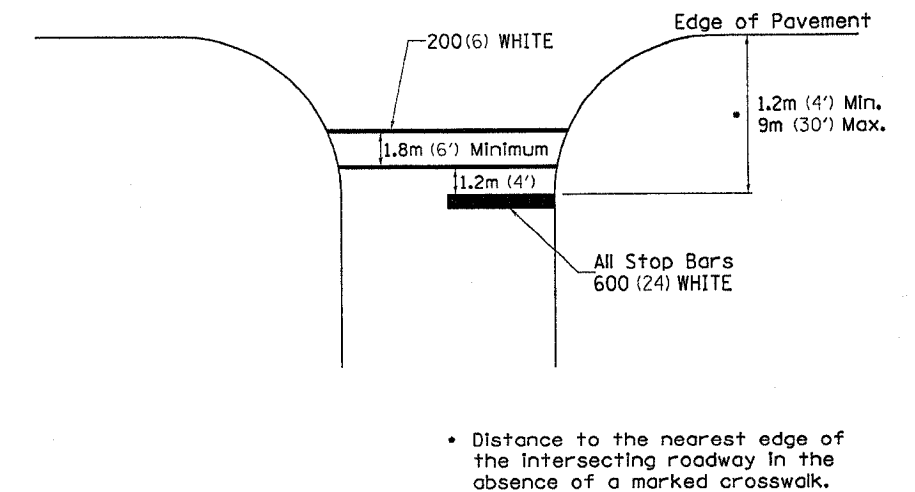


TYPICAL PARKING SPACING



•• ALL DIMENSIONS ARE IN MILLIMETERS (INCHES) UNLESS OTHERWISE NOTED.

STANDARD CROSSWALK MARKING
See Schedules for Locations



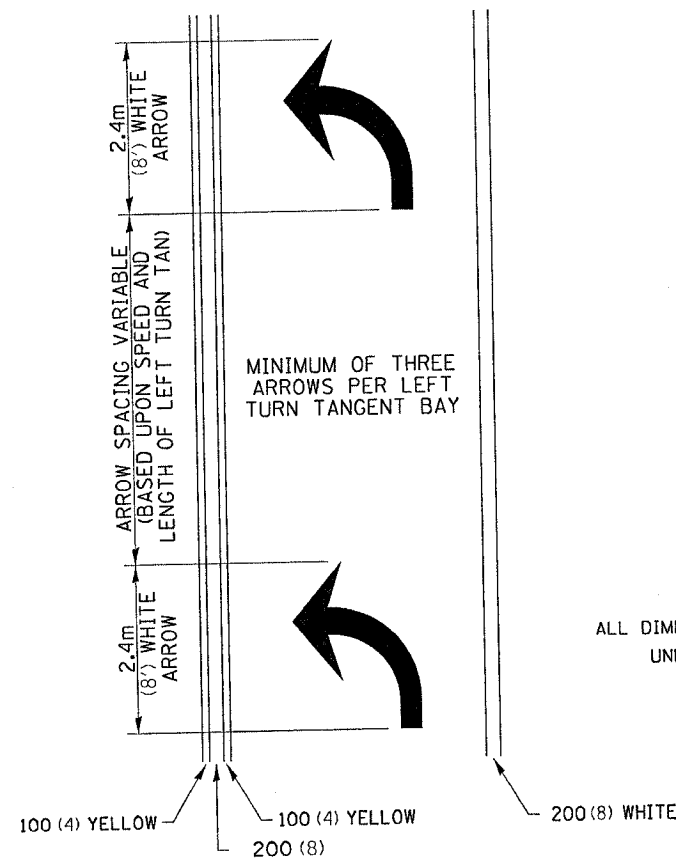
• Distance to the nearest edge of the intersecting roadway in the absence of a marked crosswalk.

PLOT DATE = Fri, Sep 02, 14:29:51, 2005
 FILE NAME = c:\pvc\meta\207285\207285.dgn
 PLOT SCALE = 50.0000 / 1 IN.
 REFERENCE = #REF#

F.A.U. RTE.	SECTION	COUNTY	TOTAL SHEETS	SHEET NO.
5862	2BR-1	HENRY	26	21
STA.		TO STA.		
FED. ROAD DIST. NO.		ILLINOIS		FED. AID PROJECT

TYPICAL PAVEMENT MARKINGS

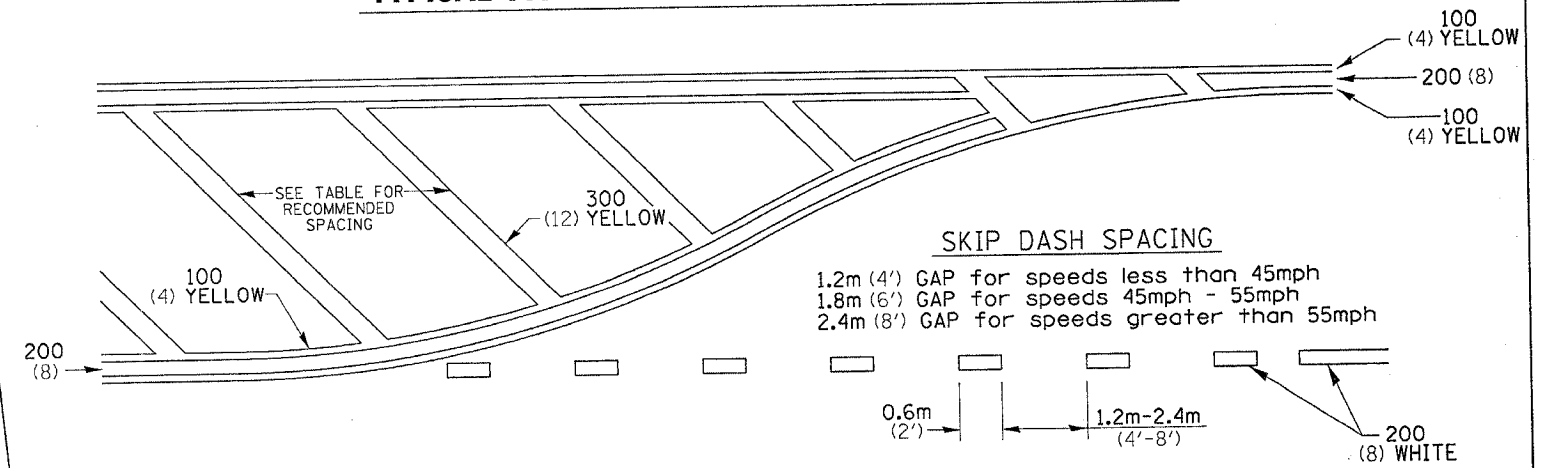
ARROW LAYOUT



- ◀ ONE-WAY AMBER MARKER
- △ ONE-WAY CRYSTAL MARKER
- ◆ TWO-WAY AMBER MARKER

ALL DIMENSIONS ARE IN MILLIMETERS (INCHES) UNLESS OTHERWISE NOTED.

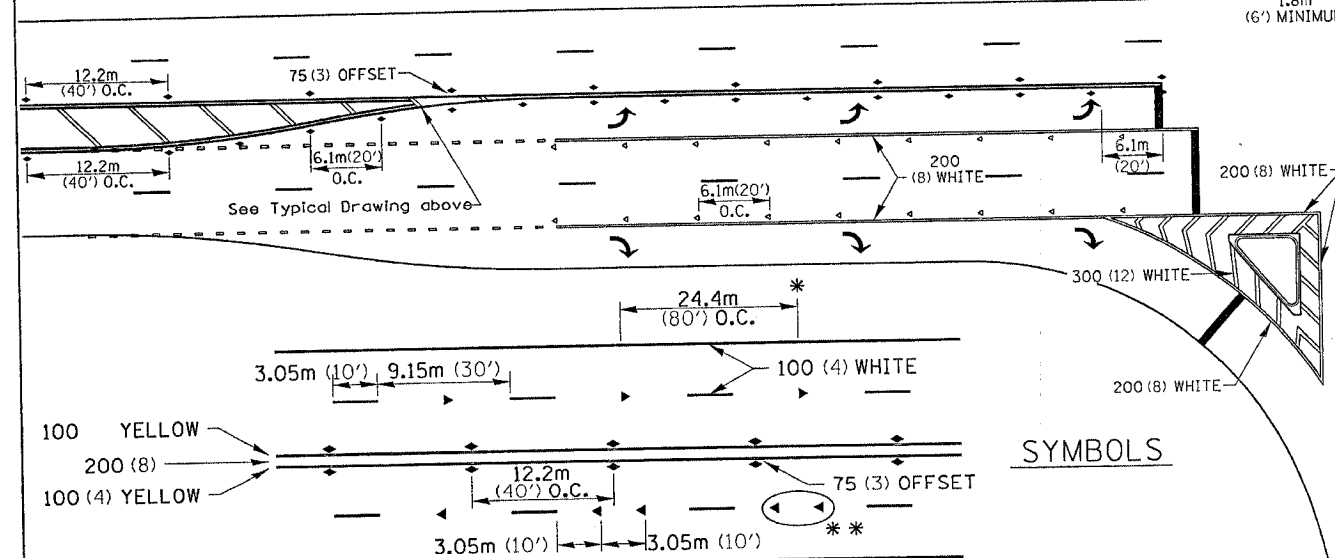
TYPICAL PAVEMENT MARKING FOR FLUSH MEDIAN



RECOMMENDED SPACING BETWEEN DIAGONALS (IN FEET)

Speed Limit Range	Continuous Median Area	Intersection Channelization	Objects (Islands)
less than 50Km/H (30MPH)	15.3m (50')	4.53m (15')	3.05m (10')
50-60Km/H (30-40MPH)	22.9m (75')	6.1m (20')	4.53m (15')
70Km/H (45MPH) & over	22.9m (75')	9.05m (30')	6.1m (20')

NOTE: If the spacing recommended in the Table does not permit at least five diagonal lines in the area being marked, the spacing from the next lowest speed range should be used. The recommended spacing is measured parallel to the pavement center line.

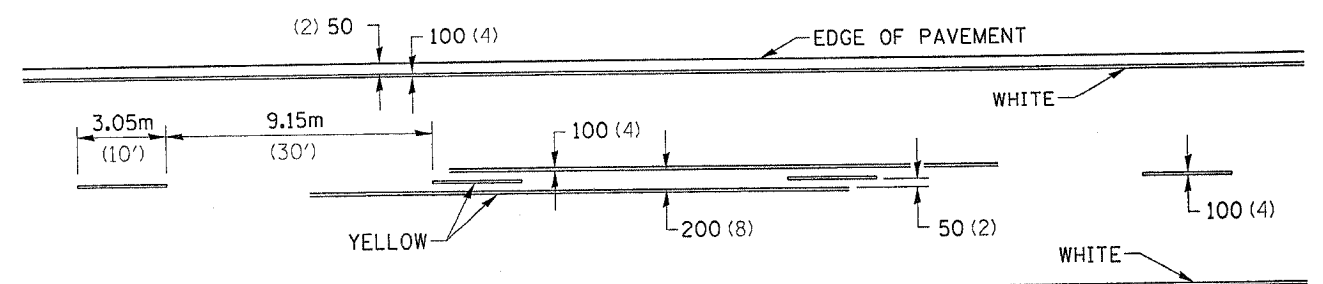


SYMBOLS

- * REDUCE TO 12.2m (40') O.C. ON CURVES WHERE ADVISORY SPEEDS ARE 15Km/H (10MPH) LOWER THAN POSTED SPEEDS.
- ** USE DOUBLE MARKERS WHEN ADT ≥ 25,000

MULTI-LANE / UNDIVIDED

TYPICAL PAVEMENT MARKING FOR TWO LANE SECTION - NO PASSING ZONES



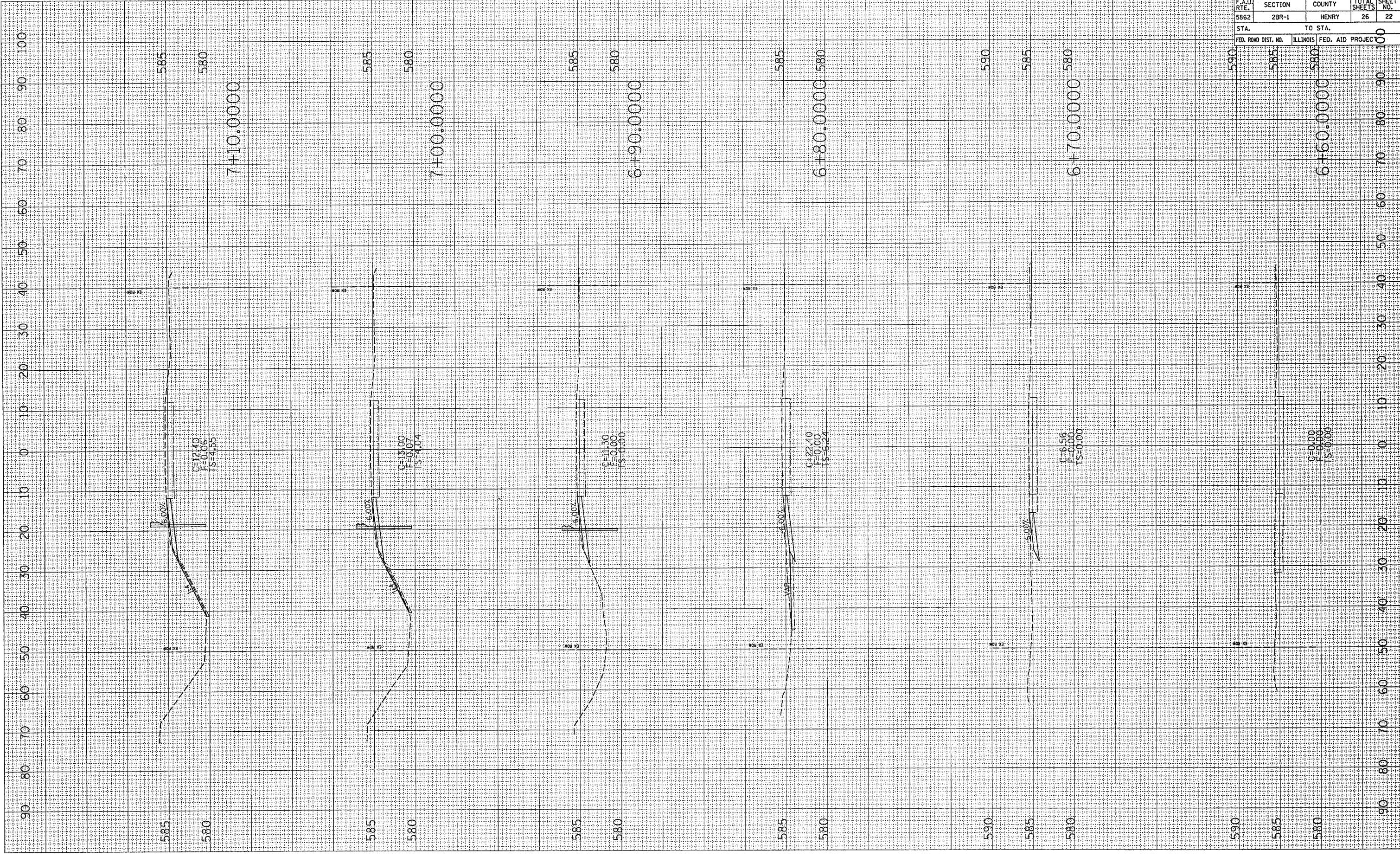
PLOT DATE = Fri Sep 02 14:35:58 2005
 FILE NAME = c:\pav\pav\pav27261\ref\ref27261.dgn
 REFERENCE = REF27261.dwg
 REFERENCE = REF27261.dwg

PLOT DATE = Fri Sep 02 14:52:59 2005
 FILE NAME = c:\pms\pms\c\287265\087265.dwg
 USER NAME = mgj111

ORIGINAL SURVEY PLOTTED
 SURVEY PLOTTED
 NOTE BOOK NO. _____
 TEMPLATE _____
 AREAS CHECKED _____

FINAL SURVEY PLOTTED
 SURVEY PLOTTED
 NOTE BOOK NO. _____
 AREAS CHECKED _____

BY _____
 DATE _____



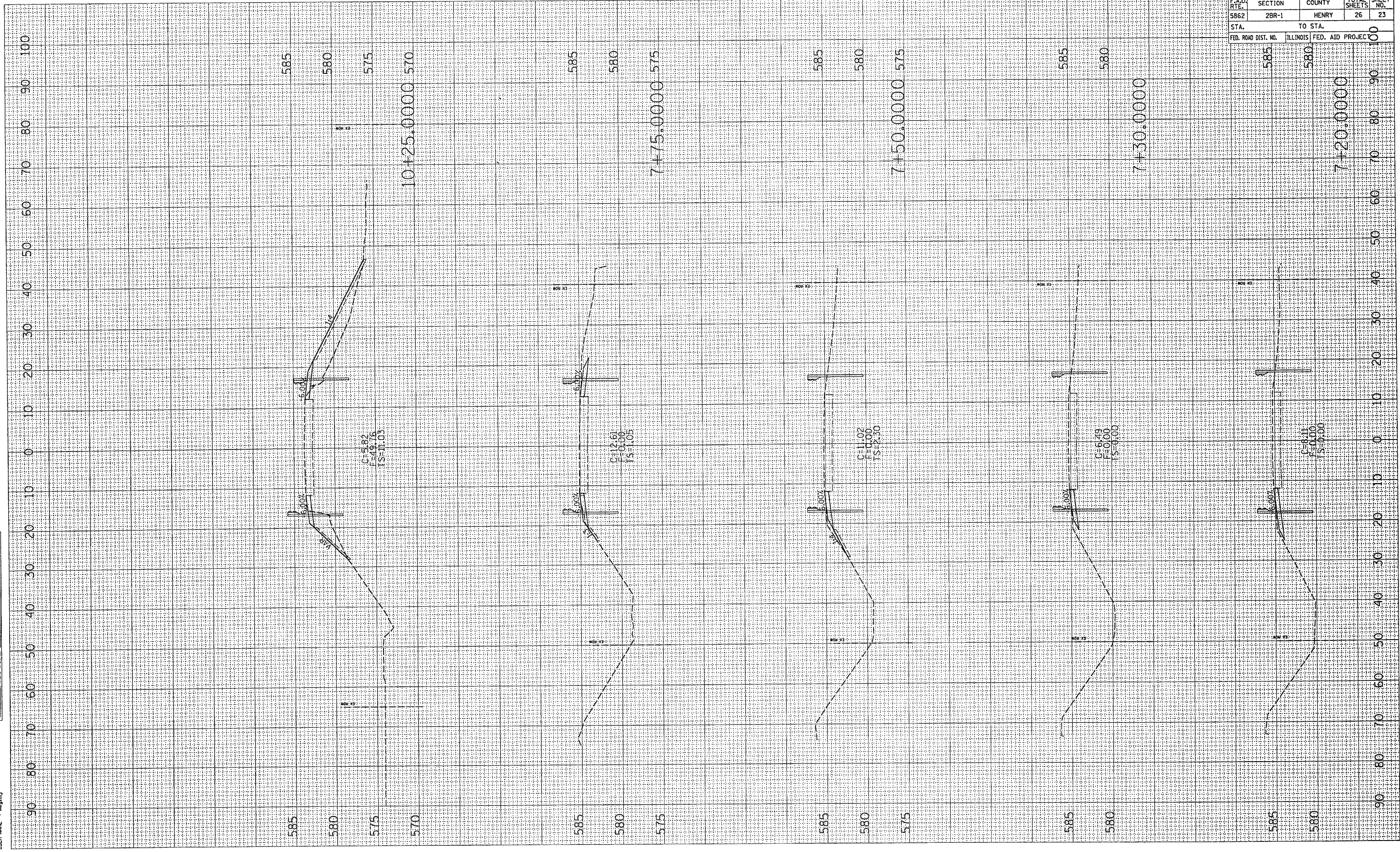
CONTRACT NO. 64B10				
F.A.U. RTE.	SECTION	COUNTY	TOTAL SHEETS	SHEET NO.
5862	2BR-1	HENRY	26	22
STA.		TO STA.		
FED. ROAD DIST. NO.	ILLINOIS	FED. AID PROJECT		

PLOT DATE = Fri, Sep 02 14:52:33 2005
PLOT SCALE = 1/8" = 20'
USER NAME = mgjllj

ORIGINAL SURVEYED SURVEY PLOTTED SURVEY PLOTTED SURVEY PLOTTED
NOTE BOOK NO. AREAS CHECKED

FINAL SURVEY SURVEYED SURVEY PLOTTED SURVEY PLOTTED SURVEY PLOTTED
NOTE BOOK NO. AREAS CHECKED

BY DATE



C=5.82
E=0.75
FS=11.03

C=12.61
E=0.00
FS=1.05

C=11.02
E=0.00
FS=2.30

C=5.78
E=0.00
FS=0.00

C=8.11
E=0.00
FS=0.00

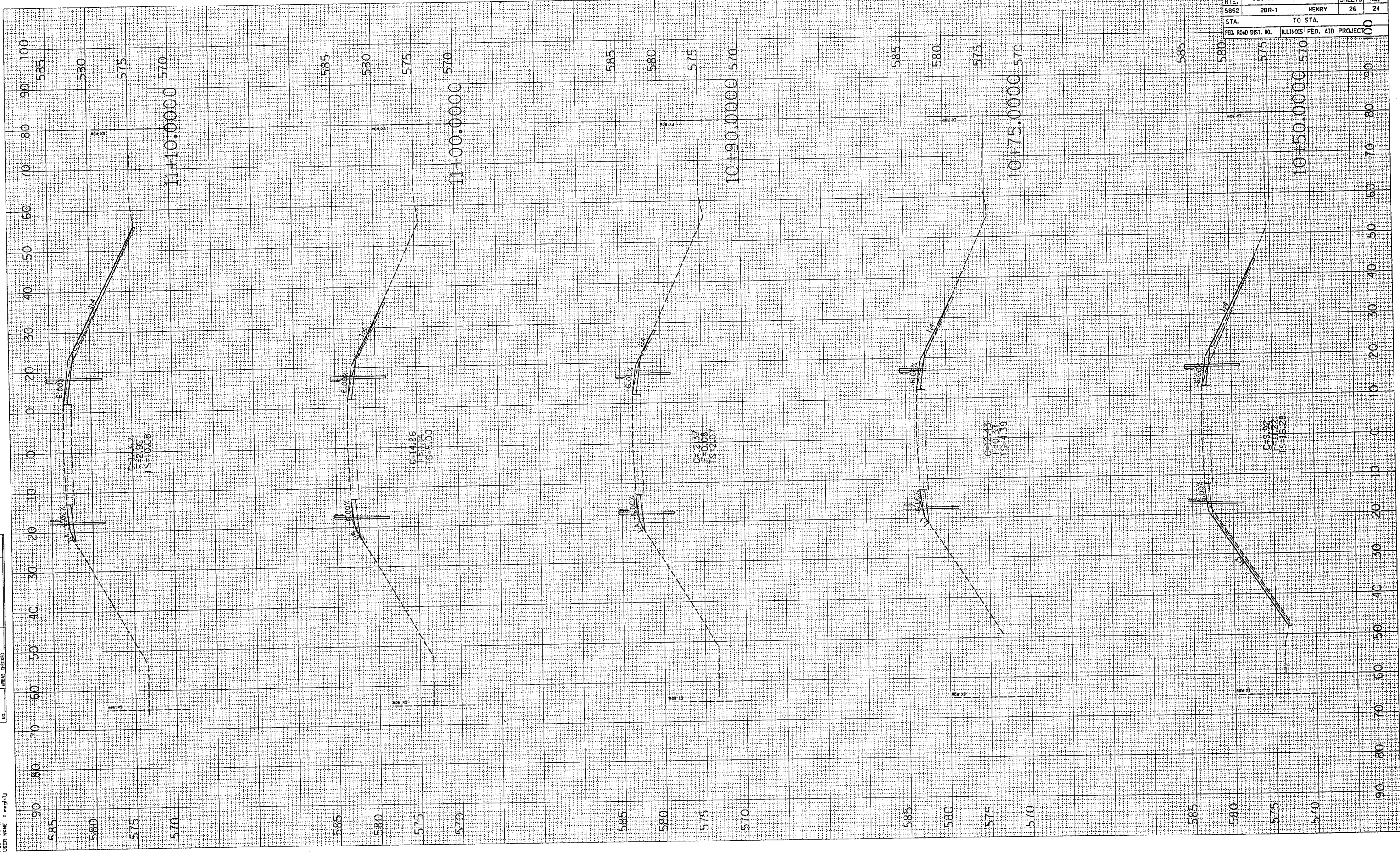
F.A.U. RTE.	SECTION	COUNTY	TOTAL SHEETS	SHEET NO.
5862	2BR-1	HENRY	26	23
STA. TO STA.		FED. ROAD DIST. NO. ILLINOIS FED. AID PROJECT NO.		
585 580		7+20.0000		

F.A.U. RTE.	SECTION	COUNTY	TOTAL SHEETS	SHEET NO.
5862	2BR-1	HENRY	26	24
STA.		TO STA.		
FED. ROAD DIST. NO.		ILLINOIS	FED. AID PROJEC	

FINAL SURVEY	BY	DATE
SURVEYED		
NOTE BOOK		
AREAS CHECKED		

ORIGINAL SURVEY	BY	DATE
SURVEYED		
NOTE BOOK		
AREAS CHECKED		

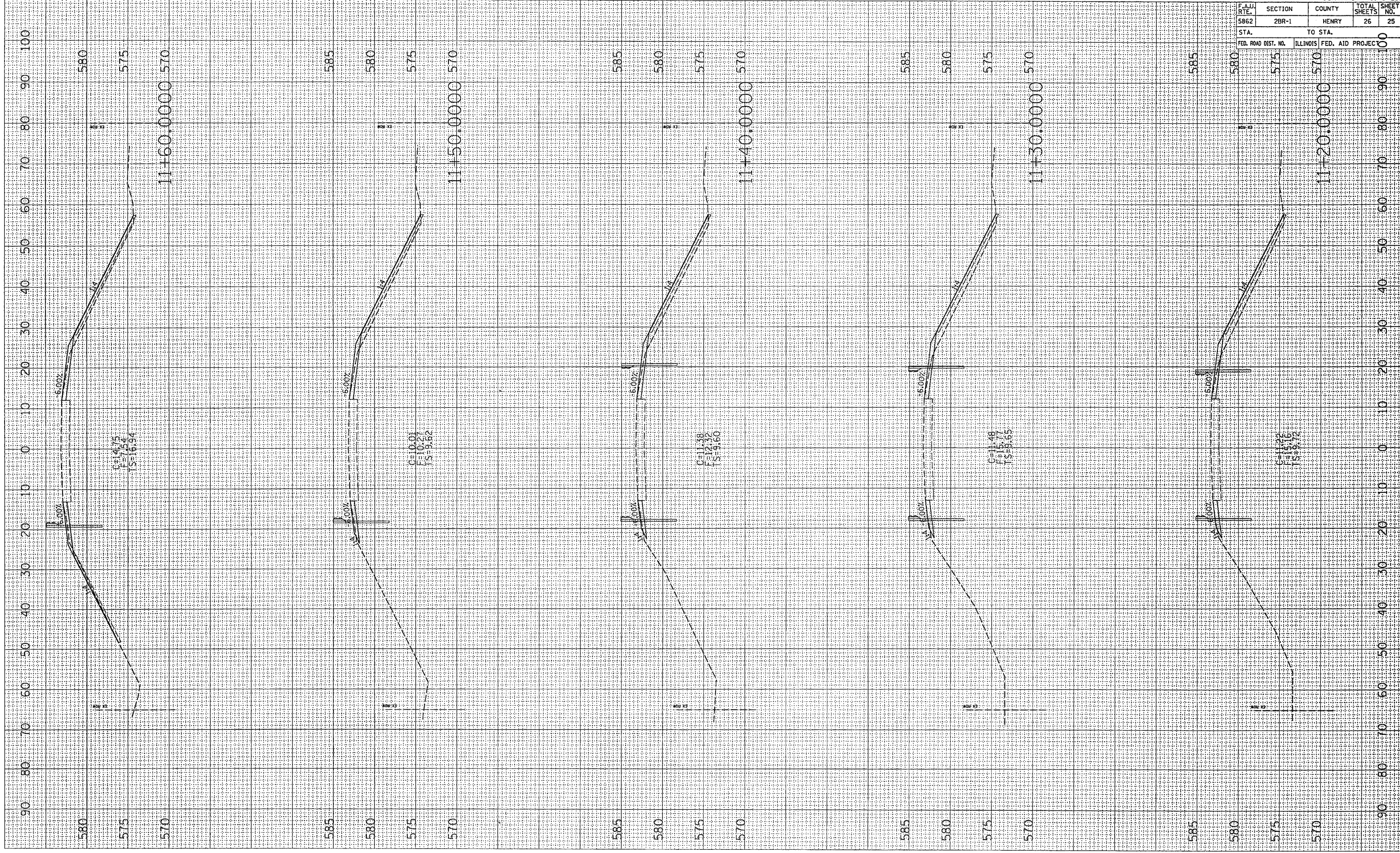
PLOT DATE = Fri Sep 02 14:52:33 2005
 FILE NAME = c:\pwc\pwc15\207285\207285\107285.dgn
 PLOT SCALE = 18.8898" / IN.
 USER NAME = mgjllj



PLOT DATE = Fri Sep 02 14:52:48 2005
 FILE NAME = c:\pcc\pcc\pcc\207285\207285.dwg
 PLOT SCALE = 10.0000 / IN.
 USER NAME = mgj111

ORIGINAL SURVEY PLOTTED BY DATE
 NOTE BOOK TEMPLATE AREAS CHECKED

FINAL SURVEY PLOTTED BY DATE
 NOTE BOOK TEMPLATE AREAS CHECKED



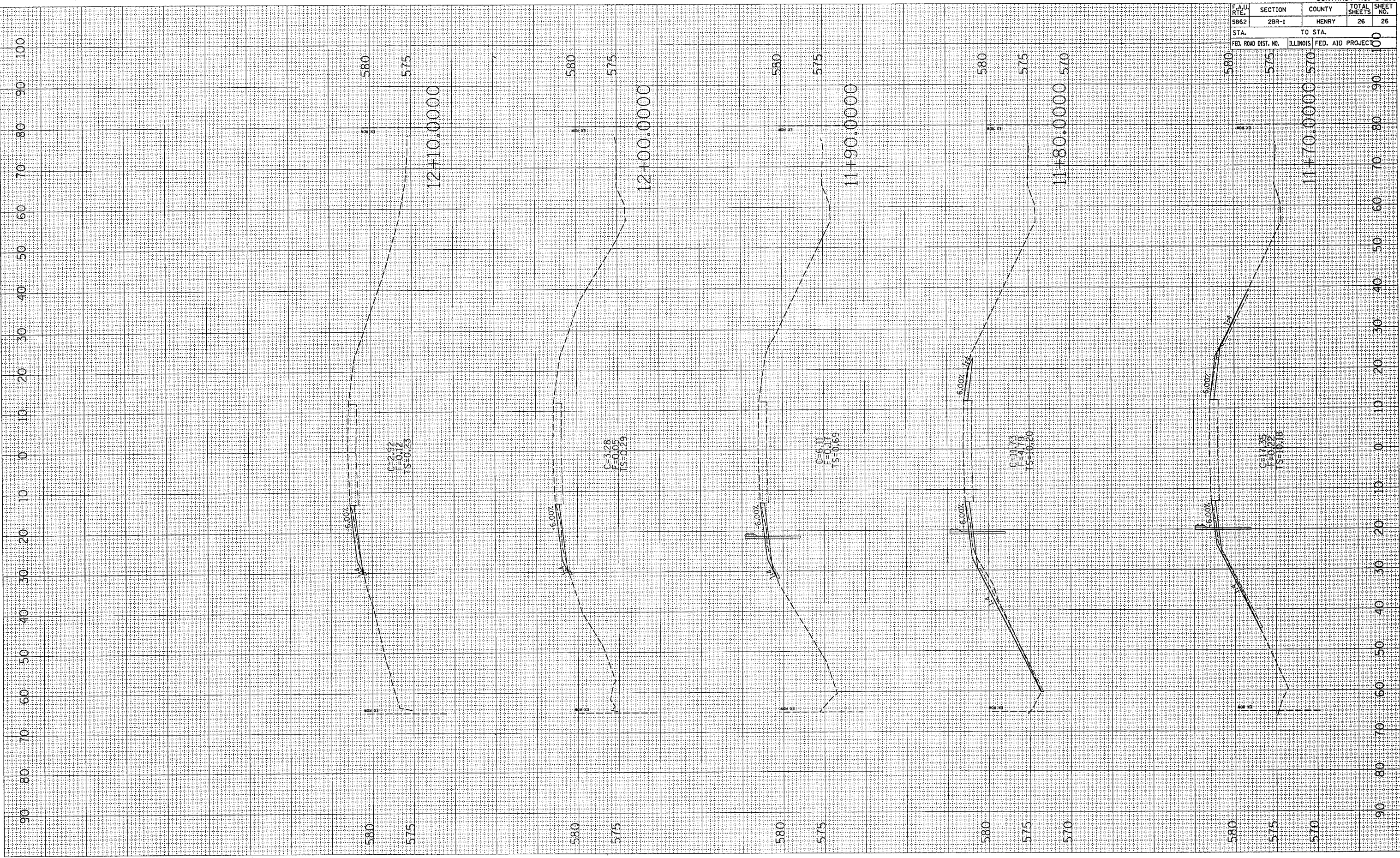
CONTRACT NO. 64B10				
F.A.U. RTE.	SECTION	COUNTY	TOTAL SHEETS	SHEET NO.
5862	2BR-1	HENRY	26	25
STA. TO STA.		ILLINOIS FED. AID PROJECT		
570 575 580 585		11+20.0000 570		

PLOT DATE = F:\1_Shp B2 145248 2005
 PLOT SCALE = 1/4" = 100'-0"
 USER NAME = megalu

ORIGINAL SURVEY PLOTTED SURVEY
 NOTE BOOK REPLICATE
 AREAS CHECKED

FINAL SURVEY SURVEYED SURVEY
 NOTE BOOK REPLICATE
 AREAS CHECKED

BY DATE



CONTRACT NO. 64B10				
F.A.U. RTE.	SECTION	COUNTY	TOTAL SHEETS	SHEET NO.
5862	2BR-1	HENRY	26	26
STA. TO STA.		ILLINOIS FED. AID PROJECT		