

STATE OF ILLINOIS
DEPARTMENT OF TRANSPORTATION
DIVISION OF HIGHWAYS
PLANS FOR PROPOSED
FEDERAL AID HIGHWAY
F.A.P. 627 (IL-71)
SECTION (1)BR
PROJECT ACBRF-0627(010)
LaSALLE COUNTY
C93-133-03

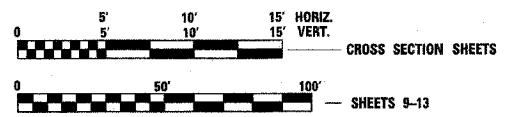
ROUTE NO.	SECTION	COUNTY	TOTAL SHEETS	SHEET NO.
F.A.P. 627	1 BR	LaSALLE	46	1
ILLINOIS				

P 93-040-00
D 93-012-03
CONTRACT NO. 66364

INDEX OF SHEETS	
SHEET NO.	TITLE
1.	COVER SHEET
2.	GENERAL NOTES & STANDARDS
3.-4.	SUMMARY OF QUANTITIES
5.-6.	SCHEDULES
7.	TYPICAL SECTIONS
8.	ENTRANCE DETAILS
9.-10.	MAINTENANCE OF TRAFFIC
11.	PLAN AND PROFILE SHEET
12.	EROSION CONTROL PLAN
13.	GUARDRAIL AND SHOULDER WIDENING DETAIL
14.	APPROACH PAVEMENT DETAILS
15.-34.	S.N. 050-0244 BRIDGE PLANS
35.-40.	EXISTING BRIDGE PLANS
41.-42.	MISCELLANEOUS DETAILS
43.	RESURFACING DETAILS
44.-46.	STATION CROSS SECTIONS



2004 ADT = 1,275
P.C. = 94.8% S.U. = 4.2% M.U. = 1.0%
DESIGN DESIGNATION - RURAL MINOR ARTERIAL



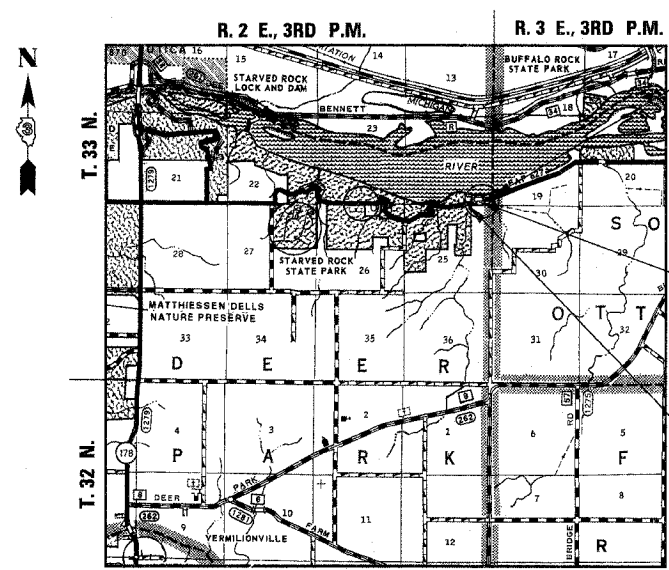
FULL SIZE PLANS HAVE BEEN PREPARED USING STANDARD ENGINEERING SCALES, REDUCED SIZED PLANS WILL NOT CONFORM TO STANDARD SCALES, IN MAKING MEASUREMENTS ON REDUCED PLANS, THE ABOVE SCALES MAY BE USED.

J.U.L.I.E.
JOINT UTILITY LOCATION INFORMATION FOR EXCAVATION
1-800-892-0123

PROJECT ENGR.: DAVE BROVIK UNIT CHIEF: SCOTT FERGUSON
DISTRICT 3 TELEPHONE # (815) 434-6131

CONTRACT NO. 66364

REMOVAL AND REPLACEMENT OF S.N. 050-0142
CARRYING IL 71 OVER UNNAMED STREAM.



LOCATION PLAN
GROSS LENGTH OF SECTION = 747.34 FEET = 0.142 MILE
NET LENGTH OF SECTION = 747.34 FEET = 0.142 MILE

SCALE IN MILES

IMPROVEMENT ENDS
STA. 18+00.00

STA. 14+08 - SPECIAL BRIDGE DESIGN
TWO SPAN COMPOSITE 24" WIDE FLANGE
BEAM BRIDGE ON INTEGRAL ABUTMENTS
AND PILE BENT PIER ON STEEL H-PILES
SET IN ROCK. SKEW=20°
80'-0" BK.-BK. ABUTS, 33'-0" ROADWAY
PROPOSED S.N. 050-0244

IMPROVEMENT BEGINS
STA. 10+52.66



Gary J. Cartwright 7-22-05
ILLINOIS PROFESSIONAL NO. 43406

EXPIRES 11-30-05

4440 ASH GROVE
SPRINGFIELD, IL 62707
(217) 793-8900
oasinc@famvid.com

OZYURT AND STONE, INC.
CONSULTING ENGINEERS

STATE OF ILLINOIS
DEPARTMENT OF TRANSPORTATION
DIVISION OF HIGHWAYS

SUBMITTED SEP 6 20 05
[Signature]
DEPUTY DIRECTOR OF HIGHWAYS, REGION ENGINEER

October 14, 20 05
Mike Hine
ENGINEER OF DESIGN AND ENVIRONMENT

October 14, 20 05
Eric S. Hume
DEPUTY DIRECTOR OF HIGHWAYS, CHIEF ENGINEER

PRINTED BY THE AUTHORITY
OF THE STATE OF ILLINOIS