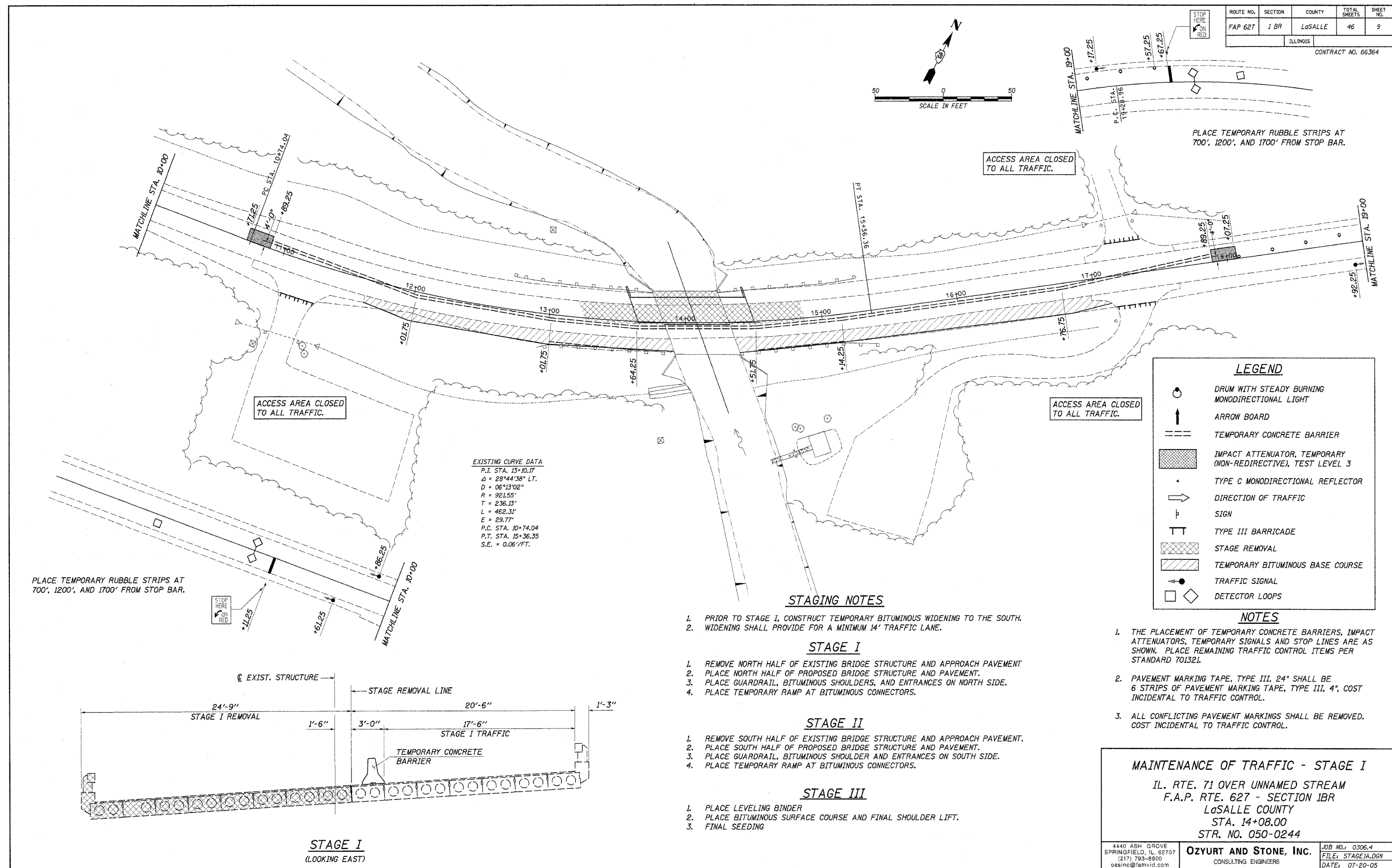


ROUTE NO.	SECTION	COUNTY	TOTAL SHEETS	SHEET NO.
FAP 627	1 BR	LaSALLE	46	9
ILLINOIS				

CONTRACT NO. 66364



EXISTING CURVE DATA
 P.I. STA. 13+10.17
 $\Delta = 28^{\circ}44'38''$ LT.
 $D = 06^{\circ}13'02''$
 $R = 921.55'$
 $T = 236.13'$
 $L = 462.31'$
 $E = 29.77'$
 P.C. STA. 10+74.04
 P.T. STA. 15+36.35
 $S.E. = 0.06'/FT.$

LEGEND	
	DRUM WITH STEADY BURNING MONODIRECTIONAL LIGHT
	ARROW BOARD
	TEMPORARY CONCRETE BARRIER
	IMPACT ATTENUATOR, TEMPORARY (NON-REDIRECTIVE), TEST LEVEL 3
	TYPE C MONODIRECTIONAL REFLECTOR
	DIRECTION OF TRAFFIC
	SIGN
	TYPE III BARRICADE
	STAGE REMOVAL
	TEMPORARY BITUMINOUS BASE COURSE
	TRAFFIC SIGNAL
	DETECTOR LOOPS

STAGING NOTES

1. PRIOR TO STAGE I, CONSTRUCT TEMPORARY BITUMINOUS WIDENING TO THE SOUTH.
2. WIDENING SHALL PROVIDE FOR A MINIMUM 14' TRAFFIC LANE.

STAGE I

1. REMOVE NORTH HALF OF EXISTING BRIDGE STRUCTURE AND APPROACH PAVEMENT
2. PLACE NORTH HALF OF PROPOSED BRIDGE STRUCTURE AND PAVEMENT.
3. PLACE GUARDRAIL, BITUMINOUS SHOULDERS, AND ENTRANCES ON NORTH SIDE.
4. PLACE TEMPORARY RAMP AT BITUMINOUS CONNECTORS.

STAGE II

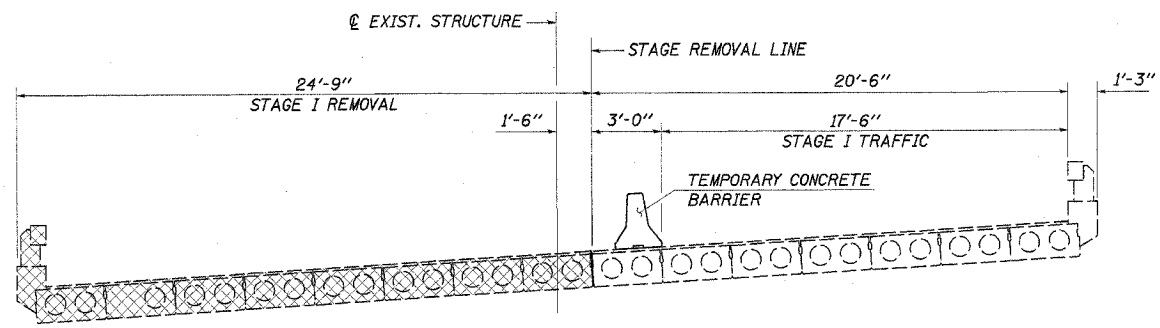
1. REMOVE SOUTH HALF OF EXISTING BRIDGE STRUCTURE AND APPROACH PAVEMENT.
2. PLACE SOUTH HALF OF PROPOSED BRIDGE STRUCTURE AND PAVEMENT.
3. PLACE GUARDRAIL, BITUMINOUS SHOULDER AND ENTRANCES ON SOUTH SIDE.
4. PLACE TEMPORARY RAMP AT BITUMINOUS CONNECTORS.

STAGE III

1. PLACE LEVELING BINDER
2. PLACE BITUMINOUS SURFACE COURSE AND FINAL SHOULDER LIFT.
3. FINAL SEEDING

NOTES

1. THE PLACEMENT OF TEMPORARY CONCRETE BARRIERS, IMPACT ATTENUATORS, TEMPORARY SIGNALS AND STOP LINES ARE AS SHOWN. PLACE REMAINING TRAFFIC CONTROL ITEMS PER STANDARD 70132L.
2. PAVEMENT MARKING TAPE, TYPE III, 24" SHALL BE 6 STRIPS OF PAVEMENT MARKING TAPE, TYPE III, 4", COST INCIDENTAL TO TRAFFIC CONTROL.
3. ALL CONFLICTING PAVEMENT MARKINGS SHALL BE REMOVED. COST INCIDENTAL TO TRAFFIC CONTROL.



STAGE I
(LOOKING EAST)

MAINTENANCE OF TRAFFIC - STAGE I
 IL. RTE. 71 OVER UNNAMED STREAM
 F.A.P. RTE. 627 - SECTION 1BR
 LaSALLE COUNTY
 STA. 14+08.00
 STR. NO. 050-0244

4440 ASH GROVE SPRINGFIELD, IL 62707 (217) 793-8500 oasinc@famvid.com	OZYURT AND STONE, INC. CONSULTING ENGINEERS	JOB NO.: 0306.4 FILE: STAGE1A.DGN DATE: 07-20-05
--	---	--