

STATE OF ILLINOIS
DEPARTMENT OF TRANSPORTATION

Bench Mark:

Chiseled square on S.E. wingwall of Bridge
S.N. 050-0142, Elev. 469.31

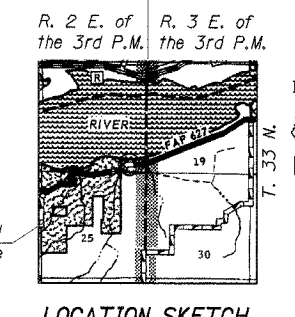
Existing Structure:

S.N. 050-0142 built as F.A. Rte. 8, Sec. 1-BR
in 1970 at Sta. 14+08. A single span, precast
prestressed concrete deck beams on closed
concrete abutments, 47'-8" Bk. to Bk. Abutments
and 46'-6" O. to O. deck. Structure shall be
removed and replaced using stage construction.

No salvage.

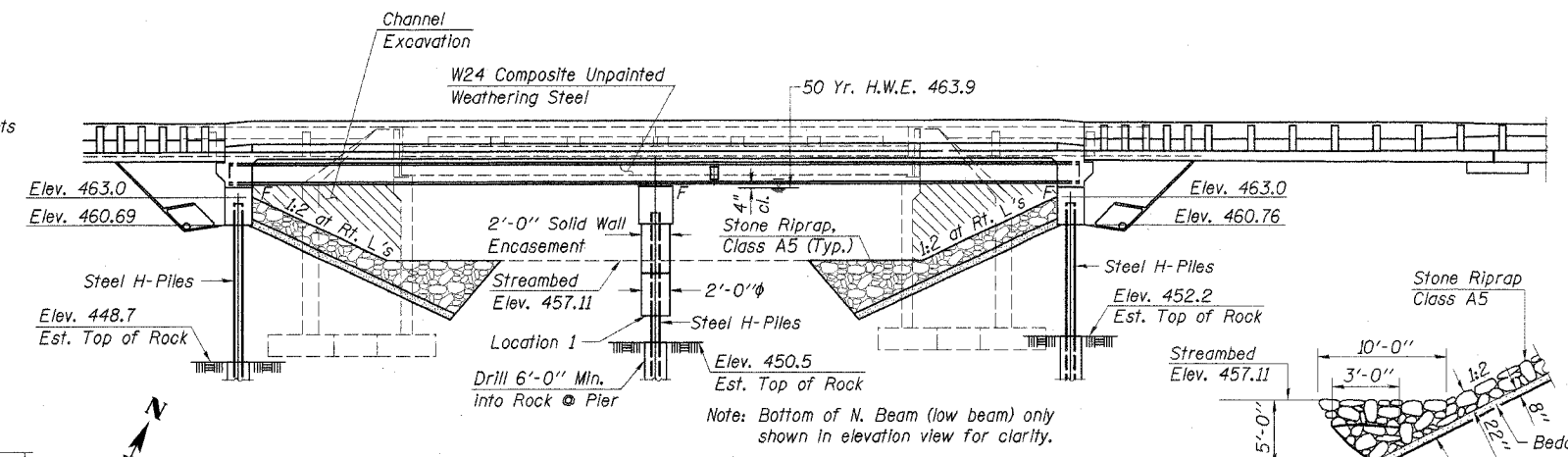
ROUTE NO.	SECTION	COUNTY	TOTAL SHEETS	SHEET NO.
F.A.P. 627	1BR	LaSALLE	46	15

CONTRACT NO. 66364
Sheet 1 of 20



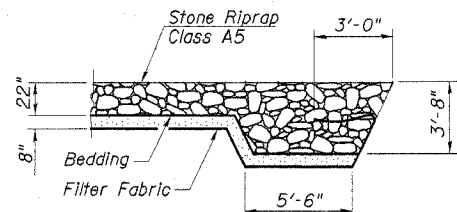
INDEX OF SHEETS

1. General Plan and Elevation
2. General Notes, Total Bill of Material & Miscellaneous Details
3. Stage Construction Details
- 4.-5. Top of Slab Elevations
- 6.-8. Superstructure Details
- 9.-10. Structural Steel Plan and Details
11. Anchor Bolt Details
- 12.-14. Abutment Details
15. Pier Details
16. Bar Splicer Assembly Details
17. Temporary Concrete Barrier
- 18.-19. Soil Boring & Rock Core Log
20. Cantilever Forming Bracket Details

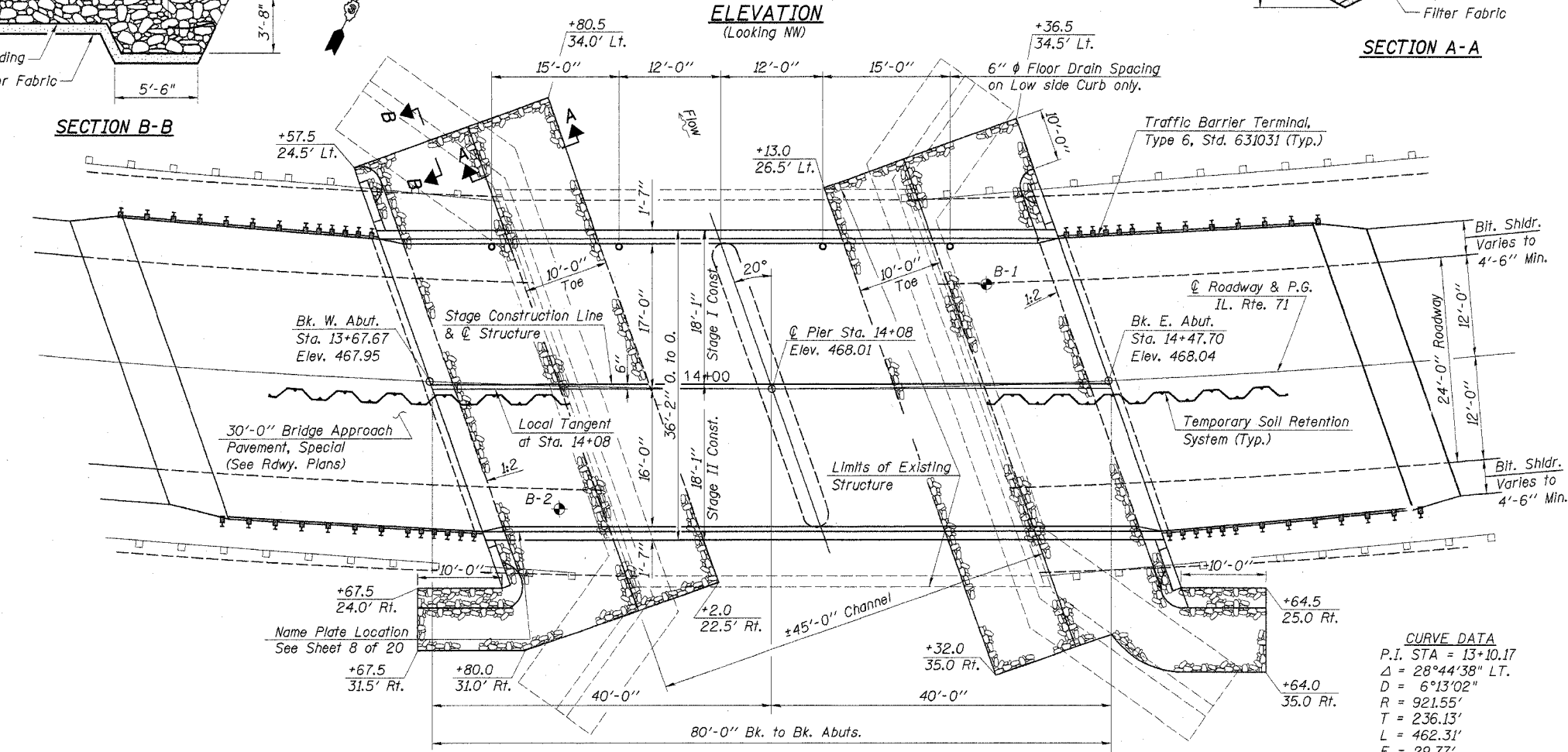


Proposed Structure

LOCATION SKETCH



SECTION B-B



PLAN

SEISMIC DATA

Seismic Performance Category (SPC) = A
Bedrock Acceleration Coefficient (A) = 0.038 g
Site Coefficient (S) = 1.0

DESIGN SPECIFICATIONS

2002 AASHTO

DESIGN STRESSES

Field Units:
f'c = 3,500 psi (Sub. & Super)
fy = 60,000 psi (Reinf.)
fy = 50,000 psi AASHTO M270 GR 50W
Structural Steel

LOADING HS20-44

Allow 50 lbs/Sq. Ft. for future wearing surface

PROFILE GRADE

Along @ Roadway

WATERWAY INFORMATION

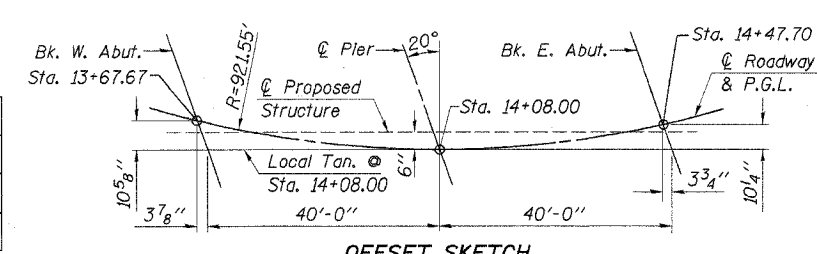
Drainage Area = 5.51 Sq. Mi. Low Grade Elev. 465.87 @ Sta. 4+95.73

Flood	Freq. Yr.	Q C.F.S.	Opening Sq. Ft.		Nat. H.W.E.	Head - Ft.		Headwater El.	
			Exist.	Prop.		Exist.	Prop.	Exist.	Prop.
Design	50	1917	276	336	463.9	1.1	0.8	465.0	464.7
Base	100	2206	278	338	463.9	1.6	1.1	465.5	465.0
Overtopping	-	-	-	-	-	-	-	-	-
Max. Calc.	500	2893	281	342	464.0	3.8	1.5	467.8	465.5

CURVE DATA

P.I. STA = 13+10.17
Δ = 28°44'38" LT.
D = 6°13'02"
R = 921.55'
T = 236.13'
L = 462.31'
E = 29.77'
P.C. STA. 10+74.04
P.T. STA. 15+36.35
S.E. = 0.06'/ft.

DESIGNED	P.S.L.
CHECKED	A.R.K. & F.J.S.
DRAWN	K.T.R.
CHECKED	P.S.L. & A.R.K.



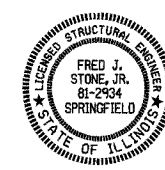
OFFSET SKETCH

APPROVED
FOR STRUCTURAL ADEQUACY ONLY

Paul E. Adams
ENGINEER OF BRIDGES AND STRUCTURES

"I certify that to the best of my knowledge, information and belief, this bridge design is structurally adequate for the design loading shown on the plans. The design is an economical one for the style of structure and complies with requirements of the current 'AASHTO Standard Specifications for Highway Bridges'."

Fred J. Stone Jr. (7-22-05)
ILLINOIS STRUCTURAL NO. 2934 (Expires 11/30/06)



GENERAL PLAN & ELEVATION

IL. RTE. 71 OVER UNNAMED STREAM
F.A.P. ROUTE 627 - SECTION 1BR
LaSALLE COUNTY
STA. 14+08.00
STR. NO. 050-0244

4440 ASH GROVE
SPRINGFIELD, IL 62711
(217) 793-8600
oasinc@tamvid.com

OZYURT AND STONE, INC.
CONSULTING ENGINEERS

JOB NO.: 0306.4
FILE: GPE.DGN
DATE: 08-31-04