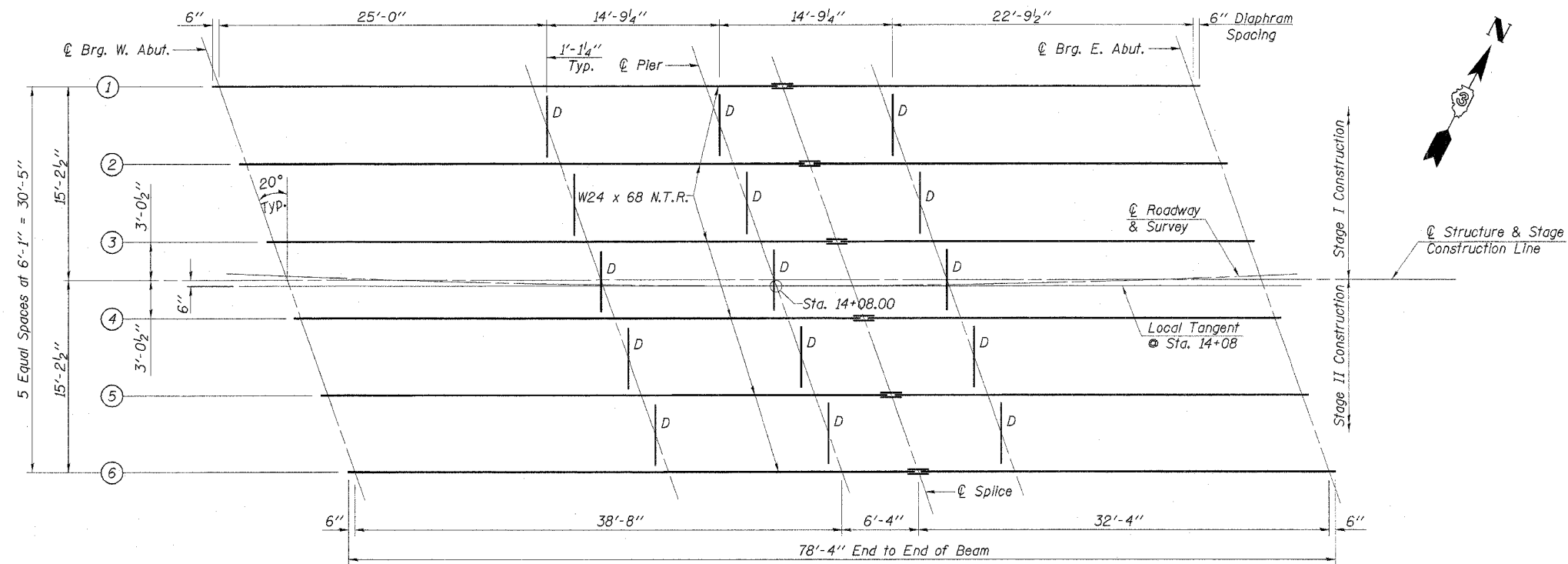
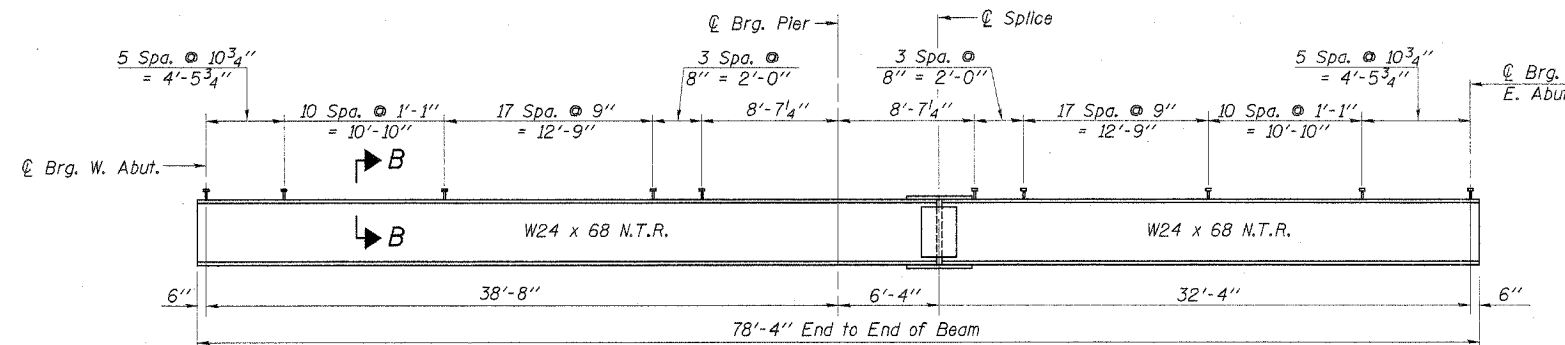


ROUTE NO.	SECTION	COUNTY	TOTAL SHEETS	SHEET NO.
F.A.P. 627	IBR	LaSALLE	46	23
ILLINOIS			CONTRACT NO. 66364	
			Sheet 9 of 20	



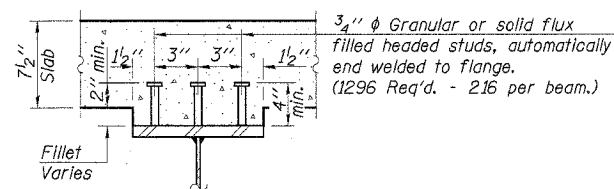
TOP OF BEAM ELEVATIONS
(For Fabrication Only)

	℄ Brg. W. Abut.	℄ Brg. Pier	℄ Splice	℄ Brg. E. Abut.
Beam 1	466.35	466.36	466.36	466.42
Beam 2	466.72	466.72	466.73	466.79
Beam 3	467.08	467.10	467.10	467.16
Beam 4	467.44	467.47	467.47	467.53
Beam 5	467.81	467.83	467.84	467.90
Beam 6	468.17	468.20	468.20	468.28

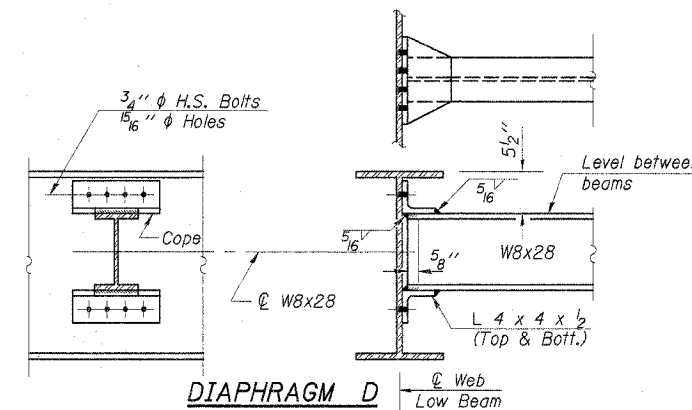


BEAM ELEVATION

Note: N.T.R. Indicates that Notch Toughness Requirements are applicable.

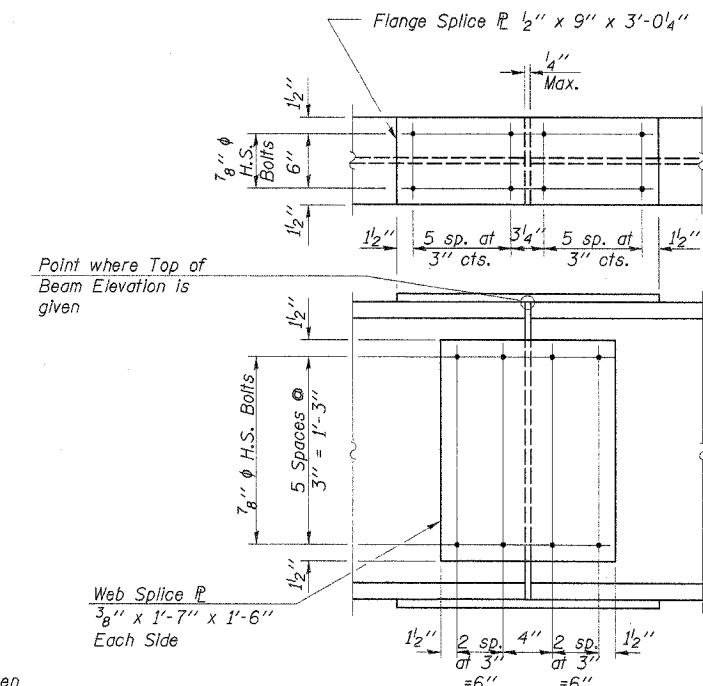


SECTION B-B
Typical Shear Connector Detail



DIAPHRAGM D
15 Required

Note: Two hardened washers shall be required over all oversize holes for diaphragms.
1/2" Vertical x 1 1/8" slotted holes in top and bottom connection angles at the south side of beam 3 only, except at the pier. Provide 5/16" R washers for the slotted holes. The bolts for the slotted holes in angles at beam 3 shall only be finger tightened prior to the deck slab pouring of Stage II Construction then fully tightened after completion of Stage II pour.



DETAIL OF SPLICE
N.T.R.

DESIGNED	P.S.L.
CHECKED	A.R.K. & F.J.S.
DRAWN	K.T.R.
CHECKED	P.S.L. & A.R.K.

STRUCTURAL STEEL

IL. RTE. 71 OVER UNNAMED STREAM
F.A.P. ROUTE 627 - SECTION IBR
LaSALLE COUNTY
STA. 14+08.00
STR. NO. 050-0244

4440 ASH GROVE SPRINGFIELD, IL 62711 (217) 993-8600 osainc@amvid.com	OZYURT AND STONE, INC. CONSULTING ENGINEERS	JOB NO.: 0306.4 FILE: STEEL0LDGN DATE: 08-31-04
---	---	---