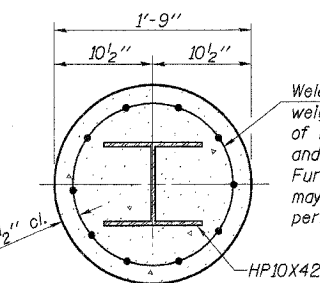
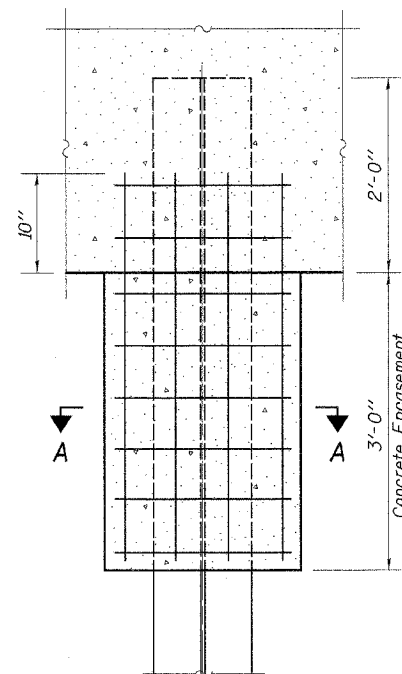
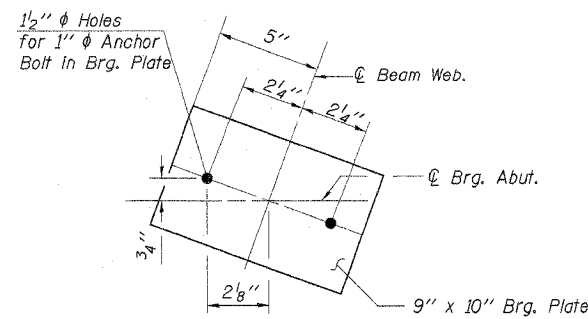


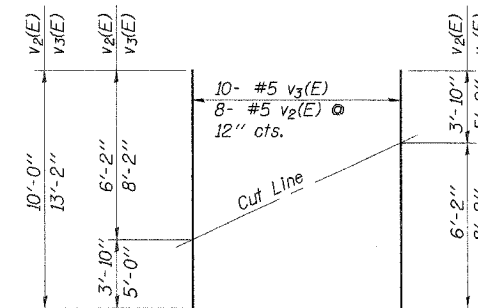
SECTION THRU ABUTMENT



SECTION A-A ENCASEMENT DETAIL



TYPICAL ANCHOR BOLT LAYOUT



FIELD CUTTING DIAGRAM

Order v₂(E) and v₃(E) bars full length. Cut as shown and use remainder of bars in opposite face.

ABUTMENT PILE DATA

Type: Steel HP10X42
Capacity: Set Piles in Rock (See Note A)
Est. Length: 20' at W. Abut.
16' at E. Abut.
No. Required: 12

Note A: Precore through the existing earth and rock as shown. Piles shall be grouted into the rock with Class SI concrete. Precored holes shall be clean at the time of placement and grouting. See Special Provisions.

WEST ABUTMENT BILL OF MATERIAL

Bar	No.	Size	Length	Shape
h(E)	4	#5	11'-10"	—
h ₁ (E)	4	#5	6'-1"	—
h ₂ (E)	6	#5	19'-0"	—
h ₃ (E)	14	#6	9'-10"	—
h ₄ (E)	18	#6	11'-10"	—
p(E)	18	#7	19'-0"	—
s ₂ (E)	36	#5	11'-7"	□
s ₃ (E)	4	#5	11'-11"	□
s ₄ (E)	35	#5	4'-2"	□
u(E)	10	#6	7'-3"	▭
v ₁ (E)	77	#5	4'-4"	—
v ₂ (E)	8	#5	10'-0"	—
v ₃ (E)	10	#5	13'-2"	—
Concrete Structures	Cu. Yd.		20.0	
Reinforcement Bars, Epoxy Coated	Pound		2,730	
Structure Excavation	Cu. Yd.		138	
Furnishing Steel Piles HP10X42	Foot		120	
Setting Piles in Rock	Each		6	
Bar Splicers	Each		13	

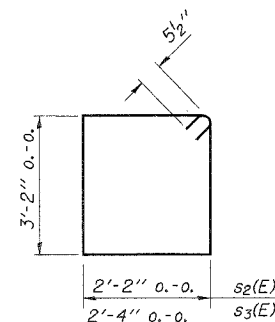
EAST ABUTMENT BILL OF MATERIAL

Bar	No.	Size	Length	Shape
h(E)	4	#5	11'-10"	—
h ₁ (E)	4	#5	6'-1"	—
h ₂ (E)	6	#5	19'-0"	—
h ₃ (E)	14	#6	9'-10"	—
h ₄ (E)	18	#6	11'-10"	—
p(E)	18	#7	19'-0"	—
s ₂ (E)	36	#5	11'-7"	□
s ₃ (E)	4	#5	11'-11"	□
s ₄ (E)	35	#5	4'-2"	□
u(E)	10	#6	7'-3"	▭
v ₁ (E)	77	#5	4'-4"	—
v ₂ (E)	8	#5	10'-0"	—
v ₃ (E)	10	#5	13'-2"	—
Concrete Structures	Cu. Yd.		20.1	
Reinforcement Bars, Epoxy Coated	Pound		2,730	
Structure Excavation	Cu. Yd.		138	
Furnishing Steel Piles HP10X42	Foot		96	
Setting Piles in Rock	Each		6	
Bar Splicers	Each		13	

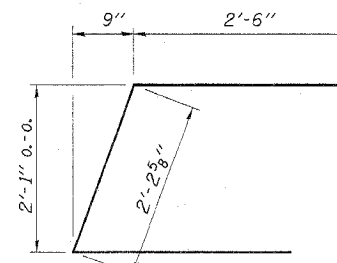
Reinforcement designated (E) shall be epoxy coated.

Notes:

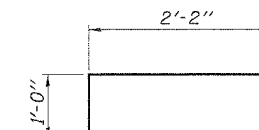
Pour steps monolithically with the cap.
Space reinforcement in cap to miss anchor bolts.



BARS s₂(E) and s₃(E)



BAR u(E)



BAR s₄(E)

DESIGNED	P.S.L.
CHECKED	A.R.K. & F.J.S.
DRAWN	K.T.R.
CHECKED	P.S.L. & A.R.K.

ABUTMENT DETAILS

IL. RTE. 71 OVER UNNAMED STREAM
F.A.P. ROUTE 627 - SECTION IBR
LaSALLE COUNTY
STA. 14+08.00
STR. NO. 050-0244

4440 ASH GROVE
SPRINGFIELD, IL 62711
(217) 793-8600
osainc@famvia.com

OZYURT AND STONE, INC.
CONSULTING ENGINEERS

JOB NO.: 0306.4
FILE: ABUT03.DGN
DATE: 08-31-04