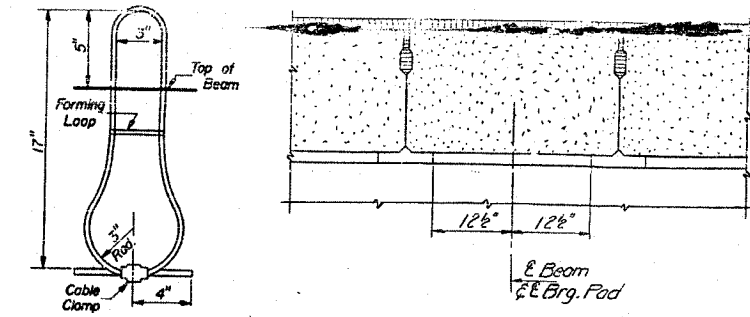
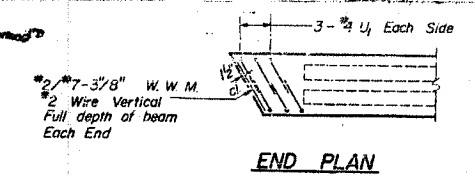
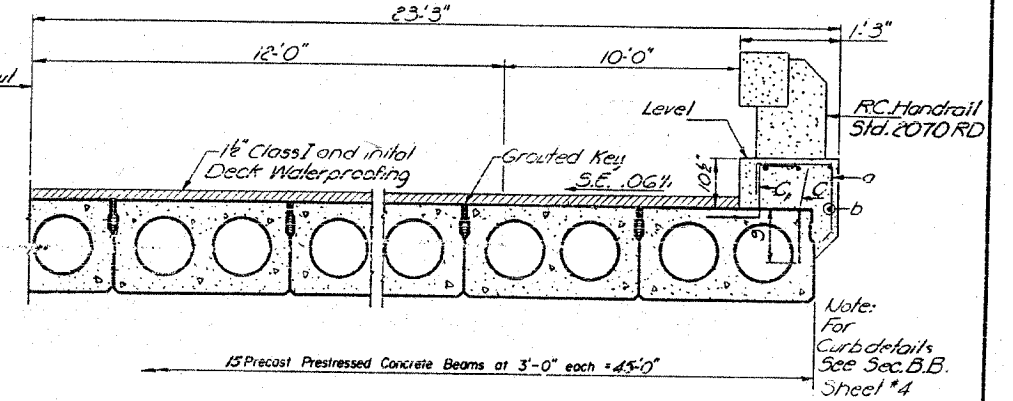
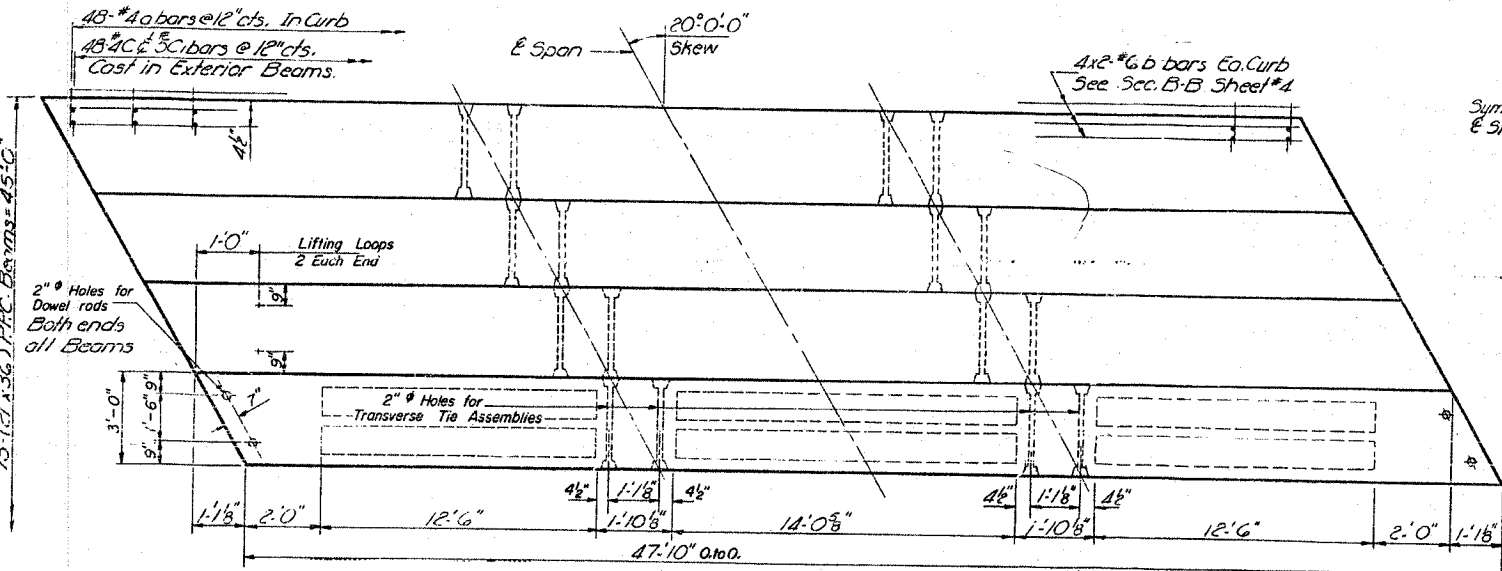
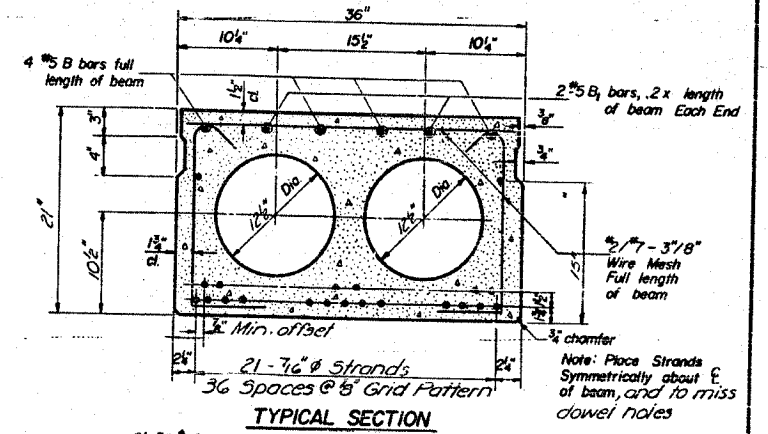
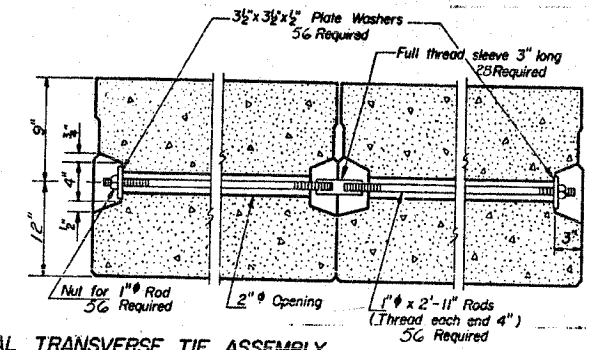
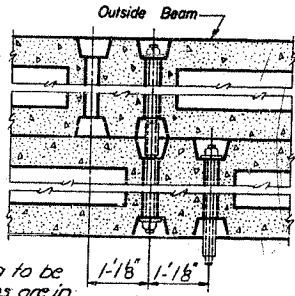
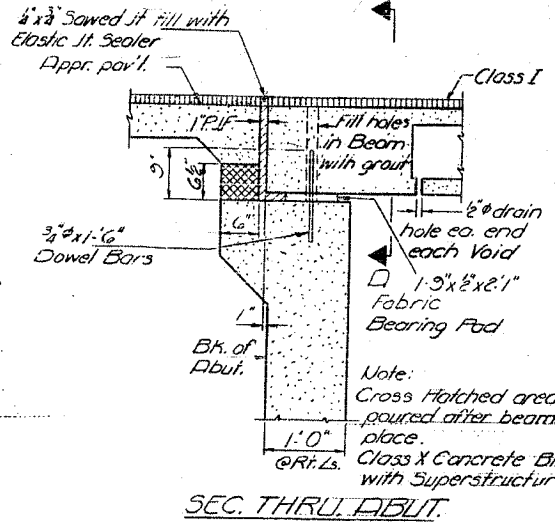
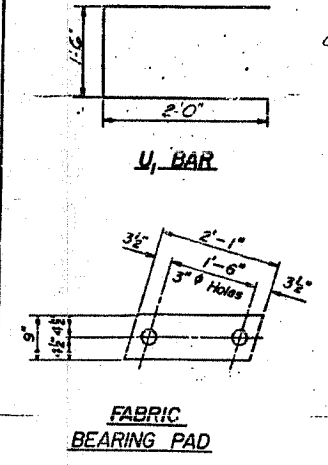


PROJECT NO.	SECTION	DATE	SCALE	SHEET NO.
8	I-BR	LA SALLE	44	15
6 SHEETS				



**GENERAL NOTES**

The nominal diameter shall be 7/8" and the nominal cross-sectional area shall be 0.109 sq. in. Lifting loops shall be 3/8" diameter, 6x19 class wire rope with fiber core and shall have a minimum ultimate tensile strength of 3,000 lbs.

The 1" rods in the transverse tie assembly shall be tightened to a snug fit and the threads set. Pockets that receive transverse tie bar on outside beam shall be filled with grout after transverse tie assembly is in place.

Longitudinal shear keys shall be packed with a very dry mix of 2-1 sand and P.C. mortar. After beams have been erected, holes for the dowel anchors shall be drilled into the sub-structure and the anchor dowels shall be grouted in place.

Steel for dowel rods, transverse tie rods shall be SAE 1020 or ASTM A-506 Grade 70-80.

After fabrication the transverse tie assemblies (tie rods, nuts, washers and sleeves) shall be hot-dipped galvanized in accordance with A.S.T.M. Designation: A 153.

Cost of reinforcement and accessories cast into the beam, of bearing pads, and of grouting longitudinal shear keys is included in unit price bid for "Precast Prestressed Concrete Deck Beams."

**BILL OF MATERIAL**

ITEM	QTY	SIZE	UNIT	PRICE
a	96	#4	3'-3"	
b	16	#6	24'-6"	
c	96	#4	1'-6"	
d	96	#5	2'-3"	
Precast Prestressed Concrete Deck Beams (21) Sq Ft 2153				
Class X Concrete Cu Yds. 97				
Reinforcement Bars Lbs. 810				

DESIGNED James E. Conquest  
CHECKED [Signature]  
DRAWN [Signature]  
CHECKED [Signature]

OCT 15 1962  
EXAMINED [Signature]  
PASSED [Signature]  
APPROVED [Signature]

SEC. D-D  
LIFTING LOOP DETAIL (4 Req'd. each Beam)

\* Not included in Reinforcement Bar Total

SUPERSTRUCTURE  
SBLRT 7A SEC. I-BR  
LA SALLE COUNTY  
37A, 14-08-00