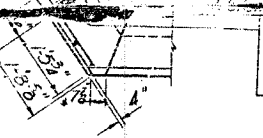
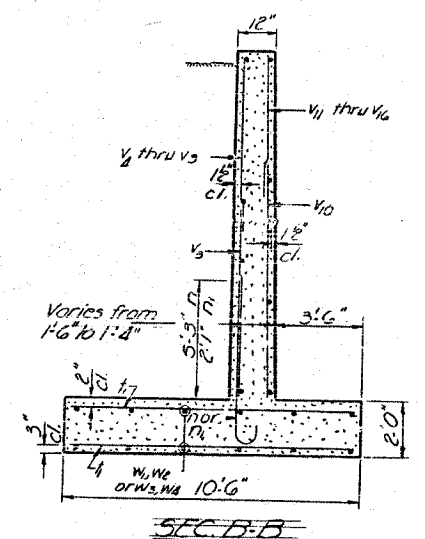
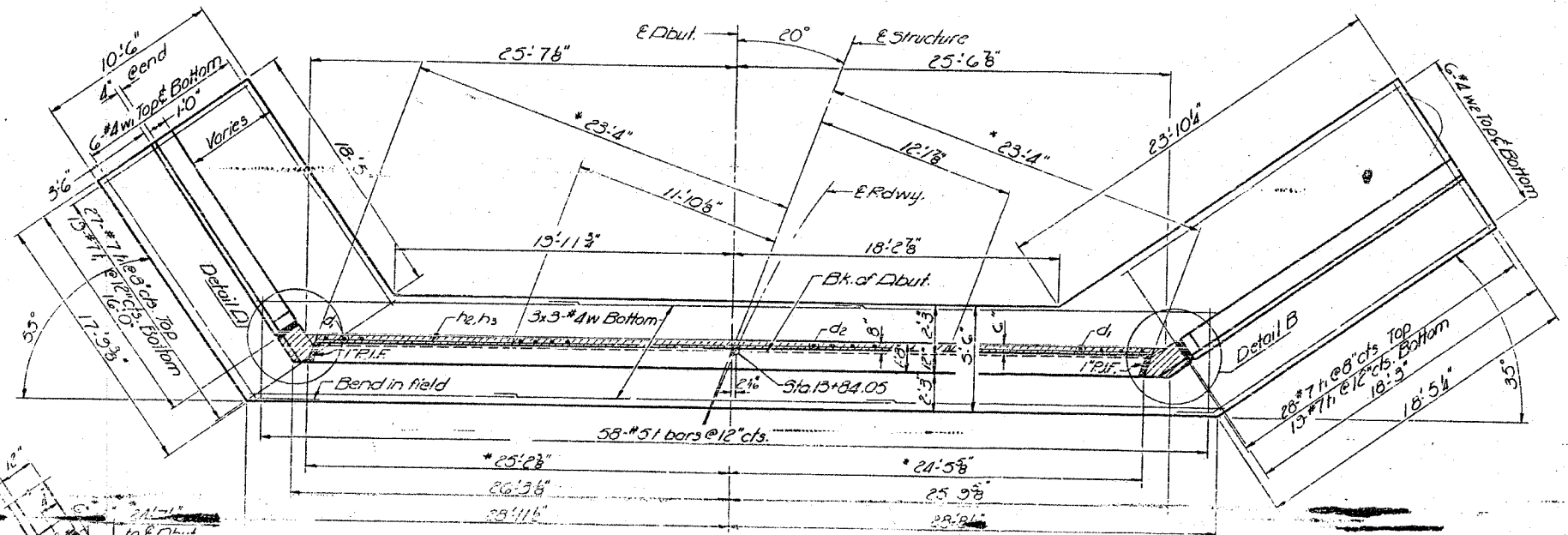
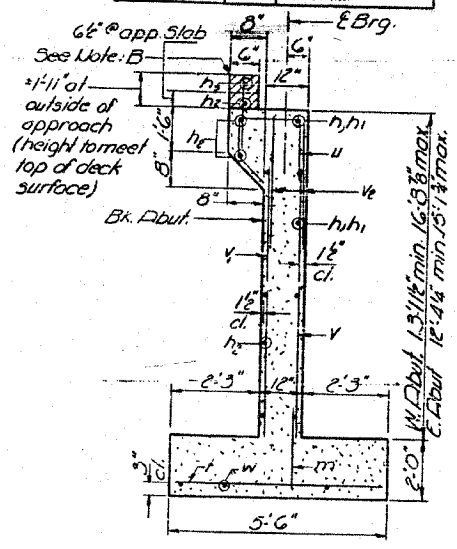
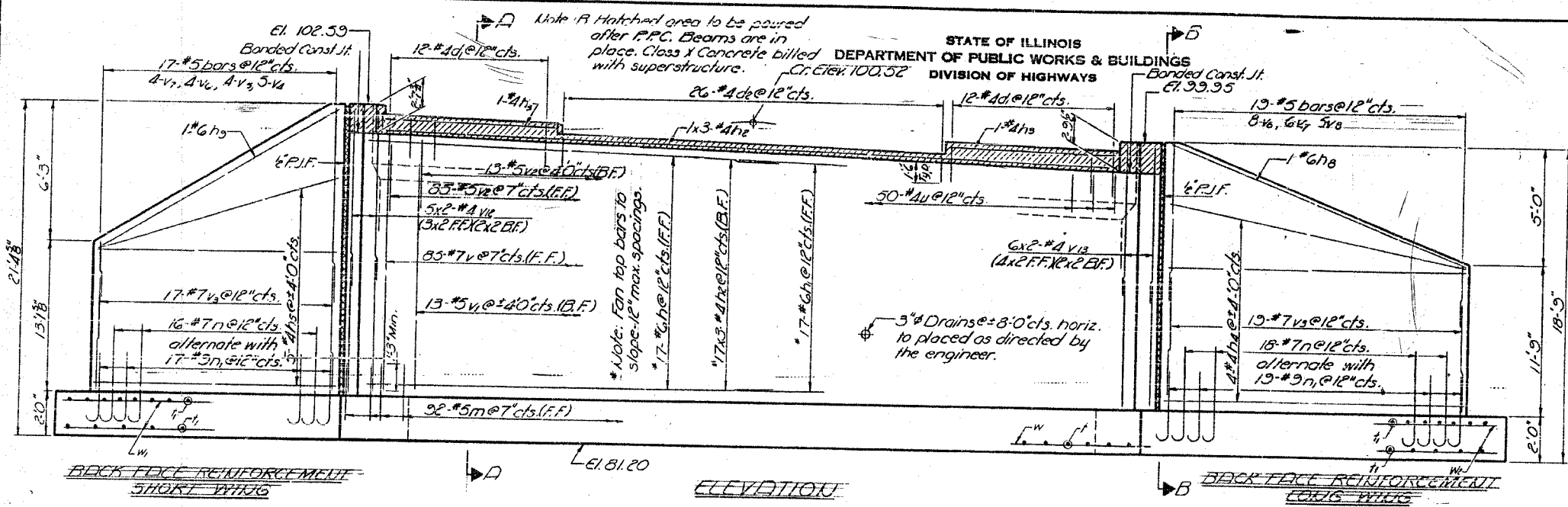
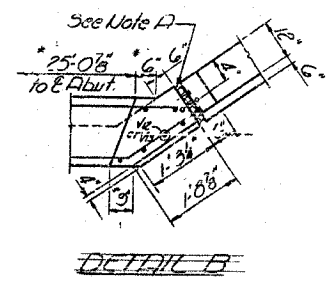
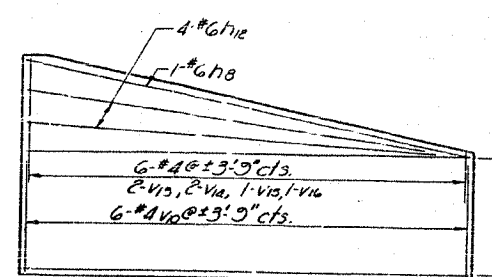
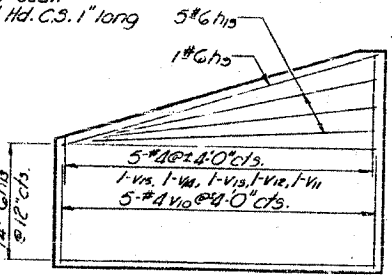


| | | | | |
|-------------|----------|---------|----|----|
| PROJECT NO. | 1-BR | LASALLE | 44 | 18 |
| SHEET NO. | 6 SHEETS | | | |

STATE OF ILLINOIS
DEPARTMENT OF PUBLIC WORKS & BUILDINGS
DIVISION OF HIGHWAYS



2 1/2\" x 1 1/2\" x 1/4\" narrow DWD type nonmetallic water seal. Concrete nails Flat Hd. C.S. 1\" long at 12\" cts. vertical.



* Note: Dimensions vary and are to be adjusted to compensate for beam overrun.

Note: Work this sheet with sheet #6.

| | | | |
|----------|--------------------|----------|----------------|
| DESIGNED | James E. O'Connell | EXAMINED | 10/15/67 |
| CHECKED | W. H. ... | PASSED | J. E. ... |
| DRAWN | James E. O'Connell | APPROVED | Richard H. ... |
| CHECKED | ... | | |

WEST ABUTMENT
581 RT 12 SECTION
LA SALLE COUNTY
STA. 74+00