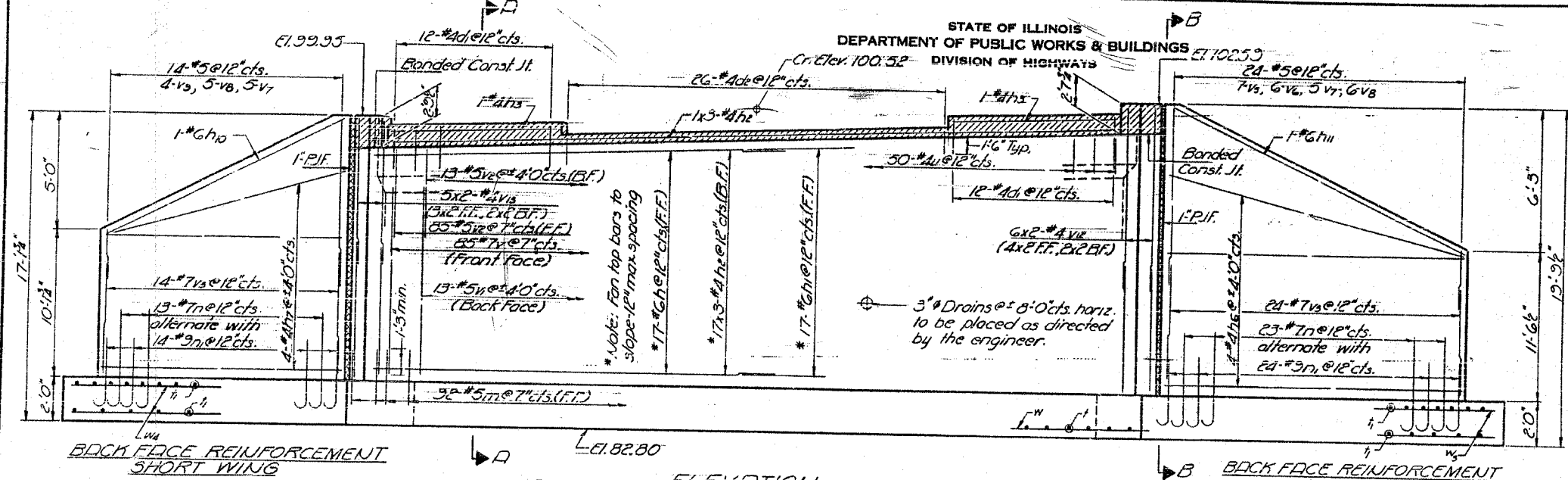
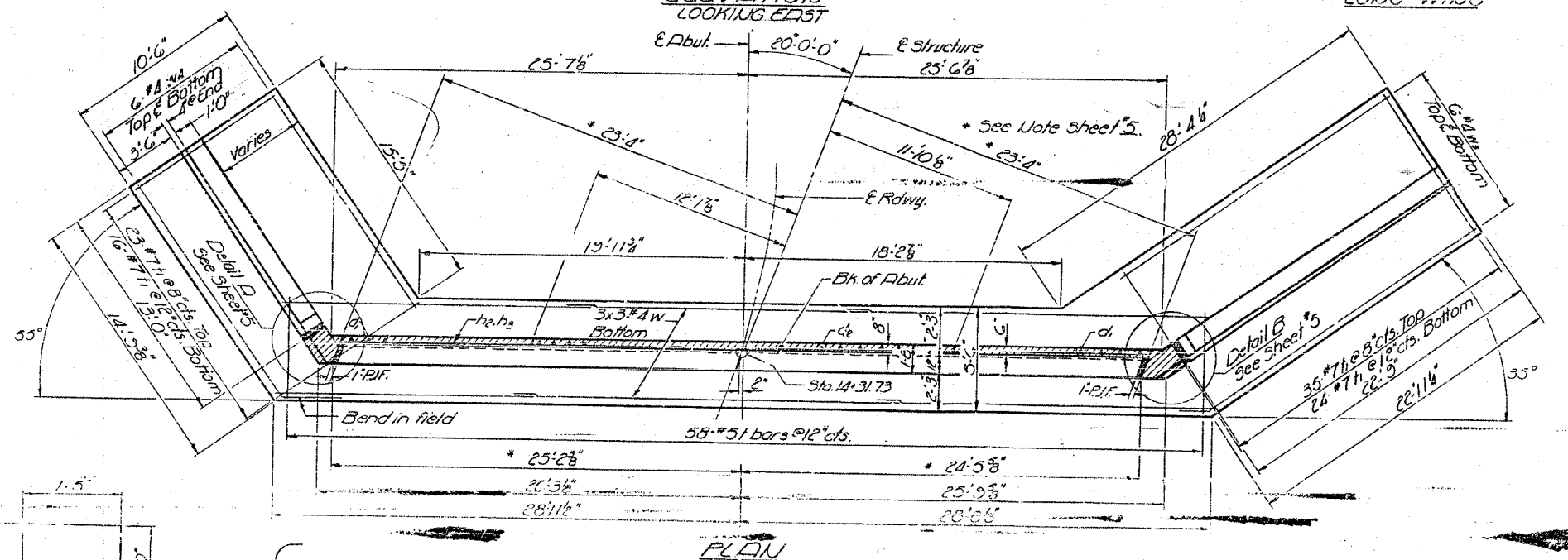


DATE	BY	NO.	TOTAL SHEETS	SHEET NO.
1-28	BR	LASALLE	44	19
6 SHEETS				



Note: For Sections A-A and B-B See Sheet # 5

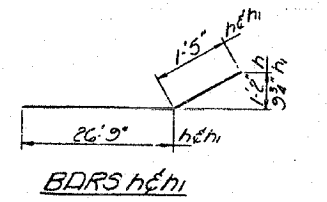
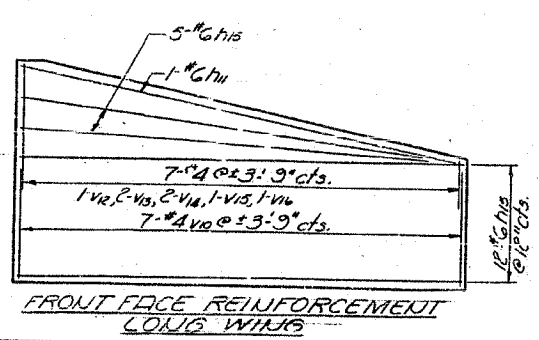
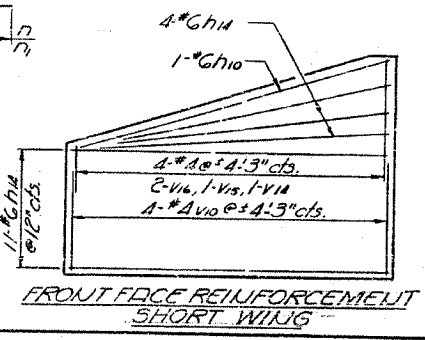


TWO ABUTMENTS - BILL OF MATERIAL

Bar	No.	Size	Length	Shape	Bar	No.	Size	Length	Shape
d1	18	#4	3'-3"		v	170	#7	12'-0"	
d2	52	#4	1'-11"		vt	26	#5	12'-0"	
h	34	#6	28'-2"		vs	196	#5	5'-6"	
h1	34	#6	28'-2"		vt	74	#7	8'-0"	
h2	108	#4	18'-3"		vs	5	#5	12'-3"	
h3	4	#4	12'-0"		vs	11	#5	10'-6"	
h4	4	#4	18'-0"		vs	18	#5	9'-0"	
h5	5	#4	15'-3"		vs	20	#5	7'-6"	
h6	4	#4	22'-6"		vs	16	#5	6'-0"	
h7	4	#4	12'-9"		vs	4	#5	4'-6"	
h8	2	#6	18'-8"		vs	22	#4	8'-0"	
h9	2	#6	17'-0"		vs	1	#4	12'-5"	
h10	2	#6	15'-3"		vs	24	#4	10'-6"	
h11	2	#6	23'-4"		vs	27	#4	9'-6"	
h12	17	#6	18'-0"		vs	6	#4	7'-6"	
h13	19	#6	15'-9"		vs	4	#4	6'-0"	
h14	17	#6	22'-6"		vs	1	#4	4'-6"	
h15	17	#6	22'-6"		vs	18	#2	20'-0"	
h16	17	#6	22'-6"		vs	23	#2	18'-3"	
m	162	#4	5'-8"		vs	12	#4	20'-6"	
n	70	#7	7'-6"		vs	12	#4	25'-0"	
n1	74	#9	4'-9"		vs	12	#4	15'-6"	
r	116	#5	5'-3"		Class A Concrete Cu.Yds. 213.0				
r1	191	#7	10'-5"		Reinforcement Bars Lbs. 23,330				
u	100	#4	6'-0"						

DESIGNED James E. Oppert
 CHECKED [Signature]
 DRAWN James E. Oppert
 CHECKED [Signature]

EXAMINED OCT 15 1960
 PASSED [Signature]
 APPROVED [Signature]



EAST ABUTMENT
 S.B.I. RT. 7A SEC. 18R
 LA SALLE COUNTY
 STA. 14+08