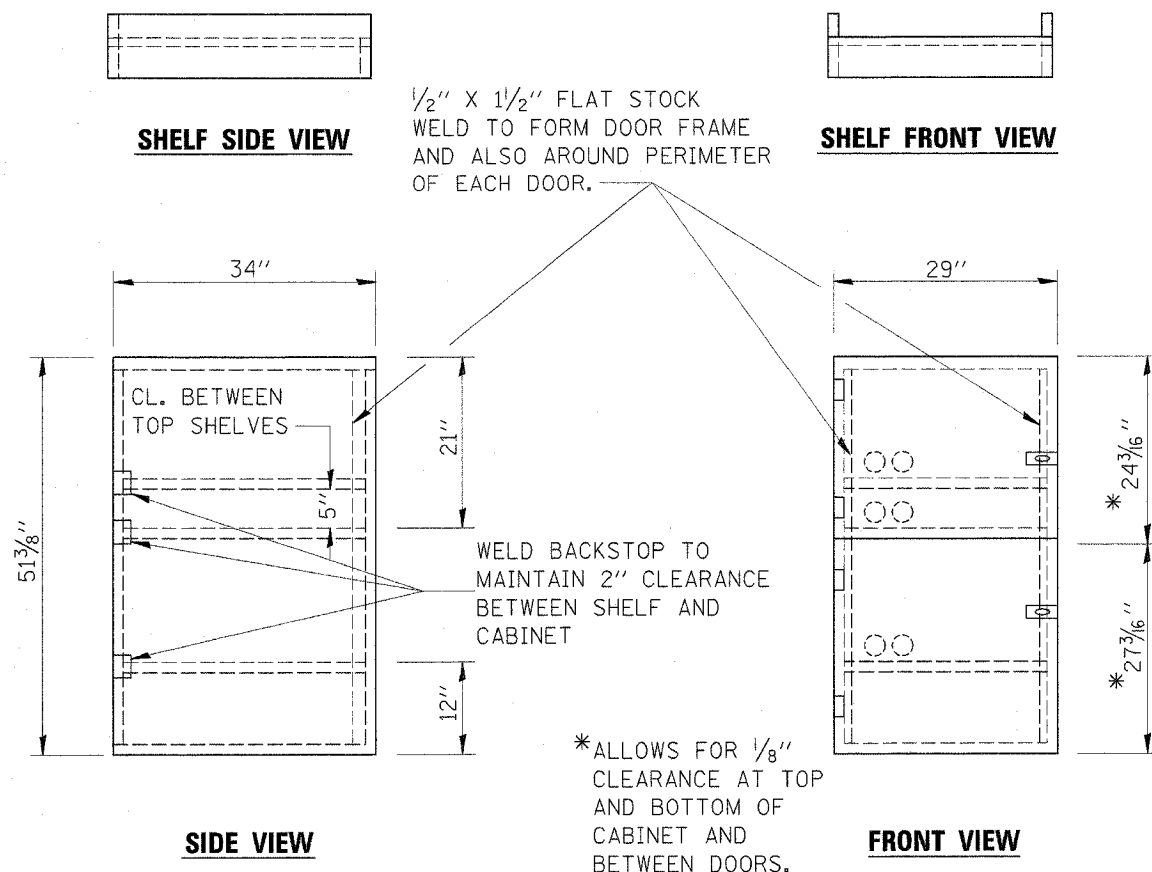
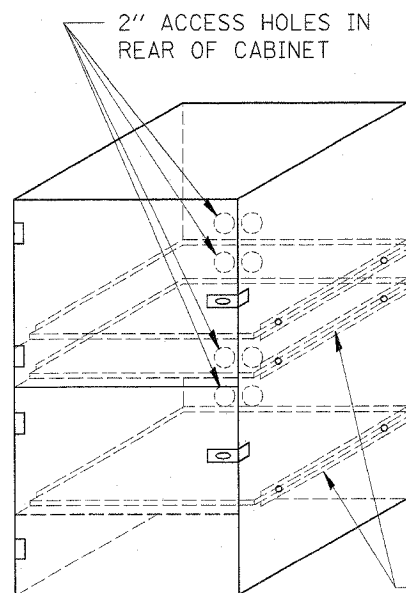


| ROUTE NO. | SECTION | COUNTY | TOTAL SHEETS | SHEET NO. |
|-----------|---------|---------|--------------|-----------|
| FAP 627 | 1 BR | LaSALLE | 46 | 41 |

ILLINOIS CONTRACT NO. 66364



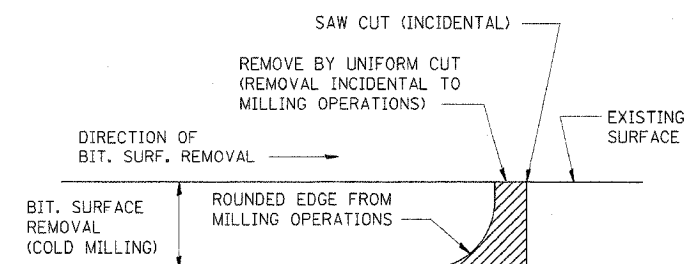
- NOTES:
1. USE 16 GAUGE STEEL FOR CABINET.
 2. THE TOP SHELF SHALL SLIDE IN OR OUT WITH THE TOP DOOR OPEN.
 3. ALL HINGES AND HASPS WILL BE WELDED TO THE CABINET.
 4. ALL EDGES SHALL BE GROUND SMOOTH.
 5. TWO (2" DIA.) ACCESS HOLES WILL BE REQUIRED FOR EACH SHELF.
 6. CABINET SHALL BE PAINTED WITH TWO COATS OF FLAT PAINT.
 7. 2 EACH MATCHING KEY PADLOCKS, WITH 3 KEYS PROVIDED, MASTER MODEL 3 T OR EQUIVALENT.
 8. 4 EACH PLAIN STEEL, NON-REMOVABLE PIN, NO HOLE 4"X4" SQUARE CORNER HINGES TO BE WELDED ON.
 9. 2 EACH EXTRA HEAVY, PLAIN STEEL, FIXED STAPLE, NO HOLE, 7 1/4 " HASPS TO BE WELDED ON.



FLAT STOCK DIMENSIONS VARY DEPENDING ON TYPE OF ROLLER ASSEMBLY.

LOCKABLE COMPUTER CABINET

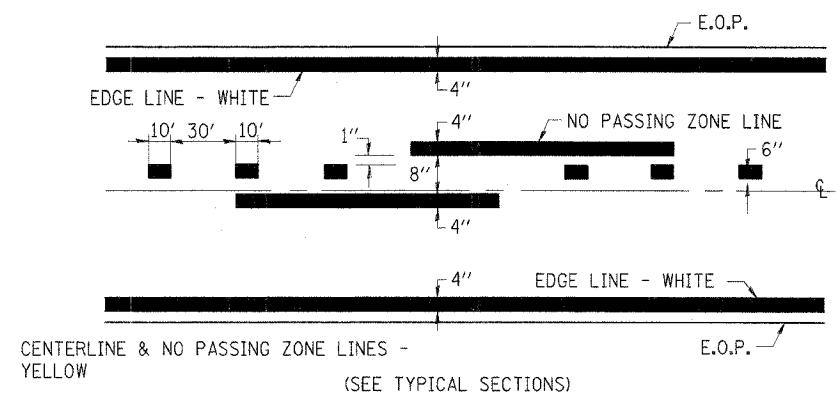
670-1



NOTE: WHEN MILLING OPERATIONS PRODUCE A ROUNDED EDGE, THEN A SAW CUT SHALL BE USED TO MANUFACTURE A PERPENDICULAR EDGE AS SHOWN IN THE DETAIL. THE ENGINEER SHALL BE THE SOLE JUDGE CONCERNING THE USE OF THIS DETAIL

BITUMINOUS DETAIL AT BUTT JOINTS

406-8



PAVEMENT MARKING

780-8

MISCELLANEOUS DETAILS

IL. RTE. 71 OVER UNNAMED STREAM
 F.A.P. RTE. 627 - SECTION 1BR
 LaSALLE COUNTY
 STA. 14+08.00
 STR. NO. 050-0244

| | | |
|--|---|--|
| 4440 ASH GROVE SPRINGFIELD, IL 62707 (217) 793-8800 oasinc@tamvid.com | OZYURT AND STONE, INC. CONSULTING ENGINEERS | JOB NO.: 0306.4 FILE: DET02.DGN DATE: 07-20-05 |
|--|---|--|