

Bench Mark: Spike, Sta. 257+03.01 21.071' Rt, Elev. 589.69.

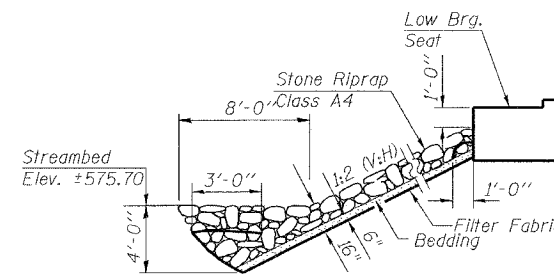
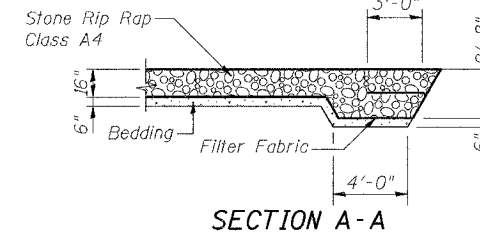
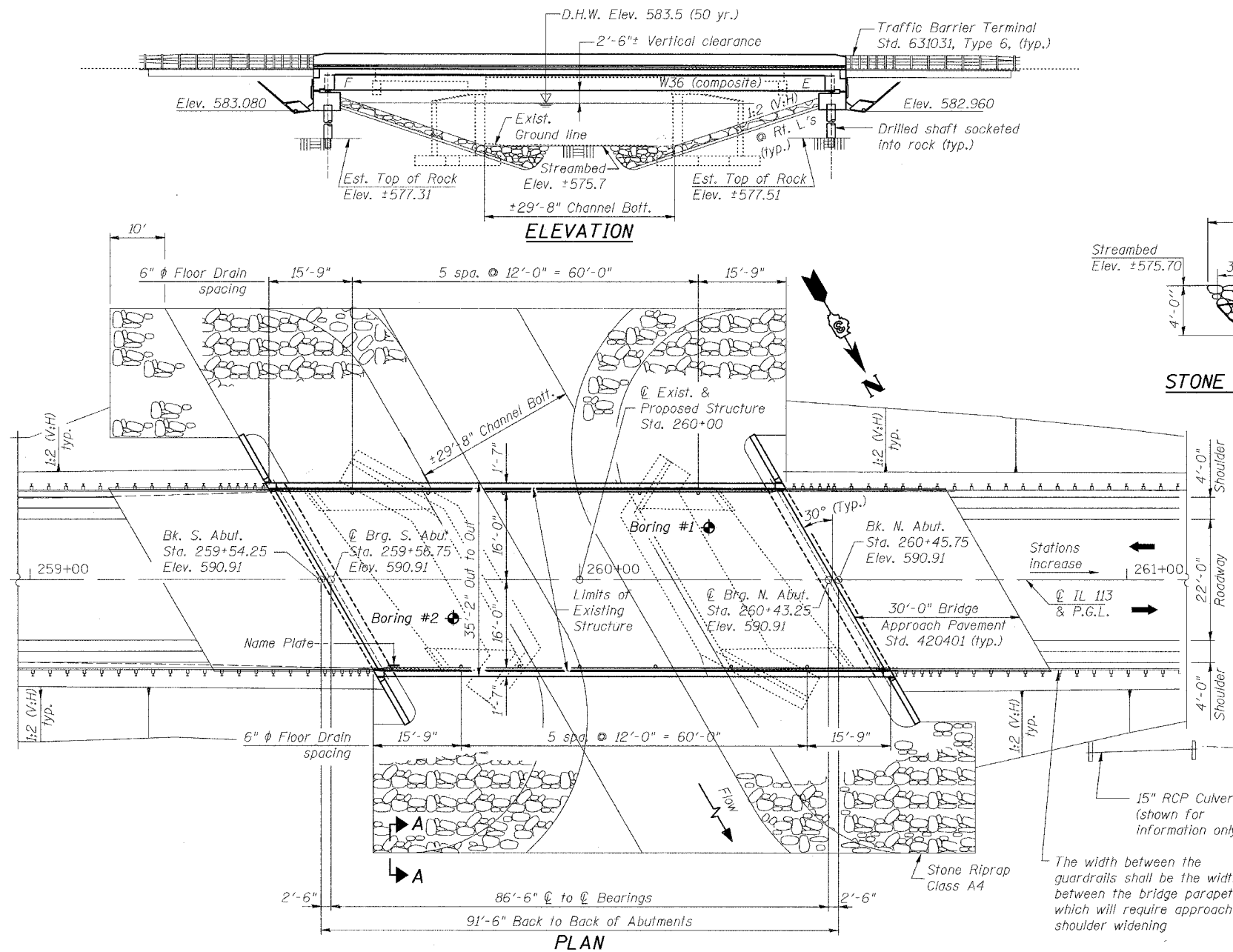
Existing Structure: S.N. 046-0074, One-span PPC deck beam with closed type abutments on spread footings founded on rock. Built in 1927 as single span reinforced concrete T beam bridge under IL Route 113, section 109B, at Sta. 260+00. Superstructure and upper abutments were replaced and widened using PPC Deck Beams in 1974, resulting in 33'-0" bridge width (Out to Out), 41'-6" bridge length (Bk. to Bk. abutments). 3'-9" wide Precast Concrete Bridge Slabs were added at sides of approach slabs. Existing structure to be removed and replaced. Traffic to be detoured during construction.

No salvage.

STATE OF ILLINOIS
DEPARTMENT OF TRANSPORTATION

SECTION	COUNTY	TOTAL SHEETS	SHEET NO.	SHEET NO.
IL 113	109BR, N	KANKAKEE COUNTY	58	18
FED. ROAD DIST. NO. 7		ILLINOIS	FED. AID PROJECT-	14 SHEETS

CONTRACT # 66410



LOADING HS20-44
Allow 50#/sq. ft. for future wearing surface.
DESIGN SPECIFICATIONS
2002 AASHTO, 17th Edition

DESIGN STRESSES

FIELD UNITS

$f'_c = 3,500$ psi
 $f_y = 60,000$ psi (reinforcement)
 $f_y = 50,000$ psi (structural steel)
AASHTO M270 Grade 50W

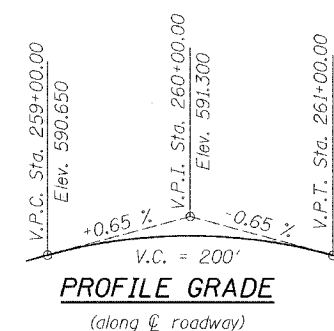
SEISMIC DATA

Seismic Performance Category (SPC) = A
Bedrock Acceleration Coefficient (A) = 0.04g
Site Coefficient (S) = 1.0

STATION 260+00
BUILT 2006 BY
STATE OF ILLINOIS
F.A.S. 1317 (IL 113)
SECT 109 BR, N
LOADING HS20
STR. NO. 046-0137

NAME PLATE

See Std. 515001

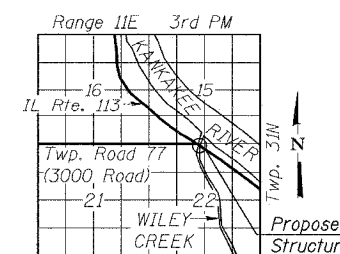


APPROVED
FOR STRUCTURAL ADEQUACY ONLY

Ralph E. Anderson (TSP)
ENGINEER OF BRIDGES AND STRUCTURES



Hakim H. Tayebi
HAKIM H. TAYEBI
ILLINOIS LICENSED
STRUCTURAL ENGINEER
NO. 081-003266
LICENSE EXP. 11-30-06



LOCATION SKETCH

WATERWAY INFORMATION

Drainage Area = 10.98 mi² Low Grade Elev. 590.0 ft. @ Sta. 261+00

Flood	Freq. Yr.	Q C.F.S.	Opening Sq. Ft.		Nat. H.W.E.		Head - Ft.		Headwater El.	
			Exist.	Prop.	Exist.	Prop.	Exist.	Prop.	Exist.	Prop.
Design	10	836	218	306	583.0	0.2	0.1	583.2	583.1	
Overtopping	50	1224	234	336	583.5	0.4	0.3	583.9	583.8	
Base	100	1380	241	351	583.8	0.4	0.3	584.2	584.1	
Max. Calc.	500	1741	260	388	584.9	0.5	0.4	585.4	585.3	

Nat. H.W.E. derived from Kankakee River Q10 Event, river Q50 = 584.4

DESIGNED	N.U.S./J.M./R.A.
CHECKED	M.R.
DRAWN	J.B.
CHECKED	H.T.

SCALE: NONE DATE: AUGUST, 2005
Soodan & Associates, Inc.
100 North LaSalle Street, Suite 1800
Chicago, Illinois 60602

GENERAL PLAN AND ELEVATION
IL 113 OVER WILEY CREEK (PUBLIC WATERS)
FAS ROUTE 1317 (IL 113), SECTION 109BR, N
KANKAKEE COUNTY
STATION 260+00.00
STRUCTURE NO. 046-0137