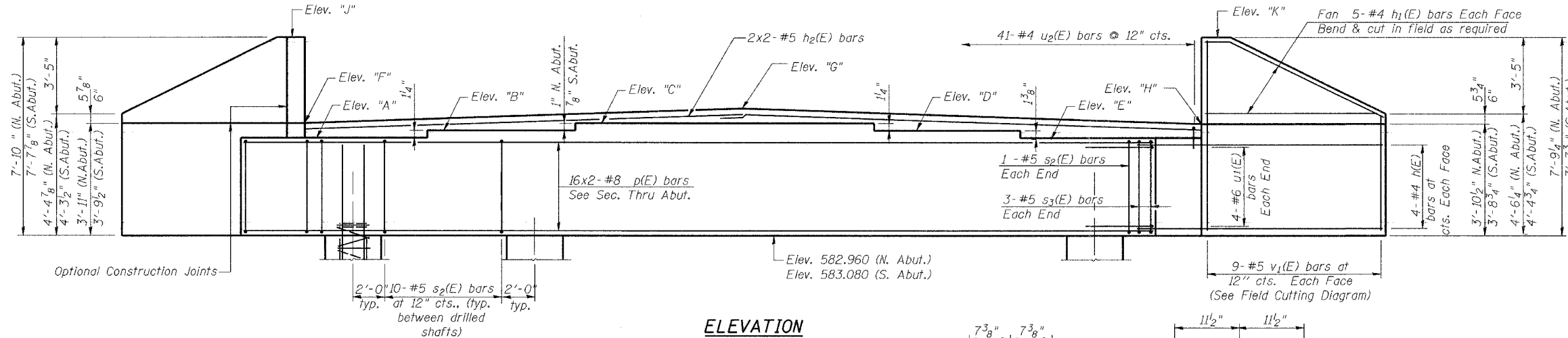


STATE OF ILLINOIS
DEPARTMENT OF TRANSPORTATION

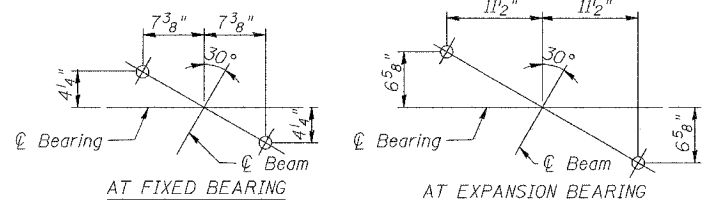
SECTION	COUNTY	TOTAL SHEETS	SHEET NO.	SHEET NO. 10
IL 113	109BR, N	KANKAKEE COUNTY	58	27
FED. ROAD DIST. NO. 7 ILLINOIS FED. AID PROJECT-				

CONTRACT # 66410

- Notes:
1. Pour steps monolithically with cap.
 2. Reinforcement bars designated (E) shall be epoxy coated.
 3. Space cap reinforcement to miss anchor bolts. Minimum lap for spirals = 1 1/2 turns
 4. All exposed edges shall have 3/4" chamfer, except as noted.



ELEVATION
(Looking North, North Abut.)
(Looking South, South Abut.)



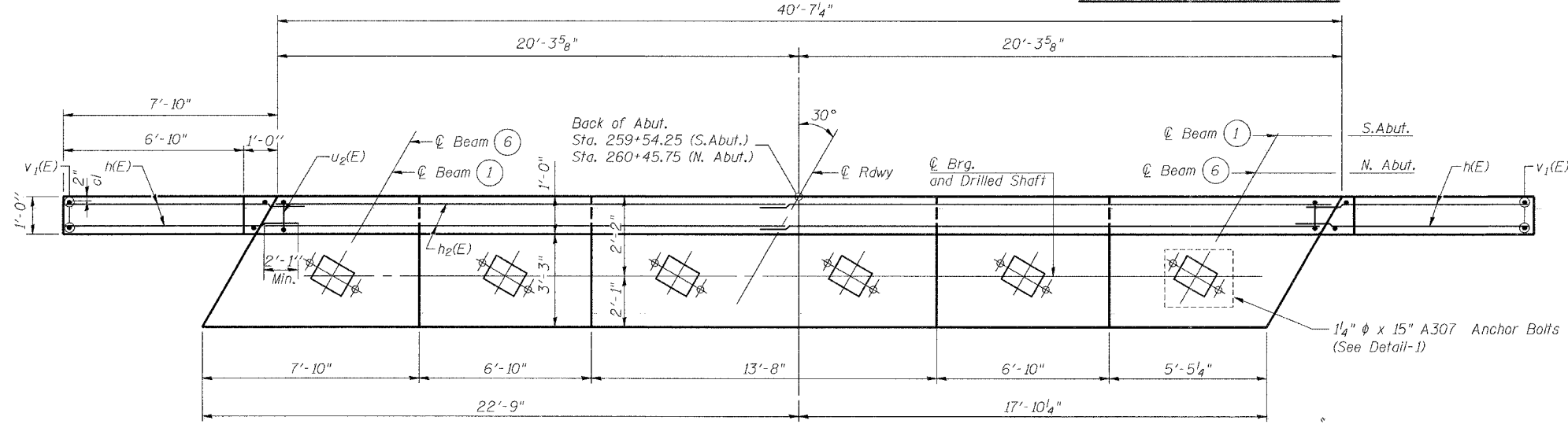
DETAIL-1
(ANCHOR BOLT LOCATION)

ELEVATION TABLE

Location	North Abutment	South Abutment
"A"	586.503	586.638
"B"	586.602	586.737
"C"	586.681	586.811
"D"	586.573	586.708
"E"	586.455	586.590
"F"	586.878	586.878
"G"	587.157	587.157
"H"	586.823	586.823
"J"	590.786	590.786
"K"	590.731	590.731

BILL OF MATERIAL
(North & South Abutment)

Bar	No.	Size	Length	Shape
h(E)	32	#4	9'-10"	
h1(E)	40	#4	8'-3"	
h2(E)	8	#5	21'-4"	
p(E)	64	#8	23'-2"	
s2(E)	64	#5	15'-1"	
s3(E)	24	#5	10'-0"	
u1(E)	16	#6	9'-11"	
u2(E)	82	#4	4'-11"	
v1(E)	36	#9	7'-7"	
v2	56	#9	9'-0"	
n(E)	112	#9	8'-9"	
sp	8	#4	84'-6"	
Concrete Structures	Cu. Yd.		53.9	
Reinforcement Bars, Epoxy Coated	Pound		10,592	
Structure Excavation	Cu. Yd.		210.0	
Drilled Shaft in Soil, 36" Dia.	Foot		28	
Drilled Shaft in Soil, 42" Dia.	Foot		45	
Reinforcement Bars	Pound		2,161	

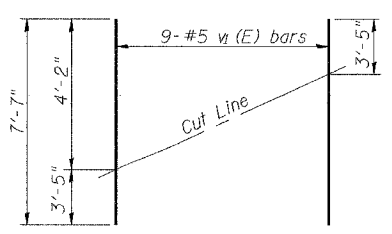


PLAN

MIN. BAR LAPS

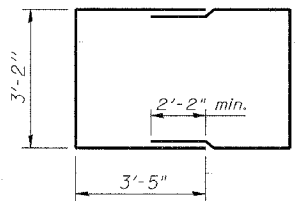
- #4 bars = 1'-8"
- #5 bars = 2'-2"
- #6 bars = 2'-7"
- #7 bars = 4'-10"
- #8 bars = 6'-4"

DESIGNED	M.R./R.A.
CHECKED	H.T.
DRAWN	J.S.
CHECKED	H.T./M.R.

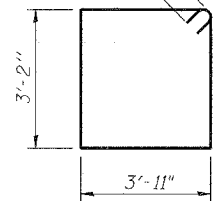


FIELD CUTTING DIAGRAM

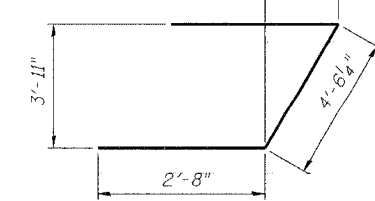
Order v1(E) full length. Cut as shown and use remainder of bars in opposite face.



BARS s3(E) Pairs



BARS s2(E)



BAR u1(E)

ABUTMENT PLAN & ELEVATION
IL. 113 OVER WILEY CREEK (PUBLIC WATERS)
FAS ROUTE 1317 (IL 113), SECTION 109BR, N
KANKAKEE COUNTY
STATION 260+00.00
STRUCTURE NO. 046-0137

SCALE: NONE DATE: AUGUST, 2005
Soodan & Associates, Inc.
100 North LaSalle Street, Suite 1800
Chicago, Illinois 60602

Soodan