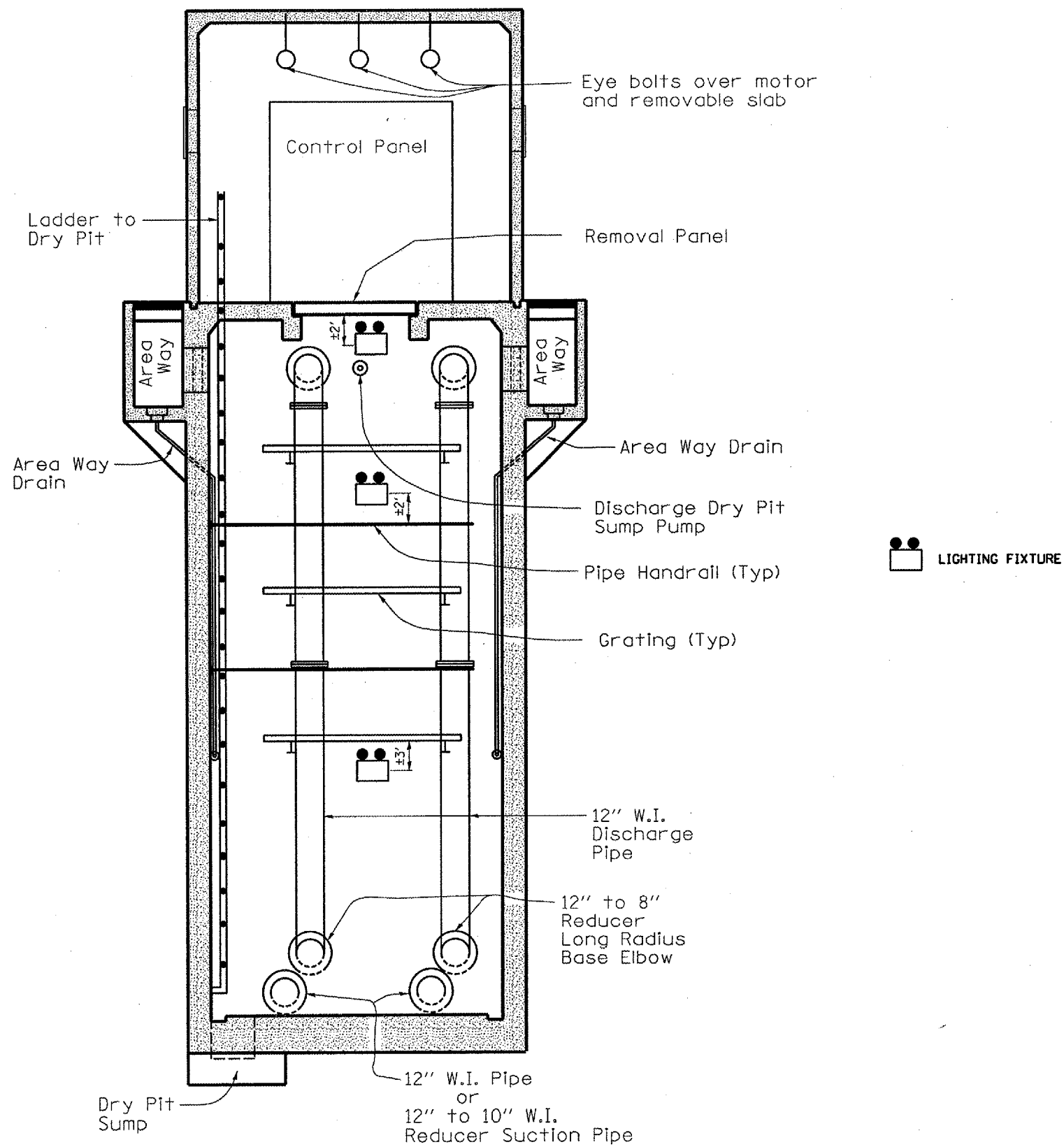


F.A.P. RTE.	SECTION	COUNTY	TOTAL SHEETS	SHEET NO.
649	(107)I-2	LIVINGSTON	7	6



SECTION C-C

REVISIONS	
NAME	DATE

ILLINOIS DEPARTMENT OF TRANSPORTATION
PUMP HOUSE DETAILS
 READING PUMPING STATION
 FAP 649
 SECTION (107)I-2
 LIVINGSTON COUNTY

SCALE: VERT. DRAWN BY: RW
 HORIZ. CHECKED BY
 DATE: 08/12/2005

DATE: JULY 29, 2005
 FILE: c:/projects/cmain06/cm319/details.dgn