

**STATE OF ILLINOIS
DEPARTMENT OF TRANSPORTATION**

F.A.P. RTE.	SECTION	COUNTY	TOTAL SHEETS	SHEET NO.
315	(55-2)A	McDONOUGH	55	2
STA.		TO STA.		
FED. ROAD DIST. NO. 4 ILLINOIS FED. AID PROJECT				

SHT. NO. DESCRIPTION

- 1 COVER SHEET
- 2 INDEX OF SHEETS
- 3 GENERAL NOTES, JOB SPECIFIC NOTES, COMMITMENTS
- 4 STATUS OF UTILITIES
- 5 SUMMARY OF QUANTITIES
- 6 TYPICAL SECTIONS
- 7 SCHEDULE OF QUANTITIES
- 8 ALIGNMENT TIES AND BENCHMARKS
- 9 PROJECT LINE DIAGRAM
- 10 CONSTRUCTION STAGING PLAN
- 11-13 REMOVAL ITEMS
- 14-16 GRADING AND DRAINAGE PLAN AND PROFILES
- 17-19 EROSION CONTROL PLAN AND PROFILES
- 20-21 RIGHT OF WAY PLANS
- 22 GRADING DETAIL

SHT. NO. DESCRIPTION

- DETAILS
- △ 22A BOX CULVERT END SECTION, CULVERT NO. 1 DETAILS
 - 23 DRAINAGE STRUCTURE NO. 1 DETAILS
 - 24 SOIL TREATMENT DETAILS - CULVERT STA. 510+17.89
 - 25 SEDIMENT BASIN DETAILS
 - 26 SILT CURTAIN DETAILS
- DISTRICT 4 CADD STANDARDS
- 27 205001-D4 SLOPE STEPS DETAIL
 - 28 205101-D4 SETTLEMENT PLATFORM
 - 29 604101-D4 MEDIAN INLET (604101), SPECIAL AND
MEDIAN INLET (604106), SPECIAL
- CROSS SECTIONS
- 30 - 55 CROSS SECTIONS - IL. ROUTE 336

DESCRIPTION OF WORK

EARTHWORK, CULVERTS AND DRAINAGE

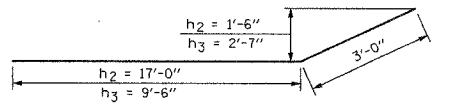
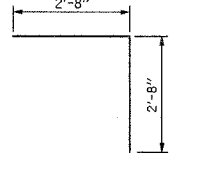
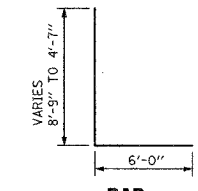
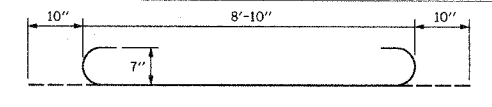
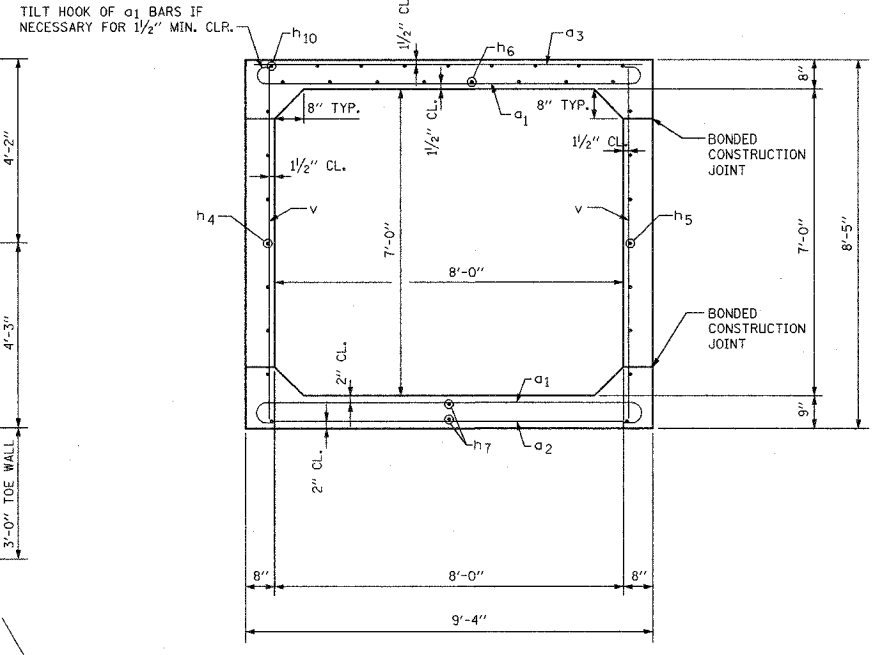
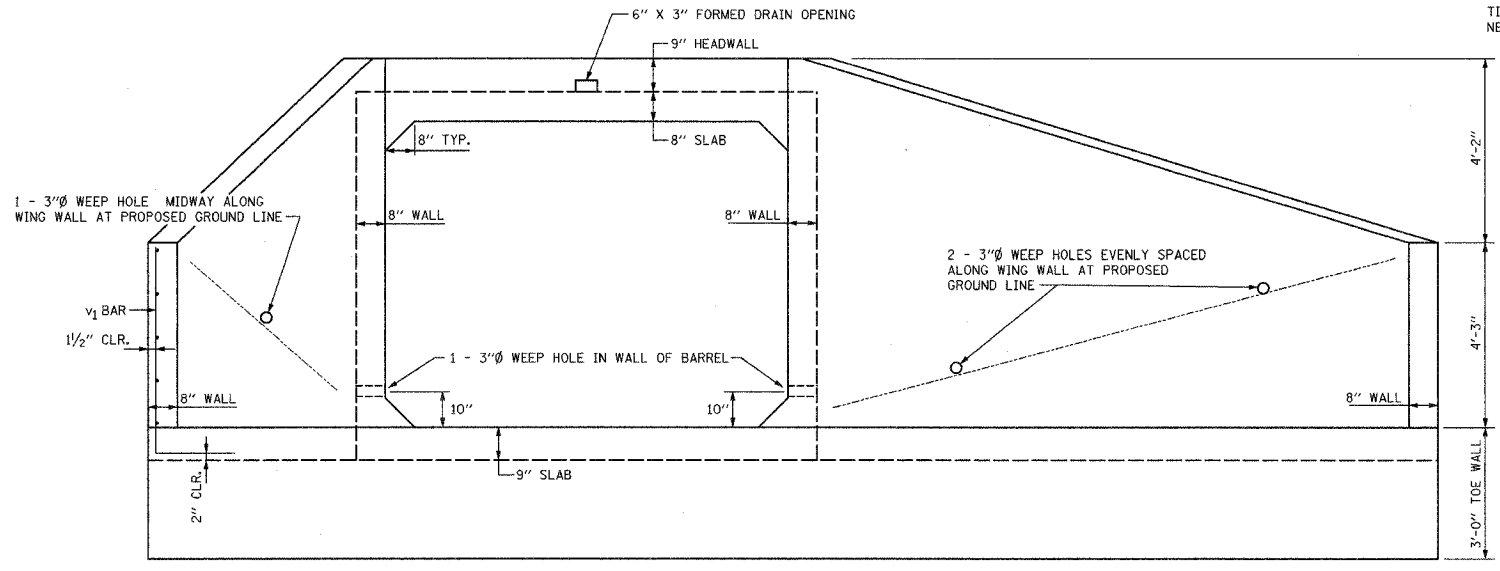
REVISED
11-2-05
SHEET

REVISIONS		ILLINOIS DEPARTMENT OF TRANSPORTATION
NAME	DATE	
		INDEX OF SHEETS IL. ROUTE 336

REV. 11/01/05
DATE 8/29/05

DRAWN BY DLG
CHECKED BY KMC

F.A.P. NO.	SECTION	COUNTY	TOTAL SHEETS	SHEET NO.
315	(55-2)A	McDONOUGH	55	22A
STA.		TO STA.		
FED. ROAD DIST. NO. 4 ILLINOIS FED. AID PROJECT				



END ELEVATION

SECTION A-A

BILL OF MATERIAL
(For Two End Sections)

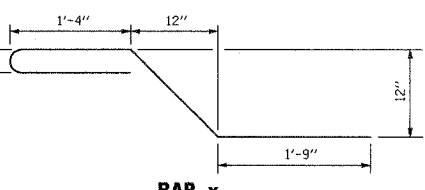
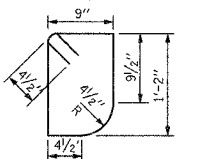
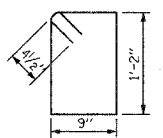
Bar	No.	Size	Length	Shape
* a1	48	#7	10'-6"	C
a2	6	#4	9'-0"	
* a3	8	#5	9'-0"	
* b	24	#4	11'-0" TO 29'-1"	
d	40	#4	5'-4"	
h	4	#6	10'-5"	
h1	4	#6	9'-0"	
h2	18	#6	20'-0"	
h3	18	#6	12'-6"	
h4	14	#6	3'-0"	
h5	8	#6	8'-0"	
* h6	8	#6	11'-6"	
* h7	14	#5	31'-0"	
* h8	10	#5	12'-3"	
* h9	10	#5	13'-3"	
* h10	10	#4	11'-6"	
s	10	#4	4'-7"	
s1	10	#4	4'-5"	
v	32	#4	8'-1"	
* v1	54	#6	13'-9" TO 10'-7"	
x	84	#4	6'-2"	
x1	12	#4	9'-4"	
x2	12	#4	14'-4"	
* MAY FIELD BEND AND/OR FIELD CUT				
Box Culvert End Section, Culvert No. 1	Each			2

- 1) 7 - #7 a1 BARS AT 6" CTS. TOP OF BOTTOM SLAB AND BOTTOM OF TOP SLAB
- 2) 3 - #5 a3 BARS AT 18" CTS. TOP OF TOP SLAB

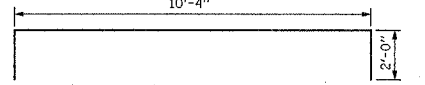
- 3 - #4 a2 BARS AT 12'-0" CTS. BOTTOM OF BOTTOM SLAB ONLY

- 5 - #4 v AT 10" CTS. IN WALL
- 7 - #6 h4 BARS AT 12" CTS. IN WALL

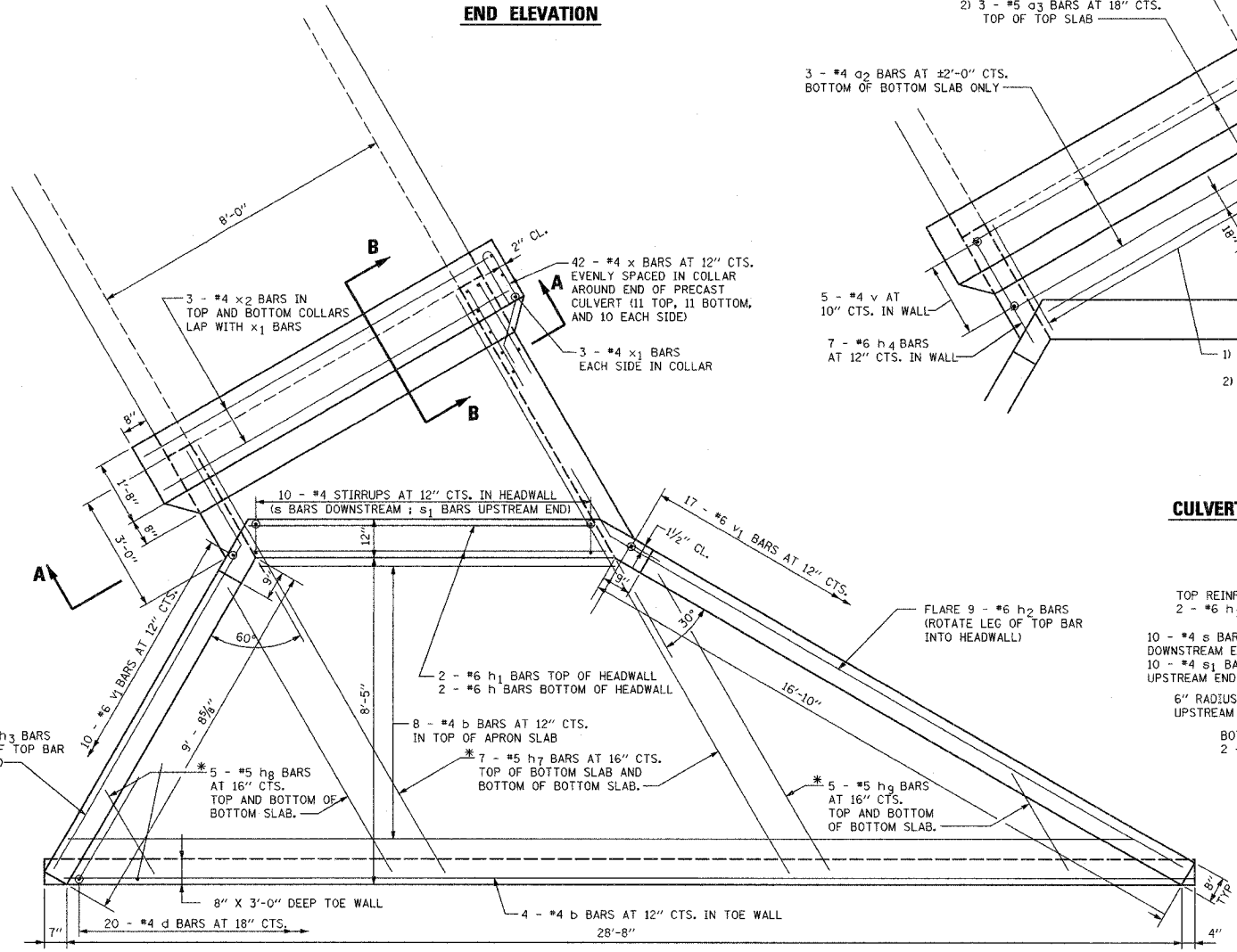
- 1) 10 - #7 a1 BARS AT 6" CTS. TOP OF BOTTOM SLAB AND BOTTOM OF TOP SLAB.
- 2) 2 - #5 a3 BARS AT 18" CTS. TOP OF TOP SLAB.
- ORDER a1 AND a3 FULL LENGTH AND CUT TO FIT. BALANCE OF BAR TO BE USED IN END SECTION AT OPPOSITE END OF CULVERT.
- 7 - #6 h5 BARS AT 12" CTS. IN WALL
- 1) 8 - #6 h6 BARS AT 13" CTS. BOTTOM OF TOP SLAB;
- 2) 10 - #4 h10 BARS AT 12" CTS. TOP OF TOP SLAB.
- ORDER h6 AND h10 FULL LENGTH AND CUT TO FIT. BALANCE OF BAR TO BE USED IN END SECTION AT OPPOSITE END OF CULVERT.



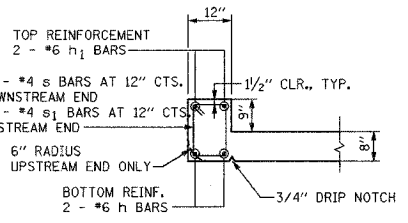
BAR x



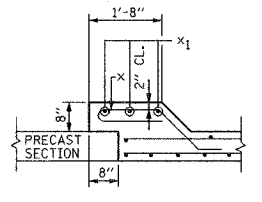
BAR x2



CULVERT SLAB PLAN



SECTION THRU HEADWALL



SECTION B-B THRU COLLAR

DESIGN STRESSES

fy = 60,000 psi
f'c = 3,500 psi

LOADING HS 20-44

REVISED
11-2-05

SHEET ADDED

NOTES

1. THE BARREL SHALL BE POURED MONOLITHICALLY WITH THE WINGWALLS.
2. REINFORCEMENT BARS SHALL CONFORM TO THE REQUIREMENTS OF AASHTO M-31 OR M-322, GRADE 60.
3. CHAMFER EXPOSED EDGES 3/4".
4. ALL CONSTRUCTION JOINTS SHALL BE BONDED.
5. THE PRICE FOR BOX CULVERT END SECTION, CULVERT NO. 1, SHALL BE PAYMENT IN FULL FOR ALL LABOR AND MATERIALS NECESSARY TO CONSTRUCT THE END SECTION AS SHOWN ON THE PLANS INCLUDING CONCRETE COLLARS, REINFORCEMENT BARS, CONCRETE, CAST-IN-PLACE SECTIONS OF THE BARREL AND ALL OTHER COLLATERAL WORK.

REVISIONS	
NAME	DATE

ILLINOIS DEPARTMENT OF TRANSPORTATION
BOX CULVERT END SECTION, CULVERT NO. 1
DETAILS
CENTERLINE STA. 510 + 17.89
IL. ROUTE 336

DATE 11/01/05

DRAWN BY DLC
CHECKED BY P.JL

* ORDER BARS h7, h8, h9 FULL LENGTH, CUT TO FIT AND USE REMAINDER AT OPPOSITE END OF CULVERT

PLAN