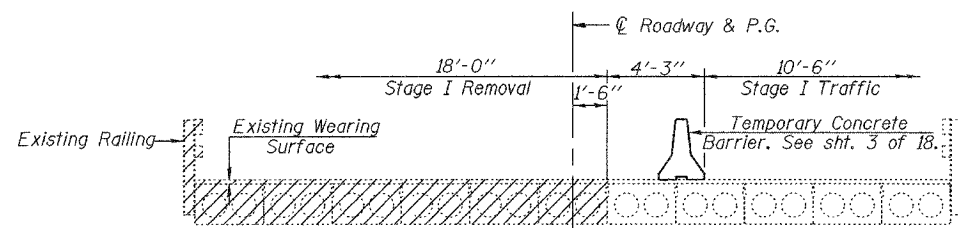
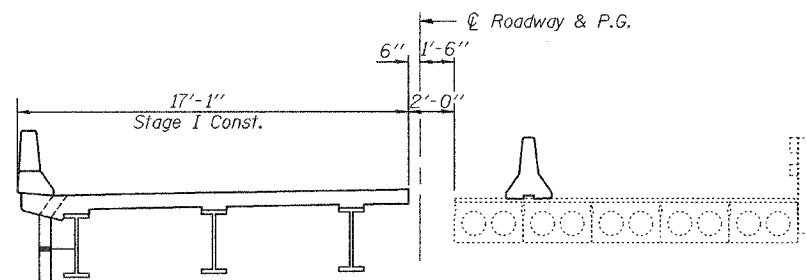


STATE OF ILLINOIS  
DEPARTMENT OF TRANSPORTATION

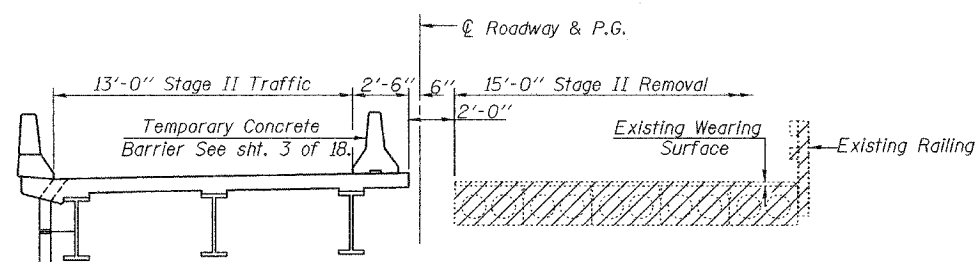
ROUTE NO.	SECTION	COUNTY	STATION	SHEET NO.	SHEET NO. 2
F.A.S. 1774	113(B-5, B-6)	LOGAN	60	19	18 SHEETS
FED. ROAD DIST. NO. 7	ILLINOIS	FED. AID PROJECT-	Contract #72760		



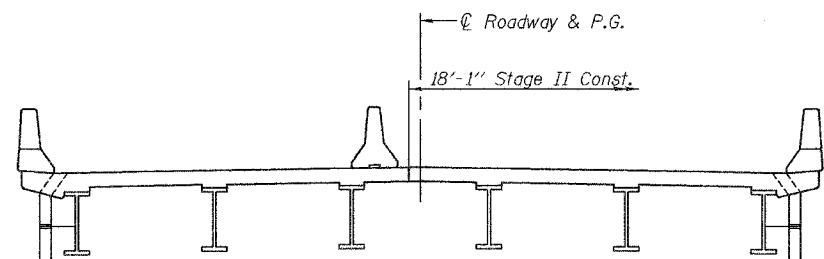
STAGE I REMOVAL



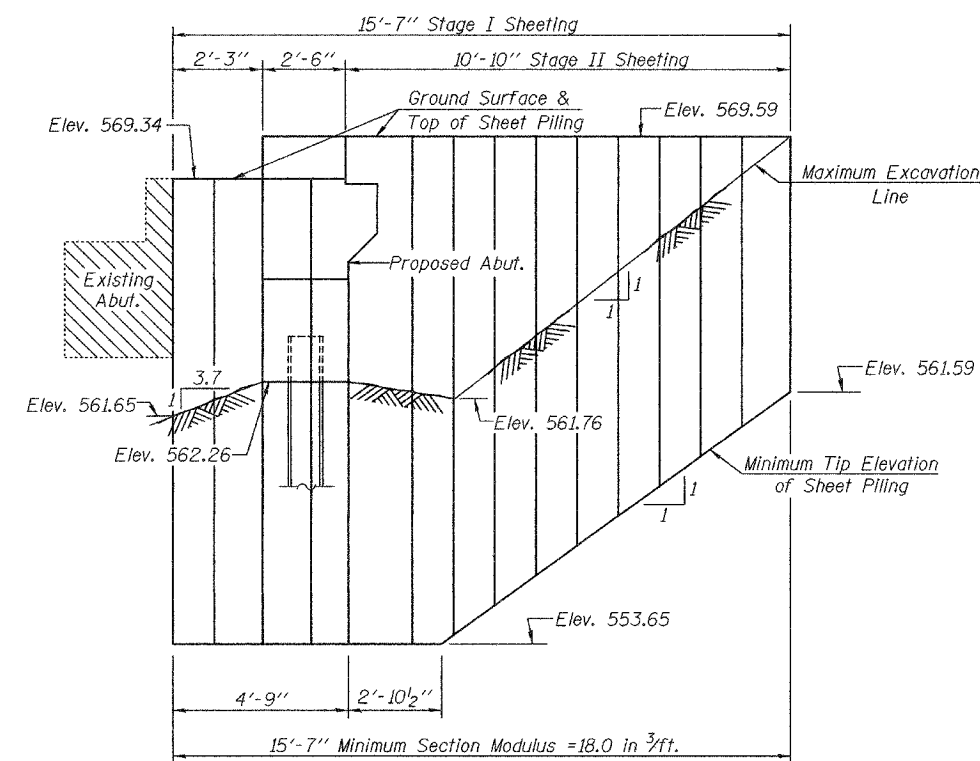
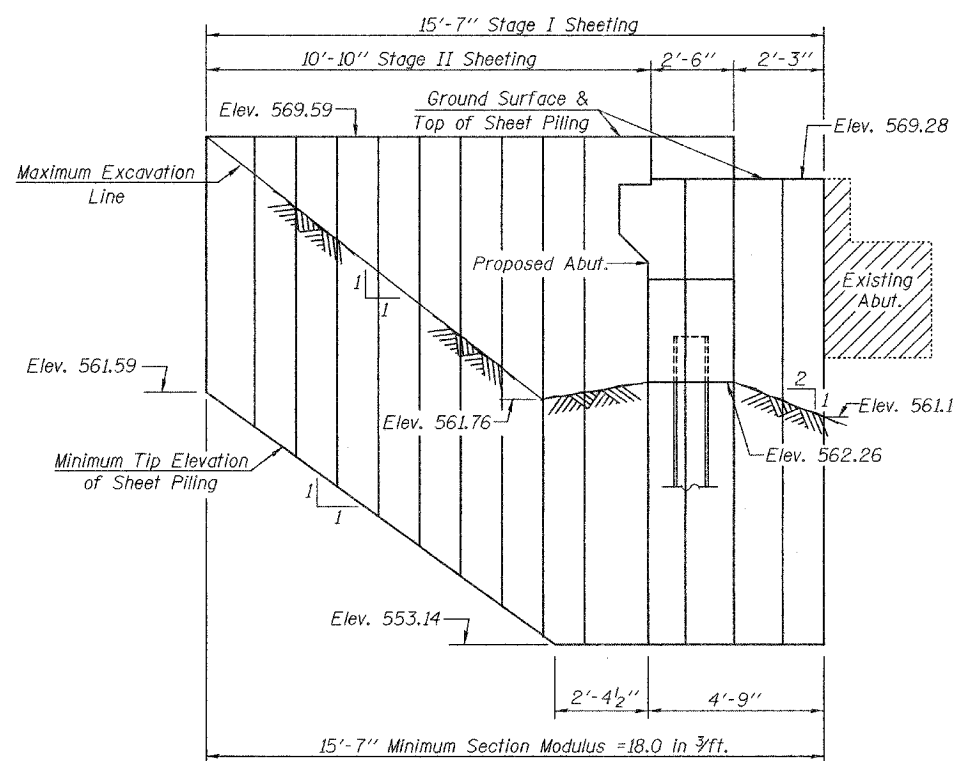
STAGE I CONSTRUCTION



STAGE II REMOVAL



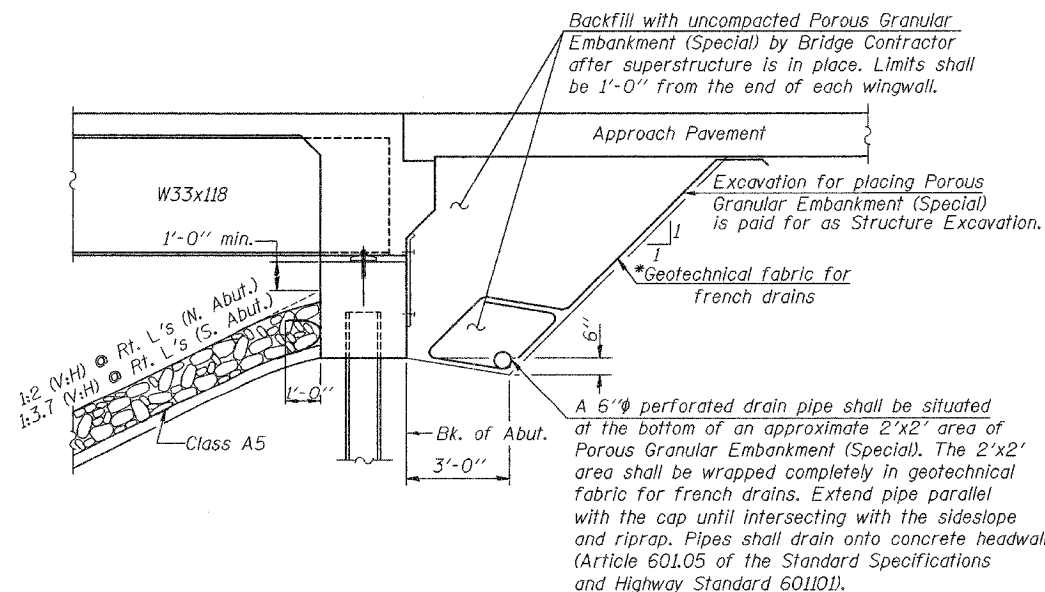
STAGE II CONSTRUCTION



ELEVATION AT ABUTMENTS  
(Looking East)

TEMPORARY SHEET PILING DETAIL

Notes: If the Contractor chooses to alter the temporary cantilevered sheet piling design requirements shown on the plans, a design submittal including plan details and calculations will be required for review and acceptance by the Engineer.  
Hard driving may be encountered during sheet piling installation. The Contractor should provide the appropriate driving equipment for the soil conditions indicated in the boring logs.



SECTION THRU INTEGRAL ABUTMENT

\*Included in the cost of Porous Granular Embankment (Special).

Notes: All staging sections are looking South.  
For quantity of Temporary Concrete Barrier, see Roadway Plans.  
Hatched areas indicate Removal of Existing Structures.

GENERAL DATA &  
TEMPORARY SHEET PILING  
F.A.S. RTE. 1774-SEC. 113(B-5, B-6)  
LOGAN COUNTY  
STATION 1723+50.00  
STRUCTURE NO. 054-0505

DESIGNED	Stephen M. Ryan
CHECKED	Chi-Cheung Chau
DRAWN	R. Sommer
CHECKED	SMR/CCC

October 14 2005  
EXAMINED *Thomas J. Demagala*  
PASSED *Ralph E. Anderson*  
ENGINEER OF BRIDGES AND STRUCTURES