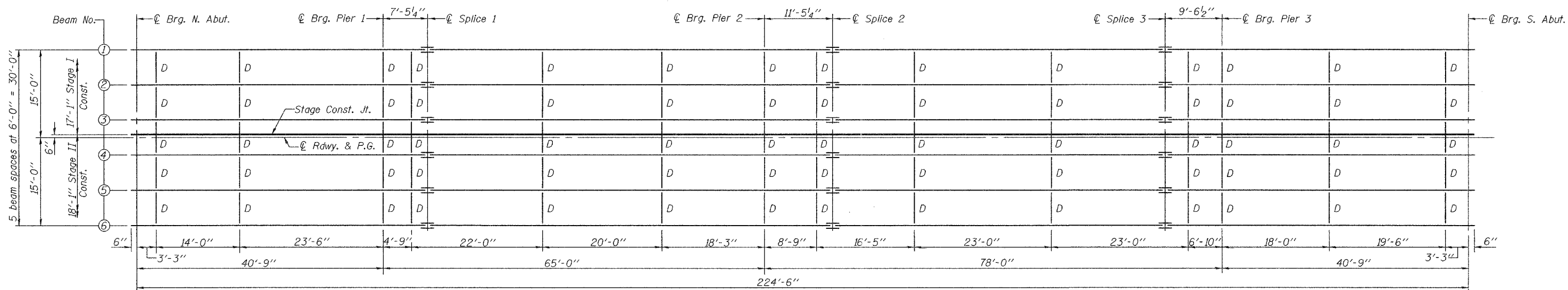


STATE OF ILLINOIS
DEPARTMENT OF TRANSPORTATION

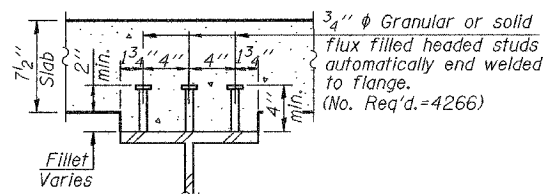
ROUTE NO.	SECTION	COUNTY	TOTAL SHEETS	SHEET NO.	SHEET NO. 9
F.A.S. 1774	113(B)-5, B-6)	LOGAN	60	26	18 SHEETS
FED. ROAD DIST. NO. 7	ILLINOIS	FED. AID PROJECT			

Contract #72760

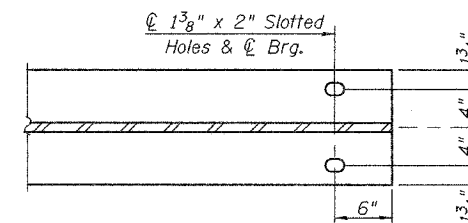


FRAMING PLAN

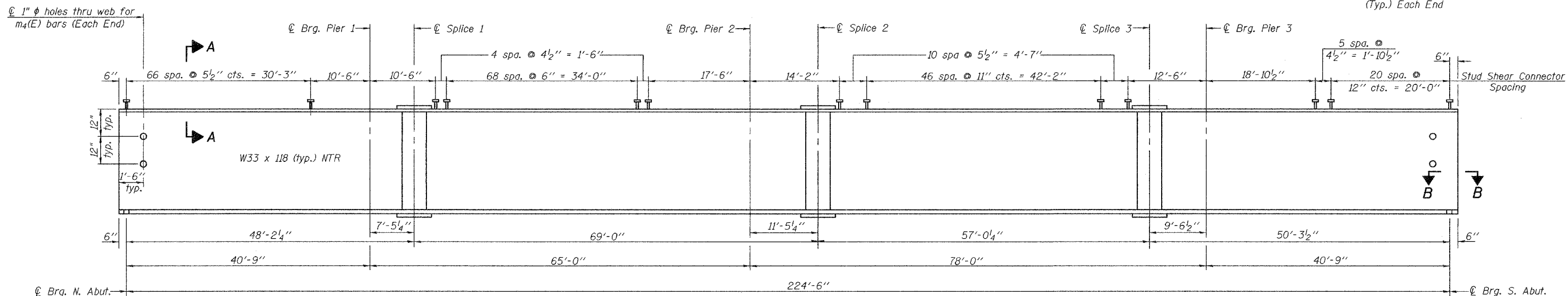
All beams shall be W33 x 118, AASHTO M 270, Grade 50W and NTR.
All other structural steel shall be AASHTO M 270, Grade 50W.



SECTION A-A



SECTION B-B
(Typ.) Each End



BEAM ELEVATION

*For fabrication only.

***TOP OF BEAM ELEVATIONS**

Location	Q N. Abut.	Q Brg. Pier 1	Q Splice 1	Q Brg. Pier 2	Q Splice 2	Q Splice 3	Q Brg. Pier 3	Q S. Abut.
Beam 1	568.67	568.62	568.62	568.63	568.64	568.63	568.64	568.67
Beam 2	568.78	568.73	568.73	568.74	568.75	568.74	568.75	568.78
Beam 3	568.88	568.83	568.82	568.84	568.84	568.84	568.84	568.88
Beam 4	568.88	568.83	568.82	568.84	568.84	568.84	568.84	568.88
Beam 5	568.78	568.73	568.73	568.74	568.75	568.74	568.75	568.78
Beam 6	568.67	568.62	568.62	568.63	568.64	568.63	568.64	568.67

Notes: "NTR" denotes members to which Notch Toughness Requirements are applicable.
For remainder of structural steel details see sheet 10 of 18.

DESIGNED	Stephen M. Ryan
CHECKED	Chi-Cheung Chau
DRAWN	R. Sommer
CHECKED	SMR/CCC

October 14, 2005
EXAMINED *Thomas J. Domagala*
PASSED *Ralph E. Anderson*
ENGINEER OF BRIDGE DESIGN
ENGINEER OF BRIDGES AND STRUCTURES

STRUCTURAL STEEL DETAILS
F.A.S. RTE. 1774-SEC. 113(B)-5,B-6)
LOGAN COUNTY
STATION 1723+50.00
STRUCTURE NO. 054-0505