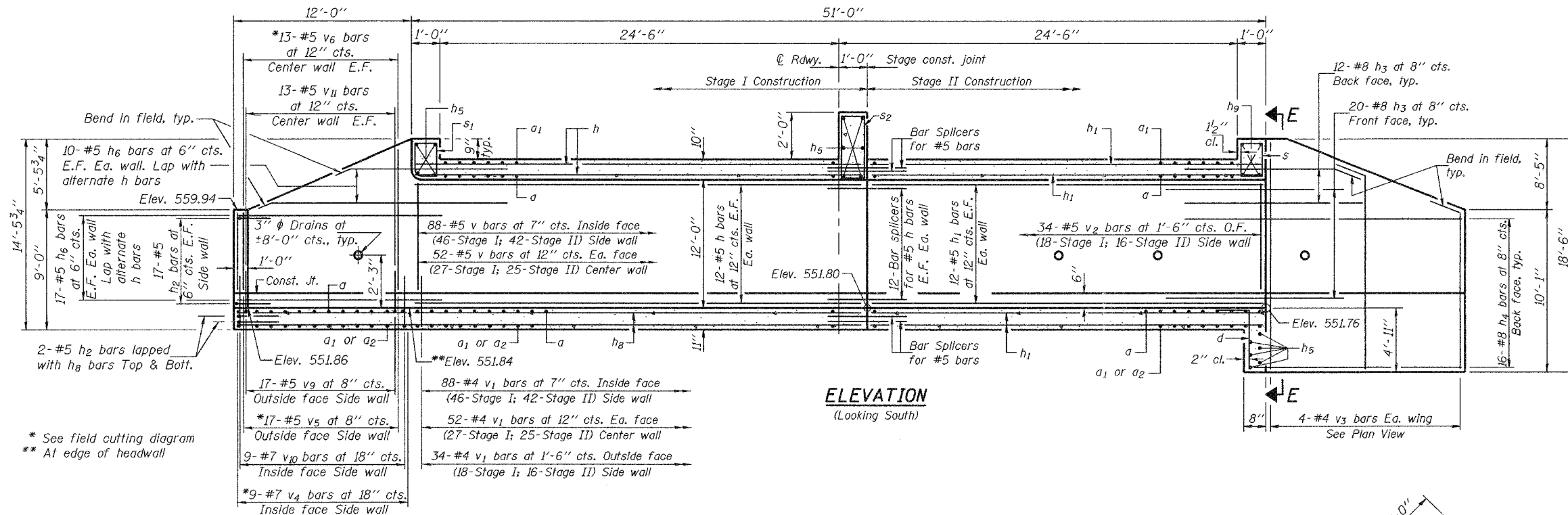


STATE OF ILLINOIS  
DEPARTMENT OF TRANSPORTATION

ROUTE NO.	SECTION	COUNTY	TOTAL SHEETS	SHEET	SHEET NO. 6
F.A.S. 1774	113(B-5, B-6)	LOGAN	60	41	9 SHEETS
FED. ROAD DIST. NO. 7	ALLIANCE	FED. AID PROJECT-			

Contract #72760

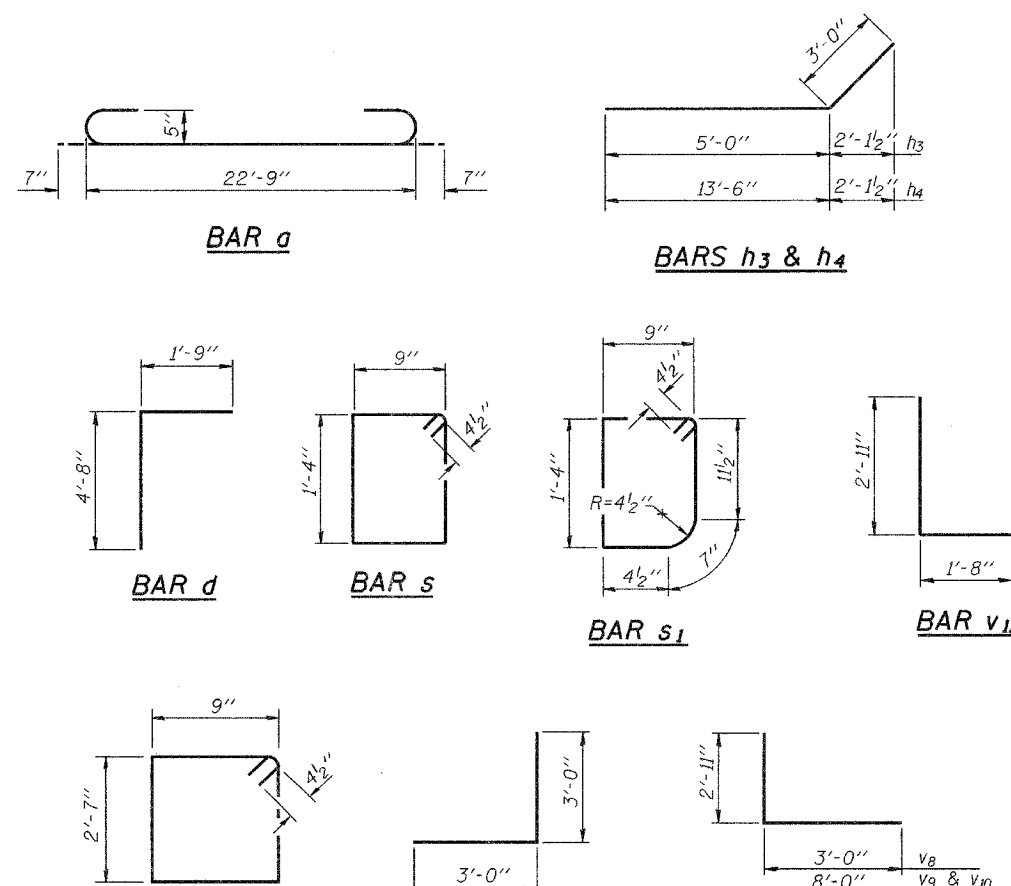


**ELEVATION**  
(Looking South)

**FIELD CUTTING DIAGRAM**  
Order v<sub>4</sub>, v<sub>5</sub> & v<sub>6</sub> full length. Cut as shown and use remainder of bars in opposite face.

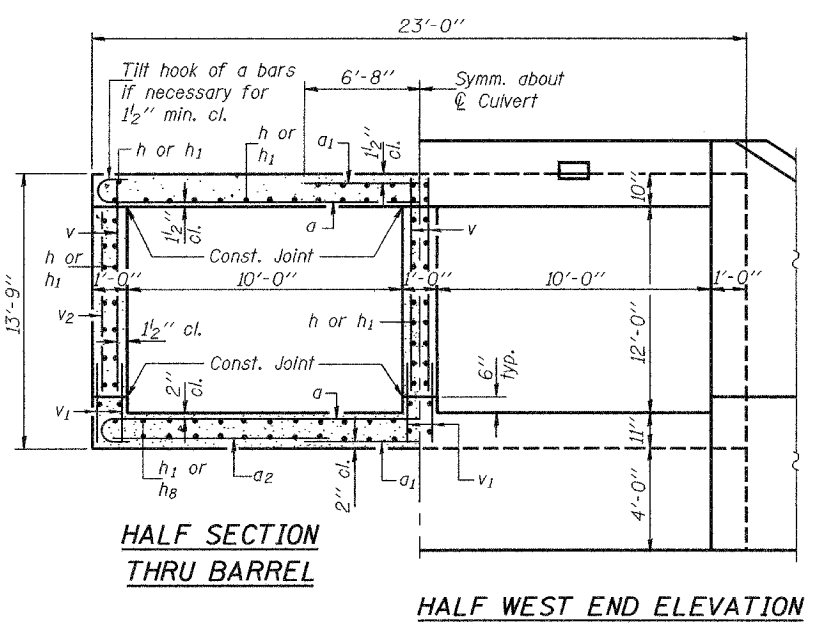
**BILL OF MATERIAL**

Bar	No.	Size	Length	Shape
a	196	#5	23'-11"	C
a <sub>1</sub>	181	#6	13'-4"	—
a <sub>2</sub>	64	#4	9'-8"	—
a <sub>3</sub>	16	#5	3'-0"	—
d	21	#4	6'-5"	L
h	112	#5	26'-3"	—
h <sub>1</sub>	156	#5	24'-3"	—
h <sub>2</sub>	76	#5	6'-0"	J
h <sub>3</sub>	64	#8	8'-0"	—
h <sub>4</sub>	32	#8	16'-6"	—
h <sub>5</sub>	16	#6	22'-9"	—
h <sub>6</sub>	162	#5	12'-9"	—
h <sub>7</sub>	18	#5	22'-9"	—
h <sub>8</sub>	44	#5	38'-3"	—
h <sub>9</sub>	4	#6	22'-6"	—
s	23	#4	4'-11"	□
s <sub>1</sub>	23	#4	4'-9"	□
s <sub>2</sub>	23	#4	7'-5"	□
v	280	#5	12'-1"	—
v <sub>1</sub>	348	#4	2'-11"	—
v <sub>2</sub>	68	#5	11'-3"	—
v <sub>3</sub>	8	#4	18'-3"	—
v <sub>4</sub>	9	#7	19'-10"	—
v <sub>5</sub>	17	#5	19'-10"	—
v <sub>6</sub>	13	#5	19'-10"	—
v <sub>7</sub>	39	#5	7'-4"	—
v <sub>8</sub>	39	#5	5'-11"	—
v <sub>9</sub>	34	#5	10'-11"	—
v <sub>10</sub>	18	#7	10'-11"	—
v <sub>11</sub>	26	#5	4'-7"	—
Concrete Box Culverts			Cu. Yd.	200.5
Reinforcement Bars			Pound	32150



**SECTION E-E**

**CULVERT DETAILS**  
F.A.S. RTE. 1774 - SEC. 113 (B-5,B-6)  
LOGAN COUNTY  
STATION 1727+87.37  
STRUCTURE NO. 054-2506



**HALF SECTION THRU BARREL**

**HALF WEST END ELEVATION**

DESIGNED	FT
CHECKED	SMR
DRAWN	h.t. duong
CHECKED	FT/SMR

Oct. 13, 2005  
EXAMINED *Thomas J. Damagala*  
PASSED *Ralph E. Anderson*  
ENGINEER OF BRIDGES AND STRUCTURES