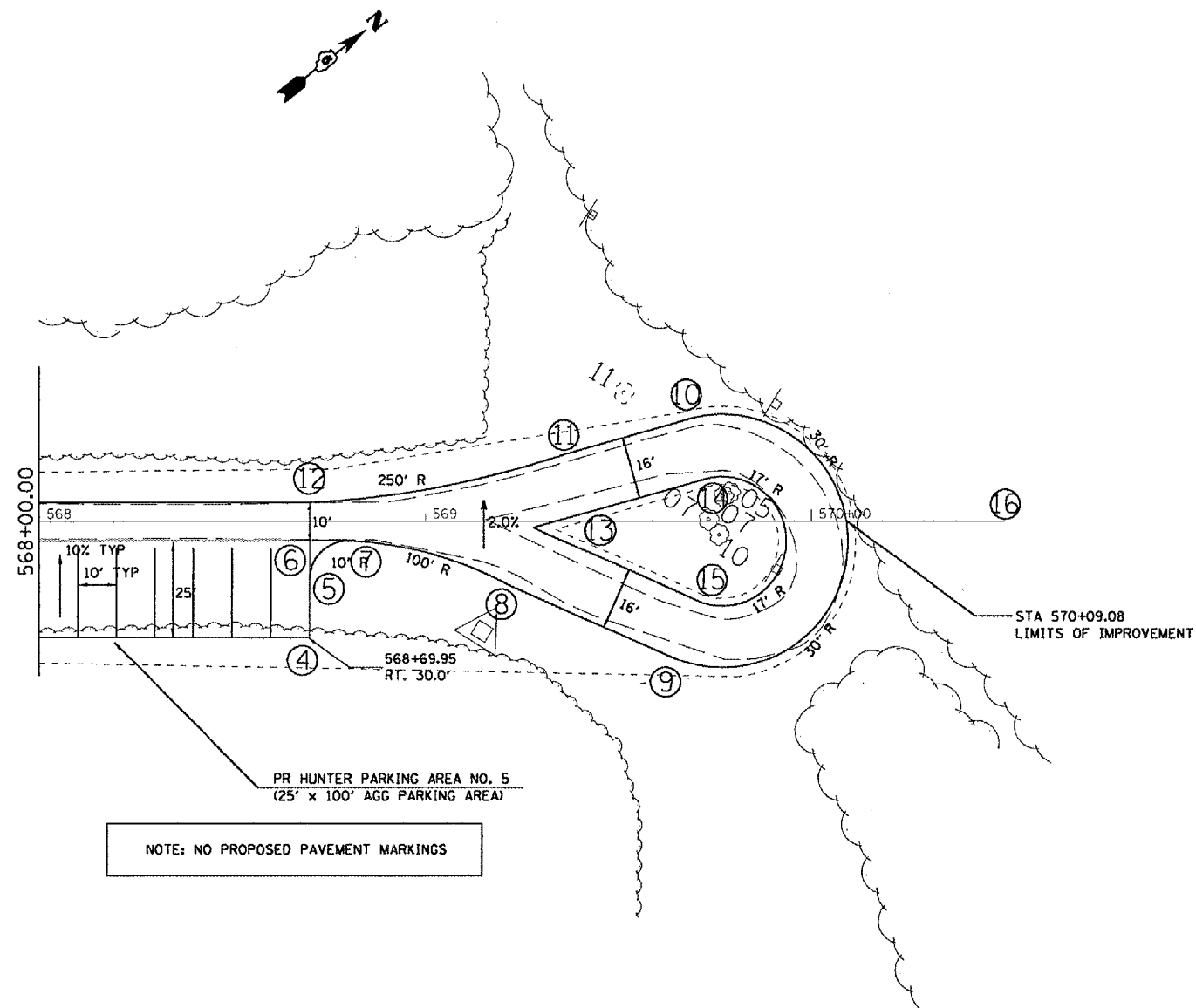


F.A. RTE.	SECTION	COUNTY	TOTAL SHEETS	SHEET NO.
*	**	SCHUYLER	139	49
STA.		TO STA.		
FED. ROAD DIST. NO.		ILLINOIS FED. AID PROJECT		
* OTHER ROUTE 1 (WEINBERG KING STATE PARK)				
** WEIN KING ST PK INT RDS 2				

POINT	STATION	OFFSET	N	E
1	567+59.98	RT. 5.00'	1302105.94	2091462.72
2	567+69.68	RT. 15.02'	1302102.77	2091476.52
3	567+69.95	RT. 29.81'	1302090.22	2091484.35
4	568+69.95	RT. 30.0'	1302143.17	2091569.18
5	568+69.98	RT. 14.98'	1302155.92	2091561.22
6	568+70.00	RT. 5.00'	1302164.38	2091555.94
7	568+80.52	RT. 5.00'	1302169.96	2091564.85
8	569+21.67	RT. 16.34'	1302182.21	2091605.74
9	569+65.29	RT. 35.71'	1302188.97	2091652.99
10	569+67.36	LT. 26.16'	1302242.49	2091621.88
11	569+36.56	LT. 17.40'	1302218.71	2091600.43
12	568+70.00	LT. 5.00'	1302172.85	2091550.63
13	569+28.02	RT. 1.66'	1302198.03	2091603.32
14	569+71.90	LT. 10.82'	1302231.90	2091633.87
15	569+71.22	RT. 20.86'	1302204.70	2091650.12
16	570+50.00	0.00'	1302264.22	2091705.79



NOTE: NO PROPOSED PAVEMENT MARKINGS

PLOT DATE = 8/24/2005  
 PLOT NAME = \\s010001\pub\72996\contract 2\8/24/05\hunteraccessrd.dgn  
 PLOT SCALE = 43.3735' / IN.  
 USER NAME = hantid

REVISIONS	
NAME	DATE

ILLINOIS DEPARTMENT OF TRANSPORTATION

**PLAN VIEW**

WEINBERG KING STATE PARK

SCALE: VERT. \_\_\_\_\_  
 HORIZ. \_\_\_\_\_

DATE \_\_\_\_\_

DRAWN BY BDK  
 CHECKED BY ZSH