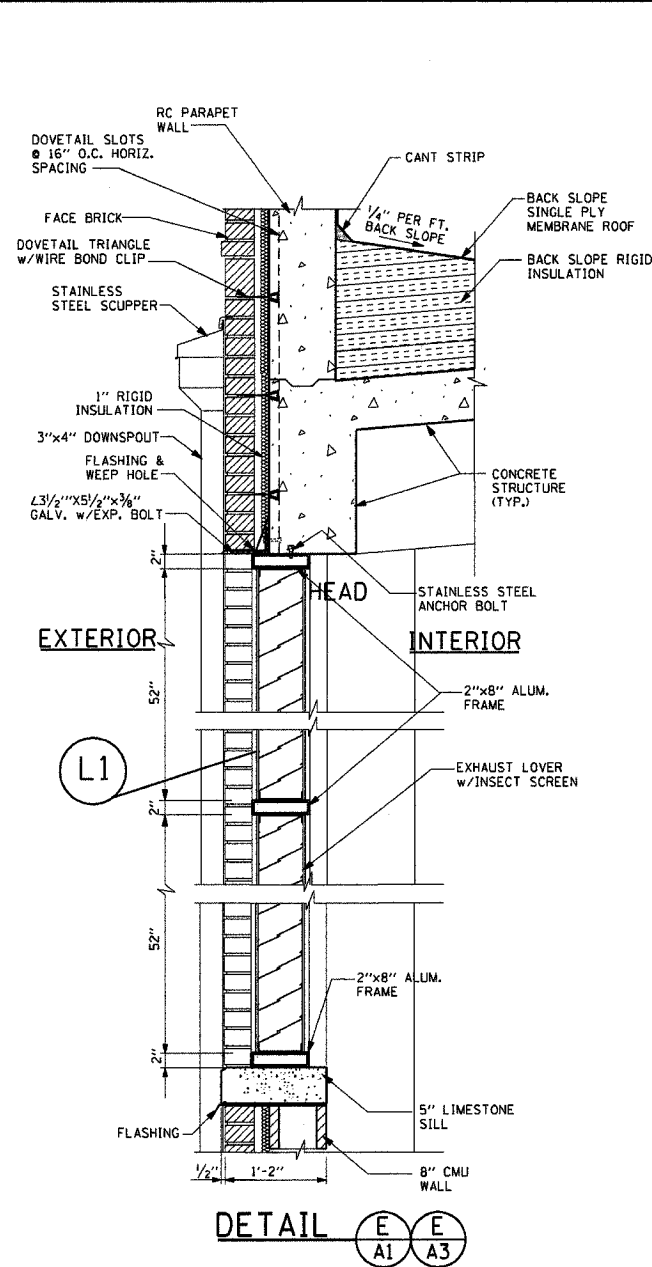
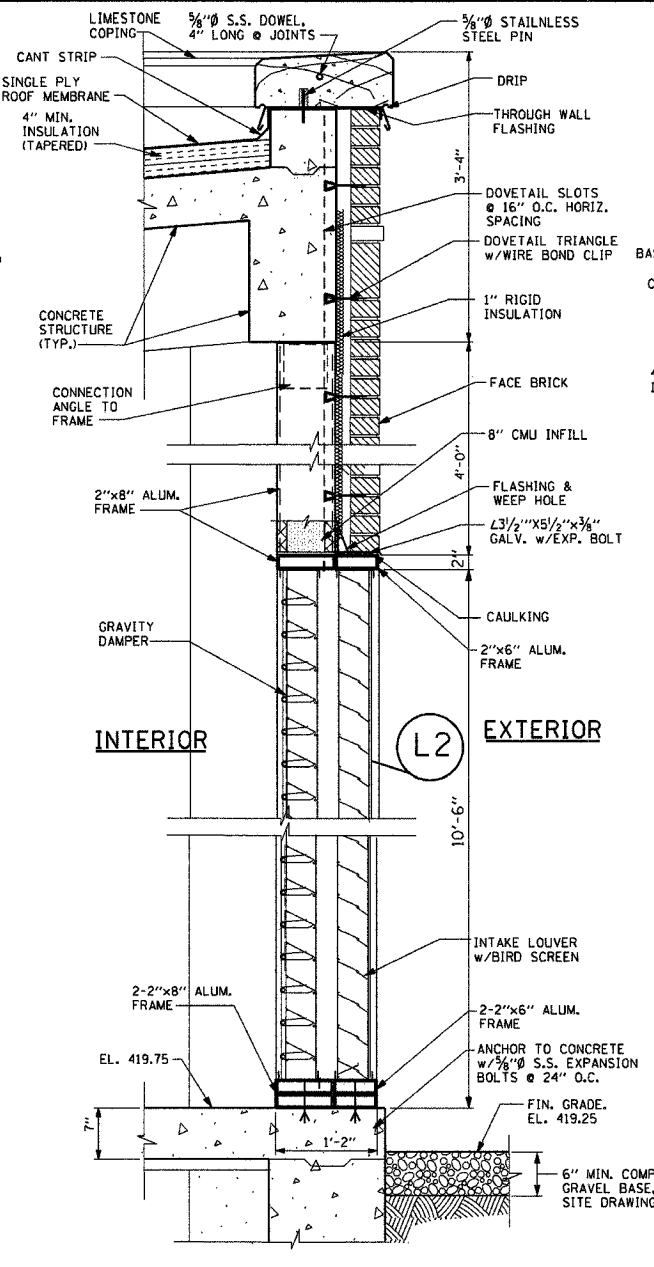


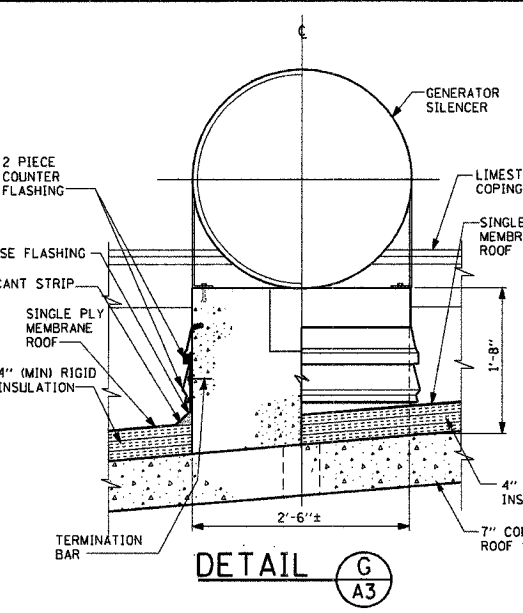
F.A.I. RTE.	SECTION	COUNTY	TOTAL SHEETS	SHEET NO.
70	82-(L)21T-17	ST. CLAIR	73	16
FED. ROAD DIST. NO.		ILLINOIS FED. AID PROJECT		



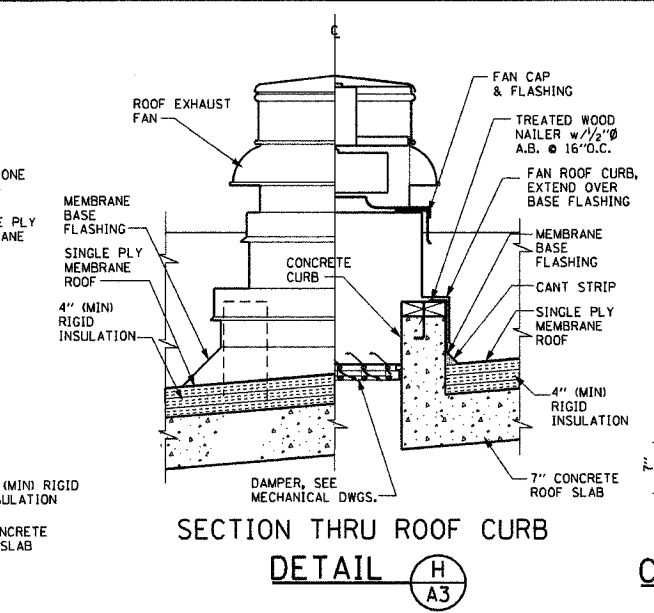
DETAIL E A1 A3



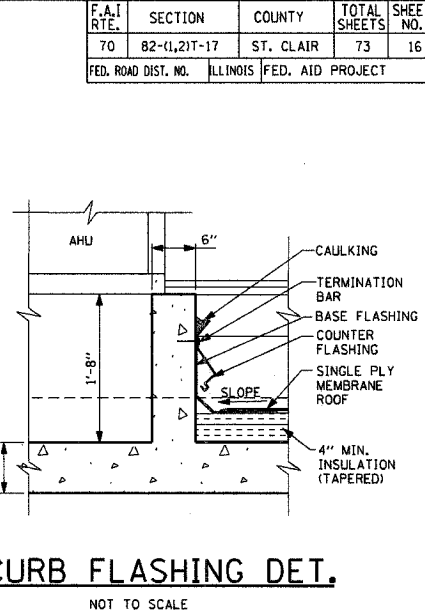
DETAIL F A1 A3



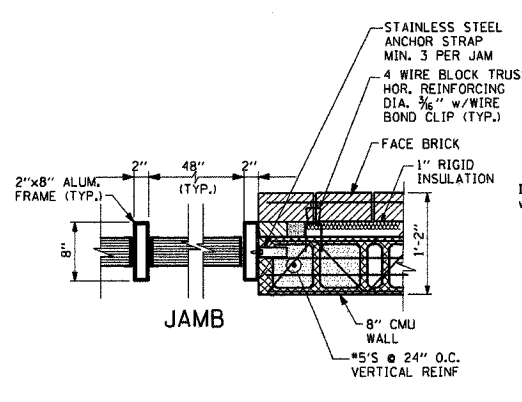
DETAIL G A3



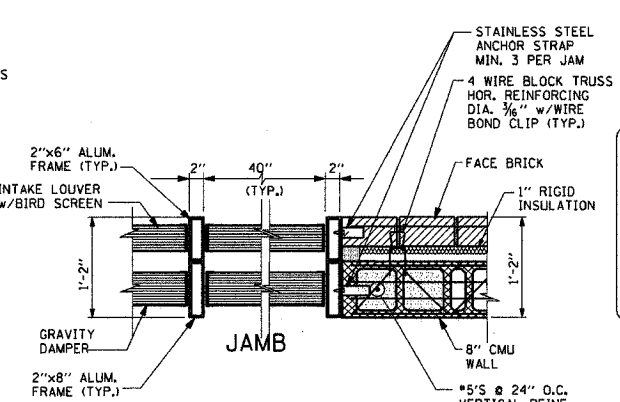
SECTION THRU ROOF CURB
DETAIL H A3



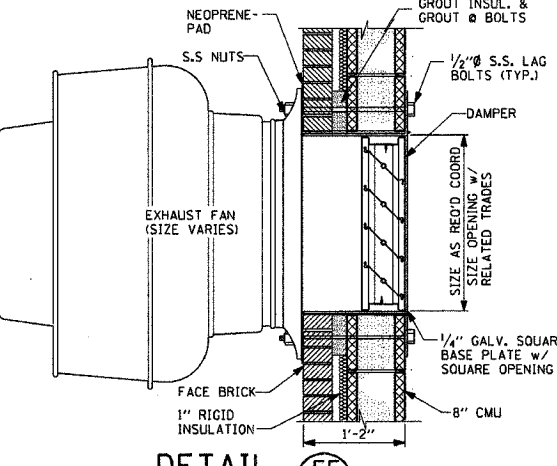
CURB FLASHING DET.
NOT TO SCALE



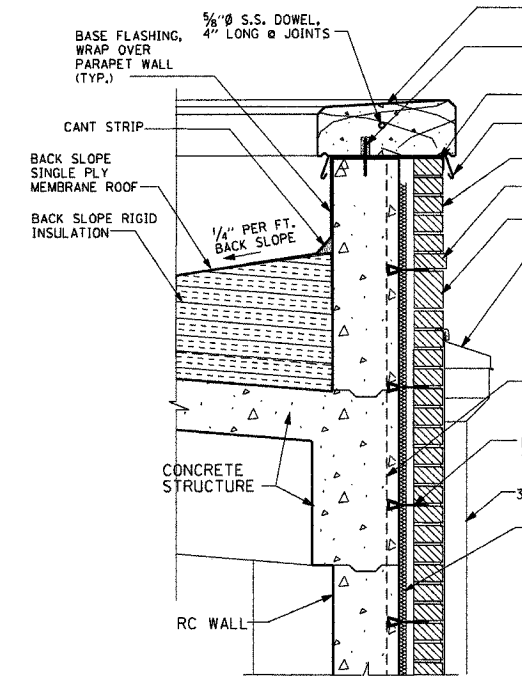
DETAIL EE A1



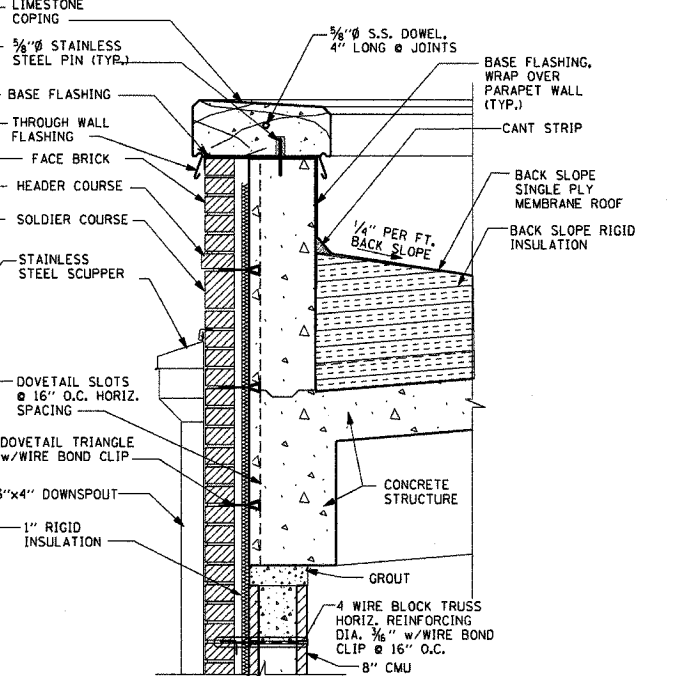
DETAIL FF A1



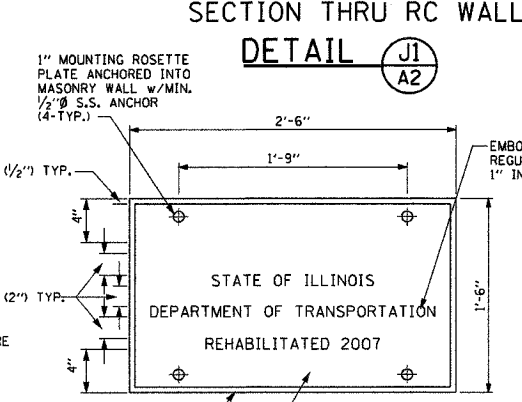
DETAIL EF A4
NOT TO SCALE



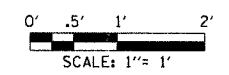
SECTION THRU RC WALL
DETAIL J1 A2



SECTION THRU CMU WALL
DETAIL J2 A2



IDENTIFICATION PLATE
NO SCALE



REVISIONS	
NAME	DATE

ILLINOIS DEPARTMENT OF TRANSPORTATION
BOWMAN AVENUE PUMP STATION
REHABILITATION

ARCHITECTURAL DETAILS

SCALE: AS SHOWN
DATE: 09-12-05
DRAWN BY: WP,CM
CHECKED BY: MW

ALVORD, BURDICK & HOWSON, L.L.C.
ENGINEERS
CHICAGO

DATE	
BY	
PLAN	
REVISIONS	
NO.	

DATE-TIME
DATE-SPEC
DATE-REF