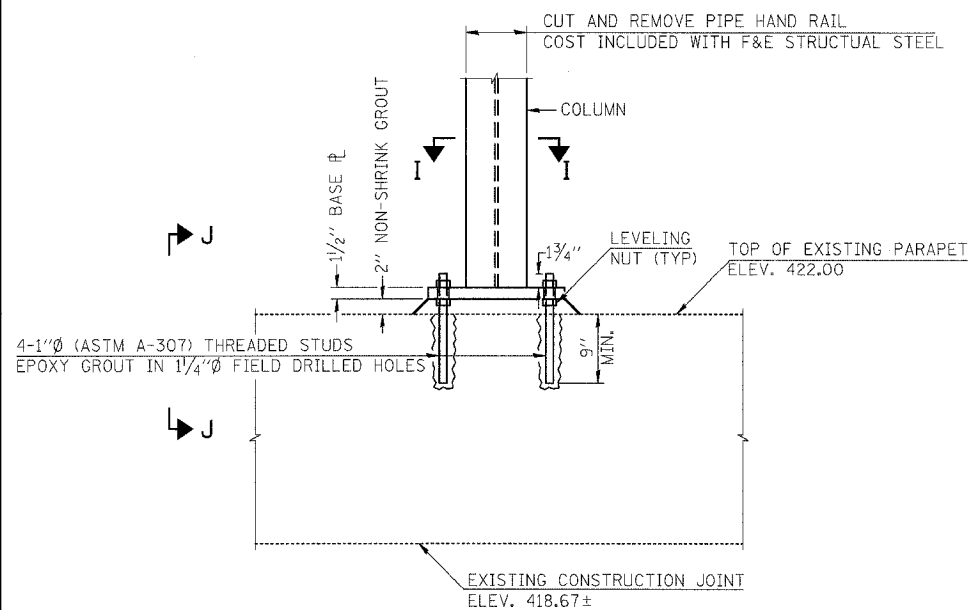
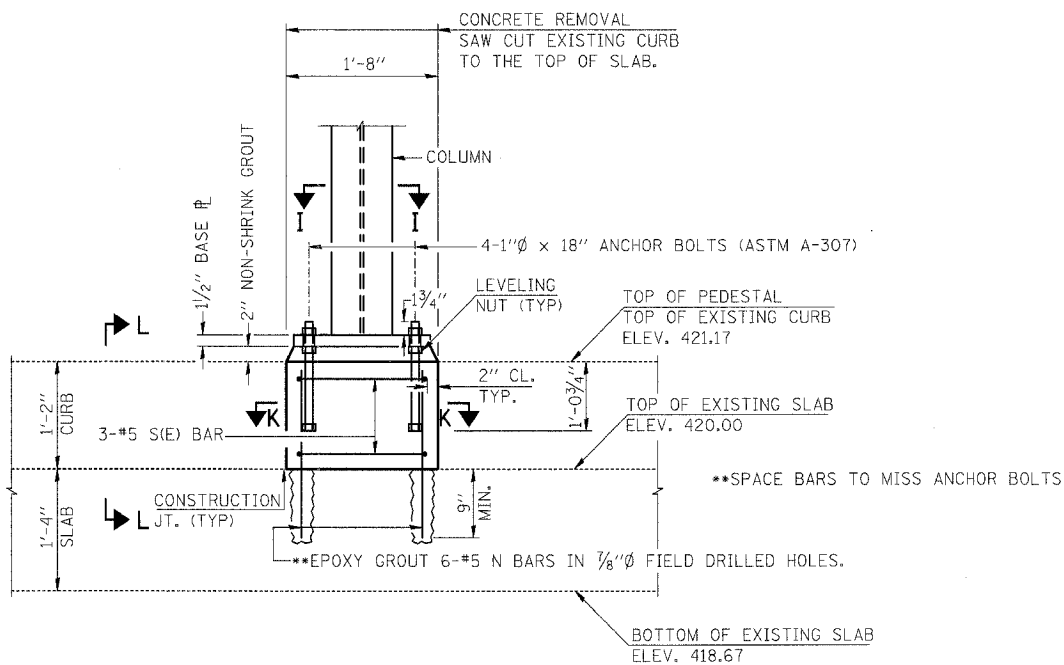


| | | | | |
|---------------------|-------------|------------------|--------------|-----------|
| F.A.I. R.T.E. | SECTION | COUNTY | TOTAL SHEETS | SHEET NO. |
| TO | 82-1,217-17 | ST. CLAIR | 77 | 26 |
| FED. ROAD DIST. NO. | ILLINOIS | FED. AID PROJECT | | |



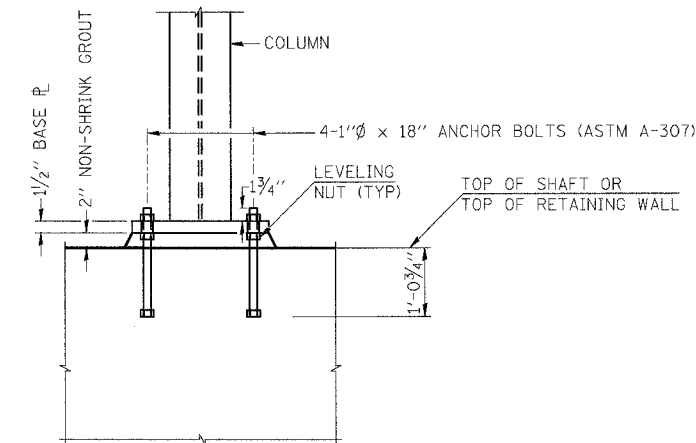
DETAIL E

(LOOKING SOUTH)
SCALE: 0' 6" 1' 2'



DETAIL F

(LOOKING SOUTH)
SCALE: 0' 6" 1' 2'



DETAIL G

(LOOKING SOUTH)
SCALE: 0' 6" 1' 2'

| | |
|----------|--|
| DATE | |
| DESIGNED | |
| CHECKED | |
| ALIGNED | |
| PLANNED | |
| NO. 1 | |
| NO. 2 | |
| NO. 3 | |
| NO. 4 | |
| NO. 5 | |
| NO. 6 | |
| NO. 7 | |
| NO. 8 | |
| NO. 9 | |
| NO. 10 | |

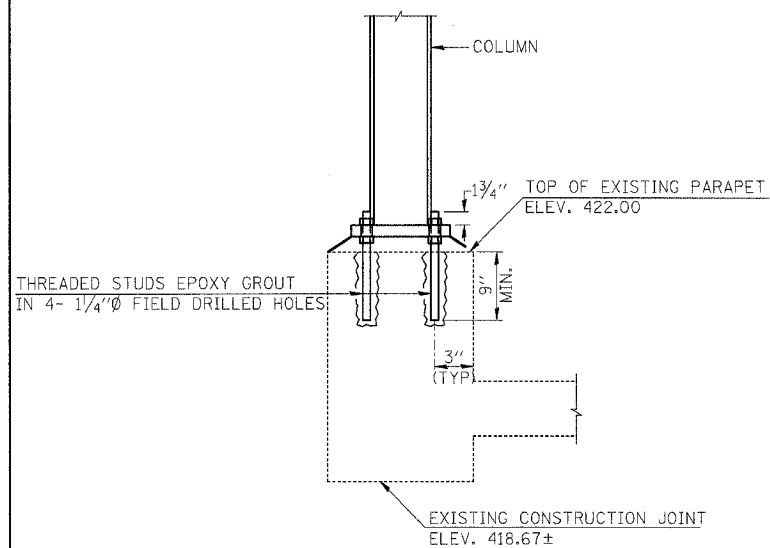
**COLUMN FOOTINGS
BILL OF MATERIAL**

| BAR | NO. | SIZE | LENGTH | SHAPE |
|---------------------------------|-----|---------|--------|-------|
| N | 18 | #5 | 1'-9" | — |
| S | 9 | #5 | 5'-1" | □ |
| SP | 3 | #4 | 8'-11" | |
| V ₂ | 36 | #6 | 8'-11" | — |
| CONCRETE REMOVAL | | CU. YD. | 0.2 | |
| REINFORCEMENT BARS EPOXY COATED | | POUND | 730 | |
| CLASS SI CONCRETE | | CU. YD. | 0.3 | |
| DRILLED SHAFT IN SOIL, 24" | | FT | 28 | |

* LENGTH IS THE HEIGHT OF SPIRAL

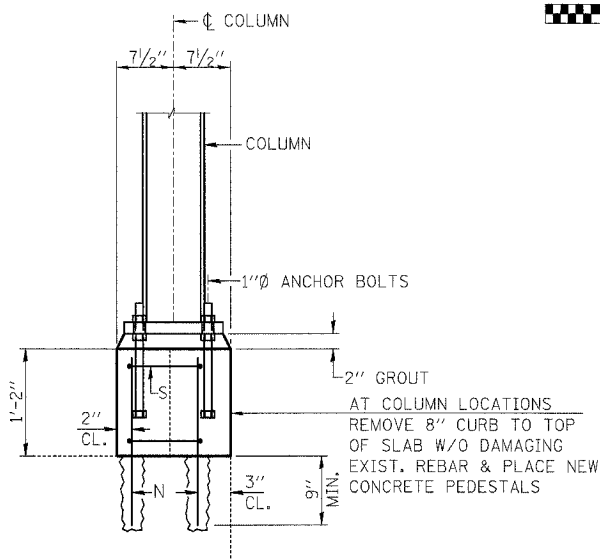
NOTES:

- FOR LOCATIONS OF DETAILS E, F AND G SEE SHEET S8
- SEE ADDITIONAL NOTES ON SHEET S11
- ALL ANCHOR BOLTS IN NEW CONCRETE SHALL BE CAST IN PLACE.



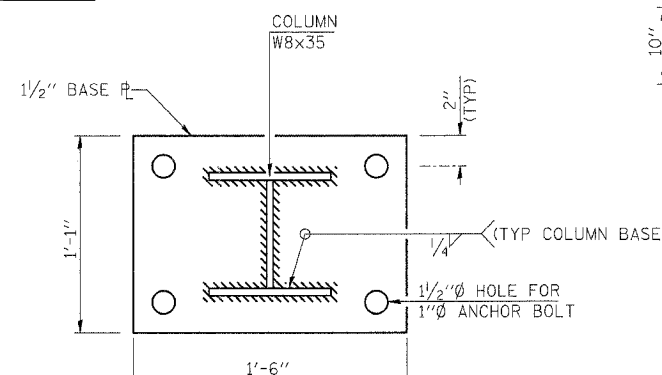
VIEW J-J

(LOOKING WEST)
SCALE: 0' 6" 1' 2'



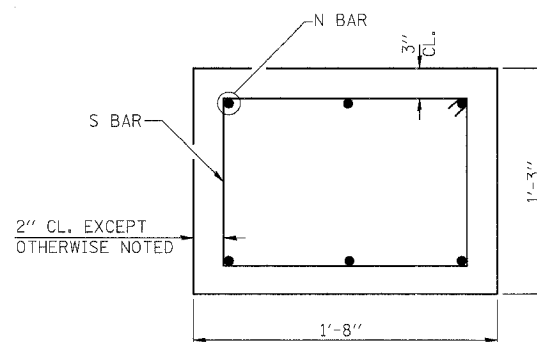
VIEW L-L

(LOOKING WEST)
SCALE: 0' 6" 1' 2'



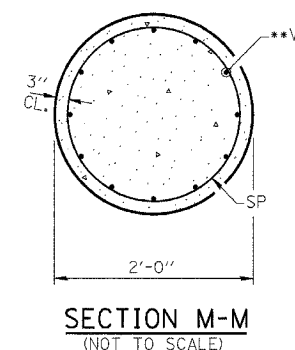
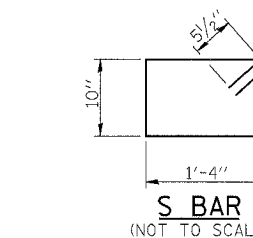
SECTION I-I

SCALE: 0' 3" 6" 1'



SECTION K-K

SCALE: 0' 3" 6" 1'



Michael J. Xy
9-7-05

LIN ENGINEERING, LTD.

S9

| REVISIONS | |
|-----------|------|
| NAME | DATE |
| | |
| | |
| | |
| | |
| | |
| | |

ILLINOIS DEPARTMENT OF TRANSPORTATION
**BOWMAN AVENUE PUMP STATION
REHABILITATION**
OVERHEAD CRANE FRAMING
SCALE: AS SHOWN
DATE: 09-12-05
DRAWN BY: JMD
CHECKED BY: KC
PLOT DATE: *DATE-TIME*