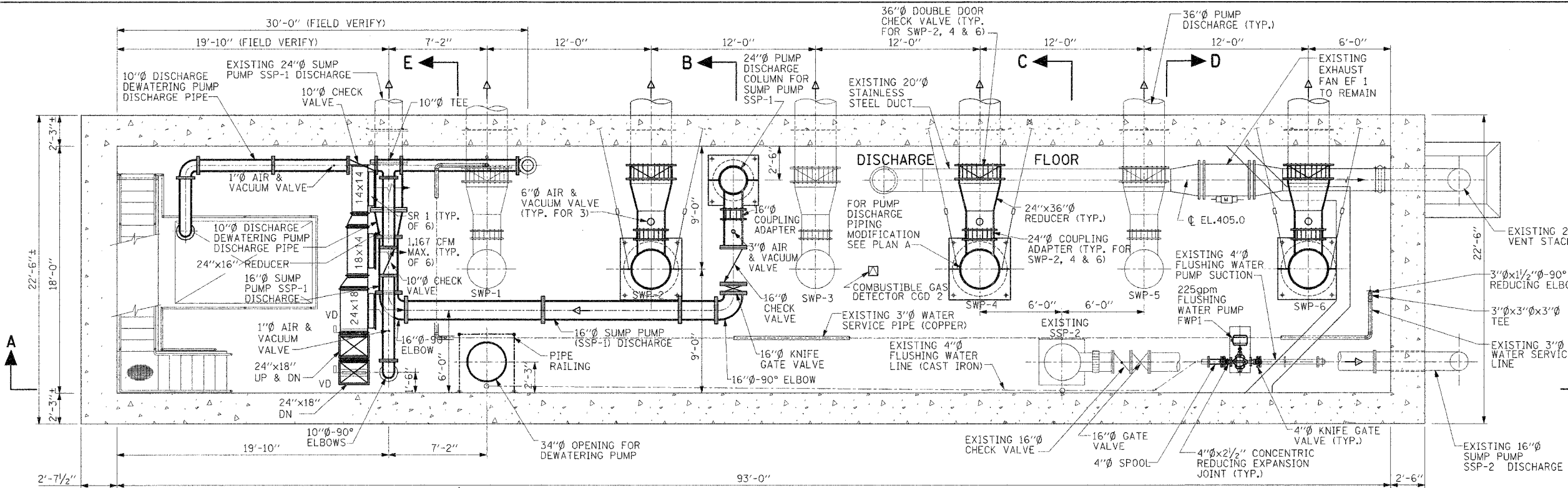
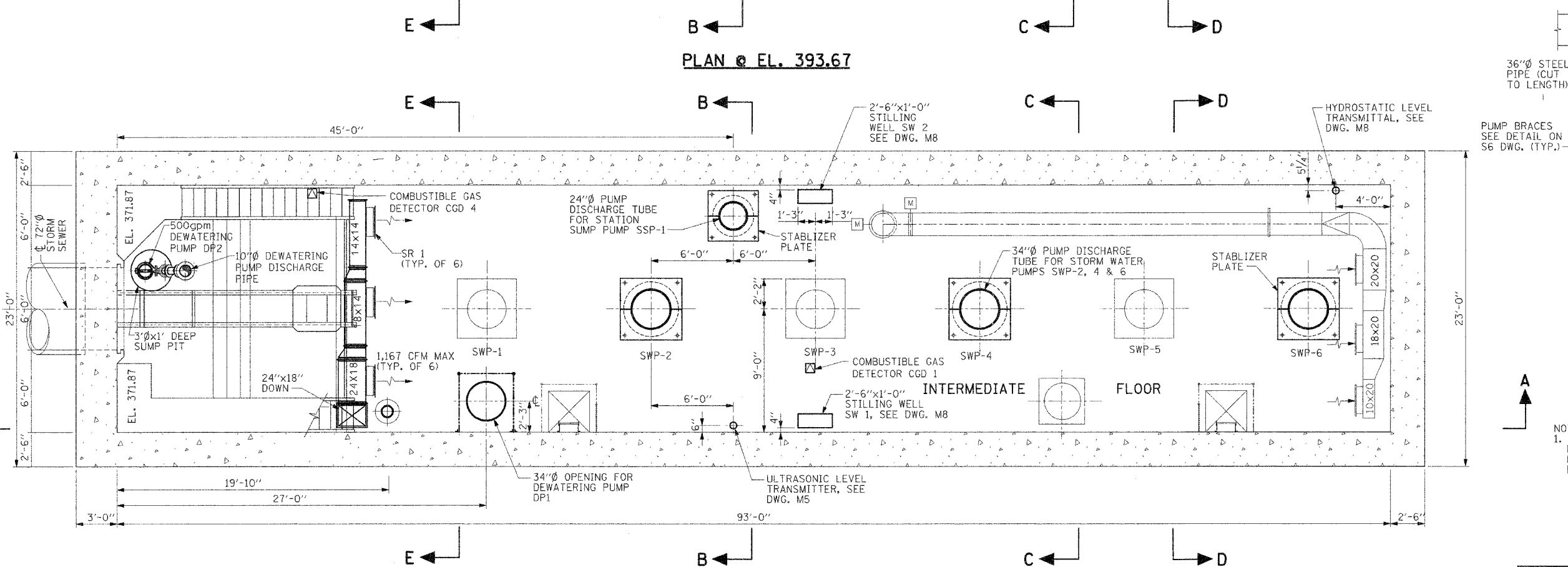


| | | | | |
|---------------------|---------------------------|-----------|--------------|-----------|
| F.A.I. RTE. | SECTION | COUNTY | TOTAL SHEETS | SHEET NO. |
| 70 | 82-1,217-17 | ST. CLAIR | 77 | 35 |
| FED. ROAD DIST. NO. | ILLINOIS FED. AID PROJECT | | | |

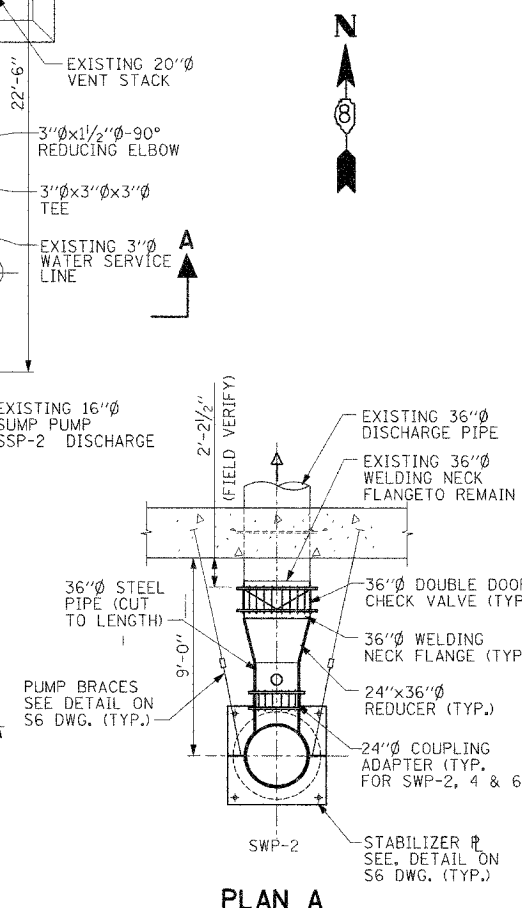
| | |
|------|----|
| DATE | BY |
| | |
| DATE | BY |
| | |
| DATE | BY |
| | |
| DATE | BY |
| | |
| DATE | BY |
| | |



PLAN @ EL. 393.67

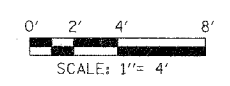


PLAN @ EL. 380.0



PLAN A

NOTE:
1. FOR ELECTRICAL INSULATING FLANGE FITTINGS FOR CATHODIC PROTECTION OF PUMP DISCHARGE HEADERS, SEE CP1 & CP2 DRAWINGS.



- NOTE: GENERAL NOTES FOR STILLING WELLS
1. STILLING WELL NO. 1 FOR FLOATS 100A, B, C, D, E, F, G, H, I, J & K.
 2. STILLING WELL NO. 2 FOR FLOATS 101A, B, C, D, E, F, G, H, I & J.
 3. SEE DWG. E19 FOR DETAIL.

M2

| REVISIONS | |
|-----------|------|
| NAME | DATE |
| | |
| | |
| | |
| | |
| | |

ILLINOIS DEPARTMENT OF TRANSPORTATION
**BOWMAN AVENUE PUMP STATION
 REHABILITATION**
MECHANICAL PLANS

SCALE: AS SHOWN
 DATE: 09-12-05
 PLOT DATE: *DATE-TIME*

DRAWN BY: CTM
 CHECKED BY: KC

ALVORD, BURDICK & HOWSON, L.L.C.
 ENGINEERS CHICAGO

DATEPLOT
 DATEPLOT
 DATEPLOT
 DATEPLOT