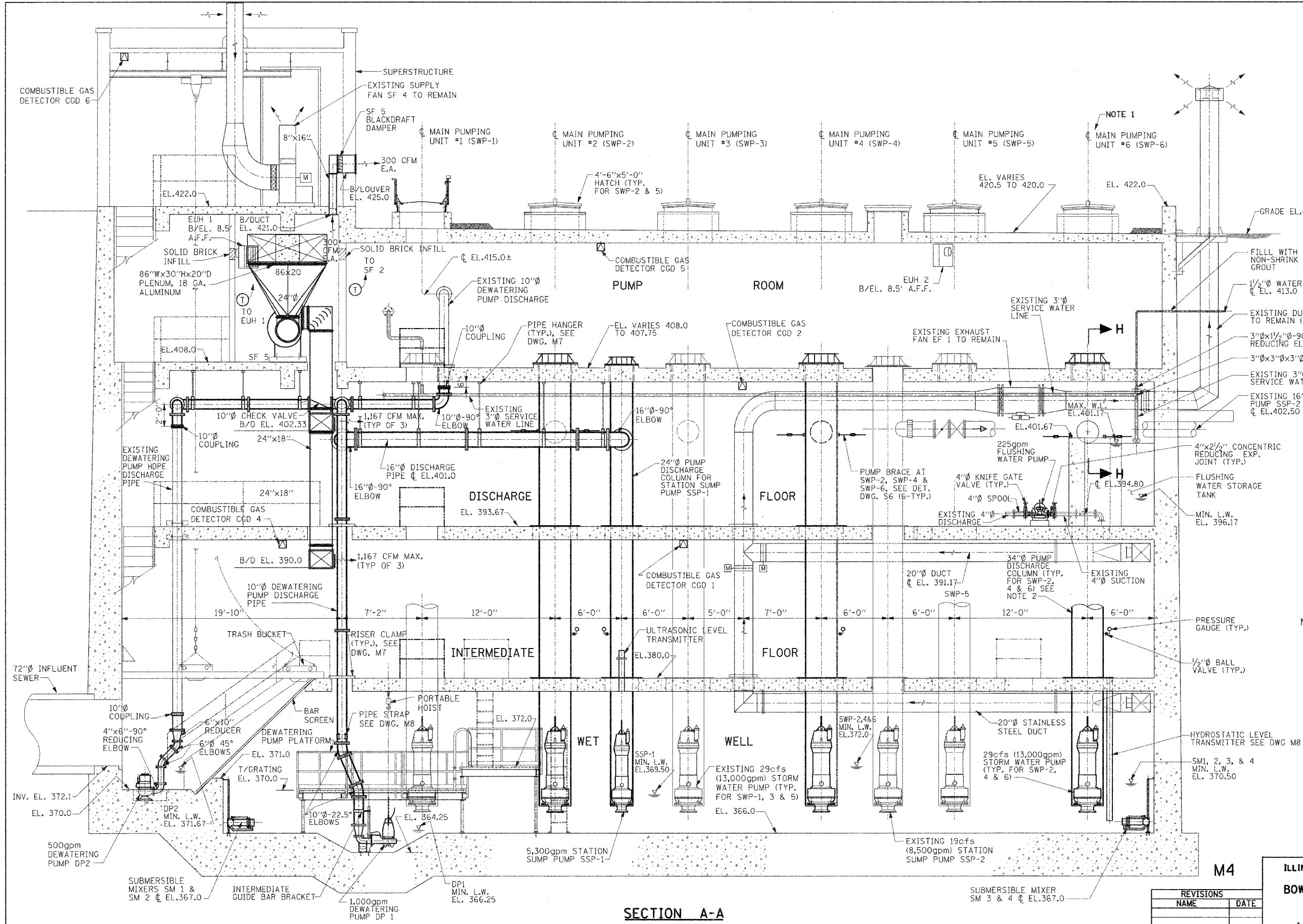
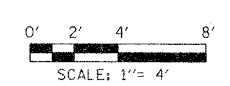


F.A.I. R.T.E.	SECTION	COUNTY	TOTAL SHEET
70	82-1,21T-17	ST. CLAIR	77
FED. ROAD DIST. NO.	ILLINOIS	FED. AID PROJECT	37



- NOTE:**
- SEE DRAWING M5 FOR ROOF STAIR ACCESS SECTION
 - TUBE PUMP BASE PLATE, COLUMN & DISCHARGE STUB SIZES SHALL BE SIZED TO FIT EXISTING FLOOR OPENING DIMENSIONS WITHOUT INCREASING OPENING SIZE.
 - PROVIDE STAINLESS STEEL HOOKS WITH KELLEM'S CABLE SUPPORTS ON WALLS FOR MIXER CABLES AS REQUIRED.



REVISIONS	
NAME	DATE

ILLINOIS DEPARTMENT OF TRANSPORTATION
BOWMAN AVENUE PUMP STATION
REHABILITATION
MECHANICAL SECTIONS

SCALE: AS SHOWN
DATE: 09-12-05
PLOT DATE: *DATE-TIME*

DRAWN BY: CTM
CHECKED BY: KC

SECTION A-A

ALVORD, BURDICK & HOWSON, L.L.C.
ENGINEERS CHICAGO

DATE	BY

REVISIONS
DATE
BY
CHECKED