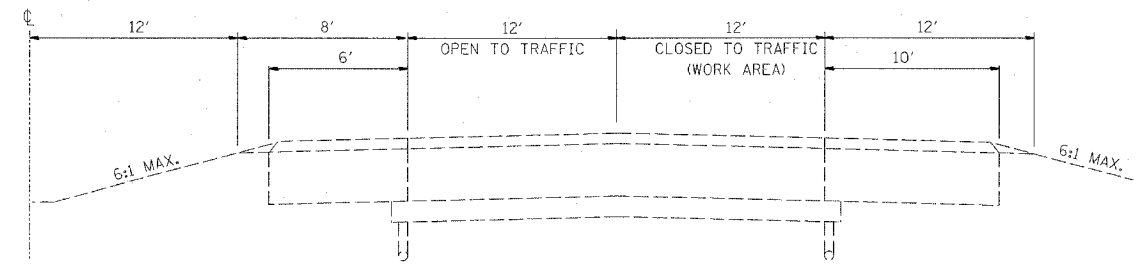
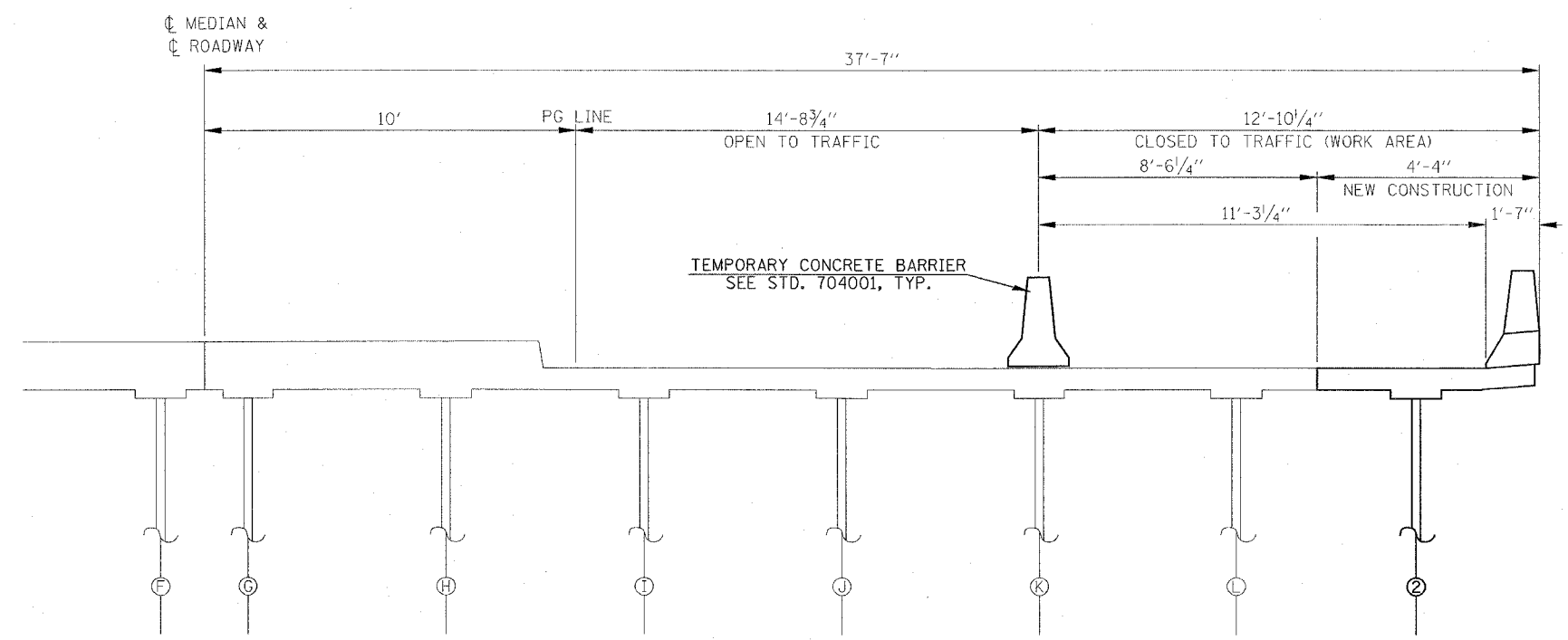


F.A.I. RTE.	SECTION	COUNTY	TOTAL SHEETS	SHEET NO.
55/70		MADISON	11	4
STA.		TO STA.		
FED. ROAD DIST. NO.	ILLINOIS FED. AID PROJECT			

• 60-10HB-4R-HDF-4



F.A.I. 55/70 SOUTHBOUND
 STA. 1348+00 TO 1360+00
 SHOULDER WIDTHS NARROW UNDER STRUCTURE



PAVEMENT MARKING SCHEDULE	
	PAINT
	4" MARKINGS
LOCATION	EDGE LINE
	WHITE
	FOOT
IL ROUTE 162	57

NOTE: THE PROPOSED EDGE LINE SHALL BE PLACED AT THE SAME LOCATION AS THE EXISTING EDGE LINE.

REVISIONS	
NAME	DATE

ILLINOIS DEPARTMENT OF TRANSPORTATION
TYPICALS AND PAVEMENT MARKING SCHEDULE
 FAI ROUTE 55/70
 SECTION 60-10HB-4R-HDF-4
 MADISON COUNTY
 SCALE: VERT. _____
 HORIZ. _____
 DATE _____
 DRAWN BY _____
 CHECKED BY _____

IL 162 WESTBOUND

PLOT DATE = 8/31/2005
 FILE NAME = c:\projects\aed\1105\plan\plan1105.dgn
 PLOT SCALE = 1/8" = 1'-0"
 REFERENCE = N/A