

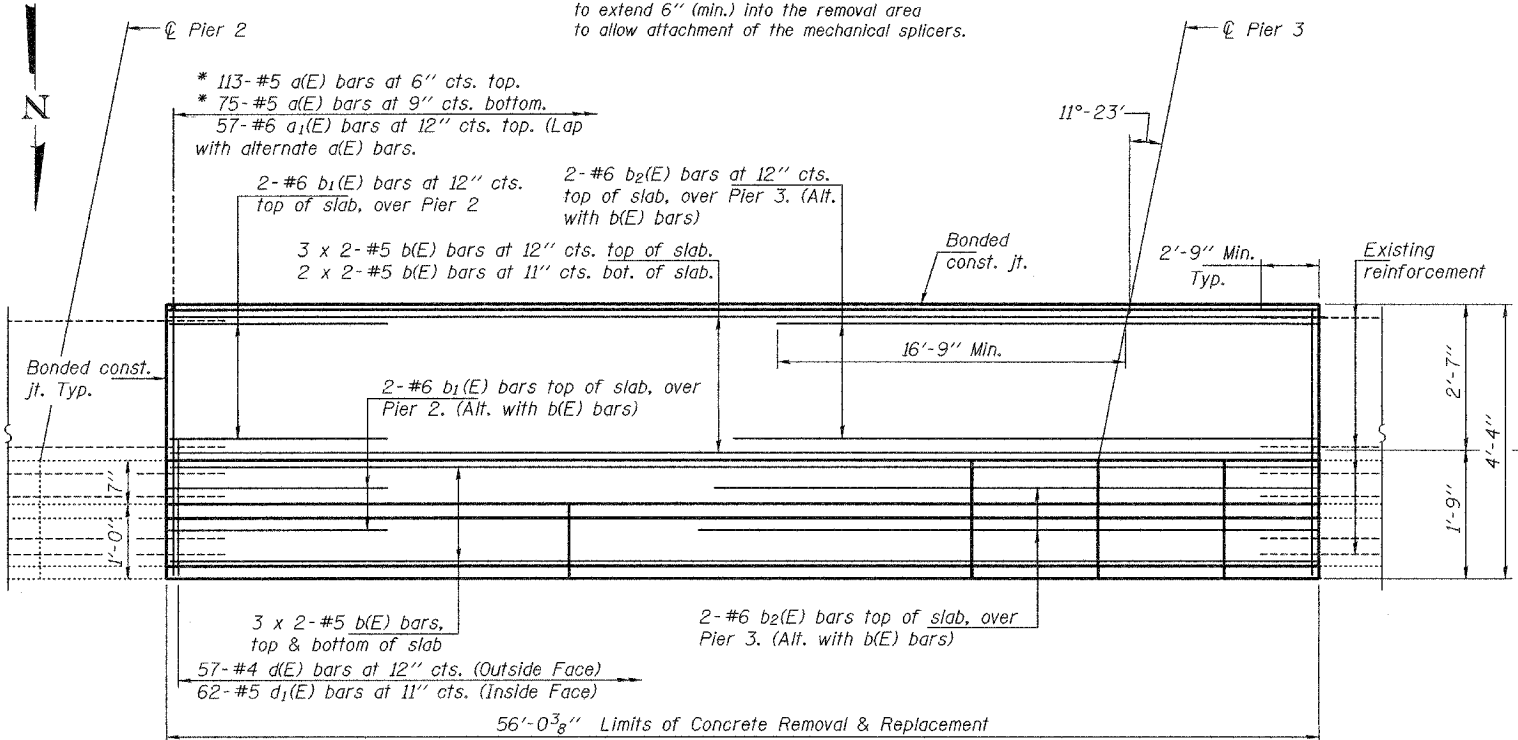
STATE OF ILLINOIS  
DEPARTMENT OF TRANSPORTATION

ROUTE NO.	SECTION	COUNTY	SHEET NO.	SHEET
		MADISON	7	5 SHEETS
FED. ROAD DIST. NO. 7	ILLINOIS	FED. AID PROJECT-		

Contract Number: 76968

Notes:  
Removal areas shall be saw cut 3/4" prior to the removal of concrete.  
Existing reinforcement bars extending into the removed area shall be cut as shown, cleaned, straightened and incorporated into the new construction.  
Any reinforcement bars that are damaged during concrete removal shall be replaced with an approved bar splicer or anchorage system. Cost incidental to "Concrete Removal".  
Bars indicated thus 3 x 2-#5 etc. indicates 3 lines of bars with 2 lengths per line.

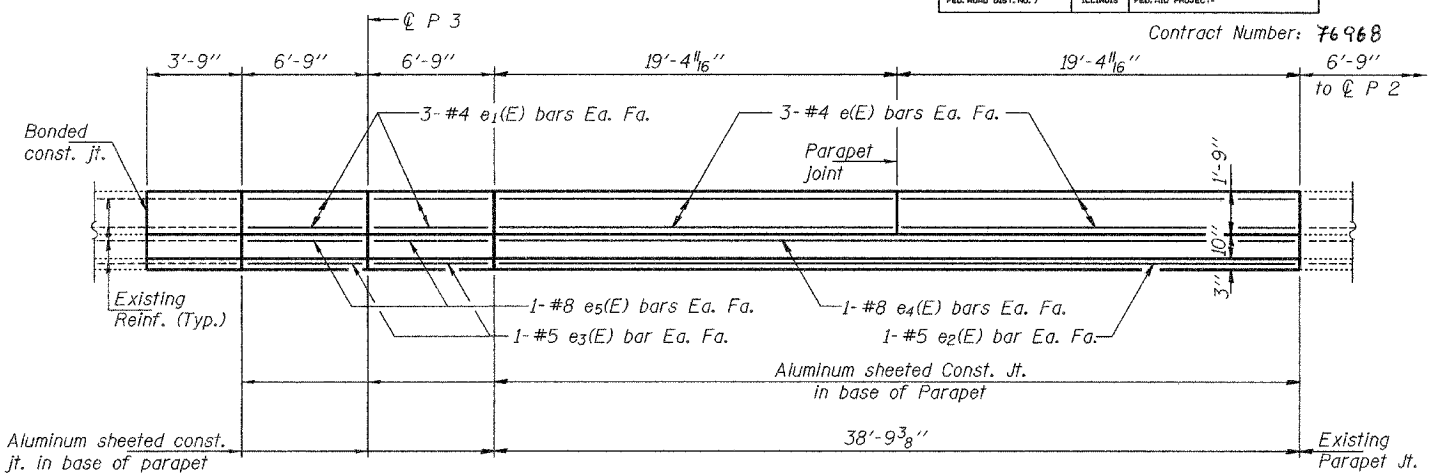
\* Attach to existing reinforcement with mechanical splicers. Existing reinforcement to extend 6" (min.) into the removal area to allow attachment of the mechanical splicers.



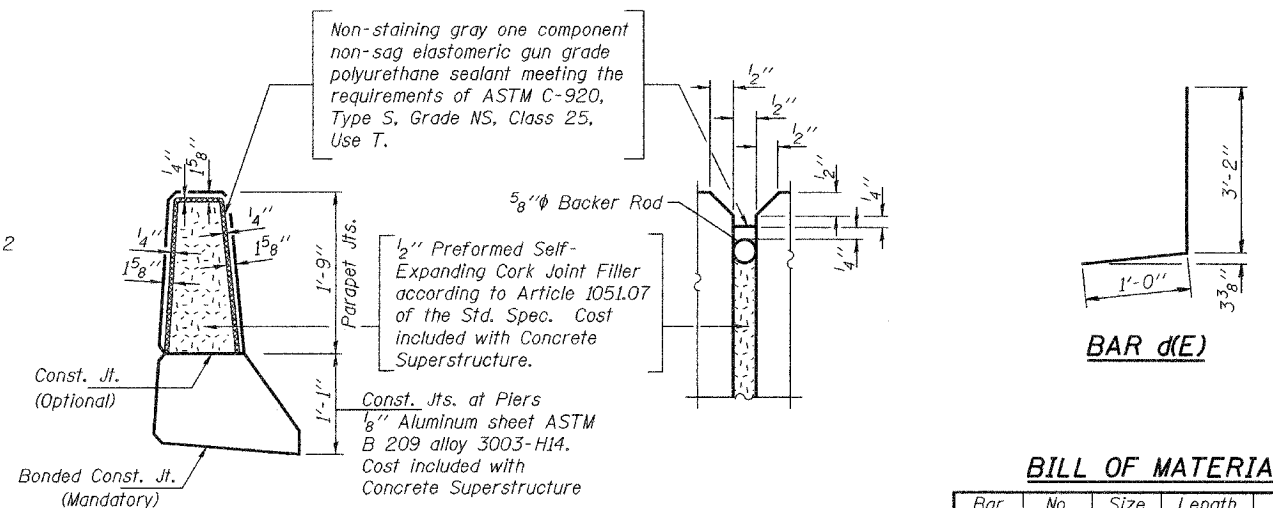
PARTIAL PLAN

MIN. BAR LAPS  
#5 Bar = 2'-2"  
#6 Bar = 2'-7"

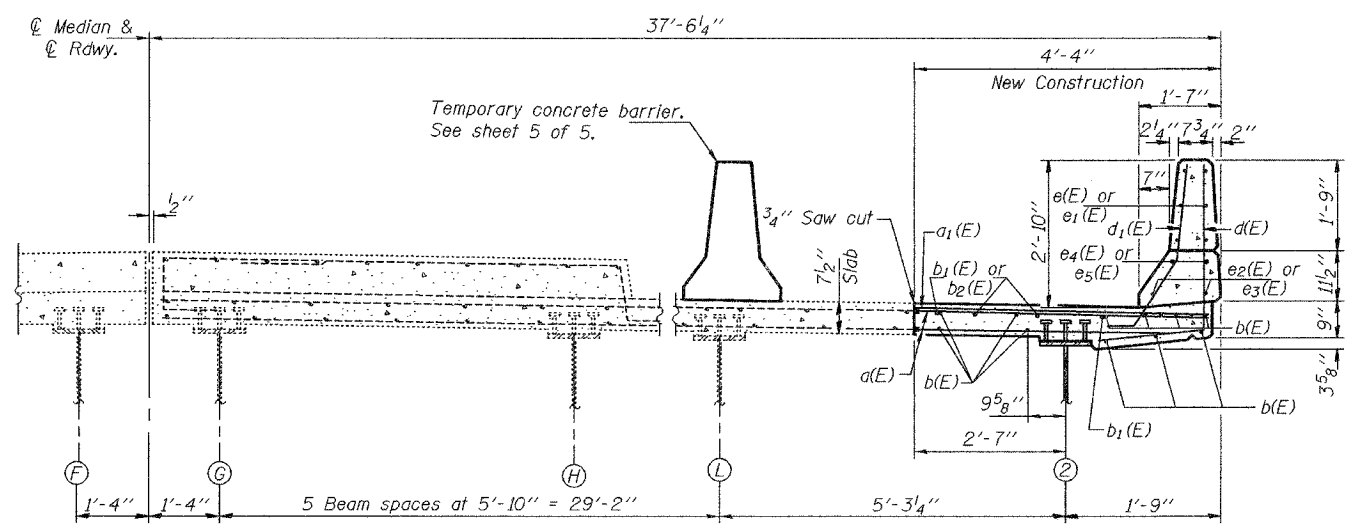
DESIGNED	SJB	EXAMINED	SEPTEMBER 29, 2005
CHECKED	ATH	PASSED	ENGINEER OF STRUCTURAL SERVICES
DRAWN	balliva		ENGINEER OF BRIDGES AND STRUCTURES
CHECKED	SJB ATH		



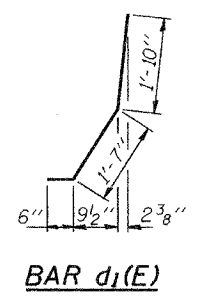
INSIDE ELEVATION OF PARAPET  
(Looking North)



PARAPET JOINT DETAILS



CROSS SECTION  
(Looking West)



BAR d1(E)

BILL OF MATERIAL

Bar	No.	Size	Length	Shape
a(E)	188	#5	3'-5"	—
a1(E)	57	#6	4'-0"	—
b(E)	22	#5	29'-1"	—
b(E)	4	#6	10'-0"	—
b2(E)	4	#6	27'-3"	—
d(E)	57	#4	4'-2"	J
d1(E)	62	#5	3'-11"	J
e(E)	12	#4	19'-1"	—
e1(E)	12	#4	6'-5"	—
e2(E)	2	#5	19'-1"	—
e3(E)	4	#5	6'-5"	—
e4(E)	2	#8	19'-1"	—
e5(E)	4	#8	6'-5"	—
Concrete Removal			Cu. Yd.	11.6
Concrete Superstructure			Cu. Yd.	11.6
Reinforcement Bars, Epoxy Coated			Lbs.	2770

Reinforcement bars designated (E) shall be epoxy coated.

SUPERSTRUCTURE DETAILS  
ILL. RTE 162 OVER FAI RTE. 70  
MADISON COUNTY  
S.N. 060-0139