

SECTION	COUNTY	TOTAL SHEETS	SHEET NO.
02-00034-00-BT	DUPAGE	108	20
STA.	TO STA.		
IDOT PROJECT NO. M-8003(216)			
SALT CREEK GREENWAY TRAIL			
CONTRACT NO. 83714			

PROP. CURVE CL2-25
 PI STA = 22+697.989
 N = 41,575.553
 E = 7,725.592
 $\Delta = 27^\circ 49' 28''$ (LT)
 R = 30,000 m
 T = 7.431 m
 L = 14.569 m
 E = 0.907 m

PROP. CURVE CL2-26
 PI STA = 22+728.934
 N = 41,558.864
 E = 7,751.999
 $\Delta = 7^\circ 56' 16''$ (LT)
 R = 30,000 m
 T = 2.081 m
 L = 4.156 m
 E = 0.072 m

PROP. CURVE CL2-27
 PI STA = 22+750.040
 N = 41,550.157
 E = 7,771.232
 $\Delta = 34^\circ 54' 42''$ (RT)
 R = 30,000 m
 T = 9.434 m
 L = 18.280 m
 E = 1.448 m

PROP. CURVE CL2-28
 PI STA = 22+819.813
 N = 41,489.677
 E = 7,807.188
 $\Delta = 76^\circ 27' 01''$ (RT)
 R = 35,000 m
 T = 27.567 m
 L = 46.701 m
 E = 9.553 m

PROP. CURVE CL2-29
 PI STA = 22+888.490
 N = 41,435.840
 E = 7,751.984
 $\Delta = 7^\circ 50' 21''$ (RT)
 R = 30,000 m
 T = 2.055 m
 L = 4.105 m
 E = 0.070 m

PROP. CURVE CL2-30
 PI STA = 22+911.877
 N = 41,421.944
 E = 7,733.165
 $\Delta = 29^\circ 10' 24''$ (LT)
 R = 30,000 m
 T = 7.807 m
 L = 15.275 m
 E = 0.999 m

PROP. CURVE CL2-31
 PI STA = 22+928.705
 N = 41,406.308
 E = 7,726.078
 $\Delta = 20^\circ 11' 02''$ (RT)
 R = 30,000 m
 T = 5.339 m
 L = 10.568 m
 E = 0.471 m

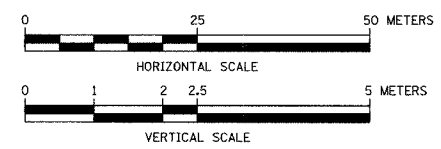
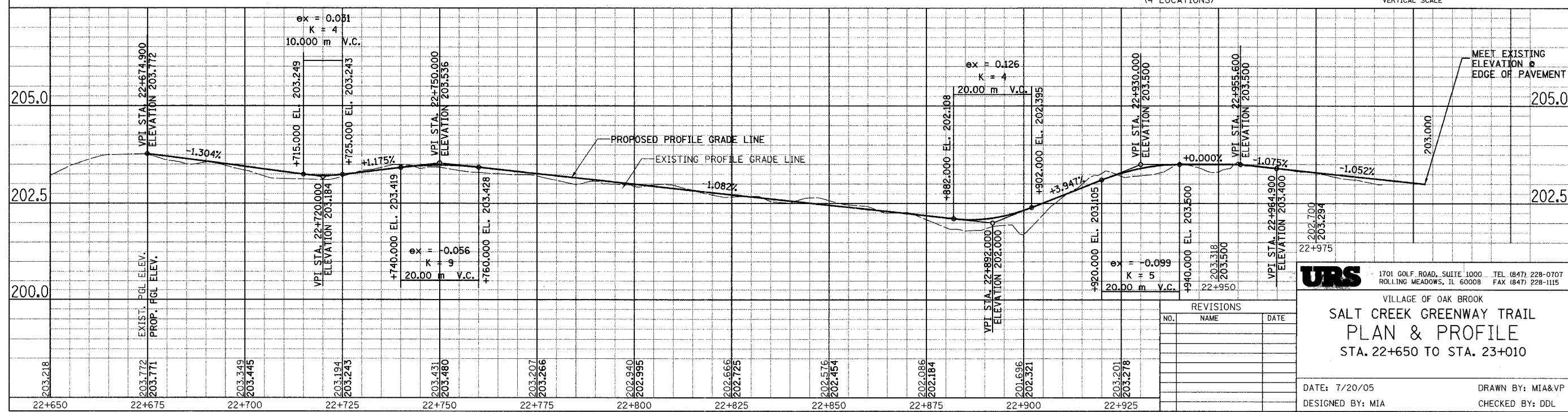
PROP. CURVE CL2-32
 PI STA = 22+949.369
 N = 41,391.507
 E = 7,711.499
 $\Delta = 90^\circ 26' 02''$ (LT)
 R = 5,000 m
 T = 5.038 m
 L = 7.892 m
 E = 2.098 m



SIGN PANELS, TYPE 1 WITH ALUMINUM SIGN POST, SPECIAL (SEE DETAIL)

EXISTING BIKE PATH REMOVAL PAID FOR AS PAVEMENT REMOVAL

FOR LEGEND SEE SHEET NO. 15



URS 1701 GOLF ROAD, SUITE 1000 TEL (847) 228-0707 ROLLING MEADOWS, IL 60008 FAX (847) 228-1115

VILLAGE OF OAK BROOK
**SALT CREEK GREENWAY TRAIL
 PLAN & PROFILE
 STA. 22+650 TO STA. 23+010**

REVISIONS		
NO.	NAME	DATE

DATE: 7/20/05
 DESIGNED BY: MIA
 DRAWN BY: MIA&VP
 CHECKED BY: DDL