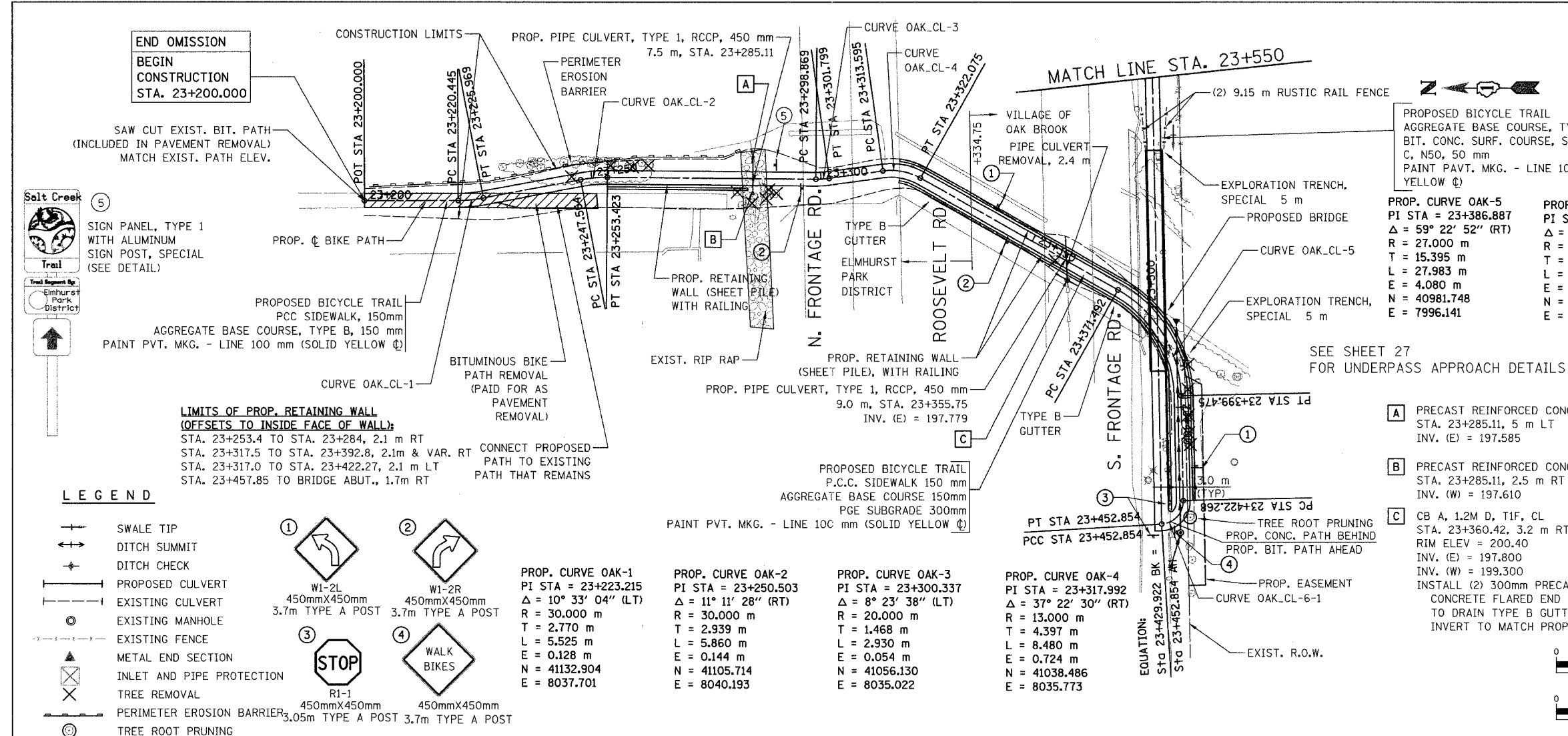


SECTION	COUNTY	TOTAL SHEETS	SHEET NO.
02-00034-00-BT	DUPAGE	108	21
STA.	TO STA.		
IDOT PROJECT NO. M-8003(216)			
SALT CREEK GREENWAY TRAIL			
CONTRACT NO. 83714			



END OMISSION  
BEGIN CONSTRUCTION  
STA. 23+200.000

SAW CUT EXIST. BIT. PATH  
(INCLUDED IN PAVEMENT REMOVAL)  
MATCH EXIST. PATH ELEV.



SIGN PANEL, TYPE 1  
WITH ALUMINUM SIGN POST, SPECIAL  
(SEE DETAIL)

PROPOSED BICYCLE TRAIL  
PCC SIDEWALK, 150mm  
AGGREGATE BASE COURSE, TYPE B, 150 mm  
PAINT PVT. MKG. - LINE 100 mm (SOLID YELLOW ☉)

LIMITS OF PROP. RETAINING WALL  
(OFFSETS TO INSIDE FACE OF WALL)  
STA. 23+253.4 TO STA. 23+284, 2.1 m RT  
STA. 23+317.5 TO STA. 23+392.8, 2.1m & VAR. RT  
STA. 23+317.0 TO STA. 23+422.27, 2.1 m LT  
STA. 23+457.85 TO BRIDGE ABUT., 1.7m RT

LEGEND

- SWALE TIP
- DITCH SUMMIT
- DITCH CHECK
- PROPOSED CULVERT
- EXISTING CULVERT
- EXISTING MANHOLE
- EXISTING FENCE
- METAL END SECTION
- INLET AND PIPE PROTECTION
- TREE REMOVAL
- PERIMETER EROSION BARRIER
- TREE ROOT PRUNING

- PROP. CURVE OAK-1  
PI STA = 23+223.215  
Δ = 10° 33' 04" (LT)  
R = 30.000 m  
T = 2.770 m  
L = 5.525 m  
E = 0.128 m  
N = 41132.904  
E = 8037.701
- PROP. CURVE OAK-2  
PI STA = 23+250.503  
Δ = 11° 11' 28" (RT)  
R = 30.000 m  
T = 2.939 m  
L = 5.860 m  
E = 0.144 m  
N = 41056.714  
E = 8040.193
- PROP. CURVE OAK-3  
PI STA = 23+300.337  
Δ = 8° 23' 38" (LT)  
R = 20.000 m  
T = 1.468 m  
L = 2.930 m  
E = 0.054 m  
N = 41038.486  
E = 8035.773
- PROP. CURVE OAK-4  
PI STA = 23+317.992  
Δ = 37° 22' 30" (RT)  
R = 13.000 m  
T = 4.397 m  
L = 8.480 m  
E = 0.724 m  
N = 41038.486  
E = 8035.773

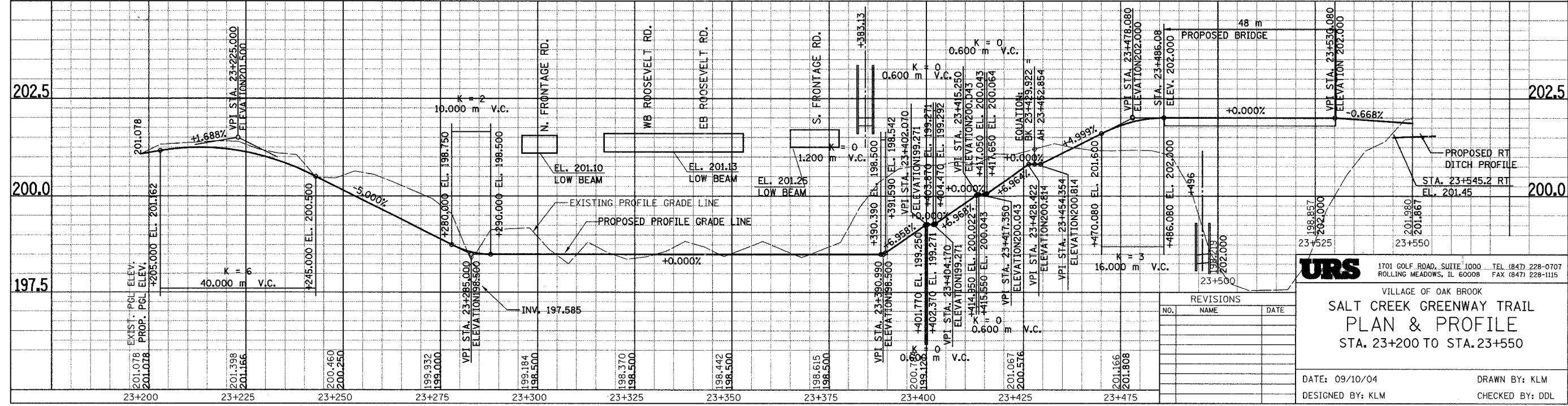
PROPOSED BICYCLE TRAIL  
AGGREGATE BASE COURSE, TYPE B, 150 mm  
BIT. CONC. SURF. COURSE, SUPERPAVE, MIX  
C, N50, 50 mm  
PAINT PAVT. MKG. - LINE 100 mm (SOLID  
YELLOW ☉)

- PROP. CURVE OAK-5  
PI STA = 23+386.887  
Δ = 59° 22' 52" (RT)  
R = 27.000 m  
T = 15.395 m  
L = 27.983 m  
E = 4.080 m  
N = 40981.748  
E = 7996.141
- PROP. CURVE OAK-6-1  
PI STA = 23+427.072  
Δ = 87° 42' 19" (RT)  
R = 5.000 m  
T = 4.804 m  
L = 7.654 m  
E = 1.934 m  
N = 40984.984  
E = 7953.271
- PROP. CURVE OAK-6-2  
PI STA = 23+452.854  
Δ = 0° 00' 08" (RT)  
N = 40989.785  
E = 7953.441

SEE SHEET 27  
FOR UNDERPASS APPROACH DETAILS

- A PRECAST REINFORCED CONCRETE FES, 450 mm  
STA. 23+285.11, 5 m LT  
INV. (E) = 197.585
- B PRECAST REINFORCED CONCRETE FES, 450 mm  
STA. 23+285.11, 2.5 m RT  
INV. (W) = 197.610
- C CB A, 1.2M D, T1F, CL  
STA. 23+360.42, 3.2 m RT  
RIM ELEV = 200.40  
INV. (E) = 197.800  
INV. (W) = 199.300

USE CAUTION AROUND  
24" GAS LINE  
CONTACT NICOR  
PRIOR TO EXCAVATION



REVISIONS		
NO.	NAME	DATE

**URS**  
1701 GOLF ROAD, SUITE 1000 TEL (847) 228-0707  
ROLLING MEADOWS, IL 60008 FAX (847) 228-1115

VILLAGE OF OAK BROOK  
**SALT CREEK GREENWAY TRAIL  
PLAN & PROFILE**  
STA. 23+200 TO STA. 23+550

DATE: 09/10/04      DRAWN BY: KLM  
DESIGNED BY: KLM      CHECKED BY: DDL