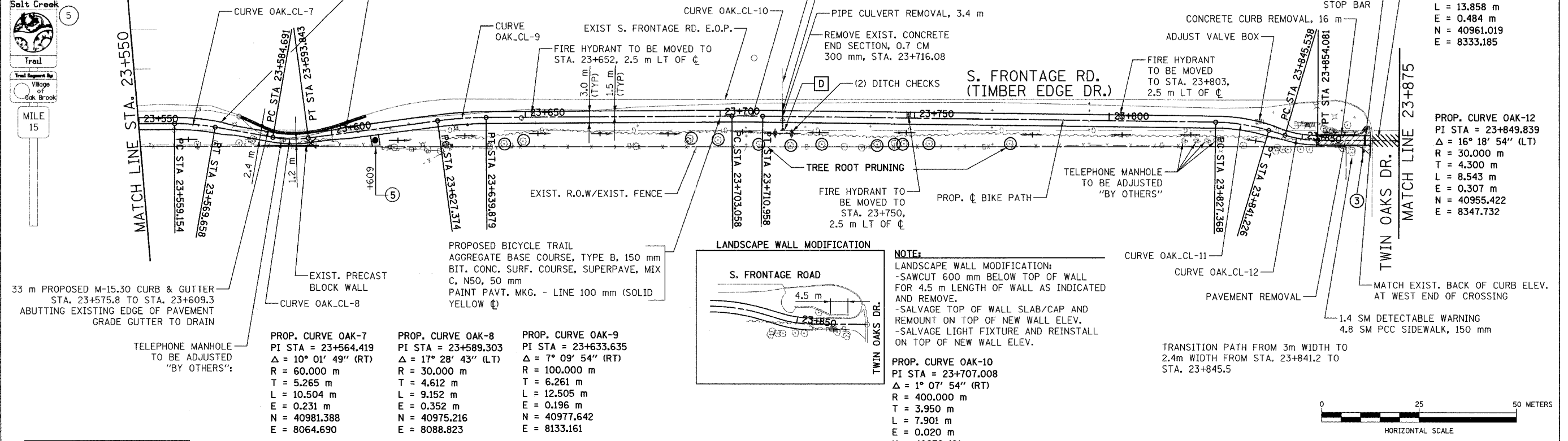


**D** PRECAST REINFORCED CONCRETE FES, 300 mm  
 STA. 23+716.080, 2.7 m RT  
 INV. = 200.370

SECTION	COUNTY	TOTAL SHEETS	SHEET NO.
02-00034-00-BT	DUPAGE	108	22
STA. TO STA.			
IDOT PROJECT NO. M-8003(216)			
SALT CREEK GREENWAY TRAIL			

CONTRACT NO. 83714

(2) SIGN PANELS, TYPE 1 WITH ALUMINUM SIGN POST, SPECIAL (SEE DETAIL)

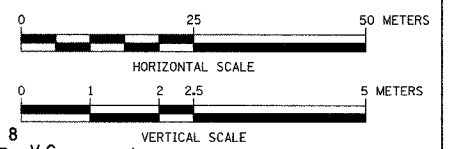
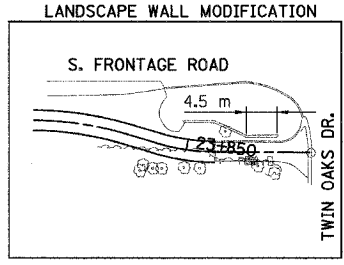


PROP. CURVE OAK-11  
 PI STA = 23+834.342  
 $\Delta = 15^\circ 52' 47''$  (RT)  
 R = 50,000 m  
 T = 6,974 m  
 L = 13,858 m  
 E = 0.484 m  
 N = 40961.019  
 E = 8333.185

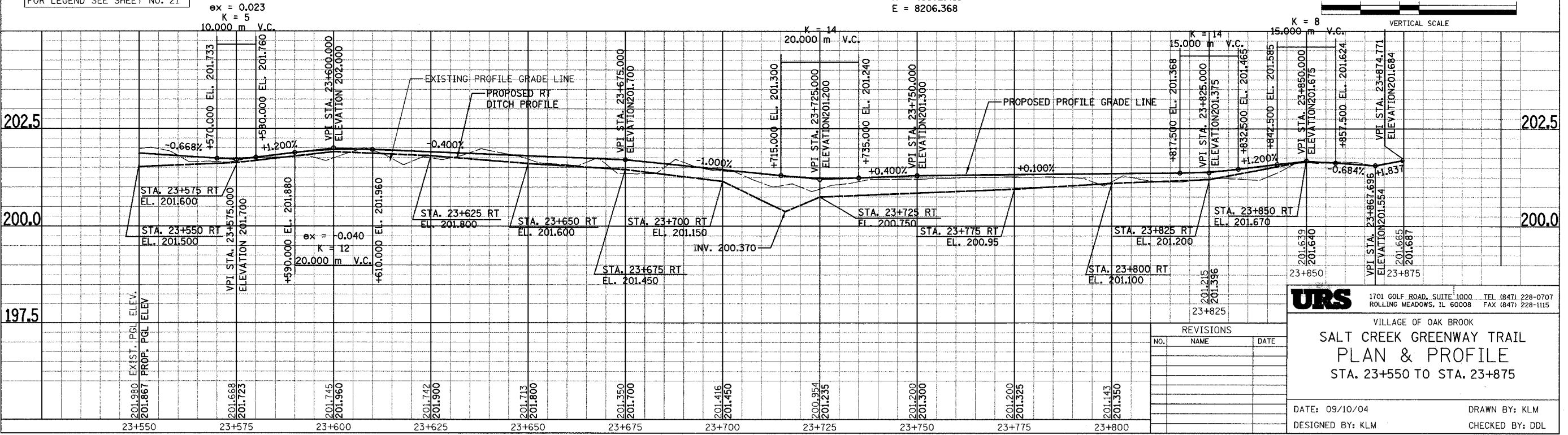
PROP. CURVE OAK-12  
 PI STA = 23+849.839  
 $\Delta = 16^\circ 18' 54''$  (LT)  
 R = 30,000 m  
 T = 4,300 m  
 L = 8,543 m  
 E = 0.307 m  
 N = 40955.422  
 E = 8347.732

**NOTE:**  
 LANDSCAPE WALL MODIFICATION:  
 -SAWCUT 600 mm BELOW TOP OF WALL FOR 4.5 m LENGTH OF WALL AS INDICATED AND REMOVE.  
 -SALVAGE TOP OF WALL SLAB/CAP AND REMOUNT ON TOP OF NEW WALL ELEV.  
 -SALVAGE LIGHT FIXTURE AND REINSTALL ON TOP OF NEW WALL ELEV.

PROP. CURVE OAK-10  
 PI STA = 23+707.008  
 $\Delta = 1^\circ 07' 54''$  (RT)  
 R = 400,000 m  
 T = 3,950 m  
 L = 7,901 m  
 E = 0.020 m  
 N = 40972.481  
 E = 8206.368



FOR LEGEND SEE SHEET NO. 21



**URS** 1701 GOLF ROAD, SUITE 1000 TEL (847) 228-0707  
 ROLLING MEADOWS, IL 60008 FAX (847) 228-1115

VILLAGE OF OAK BROOK  
**SALT CREEK GREENWAY TRAIL  
 PLAN & PROFILE  
 STA. 23+550 TO STA. 23+875**

REVISIONS		
NO.	NAME	DATE

DATE: 09/10/04 DRAWN BY: KLM  
 DESIGNED BY: KLM CHECKED BY: DDL