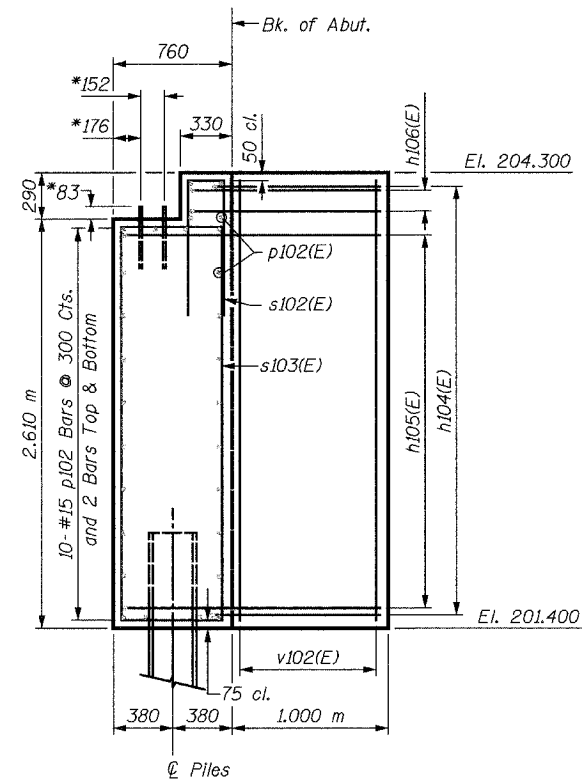


ELEVATION

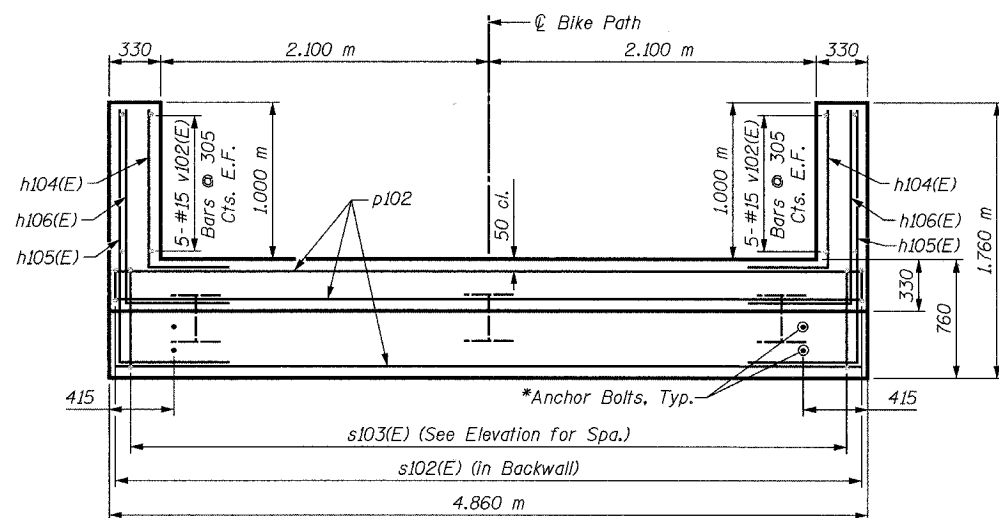


SIDE VIEW

PILE DATA:

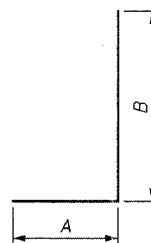
Type: HP310x79
Capacity: Driven to Refusal
Est. Length: 10 m
No. Required: 3

*Anchor bolt size and locations shall be checked against the Bridge Fabricator's requirements prior to setting them.

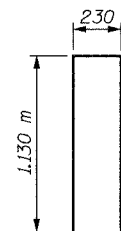


PLAN

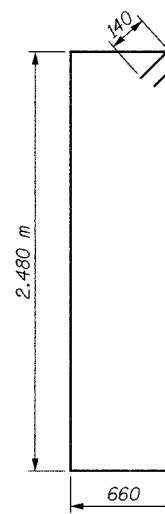
Bar	A	B
h104(E)	0.900 m	1.000 m
h105(E)	0.900 m	1.660 m
h106(E)	0.900 m	1.230 m



BAR h104(E) TO h106(E)



BAR s102(E)



BAR s103(E)

BILL OF MATERIAL

Bar	No.	Size	Length	Shape
h104(E)	24	#15	1.90 m	□
h105(E)	20	#15	2.56 m	□
h106(E)	4	#15	2.13 m	□
p102(E)	28	#15	4.76 m	—
s102(E)	18	#15	2.49 m	□
s103(E)	18	#15	6.56 m	□
v102(E)	20	#15	2.80 m	—
Concrete Structures			Cu. M	12.0
Reinforcement Bars, Epoxy Coated			kg	690
Furnishing Steel Piles HP310x79			Meter	30
Driving Steel Piles			Meter	30
Metal Shoes			Each	3
Structure Excavation			Cu. M	7

LEGEND

E.F. = Each Face

MIN. BAR LAP

#15 = 890

NOTES:

Space reinforcement in cap to miss anchor bolts.

All edges shall have standard 20 mm chamfers except as noted.

For Anchor Bolt Details, see Sheet S32.

There shall be no splicing of longitudinal bars. Bars shall be ordered full length.

Bars designated (E) shall be epoxy coated.

SHEET S4 of S33

REVISIONS		NAME	DATE	URS 1701 GOLF ROAD, SUITE 1000 ROLLING MEADOWS, IL 60008 TEL (847) 228-0707 FAX (847) 228-1115
NAME	DATE			
				VILLAGE OF OAKBROOK SALT CREEK GREENWAY TRAIL PEDESTRIAN BRIDGE, STA. 18+151.5 NORTH ABUTMENT DETAILS
				DATE: 06/30/05 DESIGNED BY: MDS DRAWN BY: MDS CHECKED BY: GAT