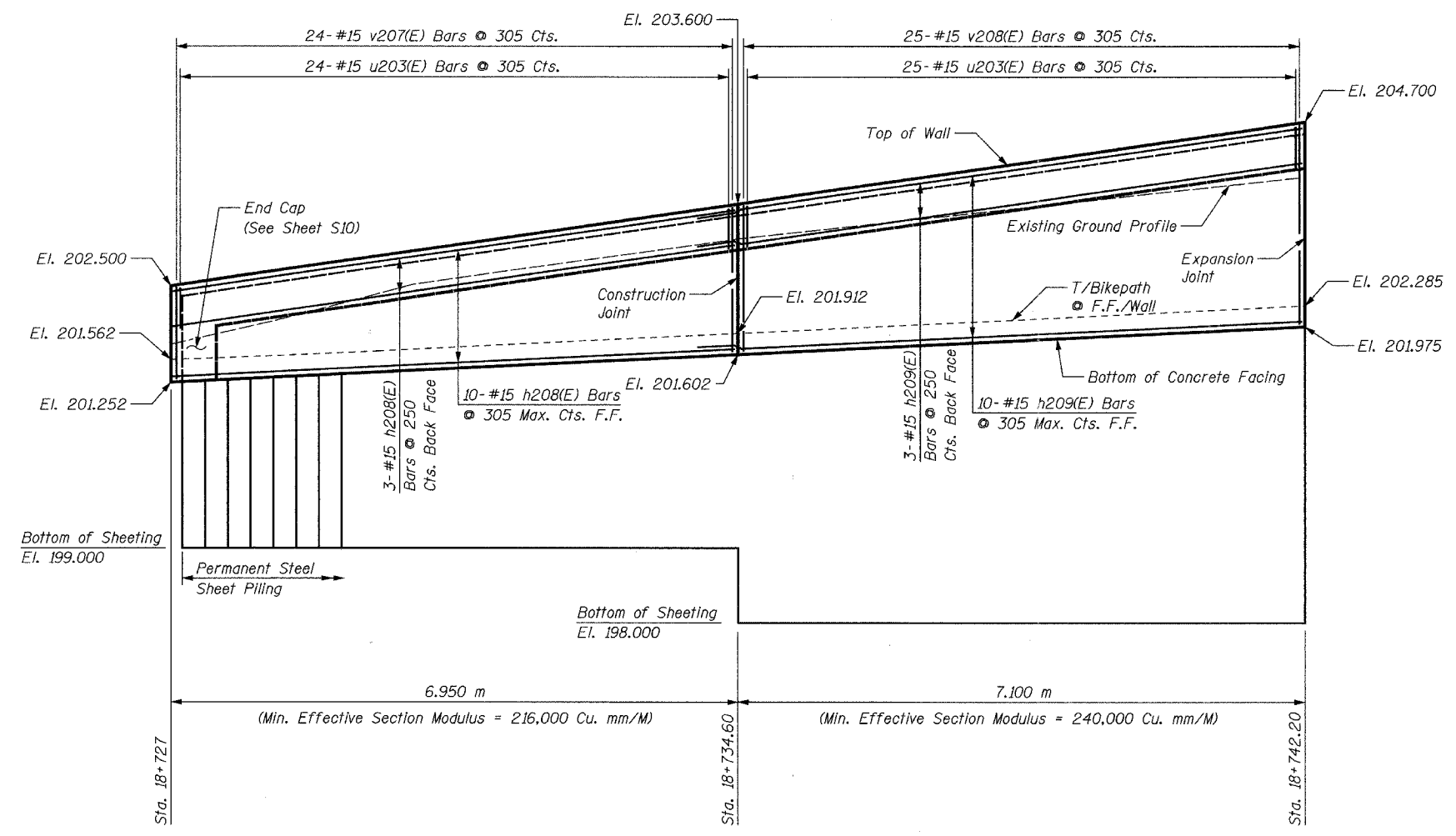
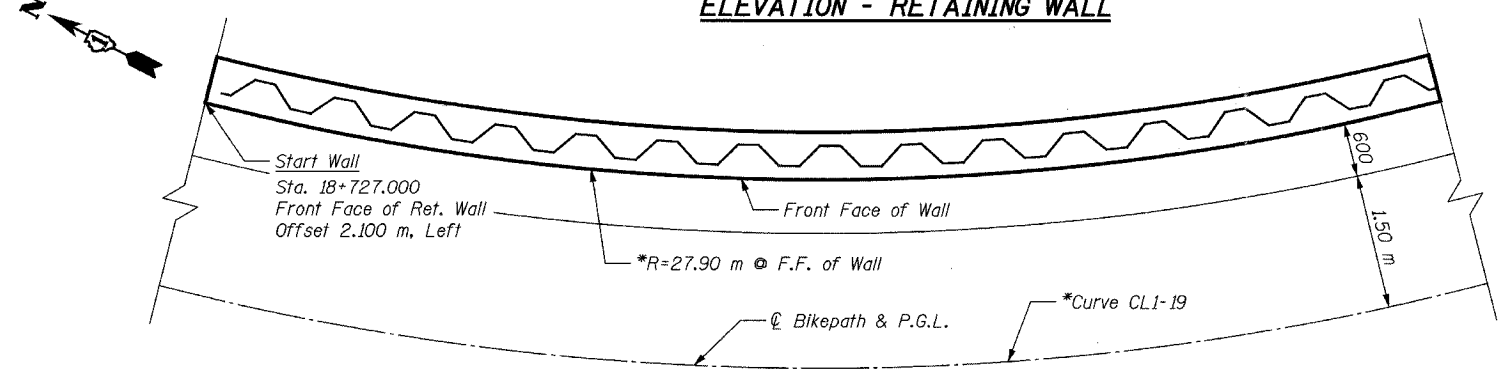


**BILL OF MATERIAL**

Bar	No.	Size	Length	Shape
h208(E)	13	#15	6.85 m	
h209(E)	13	#15	7.74 m	
u203(E)	59	#15	1.45 m	
v207(E)	24	#15	1.89 m	
v208(E)	25	#15	2.62 m	
Concrete Structures			Cu. M	9.6
Reinforcement Bars, Epoxy Coated			kg	610
Structure Excavation			Cu. M	7.9
Permanent Steel				
Sheet Piling			Sq. M	70
Pipe Handrail			Meter	14



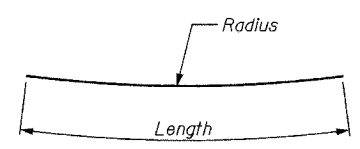
**ELEVATION - RETAINING WALL**



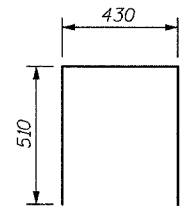
**PLAN - RETAINING WALL**

**\*NOTE:**  
For horizontal curve and alignment information, see Plan & Profile drawings.

Bar	Radius	Length
h208(E)	27.90 m	6.85 m
h209(E)	27.90 m	7.74 m



**h208(E) & h209(E)**



**u203(E)**

**NOTES:**  
For Notes see Sheet S7.

REVISIONS		NAME	DATE	1701 GOLF ROAD, SUITE 1000 ROLLING MEADOWS, IL 60008 TEL (847) 228-0707 FAX (847) 228-1115
NO.	DESCRIPTION			
				VILLAGE OF OAKBROOK <b>SALT CREEK GREENWAY TRAIL</b> RET. WALL STA. 18+727 TO 18+742.2 PLAN & ELEVATION
DATE: 06/30/05		DRAWN BY: MDS		DESIGNED BY: MDS CHECKED BY: GAT