

**BILL OF MATERIAL**

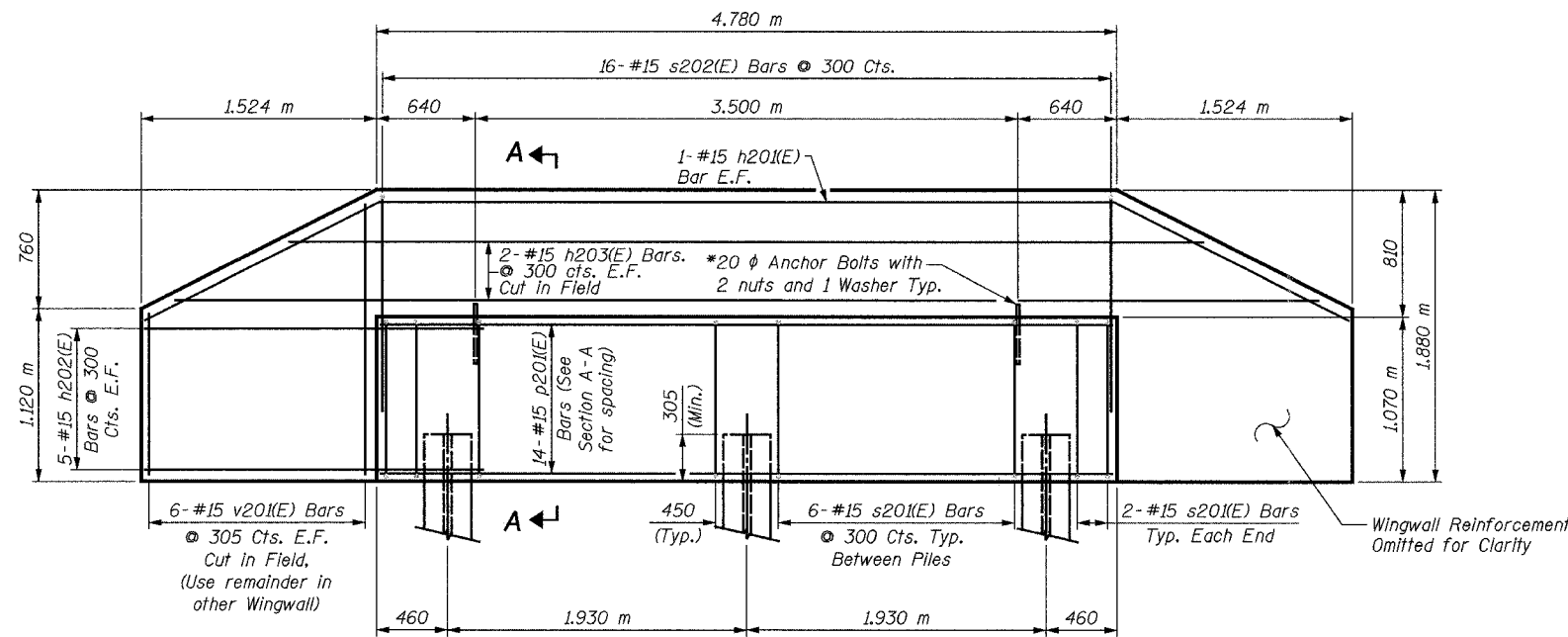
Bar	No.	Size	Length	Shape
h201(E)	2	#15	8.08 m	
h202(E)	20	#15	2.42 m	
h203(E)	4	#15	7.40 m	
p201(E)	14	#15	4.68 m	
s201(E)	16	#15	3.48 m	
s202(E)	16	#15	3.53 m	
v201(E)	12	#15	2.75 m	
Concrete Structures			Cu. M	6.7
Reinforcement Bars, Epoxy Coated			kg	480
Furnishing Steel Pile HP310x79			Meter	22
Driving Steel Piles			Meter	22
Test Pile Steel HP310x79			Each	1
Metal Shoes			Each	2
Structure Excavation			Cu. M	20

**LEGEND**

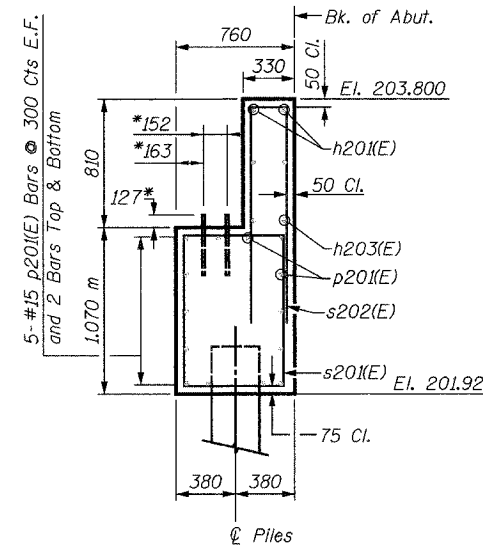
E.F. = Each Face

**MIN. BAR LAP**

#15 = 890

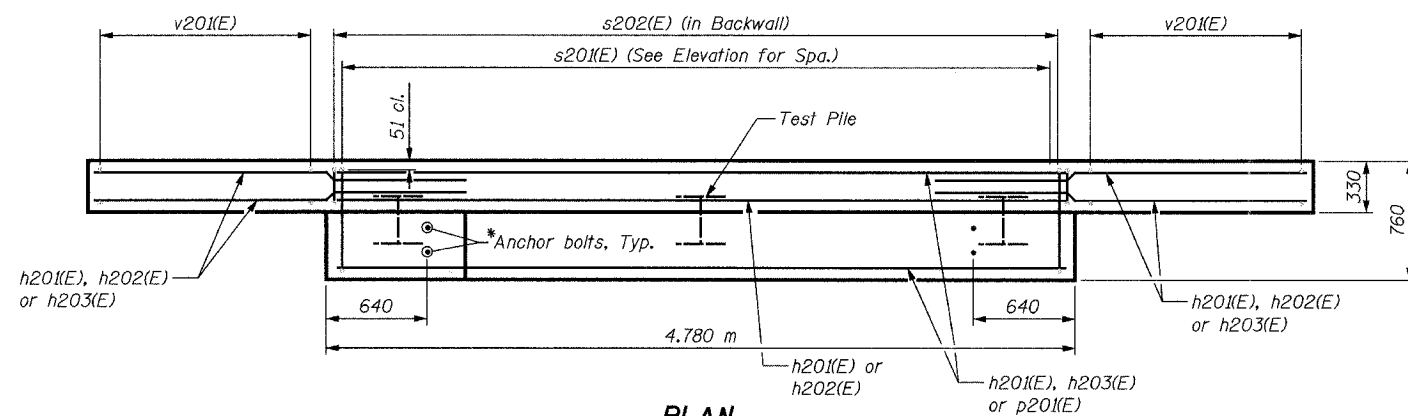


**ELEVATION**

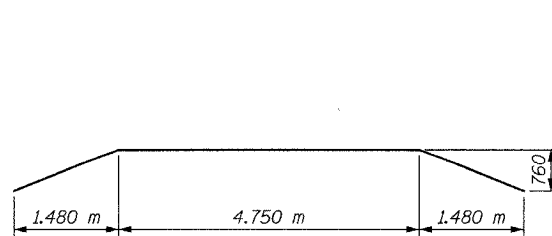


**SECTION A-A**

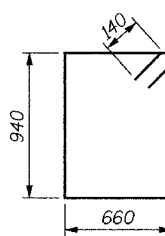
\* Anchor bolt size and locations shall be checked against the bridge fabricator's requirements prior to setting them.



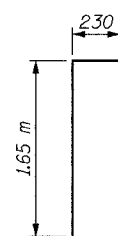
**PLAN**



**BAR h201(E)**



**BAR s201(E)**



**BAR s202(E)**

**PILE DATA:**

Type: HP310x79  
Capacity: Driven to Refusal  
Est. Length: 11 m  
No. Required: 2 + 1 Test Pile

Test Pile shall be a permanent pile driven at the North Abutment)

**NOTES:**

- Space reinforcement in cap to miss anchor bolts.
- All edges shall have standard 20 mm chamfers except as noted.
- For Anchor Bolt Details, see Sheet S32.
- There shall be no splicing of longitudinal bars. Bars shall be ordered full length.
- Bars designated (E) shall be epoxy coated.

SHEET S12 of S33

REVISIONS		NAME	DATE	1701 GOLF ROAD, SUITE 1000 ROLLING MEADOWS, IL 60008 TEL (847) 228-0707 FAX (847) 228-1115
NO.	DESCRIPTION			
				VILLAGE OF OAKBROOK SALT CREEK GREENWAY TRAIL PEDESTRIAN BRIDGE, STA. 18+802.5 NORTH ABUTMENT DETAILS
DATE: 06/30/05		DESIGNED BY: MDS		DRAWN BY: MDS CHECKED BY: GAT